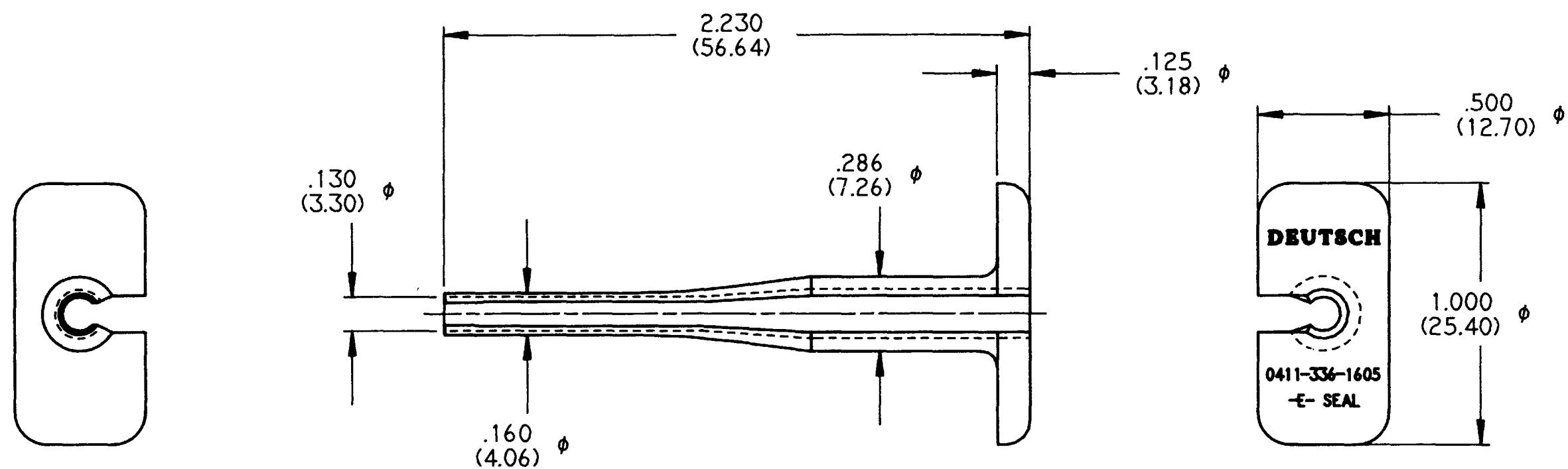


REV
NC 0411-336-1605

| REVISIONS | | | |
|-----------|-----------------------------|--------|---------------|
| SYM | DESCRIPTION | DATE | APPROVED |
| NC | NEW RELEASE PER E.O. A14617 | 7-1-94 | <i>R. Rad</i> |
| | | | |
| | | | |



- NOTES:
1. ALL DIMENSIONS ARE IN INCHES (METRIC).
 2. ALL DIMENSIONS ARE FOR REFERENCE ONLY.
 3. MATERIAL: PLASTIC, MEDIUM BLUE.

| SIGNATURE & DATE | |
|------------------|-----------------------|
| DR | C. WOODRUFF 16 JUN 94 |
| CHK | |
| PE | <i>[Signature]</i> |
| APPD | <i>R. Rad 7-1-94</i> |
| SCALE | NONE WT |

PROBE TOOL
EXTRACTION
SIZE 16
REDUCED 'E' SEAL

ENVELOPE

| CP | MATL CODE |
|--|--------------|
| The Deutsch Company DEUTSCH I.P.D. 37140 INDUSTRIAL AVE. HEMET, CALIF. 92343 | |
| B 0411-336-1605 | |
| DWG SIZE | SHEET 1 OF 1 |