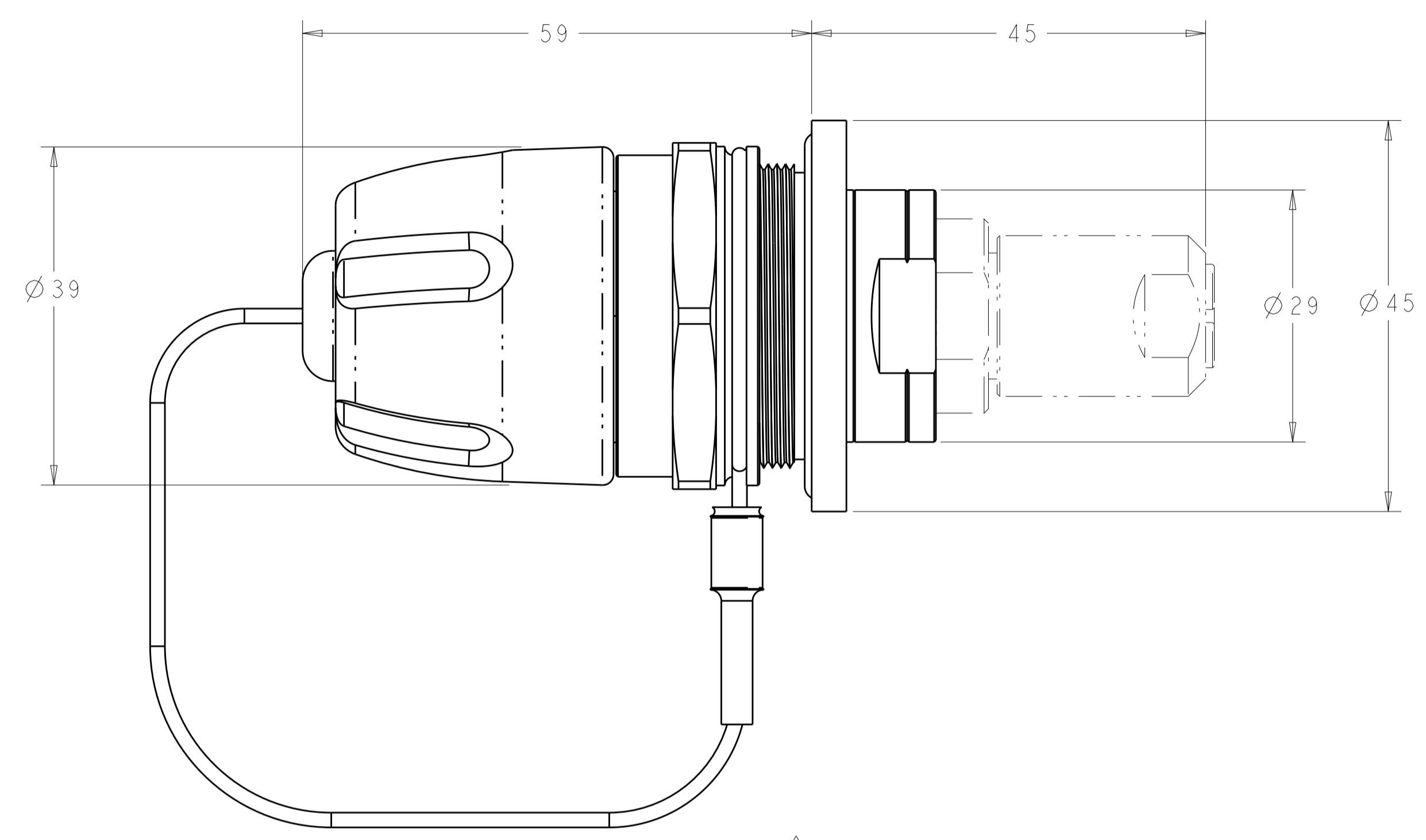


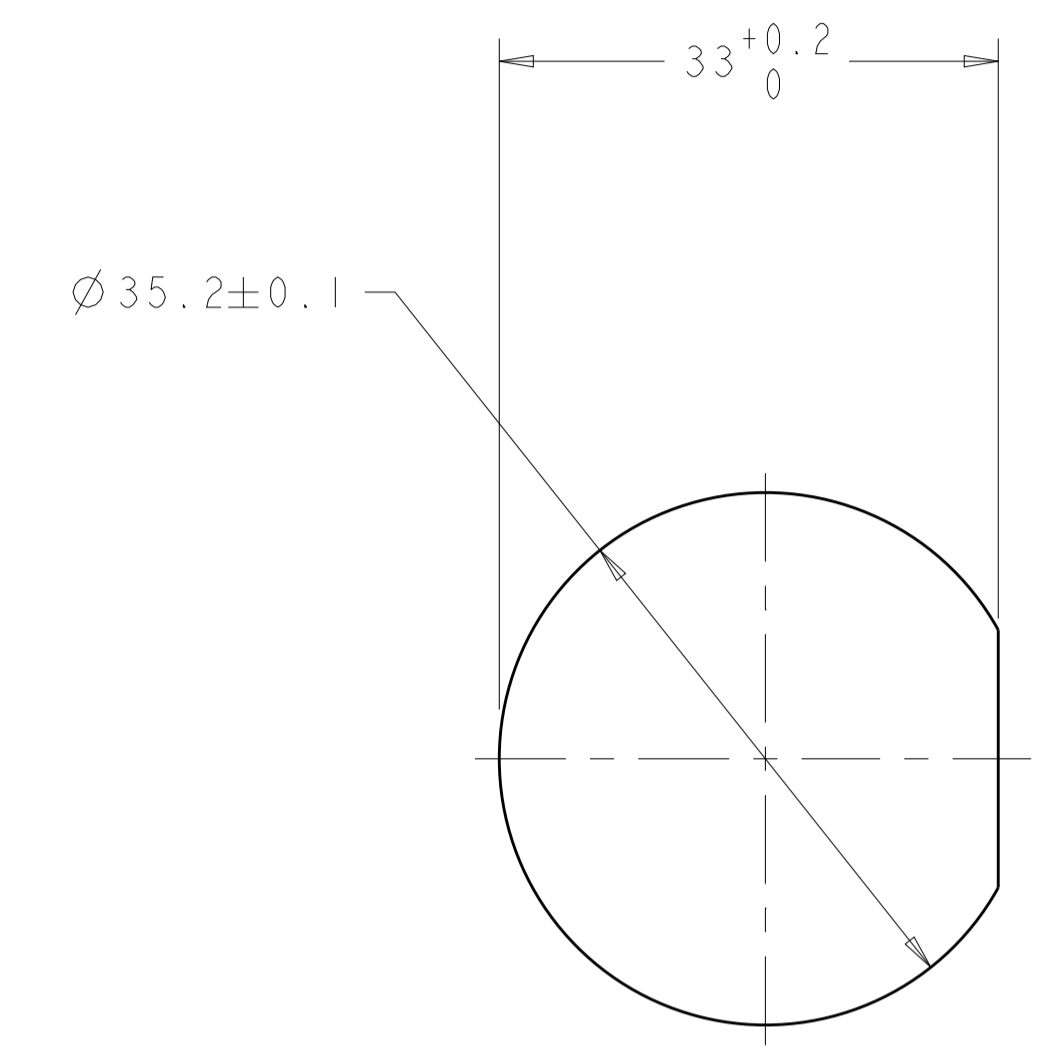
| REVISIONS | | | | |
|-----------|-----|---------------|-----------|-------|
| P. | LTN | DESCRIPTION | DATE | APVD |
| | D2 | ECR-15-009282 | 29JUL2015 | KG DW |
| | | | | |
| | | | | |

- ASSEMBLY SHOWN FOR REFERENCE ONLY. SHIPPED LOOSE PIECE AS SHOWN ON PAGE 2.
- ALL ASSEMBLY DIMENSIONS ARE FOR REFERENCE ONLY.
- PANEL THICKNESS SHOULD BE BETWEEN 1mm AND 6.5mm.
- THIS PRODUCT HAS NOT COMPLETED VALIDATION TESTING.
- COMPLETE THE CONNECTOR ASSEMBLY BY ADDING EACH OF THE FOLLOWING PRO BEAM SR. KITS:
 - EXPANDED BEAM INSERT ASSEMBLY KIT;
 - CABLE ADAPTER KIT, SIZED TO THE CABLE JACKET DIAMETER;
 - FERRULE KIT, ONE PER FIBER.

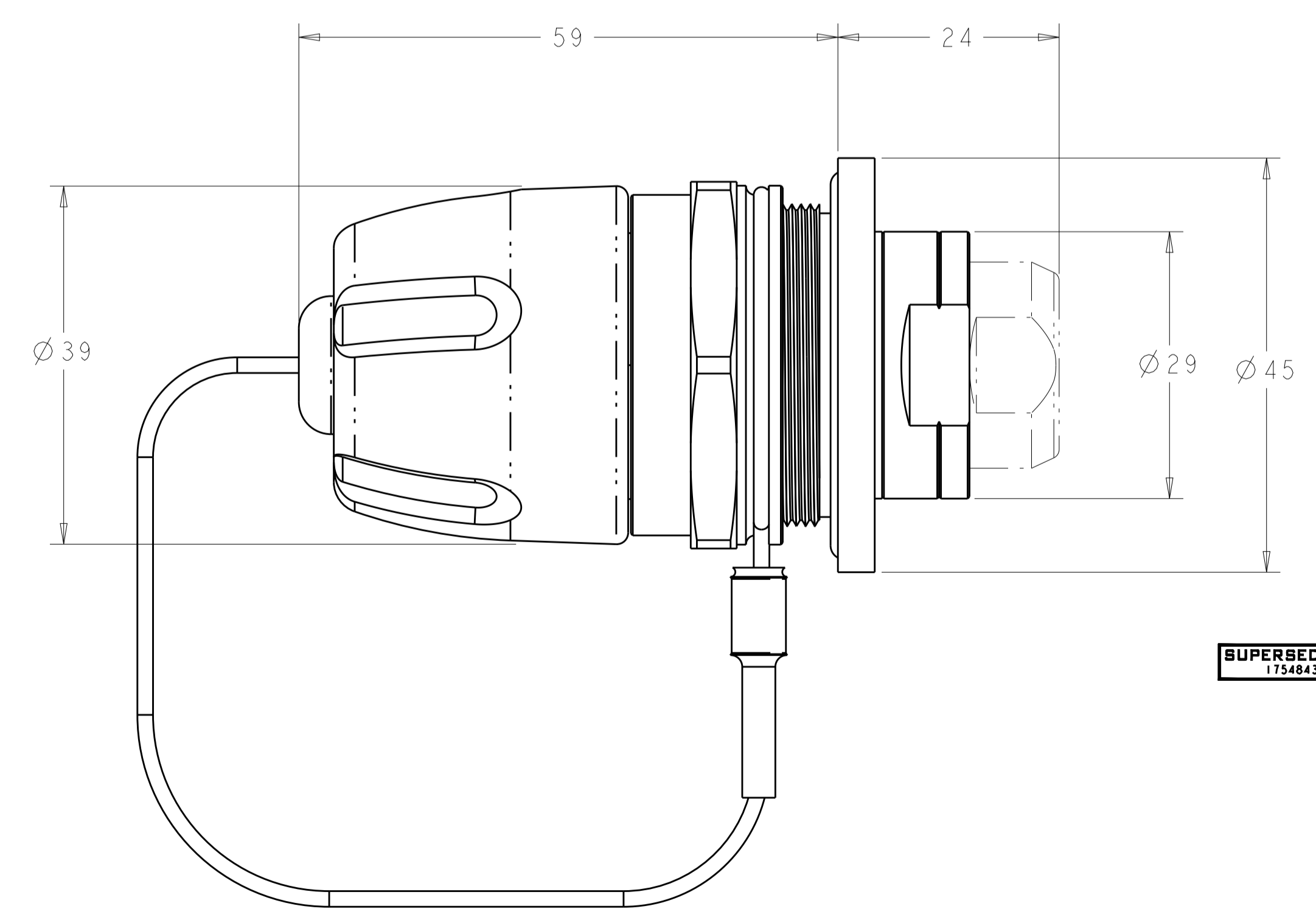
VIEWS SHOWN WITH CABLE ADAPTER VARIATIONS IN PHANTOM LINES FOR VISUAL AND DIMENSIONAL REFERENCE ONLY. CABLE ADAPTER KITS ARE ORDERED SEPERATELY.



SHOWN WITH STANDARD ADAPTER FOR MIL-TACTICAL CABLE



RECOMMENDED PANEL CUT-OUT



SHOWN WITH LOW-PROFILE ADAPTER FOR BUFFERED FIBER

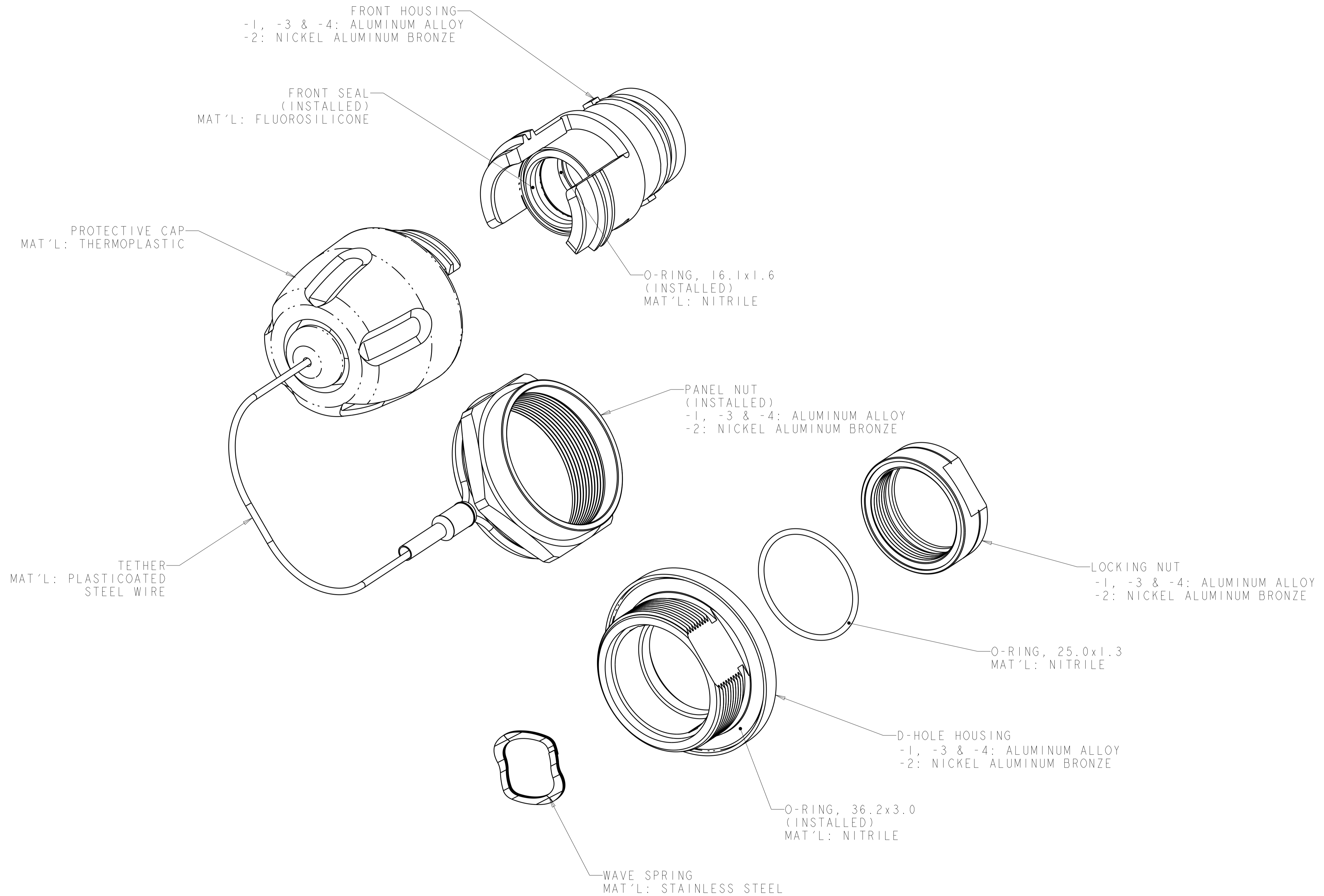
SUPERSEDED BY:
1754843-4

| | | |
|------------------------|------------------------|-------------|
| CONDUCTIVE BLACK Zn-Ni | ALUMINUM | 1754843-4 |
| CONDUCTIVE OLIVE DRAB | ALUMINUM | 1754843-3 |
| N/A | NICKEL ALUMINUM BRONZE | 1754843-2 |
| HARD ANODIZE | ALUMINUM | 1754843-1 |
| PLATING | HOUSING ALLOY | PART NUMBER |

| | | | |
|--|--|---------------------------------|--|
| THIS DRAWING IS A CONTROLLED DOCUMENT. | | DWN K. GLATFELT 23JUL2004 | TE Connectivity |
| DIMENSIONS: | | CHK D. WERTMAN 12AUG2004 | |
| mm | TOLERANCES UNLESS OTHERWISE SPECIFIED: | APVD D. WERTMAN 13AUG2004 | NAME CONNECTOR SHELL KIT, D-HOLE BULKHEAD, PRO BEAM SR. |
| 0 PLC | ± | PRODUCT SPEC | SIZE |
| 1 PLC | ± | APPLICATION SPEC | CAGE CODE |
| 2 PLC | ± | WEIGHT | DRAWING NO |
| 3 PLC | ± | Customer Drawing | RESTRICTED TO |
| 4 PLC | ± | SCALE 2:1 | SHEET 1 OF 2 |
| ANGLES | ± | REV D2 | |
| MATERIAL | SEE TABLE | | |

| REVISIONS | | | | |
|-----------|-----|-------------|------|------|
| P. | LTN | DESCRIPTION | DATE | APVD |
| - | - | SEE SHEET 1 | - | - |
| | | | | |
| | | | | |

1. SHIPPED LOOSE PIECE AS SHOWN.



| | | | | | | | | | | | | | | | |
|--|---|-----------------------------------|---|-------|---|-------|---|-------|---|-------|---|--------|---|-----------------------------------|---|
| THIS DRAWING IS A CONTROLLED DOCUMENT. | | DWN A. GLATFELT 13 JUL 2004 | TE Connectivity | | | | | | | | | | | | |
| DIMENSIONS: mm | | CHK D. WERTMAN 12 AUG 2004 | | | | | | | | | | | | | |
| <table border="1"> <tr> <td>0 PLC</td> <td>±</td> </tr> <tr> <td>1 PLC</td> <td>±</td> </tr> <tr> <td>2 PLC</td> <td>±</td> </tr> <tr> <td>3 PLC</td> <td>±</td> </tr> <tr> <td>4 PLC</td> <td>±</td> </tr> <tr> <td>ANGLES</td> <td>±</td> </tr> </table> | | 0 PLC | ± | 1 PLC | ± | 2 PLC | ± | 3 PLC | ± | 4 PLC | ± | ANGLES | ± | APVD D. WERTMAN 13 AUG 2004 | NAME CONNECTOR SHELL KIT, D-HOLE BULKHEAD, PRO BEAM SR. |
| 0 PLC | ± | | | | | | | | | | | | | | |
| 1 PLC | ± | | | | | | | | | | | | | | |
| 2 PLC | ± | | | | | | | | | | | | | | |
| 3 PLC | ± | | | | | | | | | | | | | | |
| 4 PLC | ± | | | | | | | | | | | | | | |
| ANGLES | ± | | | | | | | | | | | | | | |
| MATERIAL SEE TABLE | | FINISH SEE TABLE | SIZE CAGE CODE DRAWING NO A100779C=1754843 | | | | | | | | | | | | |
| Customer Drawing | | WEIGHT | RESTRICTED TO | | | | | | | | | | | | |
| SCALE 1:1 | | SHEET 2 OF 2 | REV D2 | | | | | | | | | | | | |