

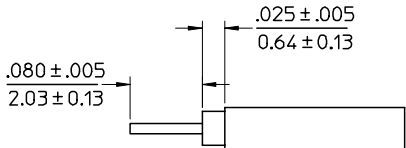
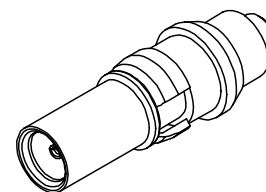
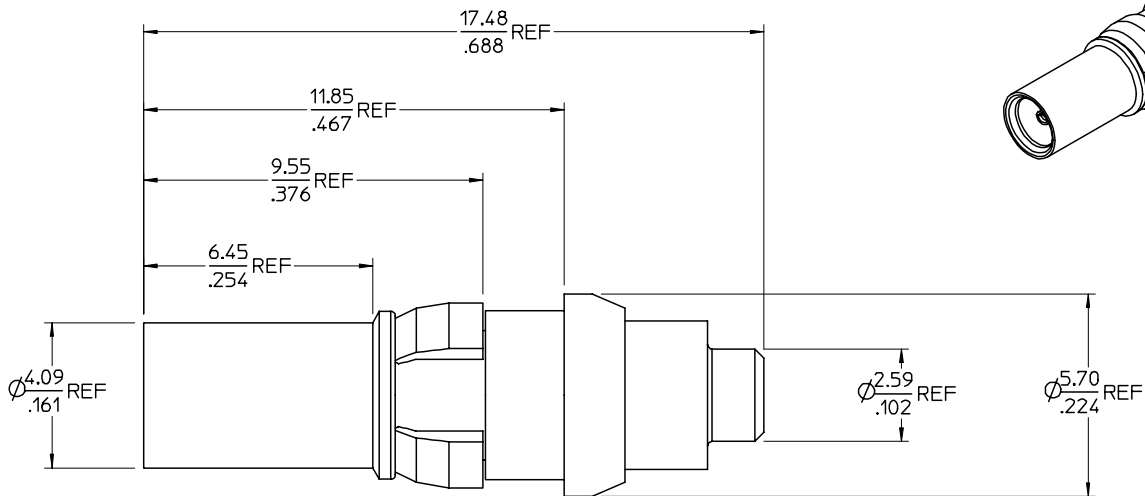
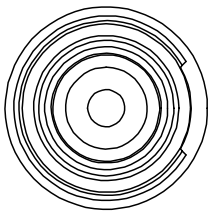
MATERIALS AND FINISHES

BODY: BRASS
PLATED: GOLD (10 MICROINCHES MIN)

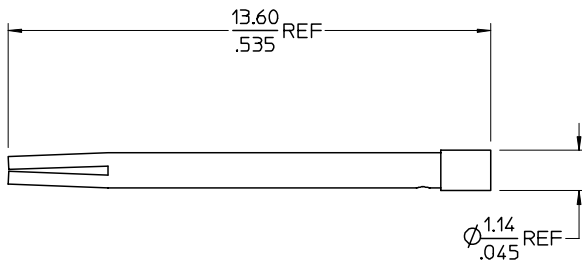
CONTACT: BeCu
PLATED: GOLD (10 MICROINCHES MIN)

RETAINING RING: BeCu
PLATED: NICKEL (100 MICROINCHES MIN)

INSULATOR: TEFLON



RECOMMENDED STRIP DIMENSIONS



- UNLESS OTHERWISE SPECIFIED DIMS ARE INCHES AND ANGLES ARE DEGREES.
- ∇ ALL OVER.
 - NO CHATTER OR NON-UNIFORM
 - SURFACE FINISH ALLOWED.
 - PARTS TO BE FREE OF BURRS & SHARP EDGES 0.13(.005) MAX BREAK.
 - EXTERNAL THREADS TO BE ROLLED OR SINGLE POINT.
 - DIAMETERS TO BE CONCENTRIC WITHIN 0.08(.003) TIR.

PART # 73174-0330

SPECIFICATION		DESCRIPTION	
CHG: 13.60 REF WAS 13.34 REF UPDATED DEPICTION OF CONTACT. TITLE WAS DIN 41626. REMOVED DIN SPECIFICATION. BODY PLATING WAS 1 MICROINCHES MIN	EC NO. JDRF-2096 DRWN: SSS 04/15/04 CHK: TEF 04/15/04 APPR: JW 04/15/04	CHG: NEW RELEASE CHANGED ALL DIMS FROM IN/MM TO MM/IN ADDED PLATING THICKNESSES	EC NO. URF-2092 DRWN: TEF 04/05/04 CHK: SSS 04/05/04 APPR: GMH 04/05/04
EC NO. URF-2092 DRWN: TEF 04/05/04 CHK: SSS 04/05/04 APPR: GMH 04/05/04	CHG: UPDATED DEPICTION OF CONTACT. .080±.005 WAS .045±.005	DRWN: SSS 02/26/04	CHG: ADDED STRIP DIMENSIONS
DRWN: SSS 02/10/04	CHG: UPDATED DEPICTION OF BODY AND CONTACT	DRWN: SSS 01/21/02/0047/01/15	QUALITY SYMBOLS
CHG: 13.60 REF WAS 13.34 REF UPDATED DEPICTION OF CONTACT. TITLE WAS DIN 41626. REMOVED DIN SPECIFICATION. BODY PLATING WAS 1 MICROINCHES MIN	EC NO. URF-2092 DRWN: TEF 04/05/04 CHK: SSS 04/05/04 APPR: GMH 04/05/04	CHG: UPDATED DEPICTION OF CONTACT. .080±.005 WAS .045±.005	GENERAL TOLERANCES (UNLESS SPECIFIED)
CHG: NEW RELEASE CHANGED ALL DIMS FROM IN/MM TO MM/IN ADDED PLATING THICKNESSES	EC NO. URF-2092 DRWN: TEF 04/05/04 CHK: SSS 04/05/04 APPR: GMH 04/05/04	CHG: UPDATED DEPICTION OF CONTACT. .080±.005 WAS .045±.005	SCALE: INCH DESIGN UNITS: INCH THIRD ANGLE PROJECTION
CHG: ADDED STRIP DIMENSIONS	CHG: UPDATED DEPICTION OF BODY AND CONTACT	CHG: UPDATED DEPICTION OF CONTACT. .080±.005 WAS .045±.005	TITLE: DIN 41626 JACK 50 OHM SR .047 CABLE DIN-JC
CHG: UPDATED DEPICTION OF BODY AND CONTACT	CHG: UPDATED DEPICTION OF CONTACT. .080±.005 WAS .045±.005	CHG: UPDATED DEPICTION OF CONTACT. .080±.005 WAS .045±.005	CHECKED BY: TEF DATE: 2004/01/15
CHG: UPDATED DEPICTION OF CONTACT. .080±.005 WAS .045±.005	CHG: UPDATED DEPICTION OF CONTACT. .080±.005 WAS .045±.005	CHG: UPDATED DEPICTION OF CONTACT. .080±.005 WAS .045±.005	APPROVED BY: JDW DATE: 2003/12/04
CHG: UPDATED DEPICTION OF CONTACT. .080±.005 WAS .045±.005	CHG: UPDATED DEPICTION OF CONTACT. .080±.005 WAS .045±.005	CHG: UPDATED DEPICTION OF CONTACT. .080±.005 WAS .045±.005	MATERIAL NO. SD-73174-033
CHG: UPDATED DEPICTION OF CONTACT. .080±.005 WAS .045±.005	CHG: UPDATED DEPICTION OF CONTACT. .080±.005 WAS .045±.005	CHG: UPDATED DEPICTION OF CONTACT. .080±.005 WAS .045±.005	DOCUMENT NO. SD-73174-033
CHG: UPDATED DEPICTION OF CONTACT. .080±.005 WAS .045±.005	CHG: UPDATED DEPICTION OF CONTACT. .080±.005 WAS .045±.005	CHG: UPDATED DEPICTION OF CONTACT. .080±.005 WAS .045±.005	SHEET NO. 1 OF 1
CHG: UPDATED DEPICTION OF CONTACT. .080±.005 WAS .045±.005	CHG: UPDATED DEPICTION OF CONTACT. .080±.005 WAS .045±.005	CHG: UPDATED DEPICTION OF CONTACT. .080±.005 WAS .045±.005	THIS DRAWING CONTAINS INFORMATION THAT IS PROPRIETARY TO MOLEX INCORPORATED AND SHOULD NOT BE USED WITHOUT WRITTEN PERMISSION