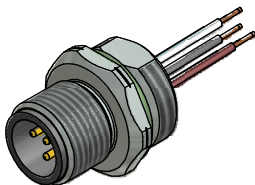


**Contact assignment:**

- 1 brown
- 2 white
- 3 blue
- 4 black
- 5 grey



**Technical specification:**

Rated voltage: 60 V  
IEC 61076-2-101

Current rating: 4 A at 40°C  
IEC 61076-2-101

Insulation resistance: >=100 MΩ  
IEC 60512

Pollution degree: 3/2  
IEC 60664-1

Degree of protection: IP 67, in mated condition  
IEC 60529

Temperature range: -30°C ... +80°C

Mating cycles: >=100  
IEC 60512-9a

**Materials:**

Contact: CuZn

Contact plating: Nickel, gold plated

Contact carrier: PBT GF, UL 94

Sealing: FPM

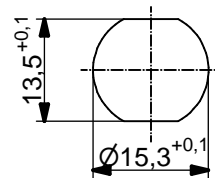
Socket housing: CuZn, nickel plated

Grouting: Polyurethane-resin, UL 94

**Installation specification:**

recommended torque: 1-1,2 Nm

Conec installation tool: Torque wrench: 36-000200  
Insert across flats 17: 36-000230



Minimum wall thickness 1,5mm, alternativ panel cut-out d=15,3

Part no:	Description:	Pos	Length L:	Wire:
43-01083	SAL - 12 - FS5.1 - 0,5 - 9	5	0,5m	AWG 24 PVC, UL
43-xxxxx	SAL - 12 - FS5.1 - ... - 9	5	x	

DO NOT ALTER CAD DRAWING BY HAND Directive 2002/95/EC RoHS compliant	Index: d 11.02.13 MG Ä4631 Data sheet revised, technical specification changed, materials corrected	dim. in mm	<b>title:</b> Male socket M12x1 with wire, frontmounting, PG9										
	tolerance of wire: L ≤ 0,5m: L + 20mm L > 0,5m: L + 4%	<table border="1" style="font-size: 8px;"> <tr> <td></td> <td>date</td> <td>name</td> </tr> <tr> <td>drawn</td> <td>01.03.07</td> <td>Fromm</td> </tr> <tr> <td>appd.</td> <td>01.03.07</td> <td>Mankopf</td> </tr> </table>				date	name	drawn	01.03.07	Fromm	appd.	01.03.07	Mankopf
		date	name										
	drawn	01.03.07	Fromm										
appd.	01.03.07	Mankopf											
<table border="1" style="font-size: 8px;"> <tr> <td>general tolerance:</td> <td>0 ± 0,50mm</td> </tr> <tr> <td></td> <td>0,0 ± 0,25mm</td> </tr> <tr> <td></td> <td>0,00 ± 0,10mm</td> </tr> </table>	general tolerance:	0 ± 0,50mm		0,0 ± 0,25mm		0,00 ± 0,10mm	<b>CONEC</b> ®						
general tolerance:	0 ± 0,50mm												
	0,0 ± 0,25mm												
	0,00 ± 0,10mm												
THIS DRAWING MAY NOT BE COPIED OR REPRODUCED IN ANY WAY, AND MAY NOT BE PASSED ON TO A THIRD PARTY WITHOUT WRITTEN PERMISSION. OWNERSHIP AND COPYRIGHT OF CONEC GmbH		<b>part no:</b> see table											