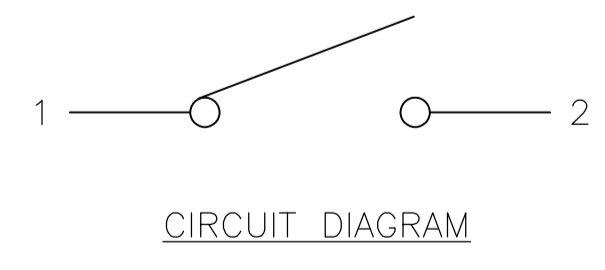
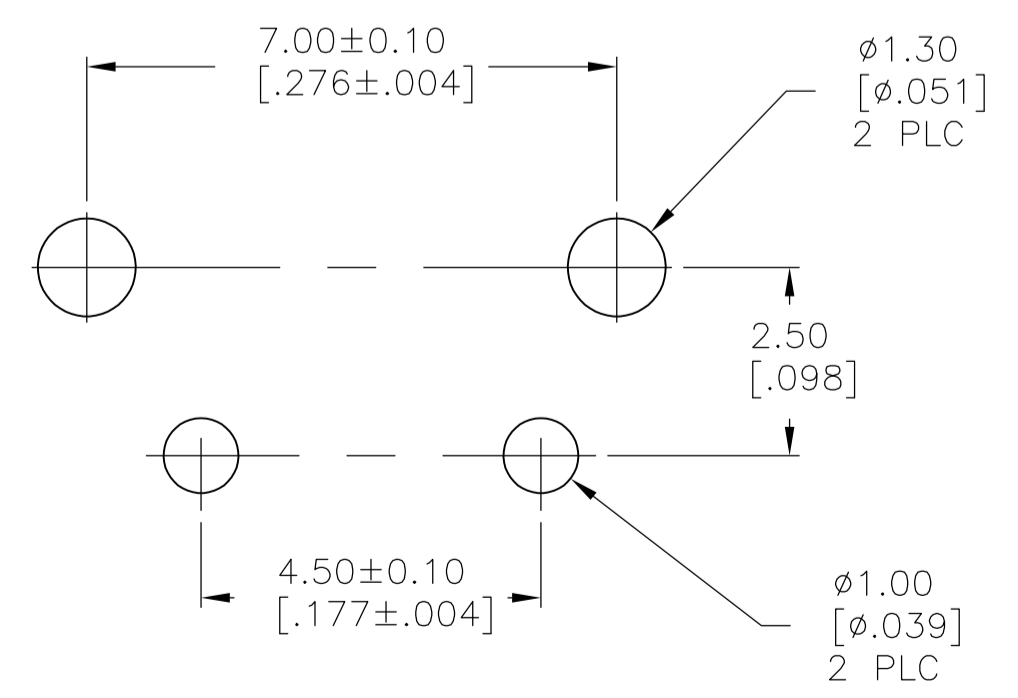
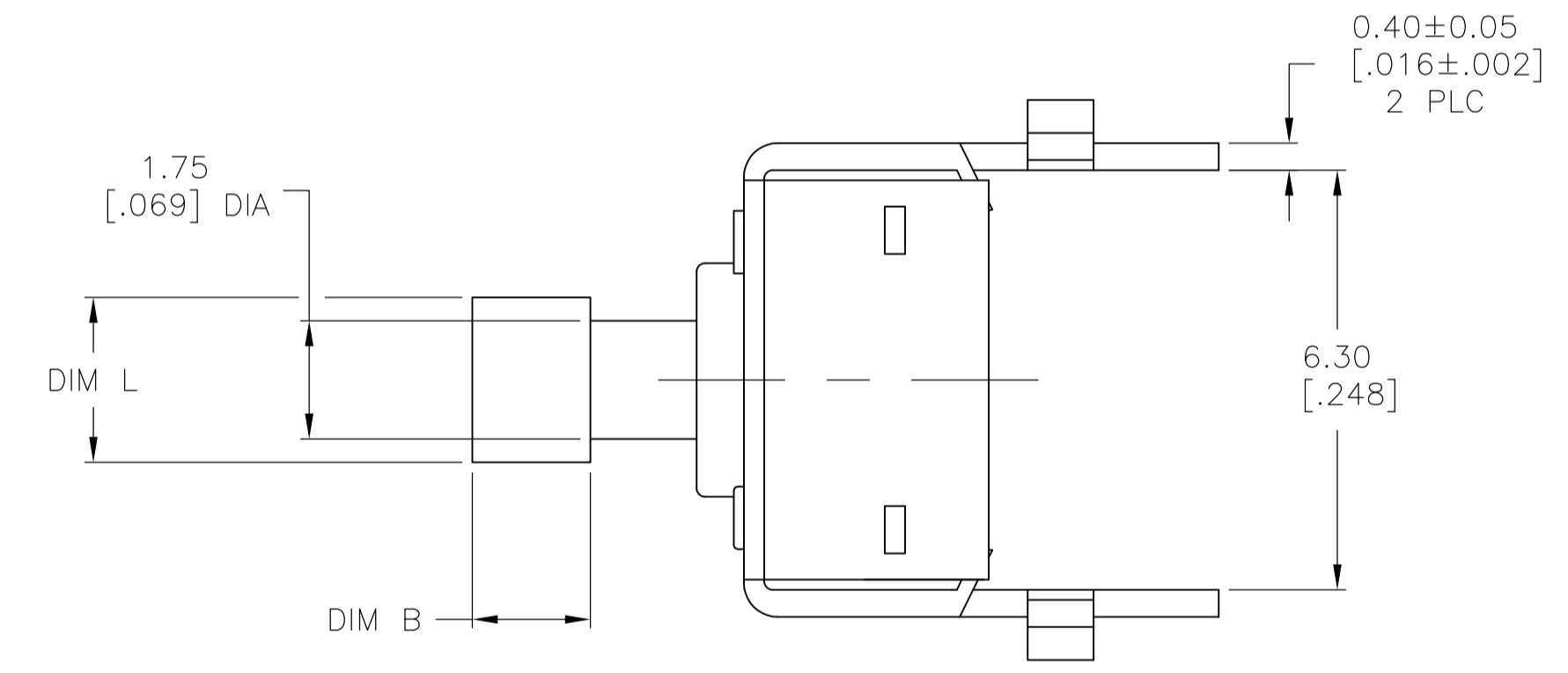
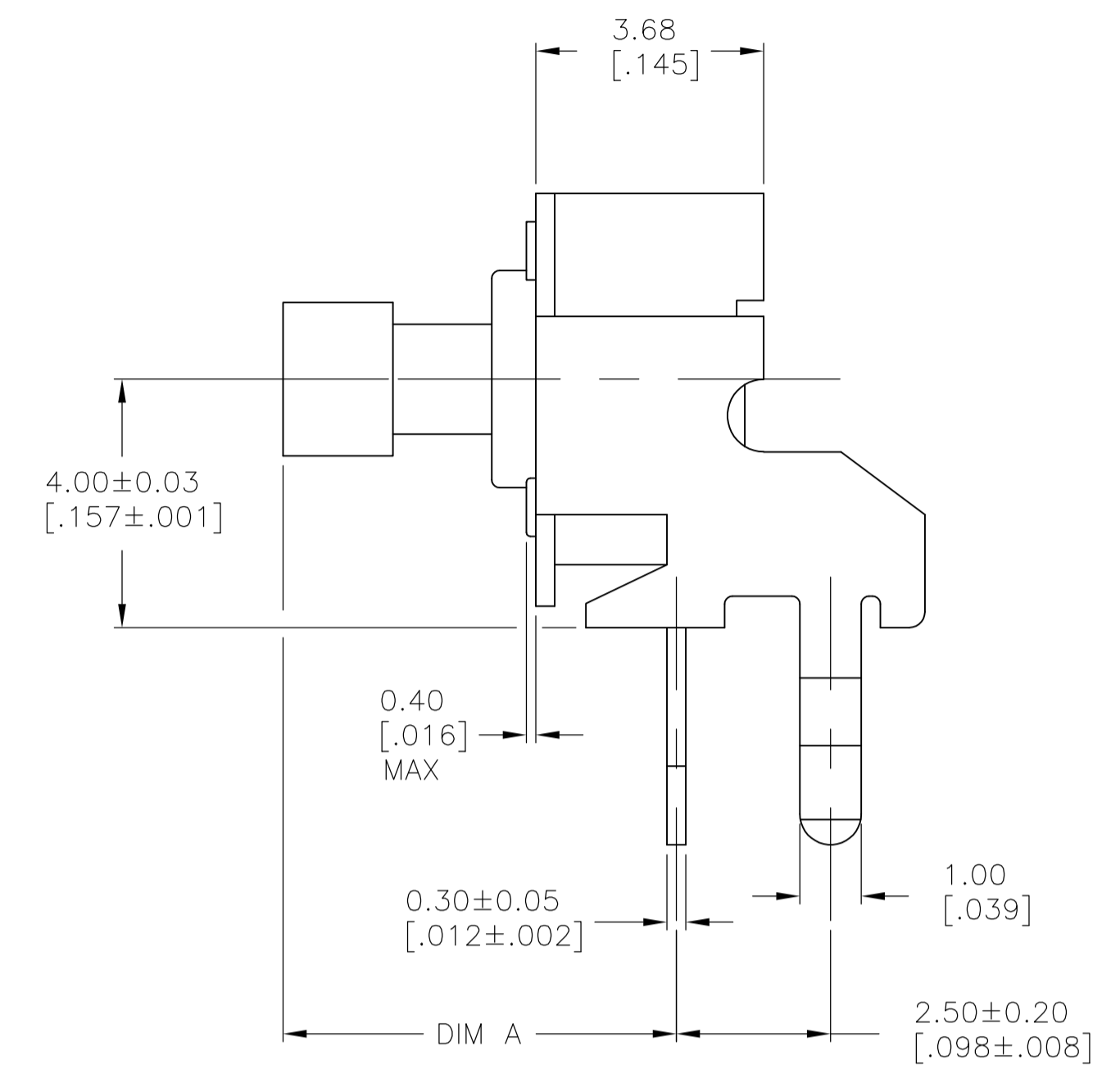
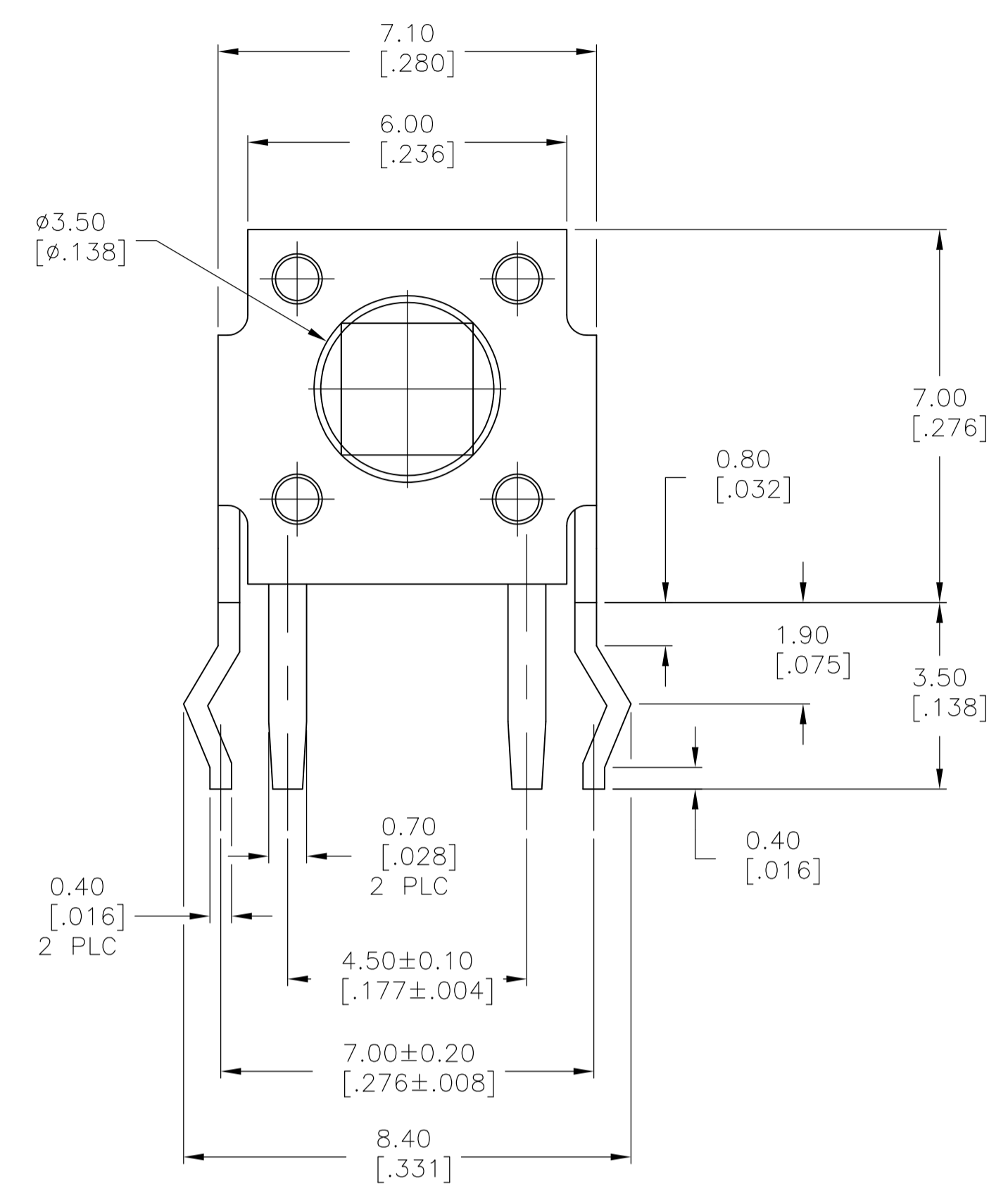


REVISIONS					
P	LTR	DESCRIPTION	DATE	DMN	APVD
G		REVISED PER ECO-17-002273	10OCT2017	RK	AS



SPECIFICATIONS:

CASE: NYLON, UL94HB, 30% GLASS, COLOR: BLACK.  
 FRAME: STEEL, TIN PLATED.  
 ACTUATOR BUTTON: ACETAL, COLOR: SEE TABLE  
 MOVING CONTACT: COPPER ALLOY, SILVER CLAD.  
 FIXED CONTACT/TERMINALS: COPPER ALLOY, SILVER/NICKEL PLATE.

ELECTRICAL:  
 MAX CONTACT RATING: 50MILLIAMPS@24V DC  
 MIN CONTACT RATING: 10MICROAMPS@1V DC  
 INITIAL CONTACT RESISTANCE: 100 MILLIOHMS MAX  
 INSULATION RESISTANCE: 100 MEGOHMS @ 100 VDC MIN.  
 DIELECTRIC STRENGTH: 500 VAC 50/60 Hz FOR 1 MINUTE  
 LIFE EXPECTANCY: 100,000 CYCLES MIN

MECHANICAL:  
 ACTUATION FORCE: SEE TABLE  
 ACTUATION TRAVEL: 0.25 +0.2/-0.1 mm [0.10 in. +0.08/-0.04] APPROX.

ENVIRONMENTAL:  
 OPERATING TEMPERATURE: -35°C TO +85°C  
 STORAGE TEMPERATURE: -35°C TO +85°C  
 SOLDER HEAT RESISTANCE PER 109-202, CONDITION B

SOLDERABILITY:  
 SPECIFICATION EIA-364-52, CLASS 1, CATEGORY 2

NOTES:

- ALL MATERIALS AND FINISHES SHALL COMPLY WITH EU DIRECTIVE 2002/95/EC OF 27JAN2003 (ROHS)

OBSOLETE	260±50 GRAMS	ORANGE	2.79[0.110]	1.57[0.062]	6.15[.242]	FSMRACAAS	1825657-2
	260±50 GRAMS	YELLOW	2.79[0.110]	1.78[0.070]	6.35[.250]	FSMRACDAA	1825657-1
SUPERSEDED BY 1825968-2	160±50 GRAMS	BLUE	2.39[0.094]	1.78[0.070]	6.35[.250]	FSMRACD	9-1437565-9
	160±50 GRAMS	BLACK	2.79[0.110]	1.78[0.070]	6.35[.250]	FSMRACDA	1437566-1
	ACTUATION FORCE	ACTUATOR COLOR	DIM L	DIM B	DIM A	T&B P/N	TE P/N

RECOMMENDED HOLE LAYOUT  
 TOLERANCE ±.002 UNLESS OTHERWISE NOTED

THIS DRAWING IS A CONTROLLED DOCUMENT.		DIN R BROWN 02OCT01	TE Connectivity	
DIMENSIONS: mm		CHK H WYNKOOP 02OCT01		
TOLERANCES UNLESS OTHERWISE SPECIFIED:		APVD H WYNKOOP 02OCT01	NAME	
0 PLC ± -	1 PLC ± -	PRODUCT SPEC		
2 PLC ± 0.30[0.012]	3 PLC ± -	APPLICATION SPEC		
4 PLC ± -	ANGLES ± -	SIZE CASE CODE DRAWING NO		
MATERIAL	FINISH	WEIGHT		RESTRICTED TO
		A1 00779 C=1437566-1		
CUSTOMER DRAWING		SCALE 10:1	SHEET 1 of 1	REV G