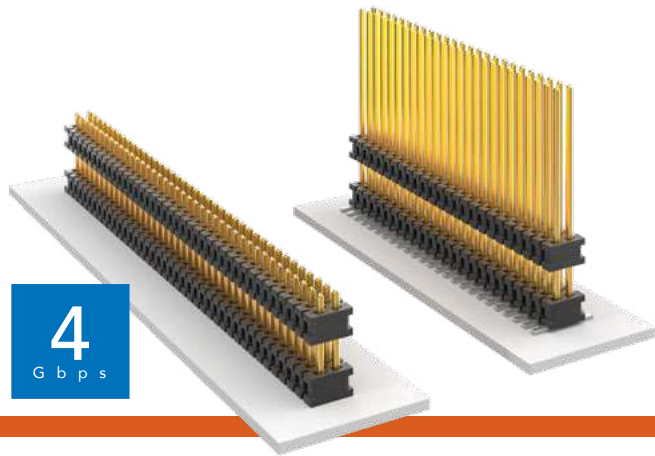


FLEX STACK

MICRO BOARD STACKER

(1.27 mm) .050" PITCH • FW SERIES



FW

Board Mates:

CLP, FLE

Cable Mates:

FFSD

SPECIFICATIONS

Insulator Material:

Black Liquid Crystal Polymer

Terminal Material:

Phosphor Bronze

Plating:

Sn or Au over 50 μ" (1.27 μm) Ni

Operating Temp Range:

-55 °C to +125 °C

PROCESSING

Lead-Free Solderable:

Yes

SMT Lead Coplanarity:

(0.10 mm) .004" max (02-30)

(0.15 mm) .006" max (31-50)*

*(.004" stencil solution

may be available; contact

IPG@samtec.com)

MATED HEIGHT

| FW LEAD STYLE | CLP LEAD STYLE | MATED HEIGHT* |
|----------------------|----------------|-------------------|
| FW-XX-03-X-X-233-065 | -02 | 8.13 mm) .329" |
| FW-XX-03-X-X-303-065 | | 9.91 mm) .390" |

*Processing conditions will affect mated height.

ALSO AVAILABLE

Smaller stack heights
(MOQ Required)

Notes:

For added mechanical stability, Samtec recommends mechanical board spacers be used in applications with gold or selective gold plated connectors. Contact ipg@samtec.com for more information.

This Series is non-standard, non-returnable.

| FW | NO. OF PINS PER ROW | LEAD STYLE | PLATING OPTION | D | STACKER HEIGHT | POST HEIGHT | OPTION |
|----|---------------------|------------|----------------|---|----------------|-------------|--------|
|----|---------------------|------------|----------------|---|----------------|-------------|--------|

02 thru 50

Specify LEAD STYLE from chart

-F
= Gold flash on post, Matte Tin on tail

-L
= 10 μ" (0.25 μm) Gold on post, Matte Tin on tail

-G
= 10 μ" (0.25 μm) Gold on post, Gold flash on tail

-"XXX"
= Stacker Height (in inches)

Example:
-250 = (6.35 mm) .250"

-"XXX"
= Post Height (in inches)

(1.65 mm) .065" minimum

Example:
-.065 = (1.65 mm) .065"

-ES
= End Shroud (-075 post height only. Mate only with CLP) (5.46 mm) .215" to (15.49 mm) .610" stacker height only 9 pins/row min.

-EP
= End Shroud with Guide Post (-075 post height only. Mate only with CLP) (5.46 mm) .215" to (15.49 mm) .610" stacker height only 9 pins/row min.

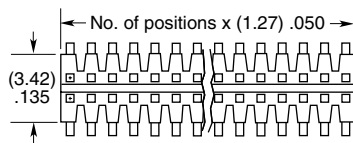
-A
= Alignment Pin (3 positions min.) (5.46 mm) .215" to (15.75 mm) .620" stacker height only (SMT only)

-P
= Pick & Place Pad (5 positions min.) (SMT only)

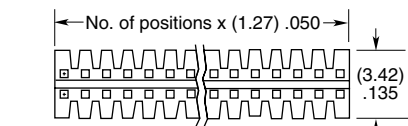
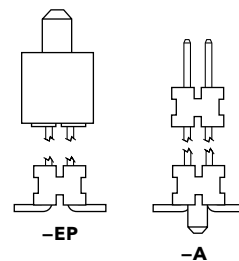
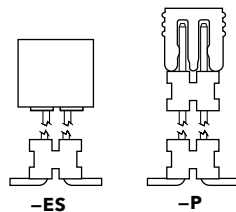
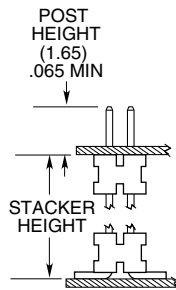
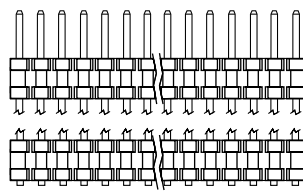
-TR
= Tape & Reel (Max overall height = Post+Stacker Height+Pad+Alignment Pin = (17.78) .700") (SMT only)

-FR
= Full Reel Tape & Reel (must order max. quantity per reel; contact Samtec for quantity breaks) (SMT only)

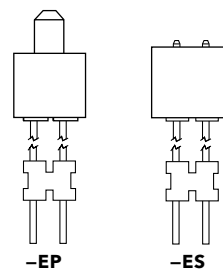
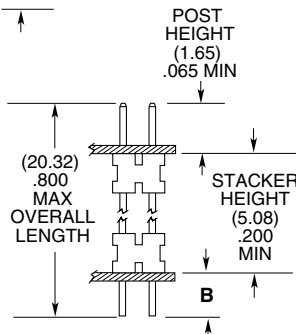
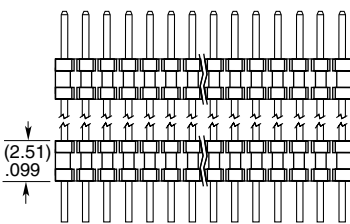
| LEAD STYLE | STACKER HEIGHT | STACKER + POST |
|------------|--------------------------------|---------------------------------|
| -03 | (5.46) to (8.51) .215 to .335 | (7.11) to (10.16) .280 to .400 |
| -05 | (8.64) to (15.49) .340 to .610 | (10.29) to (17.15) .405 to .675 |



SURFACE MOUNT



THROUGH-HOLE



| LEAD STYLE | TAIL (B) |
|------------|-------------|
| -01 | (1.14) .045 |
| -02 | (1.91) .075 |
| -04 | (2.29) .090 |