

PART STATUS	PART NO. (PACKED IN CARTON)	CKT SIZE	CONTACTS LUBRICATION
TOOLED	87537-8816	68	YES
TOOLED	87537-8810	68	NIL

OBS TIN/LEAD P/N
 EC NO: S2006-0729
 DRWING: LONG 2006/02/27
 CHKD: SHONG 2006/02/27
 APPR: KCLING 2006/02/28

QUALITY SYMBOLS
 ▽=0
 ▽=2

GENERAL TOLERANCES (UNLESS SPECIFIED)

	mm	INCH
4 PLACES	± ---	± ---
3 PLACES	± ---	± ---
2 PLACES	± 0.25	± ---
1 PLACE	± ---	± ---

ANGULAR ± 3 °

DRAFT WHERE APPLICABLE
 MUST REMAIN
 WITHIN DIMENSIONS

DIMENSION STYLE
 MM ONLY

DRAWN BY: PTLIM
 DATE: 1999/01/05

CHECKED BY: SQUEK
 DATE: 1999/01/25

APPROVED BY: KCLING
 DATE: 1999/01/25

MATERIAL NO. SEE TABLE

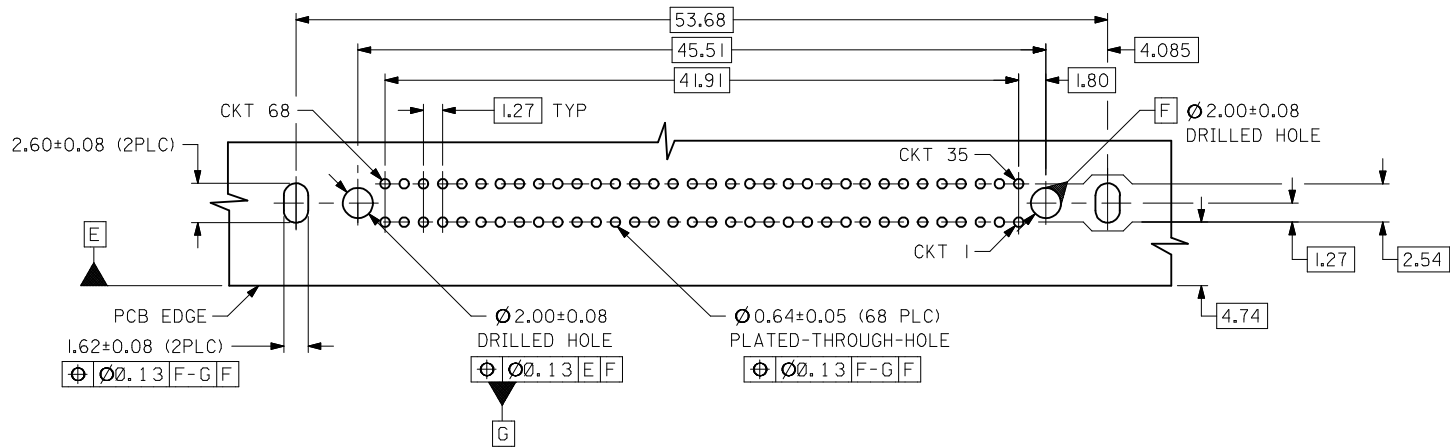
SCALE: NTS
 DESIGN UNITS: METRIC
 THIRD ANGLE PROJECTION

TITLE: EBBI, RCPT., RVS-BLND-M
 1.27MM CTR., 68 CKTS, BTB
 7.5MM HT., R/A

MOLEX INCORPORATED

DOCUMENT NO. SD-87537-005
 SHEET NO. 1 OF 2

THIS DRAWING CONTAINS INFORMATION THAT IS PROPRIETARY TO MOLEX INCORPORATED AND SHOULD NOT BE USED WITHOUT WRITTEN PERMISSION

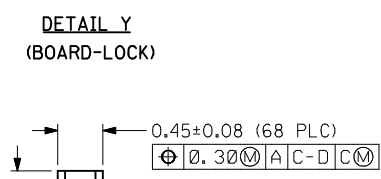
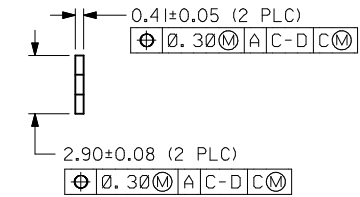
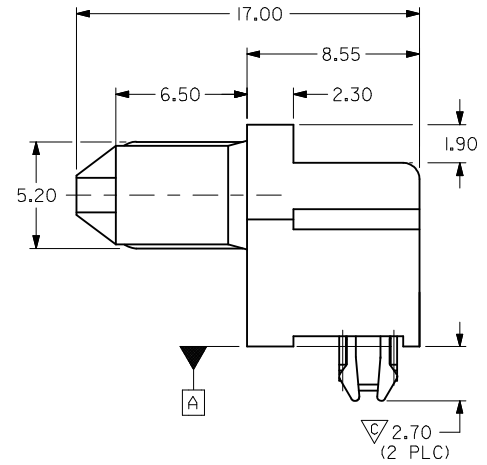
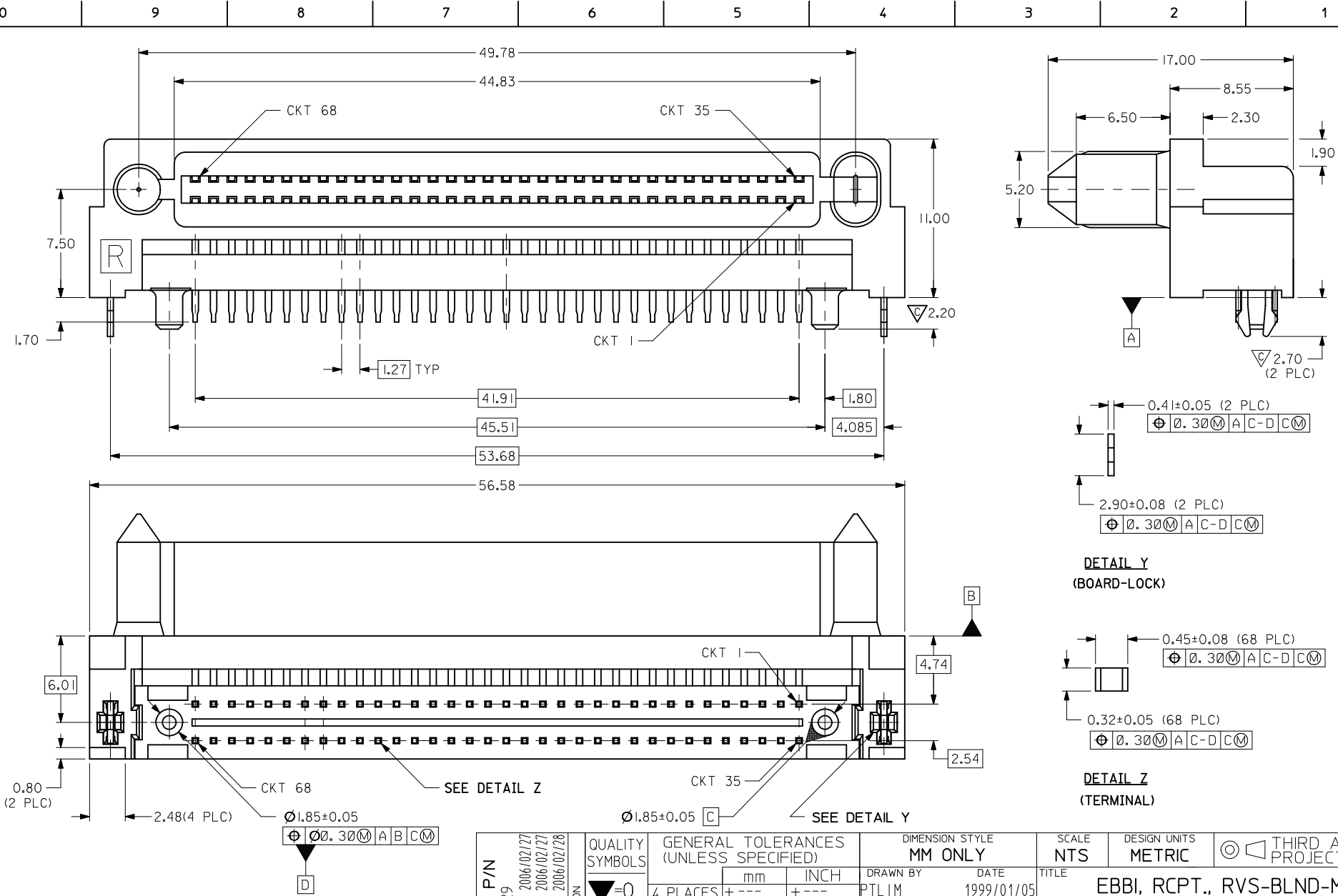


RECOMMENDED PC BOARD LAYOUT \triangle
COMPONENT SIDE

NOTES:

- 1 MATERIALS:
HOUSING - HIGH TEMPERATURE THERMOPLASTIC, GLASS FILLED, UL94V-0, COLOR : BLACK
TERMINAL - COPPER ALLOY
- 2 PLATING:
0.76 μ m MIN. GOLD IN SELECTIVE CONTACT AREA AND 2.54 μ m MIN. TIN IN SOLDER TAIL AREA, BOTH OVER 1.27 μ m MIN. NICKEL.
3. PRODUCT SPECIFICATION : PS-87537-0001
- \triangle RECOMMENDED P.C. BOARD THICKNESS IS 1.20+/-0.05MM.
- 5 CIRCUIT #58 TO BE RECESSED 0.50mm BEHIND ALL OTHER CONTACTS.
- \triangle PART IS LUBRICATED AT TERMINAL CONTACTS TO MINIMISE UNMATE FORCE.

OBS TIN/LEAD P/N EC NO: S2006-0729 DRWN:MLONG 2006/02/27 CHKD:SHONG 2006/02/27 APPR:KCLING 2006/02/28	DESCRIPTION	QUALITY SYMBOLS	GENERAL TOLERANCES (UNLESS SPECIFIED)		DIMENSION STYLE		SCALE	DESIGN UNITS	THIRD ANGLE PROJECTION		
		$\nabla=0$ $\nabla=0$		mm	INCH	MM ONLY		NTS	METRIC	TITLE EBBI, RCPT., RVS-BLND-M 1.27MM CTR, 68 CKTS, BTB 7.5MM HT., R/A MOLEX INCORPORATED DOCUMENT NO. SD-87537-005 SHEET NO. 2 OF 2	
			4 PLACES	± ---	± ---	DRAWN BY	DATE	TITLE			
			3 PLACES	± ---	± ---	CHECKED BY	DATE	TITLE			
		2 PLACES	± 0.25	± ---	SQUEK	1999/01/25					
		1 PLACE	± ---	± ---	APPROVED BY	DATE					
		ANGULAR ± 3 °		KCLING		1999/01/25					
		DRAFT WHERE APPLICABLE MUST REMAIN WITHIN DIMENSIONS		MATERIAL NO.		SEE TABLE					
				SIZE		A3		THIS DRAWING CONTAINS INFORMATION THAT IS PROPRIETARY TO MOLEX INCORPORATED AND SHOULD NOT BE USED WITHOUT WRITTEN PERMISSION			



PART STATUS	PART NO. (PACKED IN CARTON)	CKT SIZE	CONTACTS LUBRICATION
TOOLED	87537-8816	68	YES
TOOLED	87537-8810	68	NIL

OBS TIN/LEAD P/N
 EC NO: S2006-0729
 DRWING: LONG 2006/02/27
 CHKD: SHONG 2006/02/27
 APPR: KCLING 2006/02/28

QUALITY SYMBOLS
 ▽=0
 ▽=2

GENERAL TOLERANCES (UNLESS SPECIFIED)

	mm	INCH
4 PLACES	± ---	± ---
3 PLACES	± ---	± ---
2 PLACES	± 0.25	± ---
1 PLACE	± ---	± ---

ANGULAR ± 3 °

DRAFT WHERE APPLICABLE
 MUST REMAIN
 WITHIN DIMENSIONS

DIMENSION STYLE
 MM ONLY

DRAWN BY: PTLIM DATE: 1999/01/05
 CHECKED BY: SQUEK DATE: 1999/01/25
 APPROVED BY: KCLING DATE: 1999/01/25

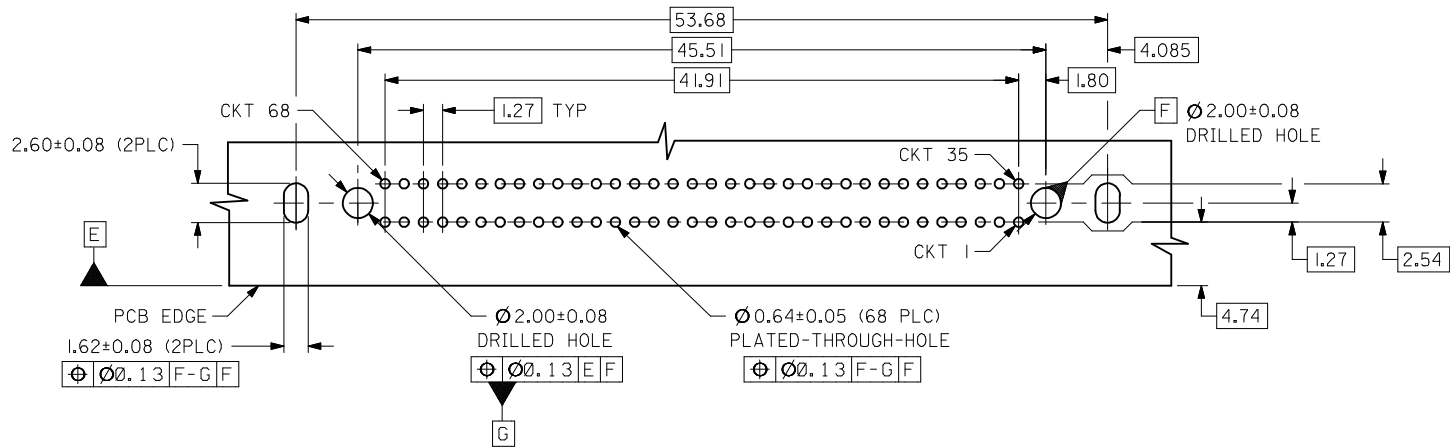
MATERIAL NO. SEE TABLE

SCALE: NTS
 DESIGN UNITS: METRIC
 THIRD ANGLE PROJECTION

TITLE: EBBI, RCPT., RVS-BLND-M
 1.27MM CTR., 68 CKTS, BTB
 7.5MM HT., R/A

MOLEX INCORPORATED
 DOCUMENT NO. SD-87537-005
 SHEET NO. 1 OF 2

THIS DRAWING CONTAINS INFORMATION THAT IS PROPRIETARY TO MOLEX INCORPORATED AND SHOULD NOT BE USED WITHOUT WRITTEN PERMISSION



RECOMMENDED PC BOARD LAYOUT \triangle
COMPONENT SIDE

NOTES:

- 1 MATERIALS:
HOUSING - HIGH TEMPERATURE THERMOPLASTIC, GLASS FILLED, UL94V-0, COLOR : BLACK
TERMINAL - COPPER ALLOY
- 2 PLATING:
0.76 μ m MIN. GOLD IN SELECTIVE CONTACT AREA AND 2.54 μ m MIN. TIN IN SOLDER TAIL AREA, BOTH OVER 1.27 μ m MIN. NICKEL.
3. PRODUCT SPECIFICATION : PS-87537-0001
- \triangle RECOMMENDED P.C. BOARD THICKNESS IS 1.20+/-0.05MM.
- 5 CIRCUIT #58 TO BE RECESSED 0.50mm BEHIND ALL OTHER CONTACTS.
- \triangle PART IS LUBRICATED AT TERMINAL CONTACTS TO MINIMISE UNMATE FORCE.

OBS TIN/LEAD P/N EC NO: S2006-0729 DRWN:MLONG 2006/02/27 CHKD:SHONG 2006/02/27 APPR:KCLING 2006/02/28	DESCRIPTION	QUALITY SYMBOLS	GENERAL TOLERANCES (UNLESS SPECIFIED)		DIMENSION STYLE		SCALE	DESIGN UNITS	THIRD ANGLE PROJECTION		
		$\nabla=0$ $\nabla=0$			MM ONLY		NTS	METRIC			
				mm	INCH	DRAWN BY	DATE	TITLE			
			4 PLACES	± ---	± ---	PTLIM	1999/01/05	EBBI, RCPT., RVS-BLND-M 1.27MM CTR, 68 CKTS, BTB 7.5MM HT., R/A			
	3 PLACES	± ---	± ---	CHECKED BY	DATE	MOLEX INCORPORATED					
	2 PLACES	± 0.25	± ---	SQUEK	1999/01/25					DOCUMENT NO.	
	1 PLACE	± ---	± ---	APPROVED BY	DATE	SD-87537-005		2 OF 2			
		ANGULAR ± 3 °		MATERIAL NO.		THIS DRAWING CONTAINS INFORMATION THAT IS PROPRIETARY TO MOLEX INCORPORATED AND SHOULD NOT BE USED WITHOUT WRITTEN PERMISSION					
		DRAFT WHERE APPLICABLE MUST REMAIN WITHIN DIMENSIONS		SIZE							
				A3							