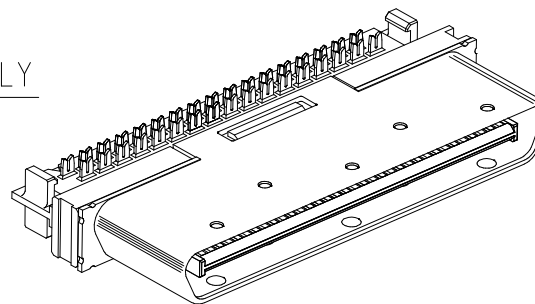
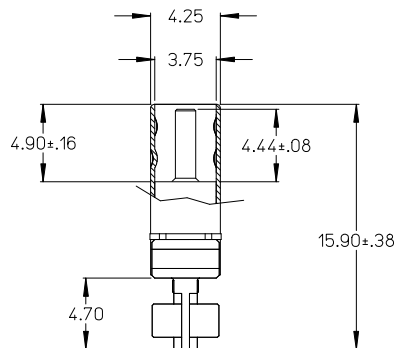
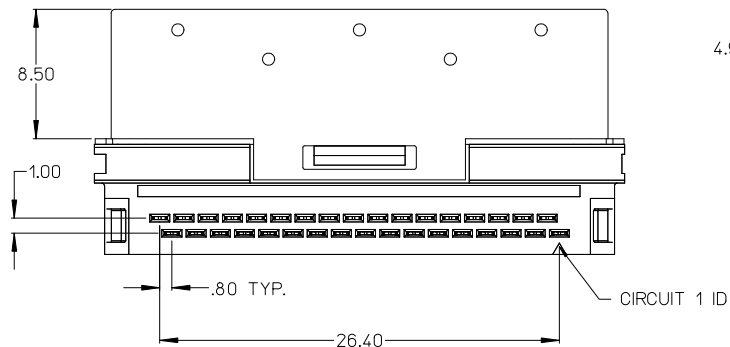


PLUG ASSEMBLY

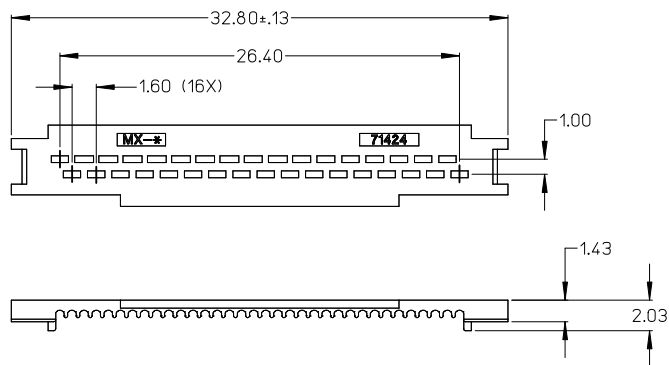


NOTES:

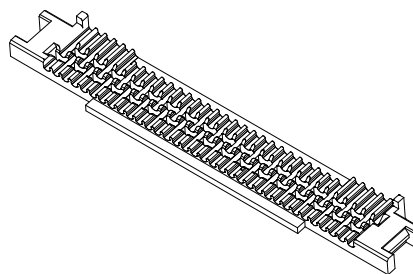
1. MATERIALS:
HOUSING: GLASS FILLED LIQUID CRYSTAL POLYMER (LCP), NATURAL; UL 94V-0
TERMINALS: COPPER ALLOY
SHIELD: ALUMINUM KILLED STEEL
2. FINISH: TERMINALS: 0.05 MICROMETER MINIMUM GOLD FLASH OVER 0.75 MICROMETER MINIMUM PALLADIUM NICKEL IN THE CONTACT AREA
NICKEL UNDERPLATE OVERALL
SHIELD: 2.54 MICROMETER MINIMUM BRIGHT NICKEL OVER COPPER FLASH.
3. ASSEMBLY MATES WITH RECEPTACLE #71430 AND 73776.
4. PACKAGED PER PK-70873-0851.
5. PRODUCT CONFORMS TO PS-71425-9999.
6. FOR DIE CAST SHELL KITS SEE SD-73796-008.
7. PART COMPLIES WITH CLASS B OF COSMETIC SPECIFICATION PS-45499-002.
8. TO BE USED WITH 28-30 AWG STRANDED WIRE OR 30 AWG SOLID CORE WIRE.
9. SEE AS-71425-001 FOR WIRE TERMINATION GUIDELINES.



SECTION A-A



WIRE COVER



KIT COMPONENTS			
KIT ITEM #	DESCRIPTION	QUANTITY	ITEM PART #
71425-3001	PLUG ASSEMBLY	1	71425-0002
	WIRE COVER	2	71424-0001

CLARIFY NOTE 7 EC NO: UCP2011-0353 DRW: BBARKER 2010/08/09 CHKD: MILLER 2010/11/23 APPR: SMILLER	DESCRIPTION 2010/11/23	QUALITY SYMBOLS ▽=0 ▽=0	GENERAL TOLERANCES (UNLESS SPECIFIED) <table border="1"> <tr> <th></th> <th>mm</th> <th>INCH</th> </tr> <tr> <td>4 PLACES</td> <td>± .05</td> <td>± .002</td> </tr> <tr> <td>3 PLACES</td> <td>± .03</td> <td>± .001</td> </tr> <tr> <td>2 PLACES</td> <td>± .025</td> <td>± .001</td> </tr> <tr> <td>1 PLACE</td> <td>± .015</td> <td>± .0005</td> </tr> </table>		mm	INCH	4 PLACES	± .05	± .002	3 PLACES	± .03	± .001	2 PLACES	± .025	± .001	1 PLACE	± .015	± .0005	DIMENSION STYLE MM ONLY	SCALE METRIC	DESIGN UNITS METRIC	THIRD ANGLE PROJECTION
		mm	INCH																			
	4 PLACES	± .05	± .002																			
	3 PLACES	± .03	± .001																			
2 PLACES	± .025	± .001																				
1 PLACE	± .015	± .0005																				
DRAWN BY: BBARKER DATE: 2002/10/29 CHECKED BY: DMORGAN DATE: 2002/10/29 APPROVED BY: SMILLER DATE: 2010/11/23			TITLE VHDCI 0.8 MM PITCH 68 CIRCUIT IDT PLUG KIT - SALES ASSEMBLY																			
MATERIAL NO. SEE TABLE			DOCUMENT NO. SD-71425-2002																			
DRAFT WHERE APPLICABLE MUST REMAIN WITHIN DIMENSIONS			SHEET NO. 1 OF 1																			