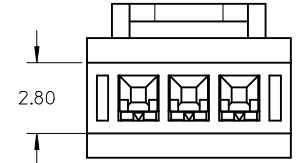
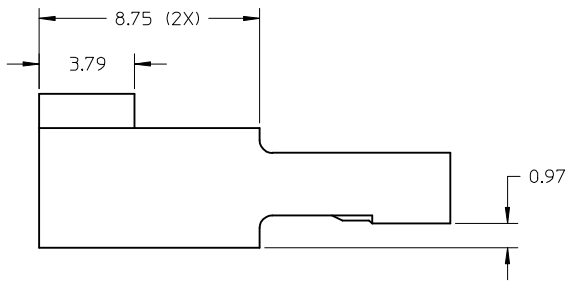
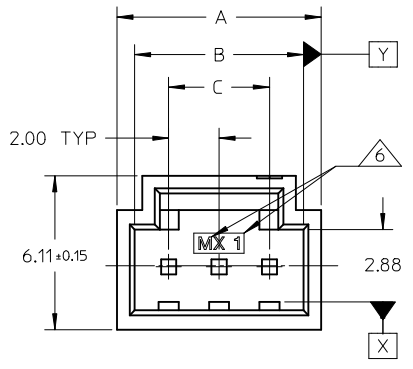
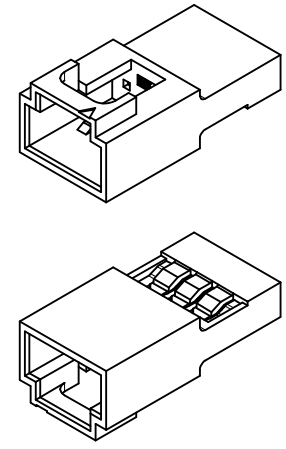
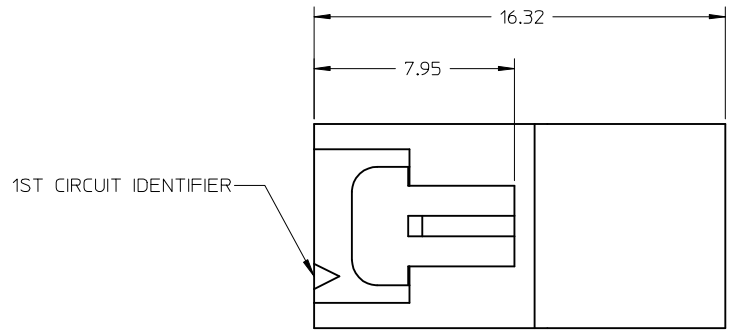


10 9 8 7 6 5 4 3 2 1

MATERIAL NO.	CKT SIZE	DIM A	DIM B	DIM C
1510980002	2	6.10	4.70	2.00
1510980003	3	8.10	6.70	4.00
1510980004	4	10.10	8.70	6.00
1510980005	5	12.10	10.70	8.00
1510980006	6	14.10	12.70	10.00
1510980007	7	16.10	14.70	12.00
1510980008	8	18.10	16.70	14.00
1510980009	9	20.10	18.70	16.00
1510980010	10	22.10	20.70	18.00



- NOTES:
- MATERIAL: POLYESTER (PBT), NON GLASS FILLED, BLACK, UL94V-0.
 - PRODUCT SPECIFICATIONS: PS-151098-0001.
 - PACKAGING: TRAY
PACKAGING SPECIFICATIONS: PK-151098-0001.
 - HOUSING TO BE ASSEMBLED WITH MOLEX MALE CRIMP TERMINAL: 151087-****.
 - HOUSING TO BE MATED WITH MOLEX CRIMP RECEPTACLE: 151100-****.
- MANUFACTURER ID AND CAVITY NO. IS LOCATED APPROXIMATELY AS SHOWN.

RELEASE TO REV A
 EC NO: S2016-0665
 DRWN:FCS00 2016/01/27
 CHKD:CGOH 2016/02/16
 APPR:KHL IM 2016/02/16

REV	DESCRIPTION	QUALITY SYMBOLS
A		$F_A=0$ $F_G=0$ $F_P=0$

GENERAL TOLERANCES (UNLESS SPECIFIED)	
	mm
4 PLACES	± ---
3 PLACES	± --- ± .005
2 PLACES	± 0.10 ± .01
1 PLACE	± 0.2 ± ---
0 PLACE	± --- ± ---

ANGULAR ± 1 °
 DRAFT WHERE APPLICABLE MUST REMAIN WITHIN DIMENSIONS

DIMENSION STYLE	
MM ONLY	
DRAWN BY	DATE
FCS00	2015/04/06
CHECKED BY	DATE
CGOH	2015/09/08
APPROVED BY	DATE
KHL IM	2015/07/02

SCALE	DESIGN UNITS	THIRD ANGLE PROJECTION
NTS	METRIC	

SALES DRAWING
 CRIMP HEADER HOUSING
 SINGLE ROW MILLIGRID

molex

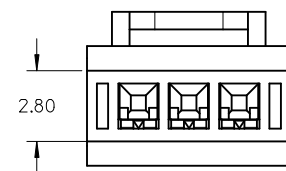
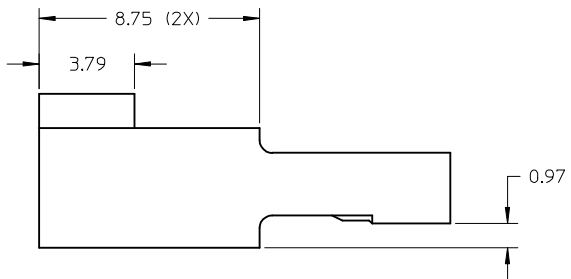
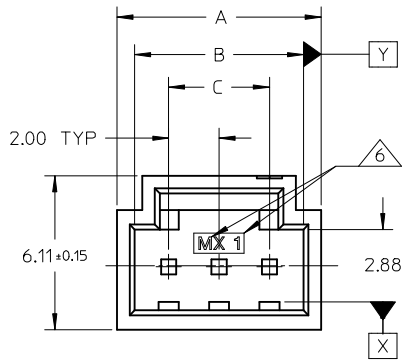
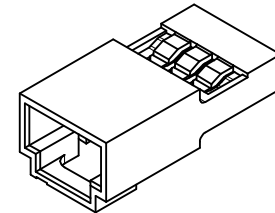
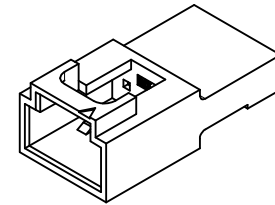
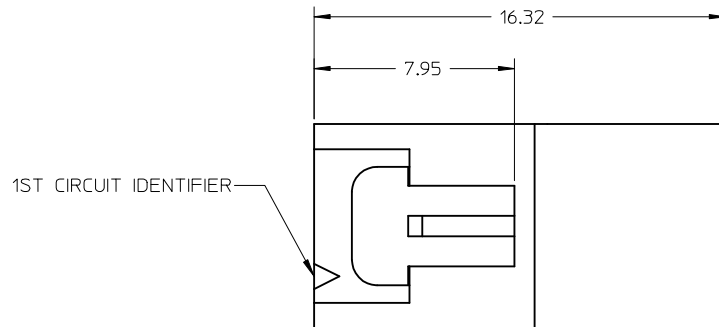
MATERIAL NO. SEE TABLE DOCUMENT NO. SD-151098-0001 SHEET NO. 1 OF 1

THIS DRAWING CONTAINS INFORMATION THAT IS PROPRIETARY TO MOLEX INCORPORATED AND SHOULD NOT BE USED WITHOUT WRITTEN PERMISSION

9 8 7 6 5 4 3 2 1

10 9 8 7 6 5 4 3 2 1

MATERIAL NO.	CKT SIZE	DIM A	DIM B	DIM C
1510980002	2	6.10	4.70	2.00
1510980003	3	8.10	6.70	4.00
1510980004	4	10.10	8.70	6.00
1510980005	5	12.10	10.70	8.00
1510980006	6	14.10	12.70	10.00
1510980007	7	16.10	14.70	12.00
1510980008	8	18.10	16.70	14.00
1510980009	9	20.10	18.70	16.00
1510980010	10	22.10	20.70	18.00



NOTES:

- MATERIAL: POLYESTER (PBT), NON GLASS FILLED, BLACK, UL94V-0.
 - PRODUCT SPECIFICATIONS: PS-151098-0001.
 - PACKAGING: TRAY
PACKAGING SPECIFICATIONS: PK-151098-0001.
 - HOUSING TO BE ASSEMBLED WITH MOLEX MALE CRIMP TERMINAL:
151087-****.
 - HOUSING TO BE MATED WITH MOLEX CRIMP RECEPTACLE:
151100-****.
- △ MANUFACTURER ID AND CAVITY NO. IS LOCATED APPROXIMATELY AS SHOWN.

RELEASE TO REV A
EC NO: S2016-0665
DRWN:FCS00 2016/01/27
CHKD:CGOH 2016/02/16
APPR:KHL IM 2016/02/16

REV	DESCRIPTION	QUALITY SYMBOLS
A		$F_A=0$ $F_G=0$ $F_P=0$

GENERAL TOLERANCES (UNLESS SPECIFIED)	
	mm INCH
4 PLACES	± --- ± ---
3 PLACES	± --- ± .005
2 PLACES	± 0.10 ± .01
1 PLACE	± 0.2 ± ---
0 PLACE	± --- ± ---
ANGULAR ± 1 °	
DRAFT WHERE APPLICABLE MUST REMAIN WITHIN DIMENSIONS	

DIMENSION STYLE	
MM ONLY	
DRAWN BY	DATE
FCS00	2015/04/06
CHECKED BY	DATE
CGOH	2015/09/08
APPROVED BY	DATE
KHL IM	2015/07/02
MATERIAL NO.	
SEE TABLE	
SIZE	A3

SCALE	DESIGN UNITS	THIRD ANGLE PROJECTION
NTS	METRIC	
<p>SALES DRAWING CRIMP HEADER HOUSING SINGLE ROW MILLIGRID</p> <p>molex</p>		
DOCUMENT NO.		SHEET NO.
SD-151098-0001		1 OF 1
THIS DRAWING CONTAINS INFORMATION THAT IS PROPRIETARY TO MOLEX INCORPORATED AND SHOULD NOT BE USED WITHOUT WRITTEN PERMISSION		

9 8 7 6 5 4 3 2 1