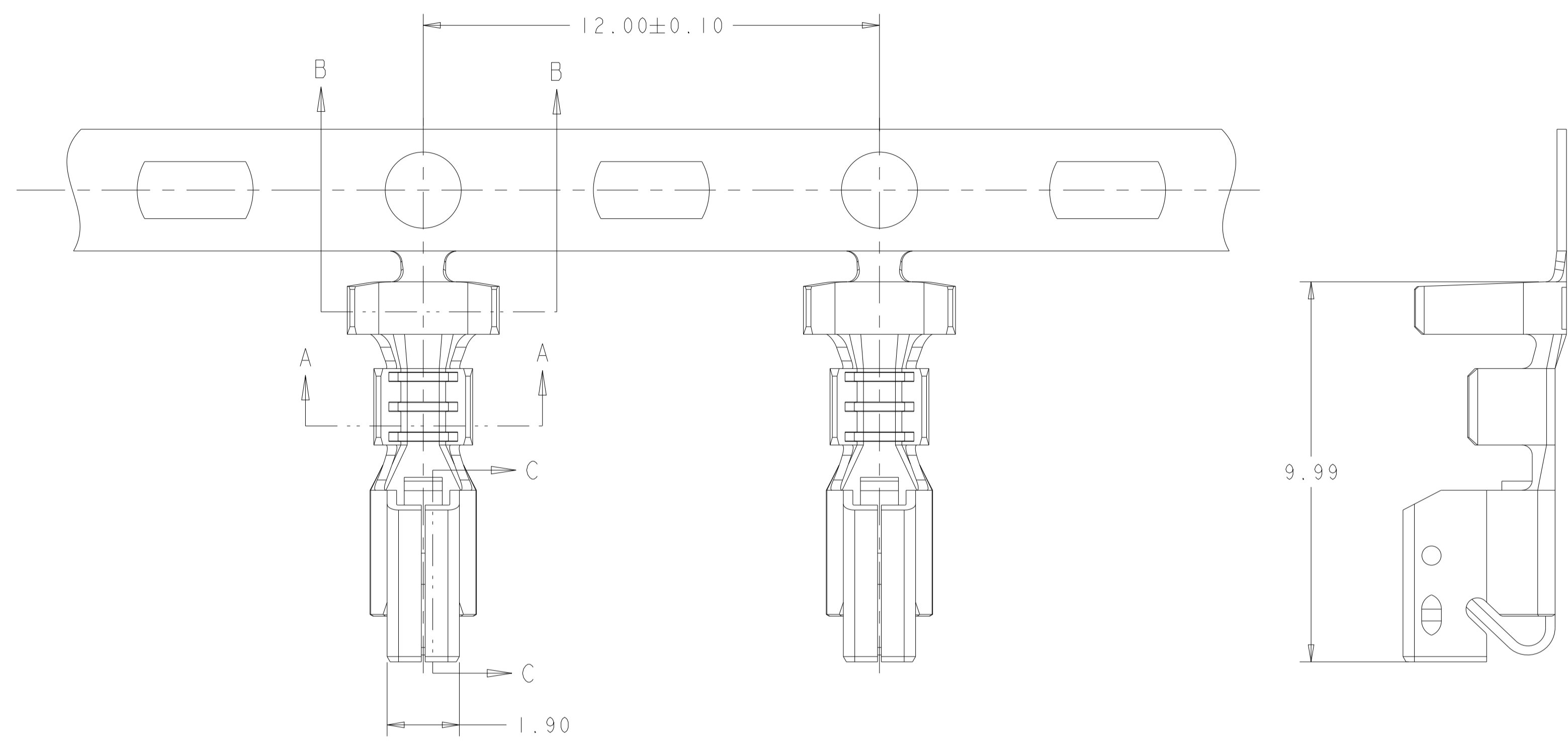
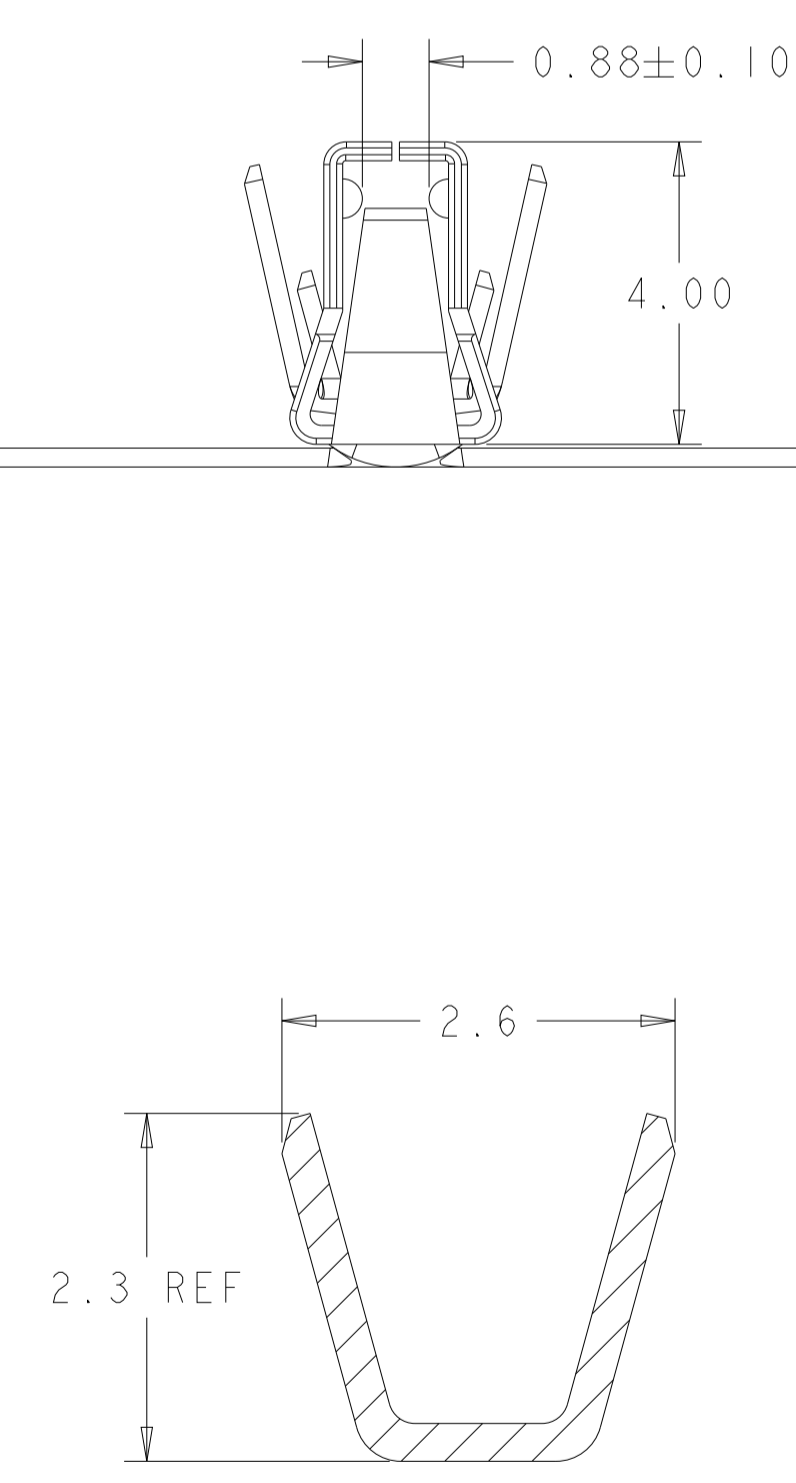
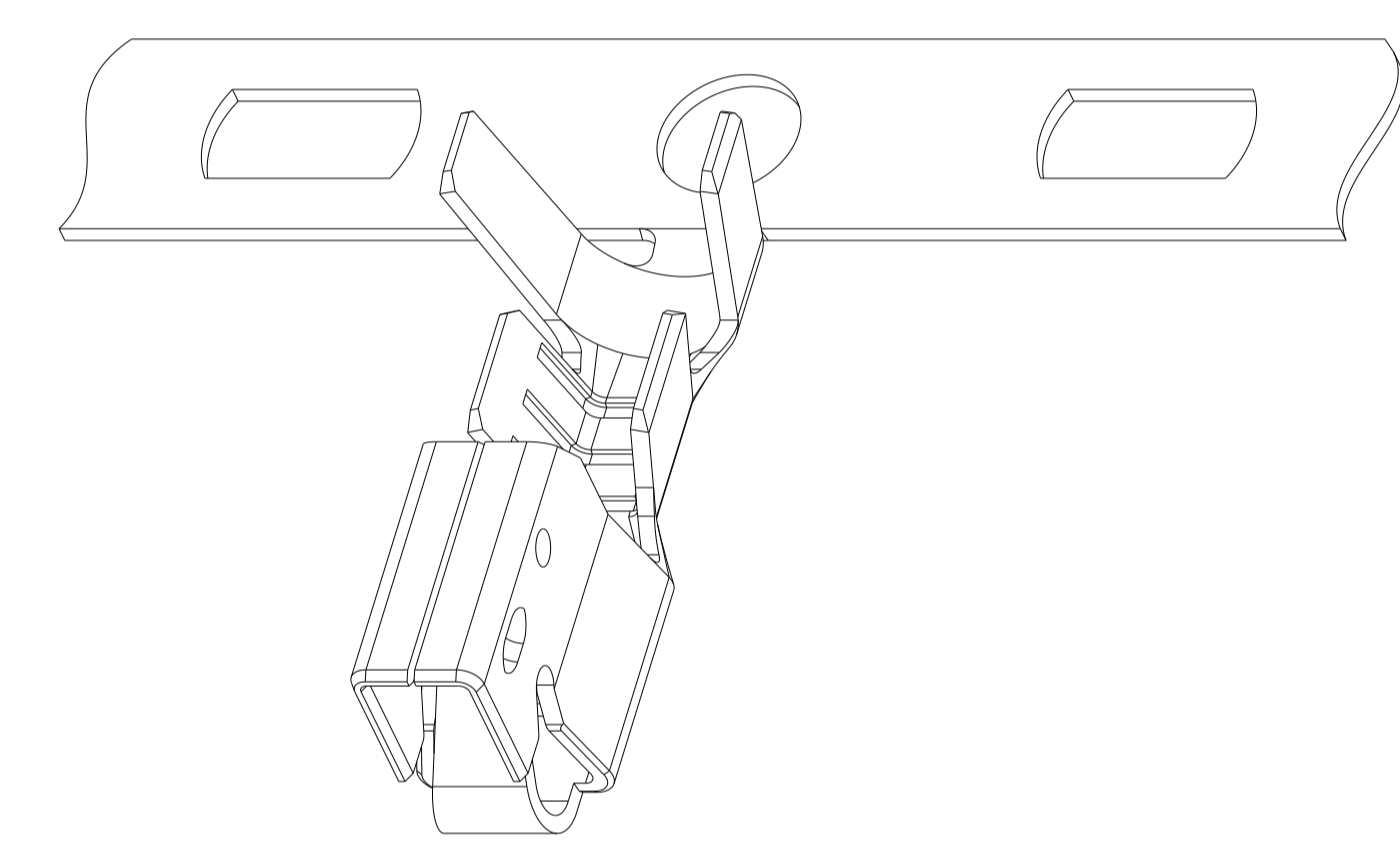


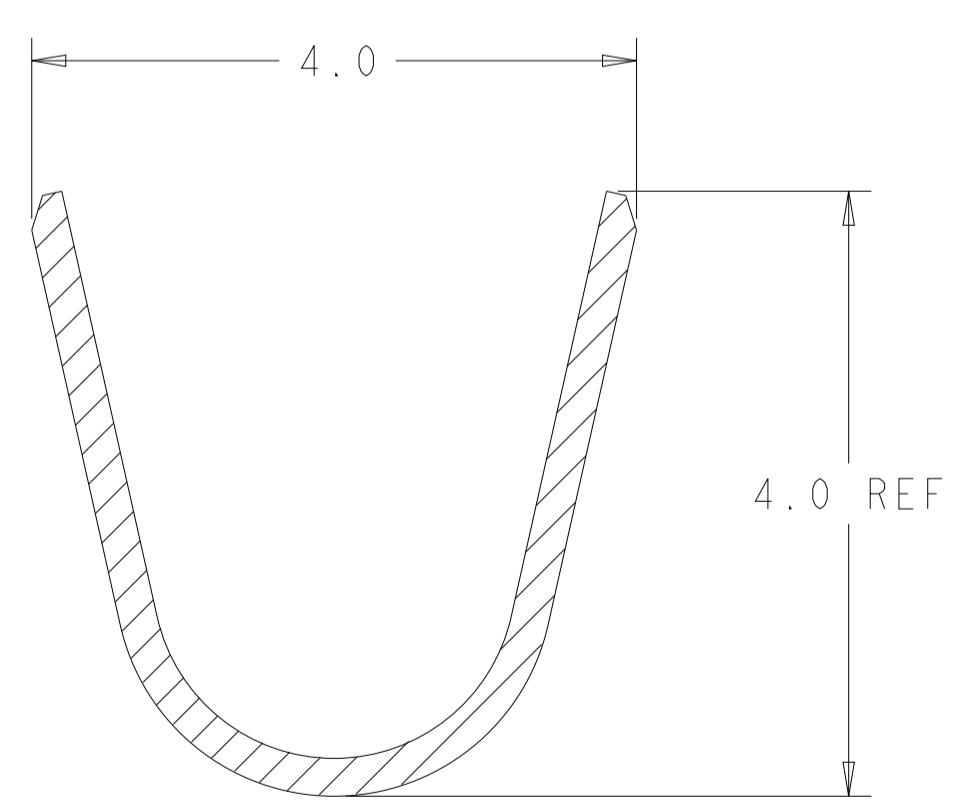
REVISIONS				
P	LTN	DESCRIPTION	DATE	APVD
A		REVISED PER ECN-21-111388	02AUG2021	W. H. D. Z
A1		REVISED PER ECR-23-165122	24FEB2023	N. H. L. C



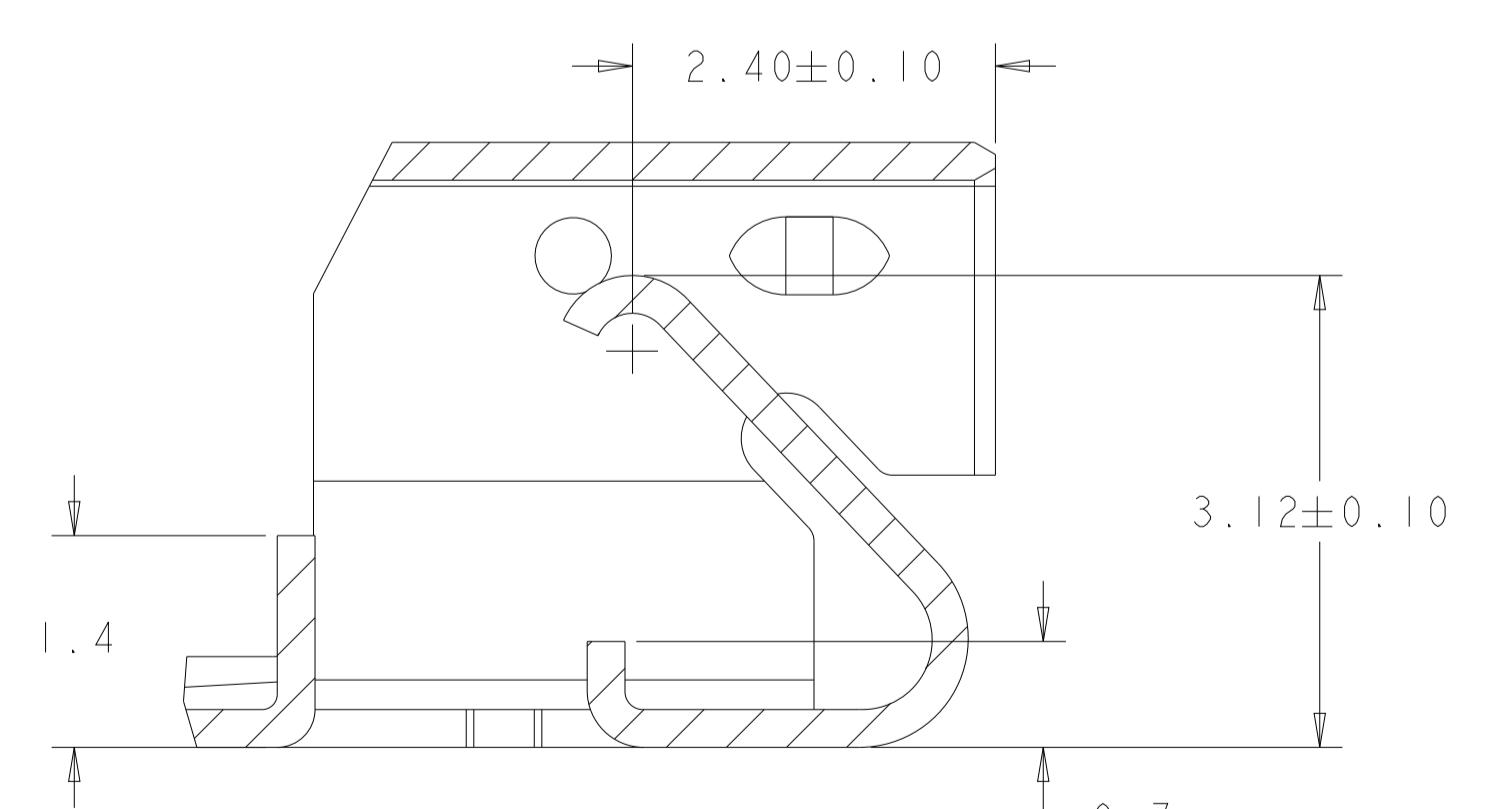
- ⚠ MATERIAL: PHOSPHOR BRONZE
FINISH: PRE-TIN
- 2. RECOMMENDED MATING PARTS: []-2371377-[] OR []-2377130-[].
- ⚠ CONTACTS COATED WITH ANTI-FRETTING LUBRICANT.
- 4. PACKAGING: ON REEL
- 5. REFERENCE CRIMP INFORMATION:
WIRE RANGE: 22-18 AWG [0.30-0.89MM²].
WIRE INSULATION RANGE: 1.70-2.90MM DIA.
- ⚠ THIS PRODUCT HAS NOT COMPLETED VALIDATION TESTING



SECTION A-A
SCALE 20:1



SECTION B-B
SCALE 20:1



SECTION C-C
SCALE 20:1

⚠	2377991-1
LUBRICANT	PART NUMBER

THIS DRAWING IS A CONTROLLED DOCUMENT.		DWN W. HUO	01JUN2021	TE Connectivity
DIMENSIONS: MM		CHK D. ZHANG	03JUN2021	
TOLERANCES UNLESS OTHERWISE SPECIFIED:		APVD D. ZHANG	03JUN2021	NAME RECEPTACLE CONTACT, LANCE-LESS 18-22AWG, ECONOMY POWER II
0 PLC	±	PRODUCT SPEC		SIZE
1 PLC	±0.25	APPLICATION SPEC		CAGE CODE
2 PLC	±0.20	MATERIAL		DRAWING NO
3 PLC	±	FINISH		RESTRICTED TO
4 PLC	±	MATERIAL		A 00779 C=2377991
ANGLES	±°	WEIGHT		SCALE N/A
		CUSTOMER DRAWING		SHEET 1 OF 1