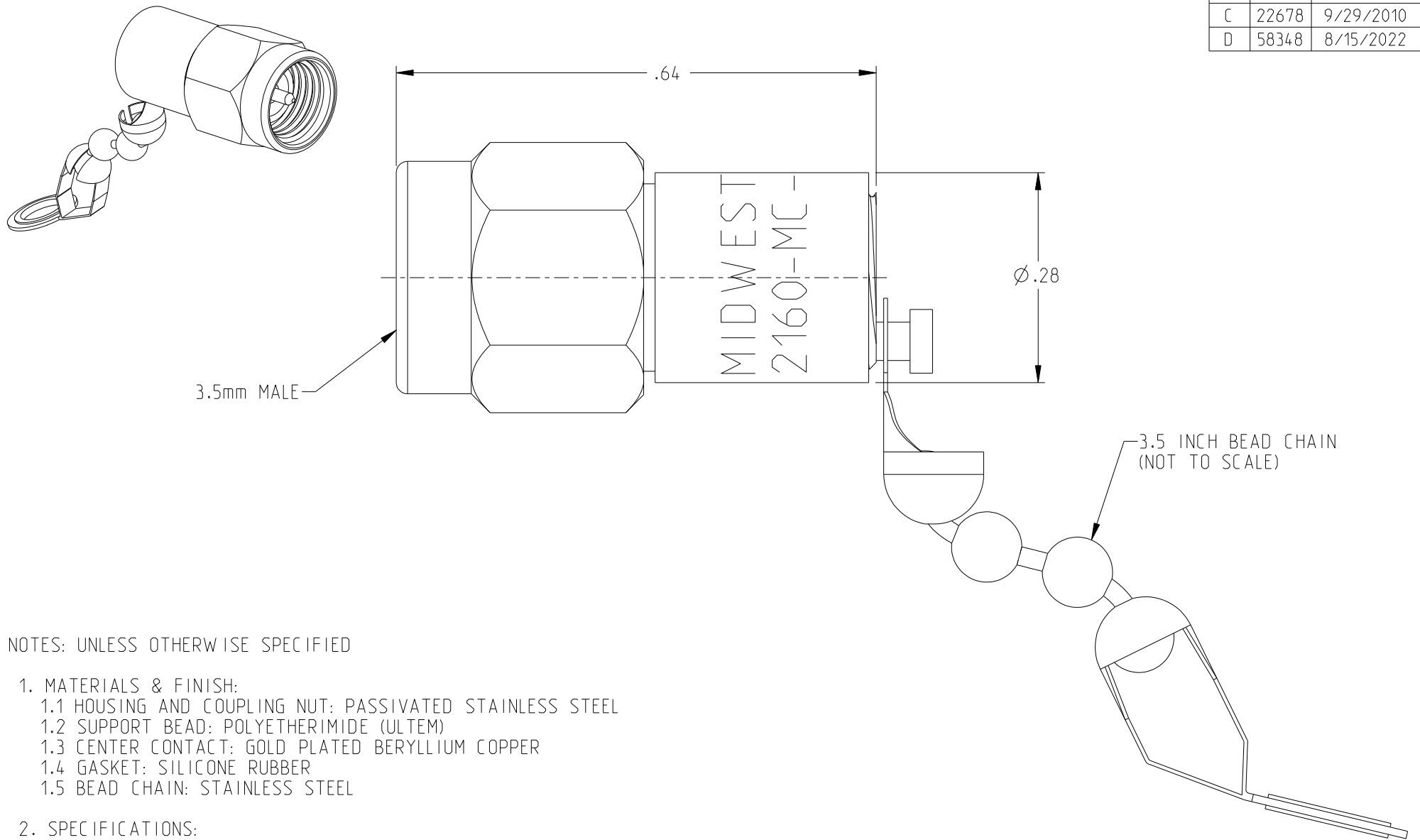


REV	ECO	DATE
B	11948	8/6/1992
C	22678	9/29/2010
D	58348	8/15/2022



NOTES: UNLESS OTHERWISE SPECIFIED

1. MATERIALS & FINISH:

- 1.1 HOUSING AND COUPLING NUT: PASSIVATED STAINLESS STEEL
- 1.2 SUPPORT BEAD: POLYETHERIMIDE (ULTEM)
- 1.3 CENTER CONTACT: GOLD PLATED BERYLLIUM COPPER
- 1.4 GASKET: SILICONE RUBBER
- 1.5 BEAD CHAIN: STAINLESS STEEL

2. SPECIFICATIONS:

- 2.1 FREQUENCY RANGE: DC TO 26.5 GHz
- 2.2 VSWR (MAX):
  - DC TO 18.0 GHz: 1.12:1
  - 18 TO 26.5 GHz: 1.18:1
- 2.3 INPUT POWER (MAX): 2 WATTS AT +25°C, DERATED LINEARLY TO 1 WATT AT +125°C
- 2.4 IMPEDANCE: 50 OHMS NOMINAL
- 2.5 TEMPERATURE RANGE: -65°C TO +125°C

<p>NOTICE: The information in this drawing is PROPRIETARY and must not be used without the permission of Cinch Connectivity Solutions. It may contain data whose export is restricted. Verify status prior to exporting.</p> <p>INTERPRET DRAWING IN ACCORDANCE WITH ASME Y14.5-2018</p>	Model No:	TRM-2160-MC-35M-02	MIDWEST MICROWAVE		
	RoHS2	<input checked="" type="checkbox"/>	Cage Code	34078	
	UNLESS OTHERWISE SPECIFIED UNITS: INCH		3RD ANGLE PROJECTION		
	ENGINEER:	J. KEREKES	Title:		TERMINATION 3.5MM MALE
Date:	8/18/2022	Drawing No.	TRM-2160-MC-35M-02-01	REV.	D
Size	A	DO NOT SCALE DRAWING	Workmanship Std	Sheet	1 OF 1