

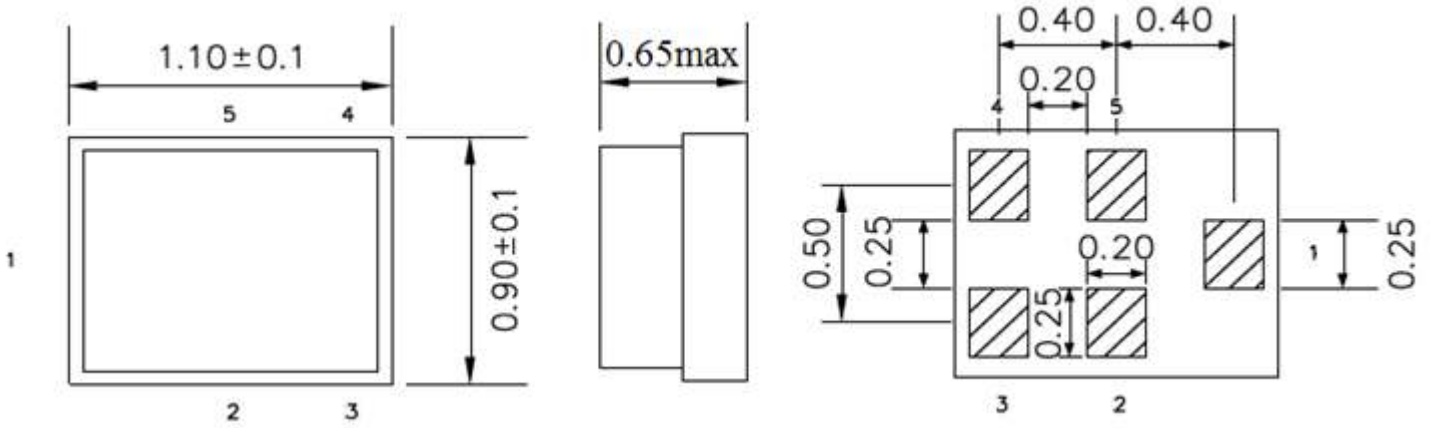
RSF-2140.000-60000-1109-TR-NS6

- ❖ Low-Loss RF Filter for Mobile Telephone WCDMA Band I systems, receive Path (Rx).
- ❖ Impedance Transform 50 Ω to 100 Ω .
- ❖ Unbalanced to Balanced Operation.
- ❖ Useable Pass Band 60 MHz.
- ❖ RoHS Compatible.

Electrical Specification

Parameters		Value	Unit
Insertion Loss, typ/max	2110 ~ 2170 MHz	1.7 / 2.5	dB
Amplitude Ripple, typ/max	2110 ~ 2170 MHz	0.6 / 1.6	dB
VSWR, typ/max	Input	2110 ~ 2170 MHz	1.8 / 2.2
	Output		1.7 / 2.2
Output Amplitude Balance, typ/max	2110 ~ 2170 MHz	$\pm 0.7 / \pm 1.0$	dB
Output Phase Balance, typ/max	2110 ~ 2170 MHz	$180 \pm 3 / 180 \pm 10$	$^{\circ}$
Attenuation, min/typ	DC ~ 1730 MHz	-35 / -40	dB
	1730 ~ 1790 MHz	-38 / -45	dB
	1920 ~ 1980 MHz	-43 / -48	dB
	1980 ~ 2025 MHz	-32 / -42	dB
	2025 ~ 2050 MHz	-20 / -33	dB
	2250 ~ 2400 MHz	-20 / -24	dB
	2400 ~ 2500 MHz	-25 / -34	dB
	2500 ~ 3000 MHz	-20 / -33	dB
	3000 ~ 4030 MHz	-22 / -50	dB
	4030 ~ 4150 MHz	-25 / -50	dB
4150 ~ 5950 MHz	-20 / -48	dB	
5950 ~ 6000 MHz	-20 / -50	dB	
DC Voltage		5	V
Input Power, max	@ 2000 h	15	dBm
ESD Voltage ESD (MM)		50	VDC
Sensitive Discharge Voltage ESD(HBM)		175	VDC
Terminating Source Impedance, unbalanced		50	Ω
Terminating Load Impedance, balanced		100 // 12	Ω // nH
Operating Temperature Range		-30 ~ +85	$^{\circ}\text{C}$
Storage Temperature Range		-40 ~ +85	$^{\circ}\text{C}$

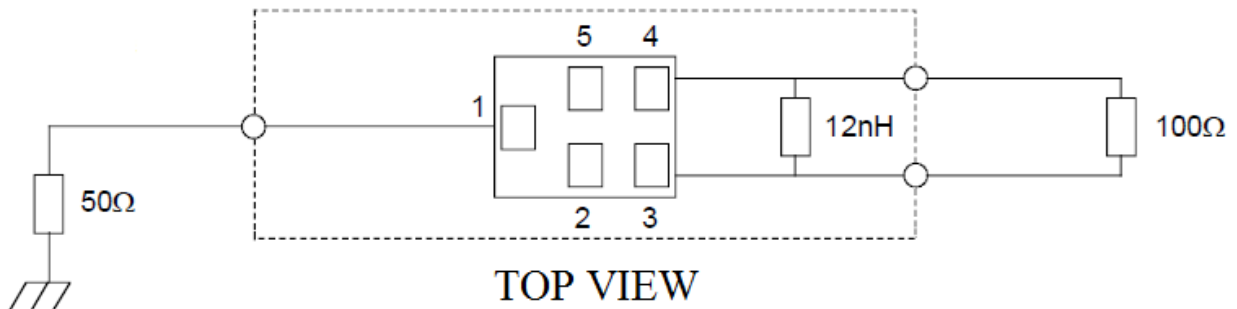
Dimensions



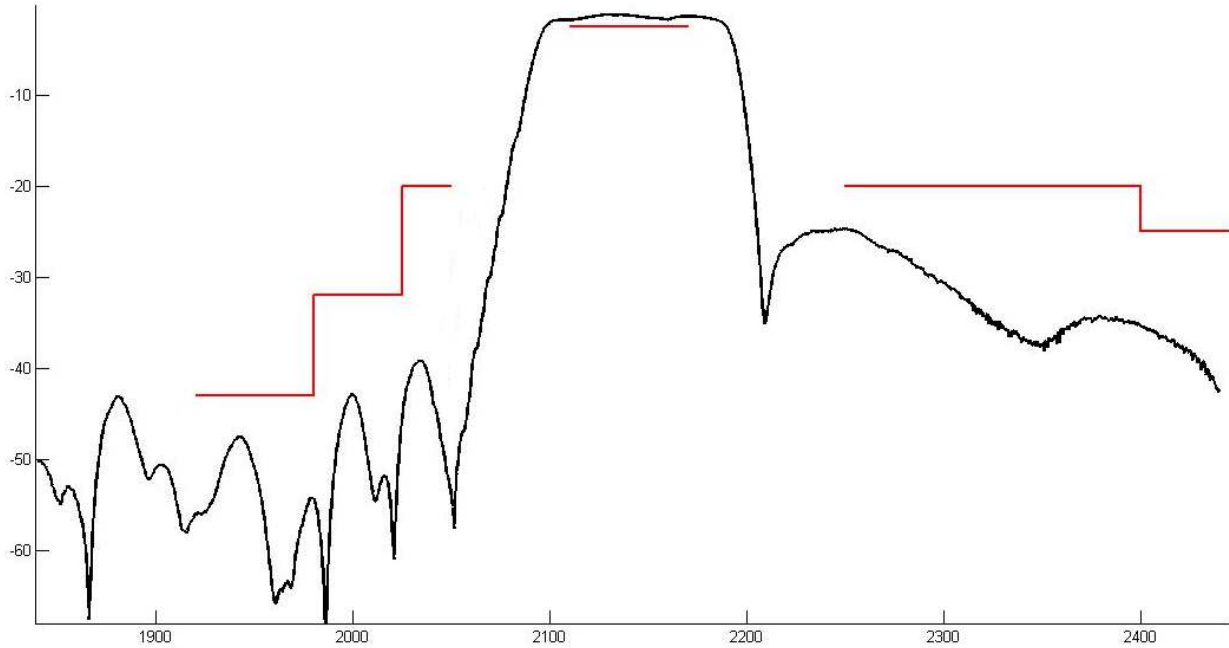
Unit: mm

PIN #	PIN NAME	DESCRIPTION
1	IN	Input
2	GND	Ground
3	OUT	Balanced Output
4	OUT	Balanced Output
5	GND	Ground

Test Circuit



Frequency Characteristics



Environmental

PARAMETER	VALUE
MOISTURE SENSITIVITY LEVEL	2
REACH – SVHC	Compliant
RoHS	Compliant

APPROVAL

DRAWN BY	AR, August 19, 2021
APPROVED BY	CP, August 19, 2021
REVISION	A, Initial Release

Raltron Electronics / RAMI Technology USA, LLC, including its affiliates, employees, agents and other persons acting on its behalf (collectively Raltron/RAMI Tech), disclaim any and all liability for any errors or inaccuracies contained in this data sheet. While Raltron/RAMI Tech has made every reasonable effort ensure the accuracy of all product information, specifications and data contained herein, Raltron/RAMI Tech does not guarantee that the information is accurate, reliable or current. The product information is provided only for reference purposes only and is subject to change, correction or revision, at any time without notice. Raltron/RAMI Tech does not assume any liability arising out of an application or use of any product described herein and disclaims any warranties expressed or implied. The user of products in such applications shall assume all risks of such use and will agree to hold Raltron/RAMI Tech, harmless against all damages.

Copyright © 2016, Raltron Electronics / RAMI Technology USA, LLC. All rights reserved. No part of this document may be reproduced in any form without the prior written permission of Raltron Electronics / RAMI Technology USA, LLC.