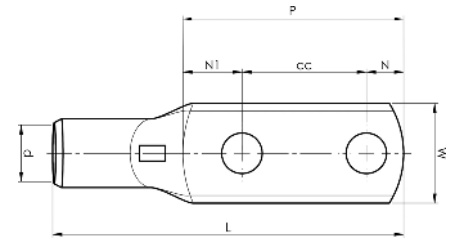




ELPRESS®

Product Datasheet



KRF tube terminals with two holes, 16 - 400 mm²

| mm ² | AWG | Name | Screw | W (mm) | d | N | N1 | P | cc | L | t | s | Tool | Die | Pcs/pack |
|-----------------|-----|--------------------|-------|--------|------|-----|------|----|----|-----|-----|----|-----------------------------|------|----------|
| 16 | 6 | KRF16-6X2-16 | M6x2 | 13 | 6 | 6,5 | 8,5 | 31 | 16 | 50 | 2,8 | 11 | PVL350, V600, DV1300, DV250 | 9 | 100 |
| 16 | 6 | KRF16-10X2-40 | M10x2 | 16 | 6 | 11 | 11 | 62 | 40 | 81 | 2,2 | 11 | PVL350, V600, DV1300, DV250 | 9 | 100 |
| 16 | 6 | KRF16-10X2-24-26 | M10x2 | 16 | 6 | 11 | 19 | 55 | 25 | 75 | 2,2 | 11 | PVL350, V600, DV1300, DV250 | 9 | 100 |
| 25 | 4 | KRF25-6X2-16 | M6x2 | 16 | 8 | 6,5 | 8,5 | 31 | 16 | 54 | 2,9 | 13 | PVL350, V600, DV1300, DV250 | 11 | 100 |
| 25 | 4 | KRF25-8X2-40 | M8x2 | 16 | 8 | 9,5 | 10,5 | 60 | 40 | 81 | 2,8 | 13 | PVL350, V600, DV1300, DV250 | 11 | 100 |
| 25 | 4 | KRF25-10X2-40 | M10x2 | 18 | 8 | 11 | 19 | 70 | 40 | 93 | 2,5 | 14 | PVL350, V600, DV1300, DV250 | 11 | 100 |
| 25 | 4 | KRF25-14X2-40 | M14x2 | 22 | 8 | 15 | 17 | 72 | 40 | 94 | 1,8 | 13 | PVL350, V600, DV1300, DV250 | 11 | 100 |
| 35 | 2 | KRF35-10X2-24-26 | M10x2 | 18 | 9 | 11 | 16 | 52 | 25 | 78 | 3,9 | 16 | PVL350, V600, DV1300, DV250 | 13 | 100 |
| 35 | 2 | KRF35-10X2-40 | M10x2 | 20 | 9 | 11 | 19 | 70 | 40 | 95 | 3,5 | 16 | PVL350, V600, DV1300, DV250 | 13 | 100 |
| 50 | 1/0 | KRF50-10X2-24-26 | M10x2 | 21 | 11 | 11 | 16 | 52 | 25 | 82 | 3,4 | 19 | PVL350, V600, DV1300, DV250 | 14,5 | 100 |
| 50 | 1/0 | KRF50-10X2-40 | M10x2 | 21 | 11 | 11 | 19 | 70 | 40 | 100 | 3,3 | 19 | PVL350, V600, DV1300, DV250 | 14,5 | 100 |
| 70 | 2/0 | KRF70-10X2-24-26 | M10x2 | 25 | 13 | 11 | 17 | 53 | 25 | 86 | 3,9 | 22 | PVL350, V600, DV1300, DV250 | 17 | 50 |
| 70 | 2/0 | KRF70-12X2-40 | M12x2 | 25 | 13 | 12 | 18 | 70 | 40 | 103 | 3,9 | 22 | PVL350, V600, DV1300, DV250 | 17 | 25 |
| 95 | 4/0 | KRF95-10X2-24-26 | M10x2 | 29 | 15 | 11 | 19 | 55 | 25 | 93 | 4,9 | 25 | V600, DV1300, DV250 | 20 | 25 |
| 95 | 4/0 | KRF95-12X2-40 | M12x2 | 29 | 15 | 12 | 18 | 70 | 40 | 107 | 4,9 | 25 | V600, DV1300, DV250 | 20 | 25 |
| 120 | 250 | KRF120-10X2-24-26 | M10x2 | 32 | 17 | 11 | 19 | 55 | 25 | 97 | 4,9 | 27 | V600, DV1300, DV250 | 22 | 25 |
| 120 | 250 | KRF120-12X2-40 | M12x2 | 32 | 17 | 12 | 19 | 71 | 40 | 113 | 4,9 | 27 | V600, DV1300, DV250 | 22 | 25 |
| 150 | 300 | KRF150-10X2-24-26 | M10x2 | 36 | 19 | 11 | 19 | 55 | 25 | 104 | 5,9 | 32 | V600, DV1300, DV250 | 25 | 25 |
| 150 | 300 | KRF150-12X2-40 | M12x2 | 36 | 19 | 12 | 19 | 71 | 40 | 120 | 5,9 | 32 | V600, DV1300, DV250 | 25 | 20 |
| 185 | 350 | KRF185-10X2-24-26 | M10x2 | 39 | 21 | 11 | 21 | 57 | 25 | 111 | 5,9 | 37 | DV1300, DV250 | 27 | 20 |
| 185 | 350 | KRF185-12X2-40 | M12x2 | 39 | 21 | 12 | 20 | 72 | 40 | 126 | 5,9 | 37 | DV1300, DV250 | 27 | 20 |
| 240 | 500 | KRF240A-10X2-24-26 | M10x2 | 42 | 22,5 | 11 | 22 | 58 | 25 | 115 | 6,4 | 37 | DV1300, DV250 | 30 | 10 |
| 240 | 500 | KRF240A-12X2-40 | M12x2 | 42 | 22,5 | 12 | 21 | 73 | 40 | 130 | 6,4 | 37 | DV1300, DV250 | 30 | 10 |
| 300 | 600 | KRF300A-12X2-40 | M12x2 | 46 | 24,5 | 12 | 22 | 74 | 40 | 133 | 6,8 | 40 | DV1300, DV250 | 32 | 5 |
| 400 | 750 | KRF400A-12X2-40 | M12x2 | 56 | 30 | 12 | 23 | 75 | 40 | 145 | 7,8 | 52 | DV1300, DV250 | 38 | 1 |

t = palm thickness, s = strip length



ELPRESS®