

PART NUMBER	REV	TERMINATOR	FEED TYPE	DESCRIPTION
1528592-1	A	LEADMAKER	MECH POST FEED	CUTS CARRIER
1528592-2	A	BENCH	MECH PRE FEED	CUTS CARRIER
1528592-6	A	LEADMAKER	MECH POST FEED	CONTINUOUS CARRIER
7-1528592-1	A	LEADMAKER	MECH POST FEED	-1 AND SPARE PARTS
7-1528592-2	A	BENCH	MECH PRE FEED	-2 AND SPARE PARTS
7-1528592-6	A	LEADMAKER	MECH POST FEED	-6 AND SPARE PARTS
7-1528592-7	A	-	-	SPARE PARTS KIT

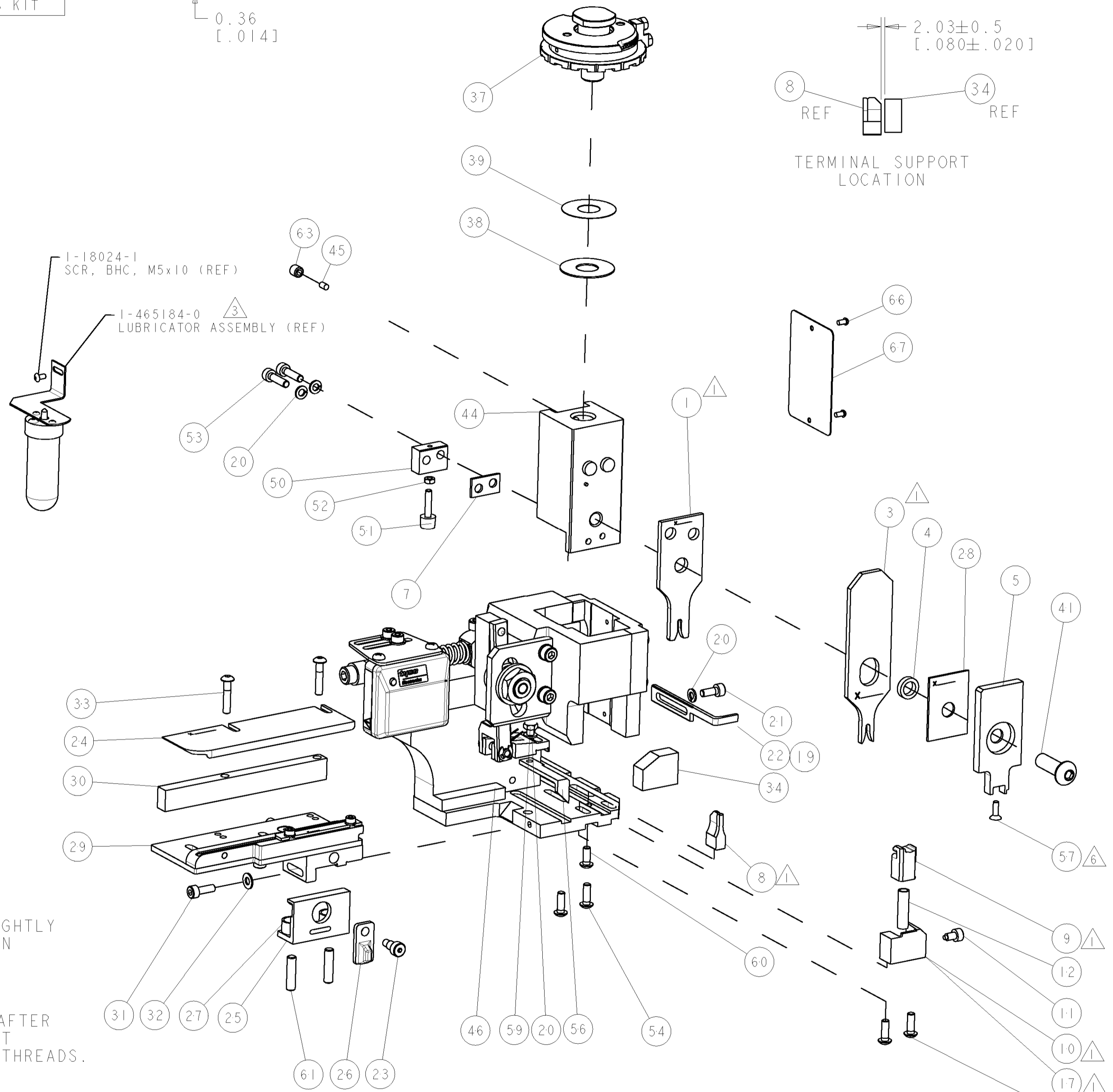
CRIMP	SIZE	TYPE	RANGE
WIRE	1.57 [1.062 IN]	F	0.22-0.35mm ²
INSUL	2.54 [1.00 IN]	O	1.15-1.40 [1.045-.055 IN] ⁴

WIRE STRIP LENGTH	APPL INSTRUCTIONS
3.90-4.70 [1.54-.185 IN]	408-8322 & 408-8490 ⁴

TERMINAL APPL SPEC	FEED
114-20121 ⁶	12.50 [4.92 IN]

PIN	SOCKET	SEAL
1437709-6	1437709-3	1-1437713-1
1-1437709-1	1437709-9	-
-	1-1437709-4	-

WIRE SIZE	CRIMP HEIGHT	REF SETTING
0.35 mm ²	1.03 ±0.03 [1.041 ±.001 IN]	B 9
0.30 mm ²	1.00 ±0.03 [1.039 ±.001 IN]	C 3
0.22 mm ²	0.96 ±0.03 [1.038 ±.001 IN]	C 6

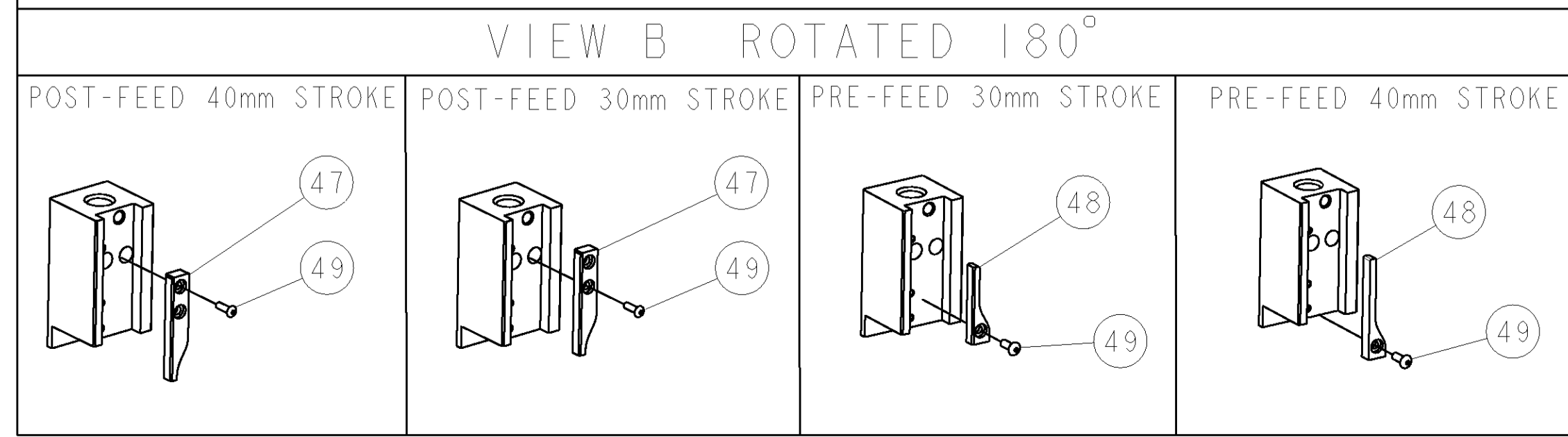


LOC	DIST	REV	DESCRIPTION	DATE	BY	APPD
A	66		SEE ECO-06-008044	05APR2006	LJL	MC

QTY	UNIT	DESCRIPTION	ITEM NO
-	-	-	73
-	-	-	72
-	-	-	71
-	-	-	70
-	-	-	69
-	-	-	68
-	-	-	67
-	-	-	66
-	-	-	65
-	-	-	64
-	-	-	63
-	-	-	62
-	-	-	61
-	-	-	60
-	-	-	59
-	-	-	58
-	-	-	57
-	-	-	56
-	-	-	55
-	-	-	54
-	-	-	53
-	-	-	52
-	-	-	51
-	-	-	50
-	-	-	49
-	-	-	48
-	-	-	47
-	-	-	46
-	-	-	45
-	-	-	44
-	-	-	43
-	-	-	42
-	-	-	41
-	-	-	40
-	-	-	39
-	-	-	38
-	-	-	37
-	-	-	36
-	-	-	35
-	-	-	34
-	-	-	33
-	-	-	32
-	-	-	31
-	-	-	30
-	-	-	29
-	-	-	28
-	-	-	27
-	-	-	26
-	-	-	25
-	-	-	24
-	-	-	23
-	-	-	22
-	-	-	21
-	-	-	20
-	-	-	19
-	-	-	18
-	-	-	17
-	-	-	16
-	-	-	15
-	-	-	14
-	-	-	13
-	-	-	12
-	-	-	11
-	-	-	10
-	-	-	9
-	-	-	8
-	-	-	7
-	-	-	6
-	-	-	5
-	-	-	4
-	-	-	3
-	-	-	2
-	-	-	1

- ¹ RECOMMENDED SPARE PARTS
- 2. GREASE RAM, CAM, CAM FOLLOWER AND FEED ROD LIGHTLY
- 3. LUBRICATE DAILY PER THE APPLICATOR INSTRUCTION SHEET SUPPLIED WITH THE APPLICATOR
- ⁴ THIS APPLICATOR APPLIES TERMINAL WITH A SEAL.
- ⁵ APPLY TORQ-SEAL IN ALLEN SOCKET TO FILL HOLE AFTER FLAT HD HAS BEEN ADJUSTED TO CORRECT HEIGHT AT QUALIFICATION. APPLY #1-23419-5 LOC-TITE TO THREADS.
- ⁶ ACHIEVABLE TENSILE VALUE FOR 0.30mm² = 67N.
ACHIEVABLE TENSILE VALUE FOR 0.22mm² = 49N.

* WARNING
ON INSTALLATION, SET WIRE DISC TO LARGEST WIRE SIZE SETTING. USE OF SETTINGS BELOW MIN. REQUIRED CRIMP HEIGHT SETTING WILL CAUSE DAMAGE TO CRIMP TOOLING.



QTY	UNIT	DESCRIPTION	ITEM NO						
-	-	-	83						
-	-	-	82						
-	-	-	81						
-	-	-	80						
-	-	-	79						
-	-	-	78						
-	-	-	77						
-	-	-	76						
-	-	-	75						
-	-	-	74						
-77	-76	-72	-71	-6	-2	-1	PART NO	DESCRIPTION	ITEM NO

DIMENSIONS: mm [IN]	TOLERANCES UNLESS OTHERWISE SPECIFIED: 0 PLC ± 1 PLC ± 2 PLC ± 3 PLC ± 4 PLC ± ANGLES ±	DWG: 05-Apr-06 CHK: L LOFTHOUSE APVD: M CLIFFORD PRODUCT SPEC: 05-Apr-06 APPLICATION SPEC: See Table MATERIAL: - FINISH: -	tyco Tyco Electronics Harrisburg, PA 17105-3608 FINE ADJUST SIDE FEED HDI APPLICATOR SIZE: A1 CAGE CODE: 00779 DRAWING NO: C-1528592 SCALE: 3:5 SHEET: 1 OF 1 REV: A
------------------------	---	--	---