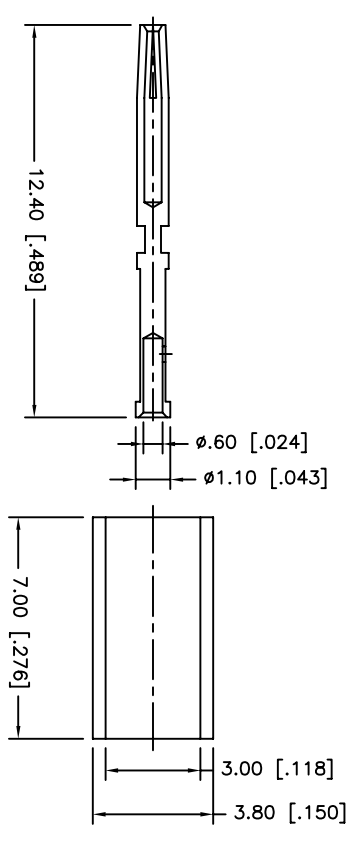
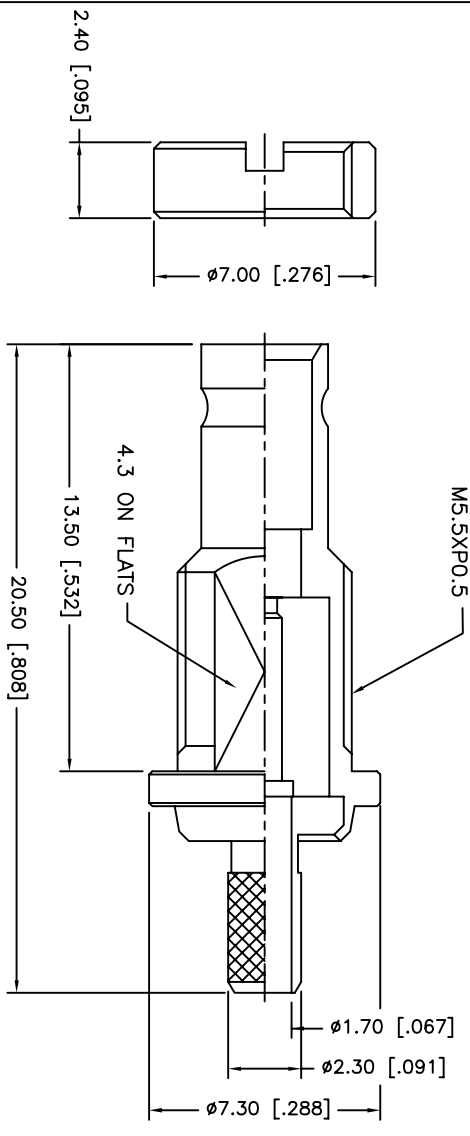
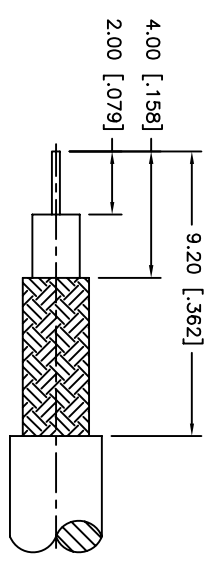
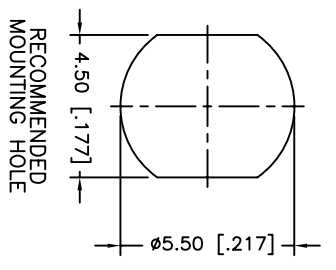


REV.	DATE	ECR NO.	DESCRIPTION
NC	09/04/09	XXXXXX	INITIAL RELEASE



1. CRIMPED FERRULE
HEX CRIMP SIZE .128"
2. SOLDER CENTER CONTACT

QTY	FINISH	MATERIAL	DESCRIPTION
1	GOLD	BRASS	BODY
1	NATURAL	PTFE	INSULATOR
1	GOLD	BER. COPPER	CONTACT PIN
1	NICKEL	BRASS	BARREL
1	NICKEL	BRASS	HEX NUT
1	NICKEL	COPPER	FERRULE

APPROVALS	DATE
DRAWN CW	09/04/09
CHECKED	
ISSUED	
SHEET 1 OF 1	

UNLESS OTHERWISE SPECIFIED DIMENSIONS ARE IN INCHES AND FOR CUSTOMER REFERENCE ONLY.
UNLESS OTHERWISE SPECIFIED TOLERANCES FOR MILLIMETERS ARE: 0.5 - 8mm ± 0.20mm 8 - 30mm ± 0.40mm 30 - 120mm ± 0.50mm
UNLESS OTHERWISE SPECIFIED TOLERANCES FOR INCHES ARE: .020 - .315 = ± 0.007" .315 - 1.180 = ± 0.015" 1.180 - 4.724 = ± 0.020"

DO NOT SCALE DRAWING

APPROVALS	DATE
DRAWN CW	09/04/09

PART DESCRIPTION	PART NO.
1.0/2.3 CRIMP JACK (FOR RG-179/U, 187A/U)	282102-75

CDW FILE	DWG. NO.	REV.	NC	SIZE	SCALE
C:/CONNEX/282102-75.DWG	282102-75.DWG	NC		A	NA

Amphenol Connex