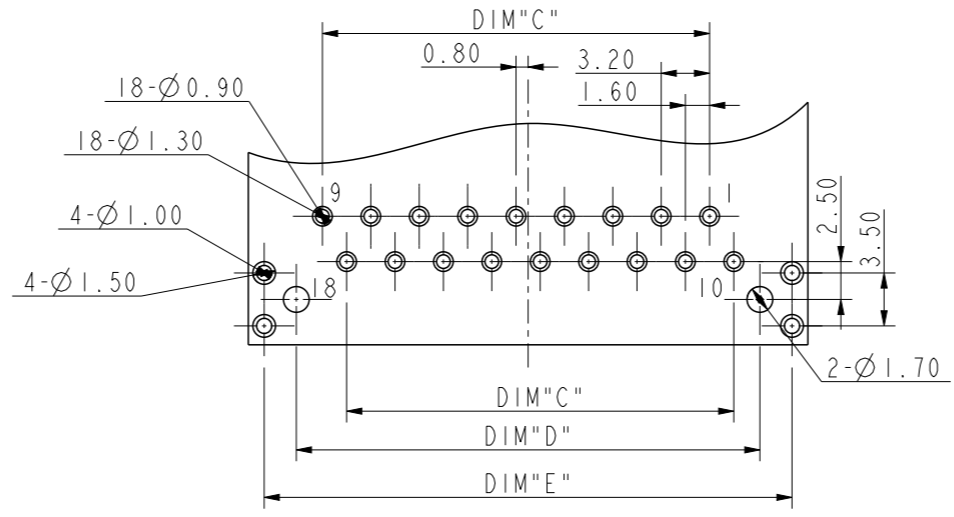
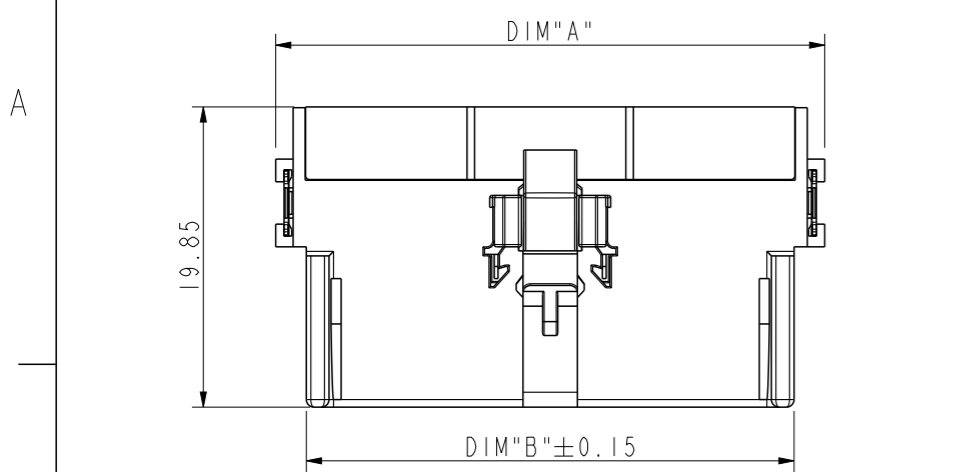


PRODUCT STYLE
RIGHT ANGLE

PIN NUMBER	DIM "A"	DIM "B"	DIM "C"	DIM "D"	DIM "E"
20 Pin	39.50	35.45	28.80	33.85	38.10
18 Pin	36.30	32.25	25.60	30.65	34.90
~	~	~	~	~	~
14 Pin	29.90	25.85	19.20	24.25	28.50



SCALE 2:1
LAYOUT RECOMMENDED
TOLERANCE: ±0.05

PART NUMBER SCHEME
10164520-XXXXXXLF

CONNECTOR STYLE
R: RIGHT ANGLE.

PIN NUMBER
18- 18 PIN
...

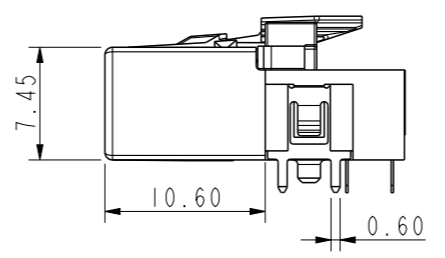
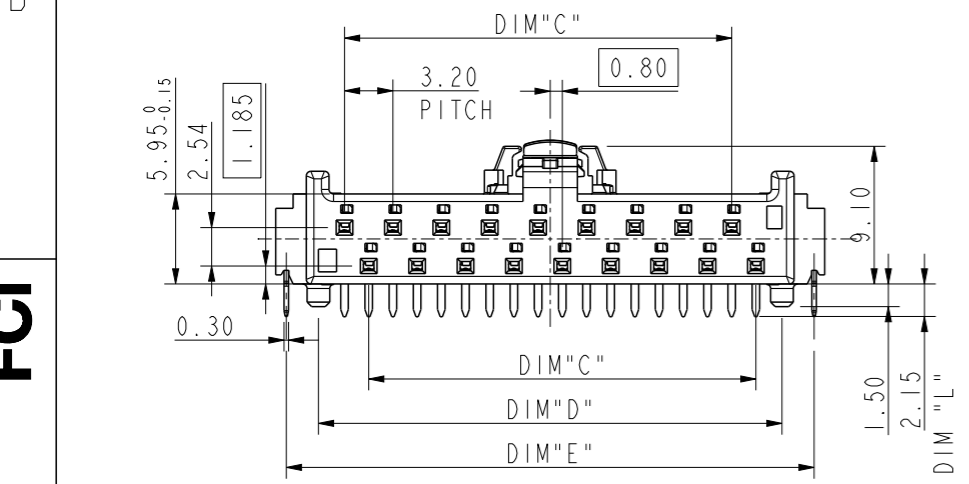
PACKING TYPE
0: TRAY
1: CARRIER TAPE

LEAD FREE

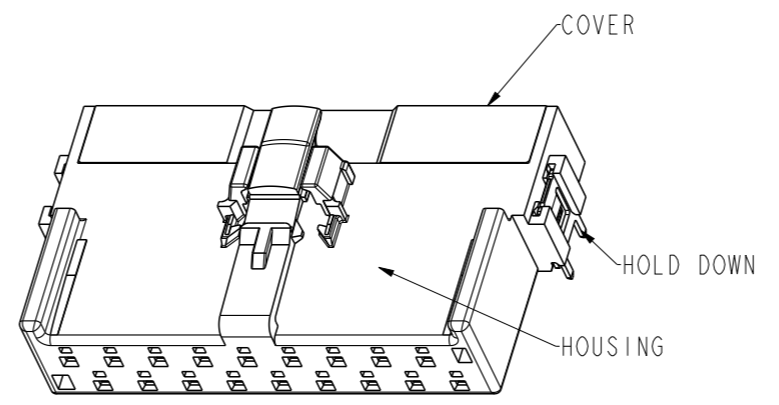
COVER OPTIONAL
0: WITHOUT
1: WITH

HOLD DOWN OPTION AND DIM "L"
0: THT, L=2.15 NO HOLD DOWN
1: THT, L=2.15 WITH HOLD DOWN

PLATING
0: TIN 40U"

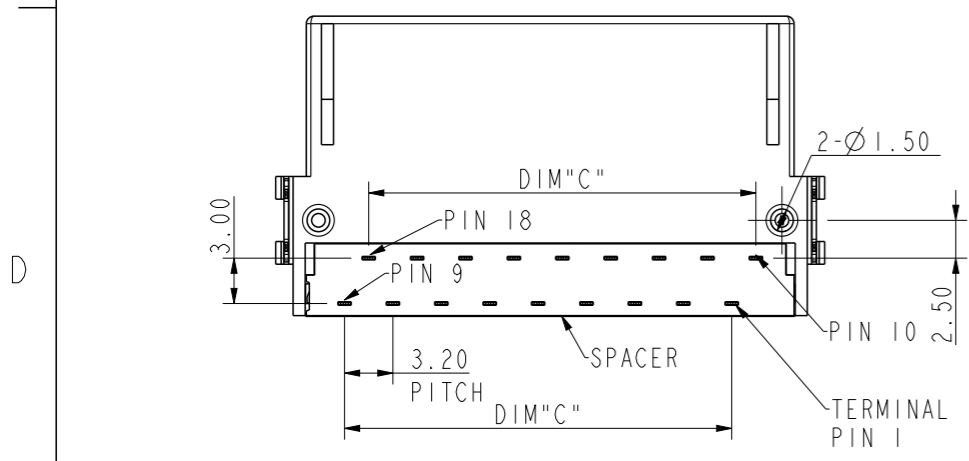


SCALE 2:1



SCALE 2:1

- NOTES:
- MATERIAL:
 - 1.1 HOUSING : THERMOPLASTIC
 - 1.2 TERMINAL AND HOLD DOWN: COPPER ALLOY
 - PLATING: 1-3µm NI UNDER PLATING;
 - 2.1 CONTACT AREA: ACCORDING TO PART NUMBER;
 - 2.2 SOLDER TAIL: TIN PLATING.
 - PRODUCT SPEC GX-12-XXXX
 - THIS HOUSING WILL WITHSTAND EXPOSURE TO 260°C PEAK TEMPERATURE FOR 20 SECONDS IN A IR REFLOW SOLDERING APPLICATION.
 - THIS PRODUCT MEETS EUROPEAN UNION DIRECTIVES AND OTHER COUNTRY REGULATIONS AS DESCRIBED IN GS-47-0004.



spec ref	dr	Li-Qing Lei	2022/01/07	projection	mm	size	A3	scale	1:1
tolerance std	eng	Ward Wang	2022/03/16			ecn no	ELX-N-44148-1	rel level	Released
TOLERANCES UNLESS OTHERWISE SPECIFIED			chr						
surface	linear	0.X	±0.5		RECEPTACLE RA FlexLock 3.20mm Pitch Connector	dwg no	10158558	rev	B
		0.XX	±0.25						
		0.XXX	±0.10						
	angular	0°	±2°	amphenol-icc.com	cat. no.	Product - Customer Drw	sheet 1 of 1		

Creo File:ELX-WC-A3C.REV F.2020-12-21

Amphenol FCI

© 2020 Amphenol Corporation