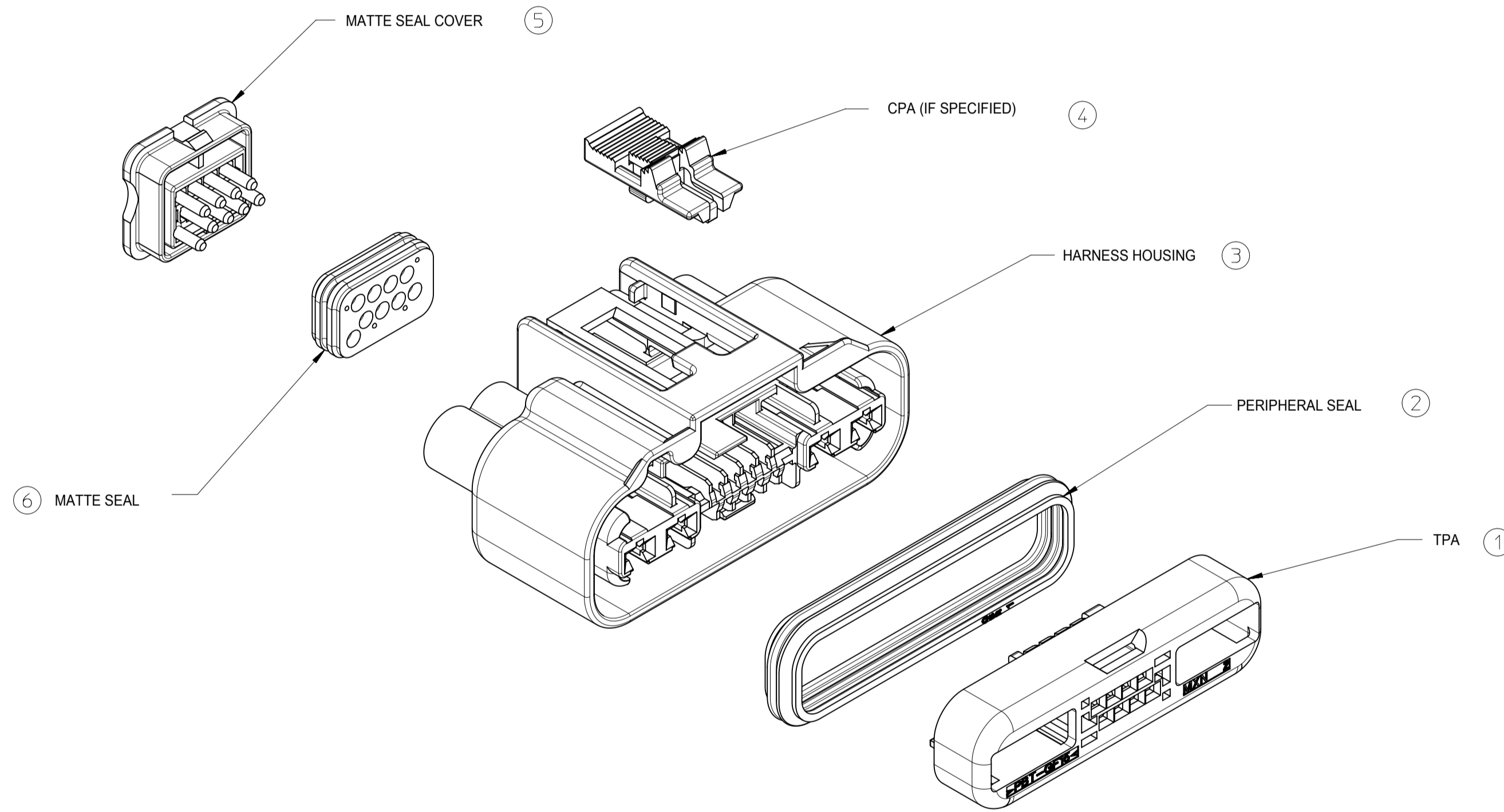
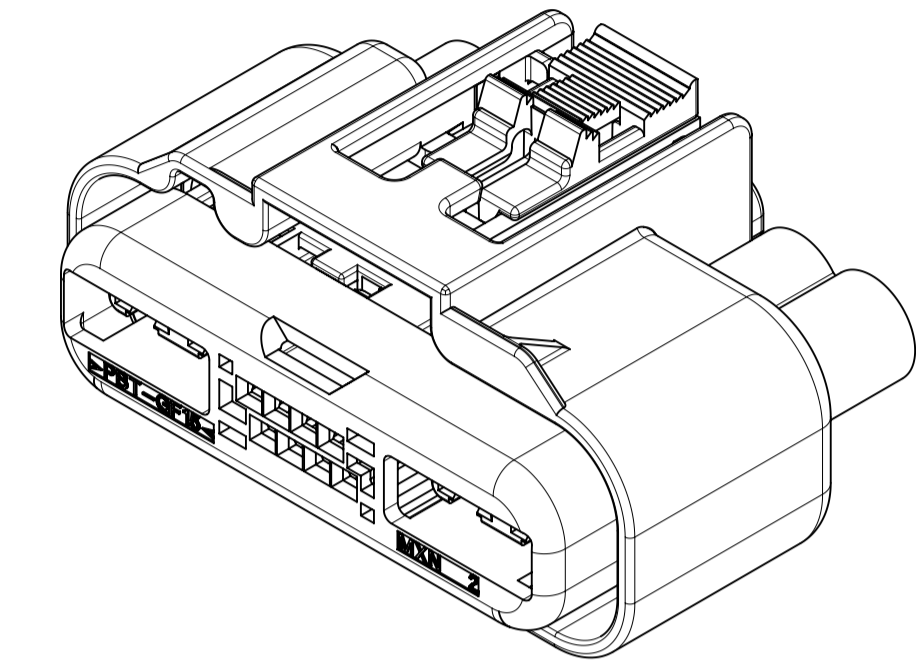


TABLE OF CONTENTS	
SHEET NO.	SHEET DESCRIPTION
1	NOTES
2	FIN ASSEMBLY
3	BOM
4	HEADER HOUSING DIMENSION
5	HEADER ASSEMBLY DIMENSION

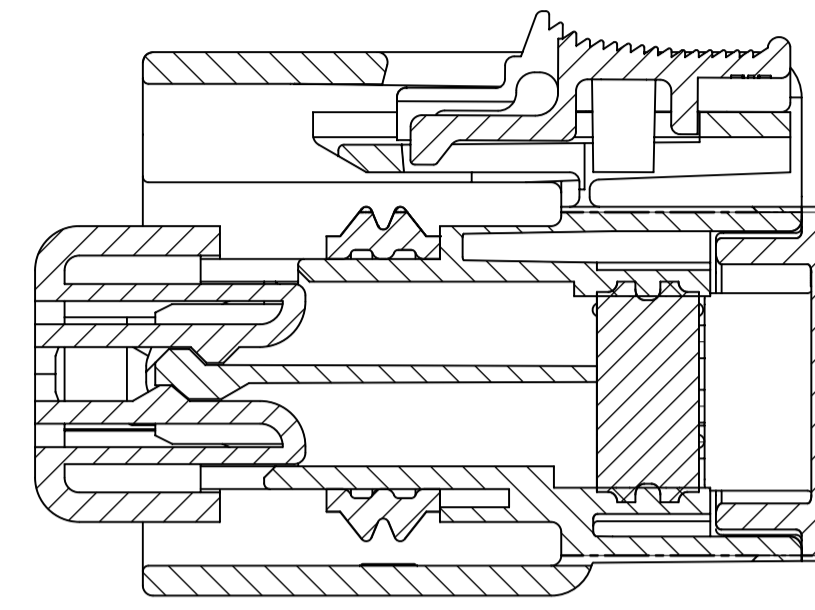
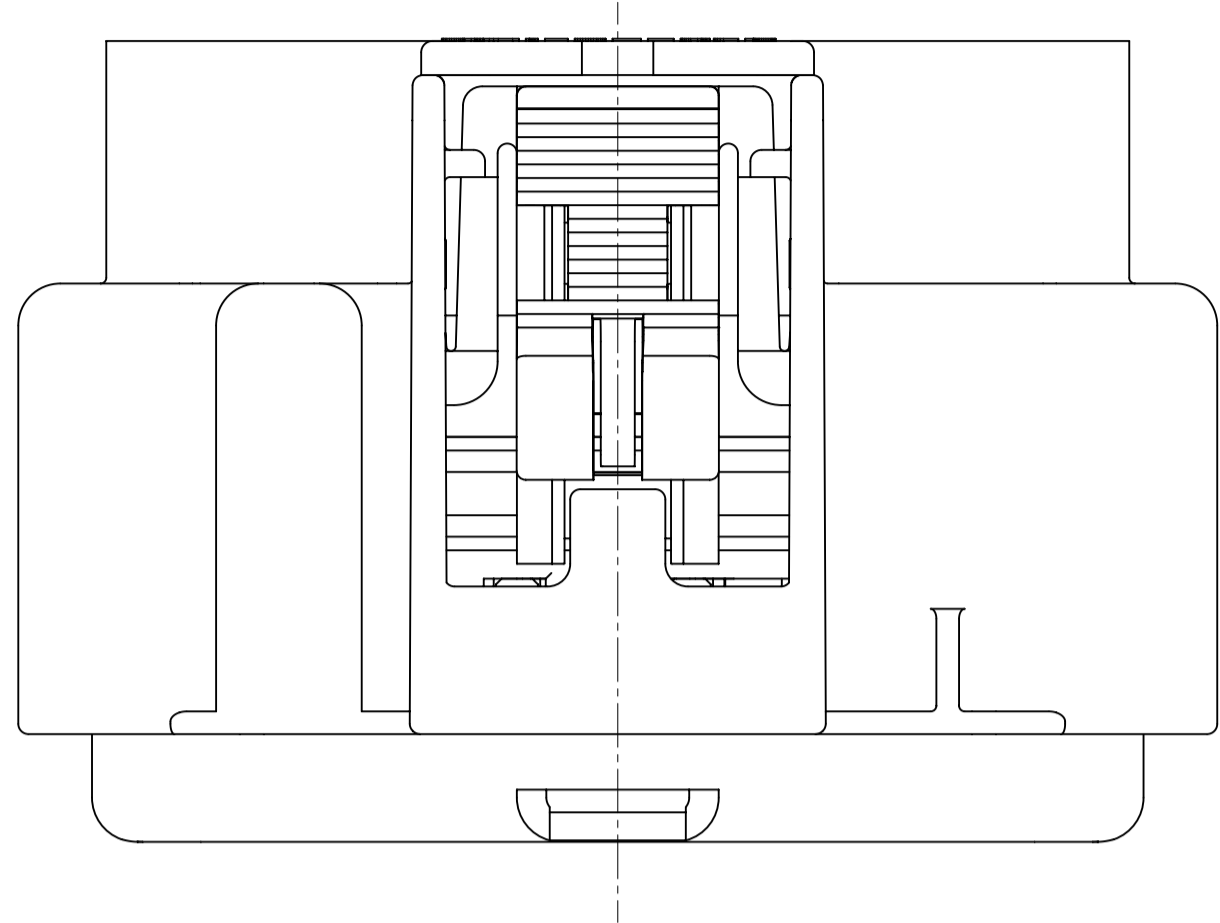


- NOTE:
- CONNECTOR TO BE SHIPPED WITH TPA IN PRE-LOAD POSITION AS SHOWN IN SECTION A-A.
 - DATE CODE DESCRIPTION:
 -1st DIGIT: LAST DIGIT OF CALENDAR YEAR, (EXAMPLE: 2000 = "0")
 -2nd THROUGH 4th DIGIT: "DAY#" OF THE CALENDAR YEAR, (EXAMPLE: FEB. 3rd = "034")
 SERIAL NUMBER DESCRIPTION:
 -STARTS AT "00001" AND IS RESET FOR EACH NEW "DAY#".
 PART NUMBER:
 -SEE TABLE ON SHEET 3.
 - ALL DIMENSIONS SHOWN ARE FUNCTIONAL. DIMENSIONS NOT SHOWN CAN BE OBTAINED FROM THE ASSOCIATED MODEL.
 - TEST SUMMARY DOCUMENT: 310340001
 - TERMINAL TO BE USED FOR THIS SYSTEM, SEE TERMINAL TABLE ON SHEET 3

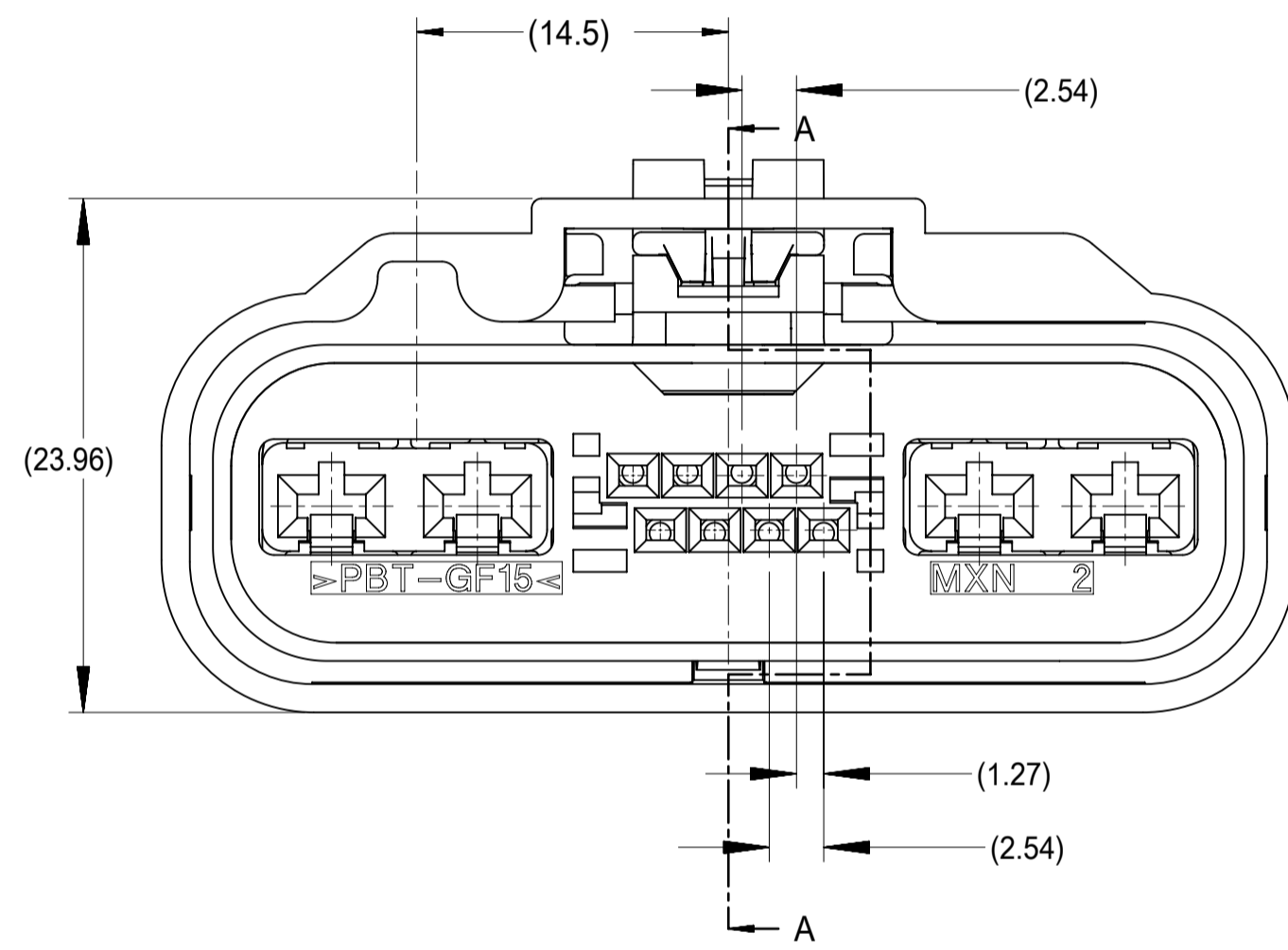
ITEM NO	DESCRIPTION	MATERIAL	COLOR
6	MATTE SEAL	SILICONE RUBBER	DARK BLUE
5	MATTE SEAL COVER	PBT GF15	BLACK
4	CPA	PPE/PA GF10	NATURAL
3	HARNESS HOUSING	SPS GF30	BLACK
2	PERIPHERAL SEAL	SILICONE RUBBER	LT. BLUE
1	TPA	PBT GF15	NATURAL

D	ADD 31034-6025	ER 608393
C	ADD 31034-5021	ER 602910
B	ADD 31034-6024	10889293
A1	UPDATE DRAWING ON SHEET 5	10868575
A	INITIAL RELEASE	10859355
REV	REV DESCRIPTION	ECN SAP#

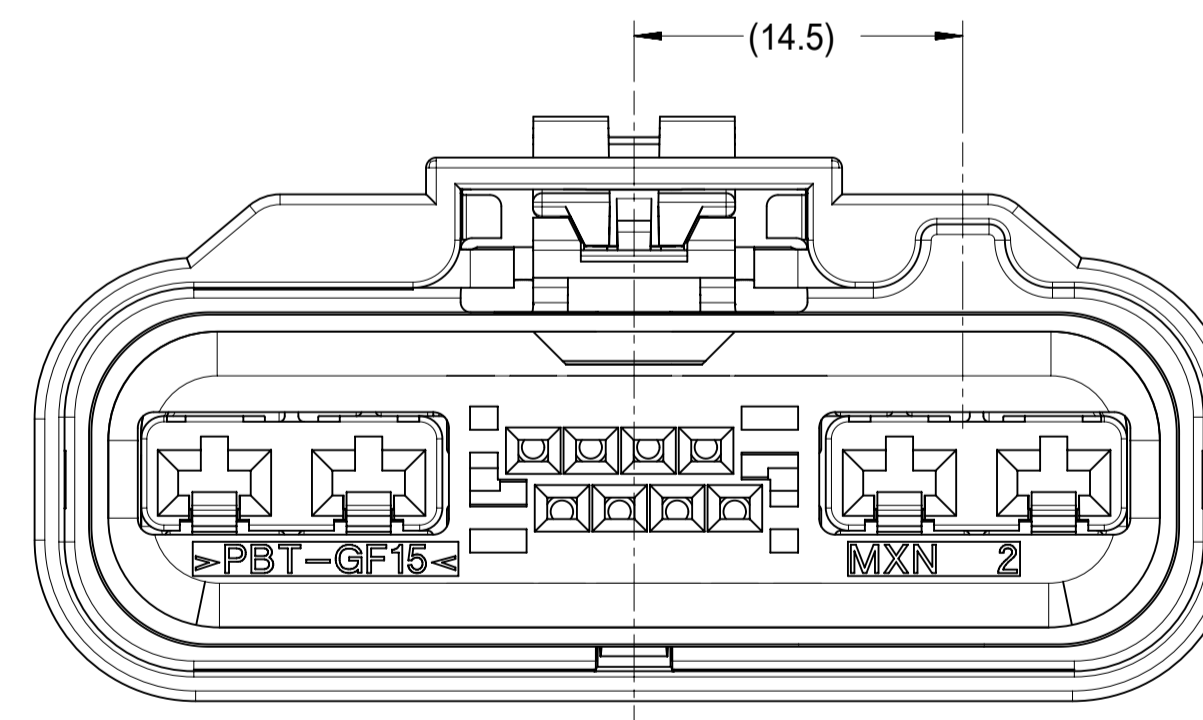
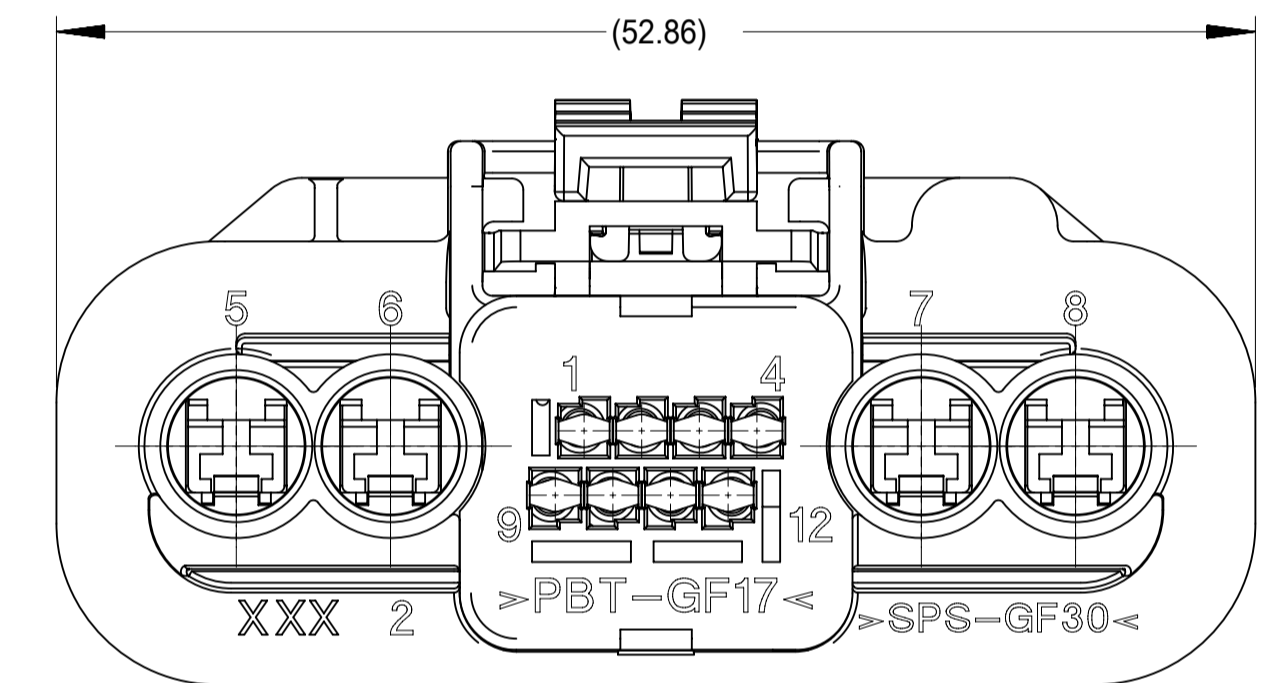
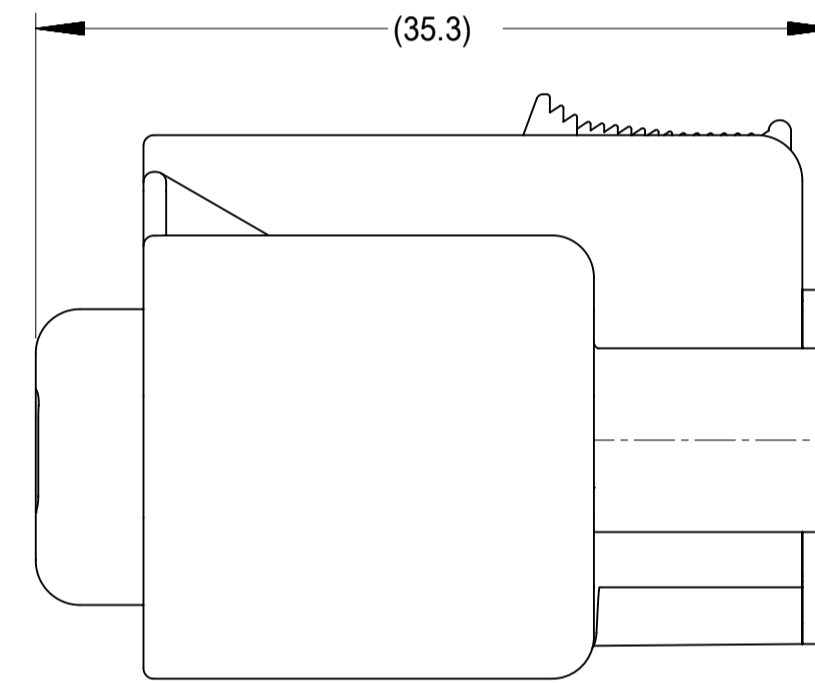
QUALITY SYMBOLS		THIS DRAWING CONTAINS INFORMATION THAT IS PROPRIETARY TO MOLEX ELECTRONIC TECHNOLOGIES, LLC AND SHOULD NOT BE USED WITHOUT WRITTEN PERMISSION		DIMENSION UNITS		SCALE			
FA = 0		EC NO: 608393 DRWN: HKLIANG CHKD: JDENG02 REV APPR: JDENG02	2018/12/04 2018/12/07 2018/12/07	GENERAL TOLERANCES (UNLESS SPECIFIED)	mm	1:1			
FE = 0				ANGULAR TOL ± 0.5 °	DRWN BY	DATE		PXU25	2017/08/09
FF = 0				4 PLACES ±	CHK'D BY	DATE		GLI04	2017/09/05
FD = 0				3 PLACES ±	APPR BY	DATE		JDENG02	2017/09/19
FC = 0				2 PLACES ± 0.13	DRAWING SIZE	THIRD ANGLE PROJECTION		A1	
FB = 0				1 PLACE ± 0.25	DRAFT WHERE APPLICABLE MUST REMAIN WITHIN DIMENSIONS				
FC = 0		0 PLACES ±							
FA = 0									
FE = 0									
FF = 0									
FD = 0									
FC = 0									
FB = 0									
FA = 0									
FE = 0									
FF = 0									
FD = 0									
FC = 0									
FB = 0									
FA = 0									
FE = 0									
FF = 0									
FD = 0									
FC = 0									
FB = 0									
FA = 0									
FE = 0									
FF = 0									
FD = 0									
FC = 0									
FB = 0									
FA = 0									
FE = 0									
FF = 0									
FD = 0									
FC = 0									
FB = 0									
FA = 0									
FE = 0									
FF = 0									
FD = 0									
FC = 0									
FB = 0									
FA = 0									
FE = 0									
FF = 0									
FD = 0									
FC = 0									
FB = 0									
FA = 0									
FE = 0									
FF = 0									
FD = 0									
FC = 0									
FB = 0									
FA = 0									
FE = 0									
FF = 0									
FD = 0									
FC = 0									
FB = 0									
FA = 0									
FE = 0									
FF = 0									
FD = 0									
FC = 0									
FB = 0									
FA = 0									
FE = 0									
FF = 0									
FD = 0									
FC = 0									
FB = 0									
FA = 0									
FE = 0									
FF = 0									
FD = 0									
FC = 0									
FB = 0									
FA = 0									
FE = 0									
FF = 0									
FD = 0									
FC = 0									
FB = 0									
FA = 0									
FE = 0									
FF = 0									
FD = 0									
FC = 0									
FB = 0									
FA = 0									
FE = 0									
FF = 0									
FD = 0									
FC = 0									
FB = 0									
FA = 0									
FE = 0									
FF = 0									
FD = 0									
FC = 0									
FB = 0									
FA = 0									
FE = 0									
FF = 0									
FD = 0									
FC = 0									
FB = 0									
FA = 0									
FE = 0									
FF = 0									
FD = 0									
FC = 0									
FB = 0									
FA = 0									
FE = 0									
FF = 0									
FD = 0									
FC = 0									
FB = 0									
FA = 0									
FE = 0									
FF = 0									
FD = 0									
FC = 0									
FB = 0									
FA = 0									
FE = 0									
FF = 0									
FD = 0									
FC = 0									
FB = 0									
FA = 0									
FE = 0									
FF = 0									
FD = 0									
FC = 0									
FB = 0									
FA = 0									
FE = 0									
FF = 0									
FD = 0									
FC = 0									
FB = 0									
FA = 0									
FE = 0									
FF = 0									
FD = 0									
FC = 0									
FB = 0									
FA = 0									
FE = 0									
FF = 0									
FD = 0									
FC = 0									
FB = 0									
FA = 0									
FE = 0									
FF = 0									
FD = 0									
FC = 0									
FB = 0									
FA = 0									
FE = 0									
FF = 0									
FD = 0									
FC = 0									
FB = 0									
FA = 0									
FE = 0									
FF = 0									
FD = 0									
FC = 0									
FB = 0									
FA = 0									
FE = 0									
FF = 0									
FD = 0									
FC = 0									
FB = 0									
FA = 0									
FE = 0									
FF = 0									
FD = 0									
FC = 0									
FB = 0									
FA = 0									
FE = 0									
FF = 0									
FD = 0									
FC = 0									
FB = 0									
FA = 0									
FE = 0									
FF = 0									
FD = 0									
FC = 0									
FB = 0									
FA = 0									
FE = 0									
FF = 0									
FD = 0									
FC = 0									
FB = 0									
FA = 0									
FE =									



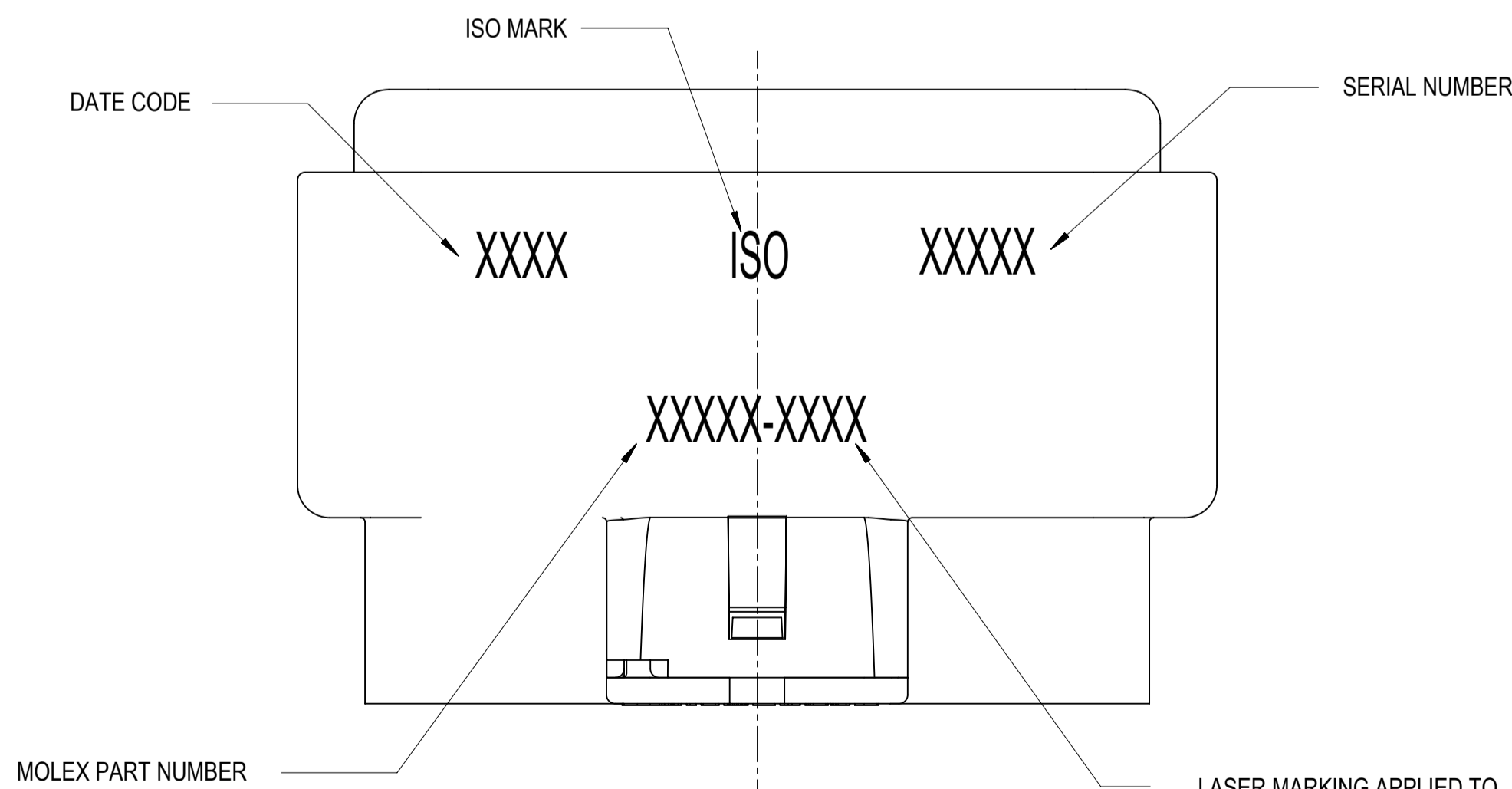
SECTION A-A



POLARIZATION A



POLARIZATION B



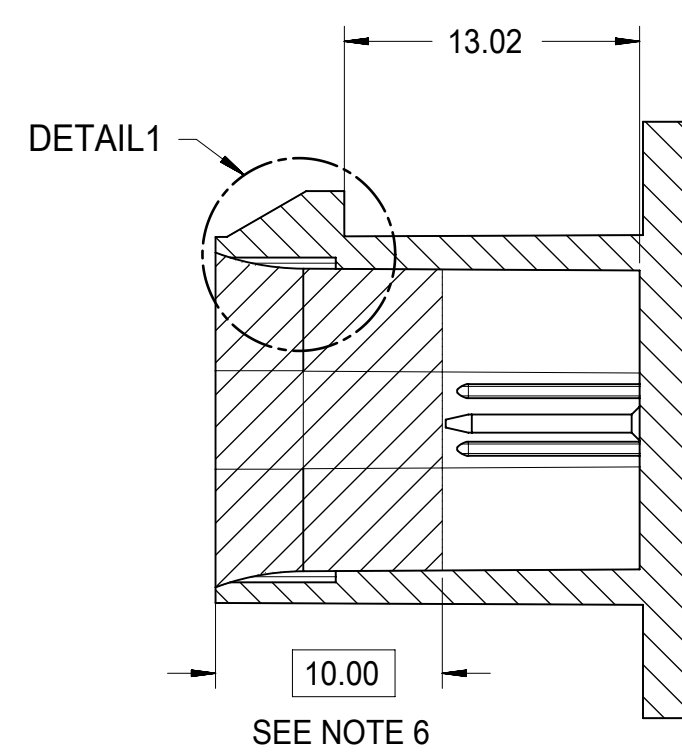
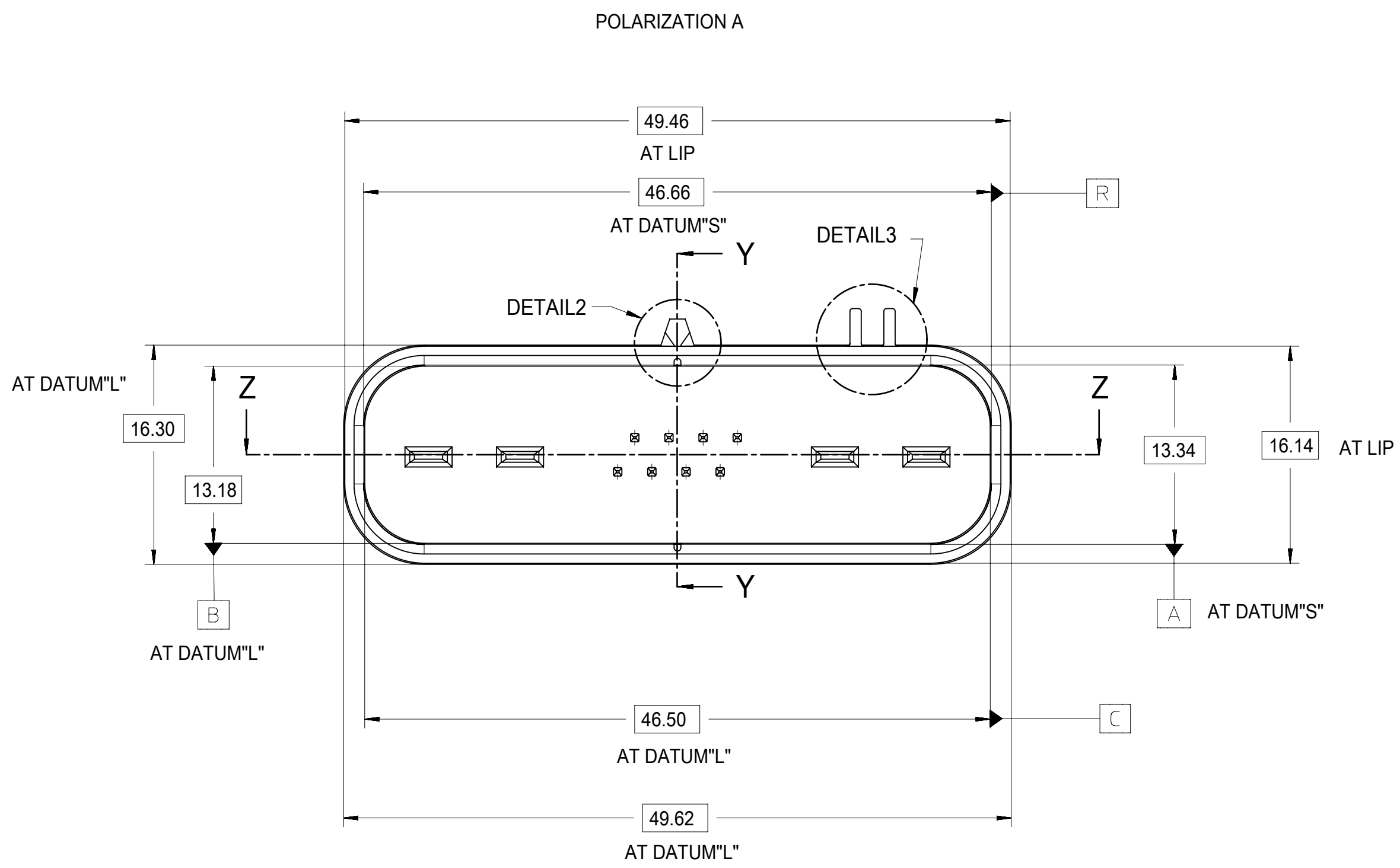
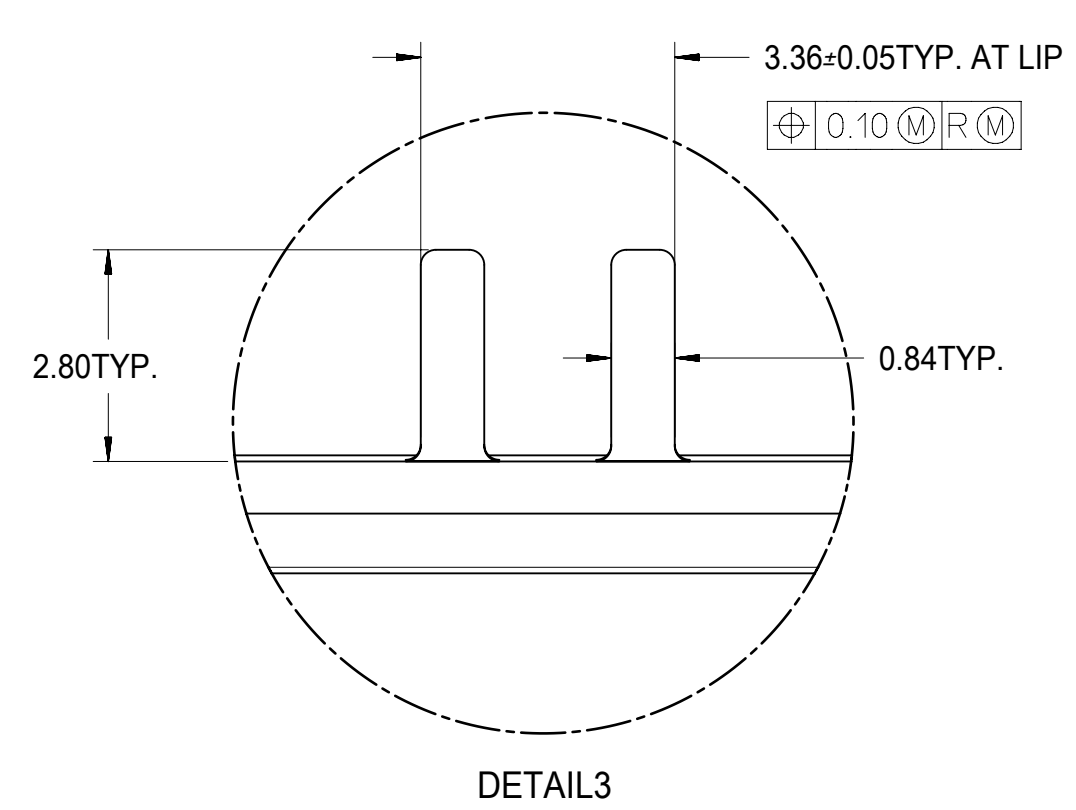
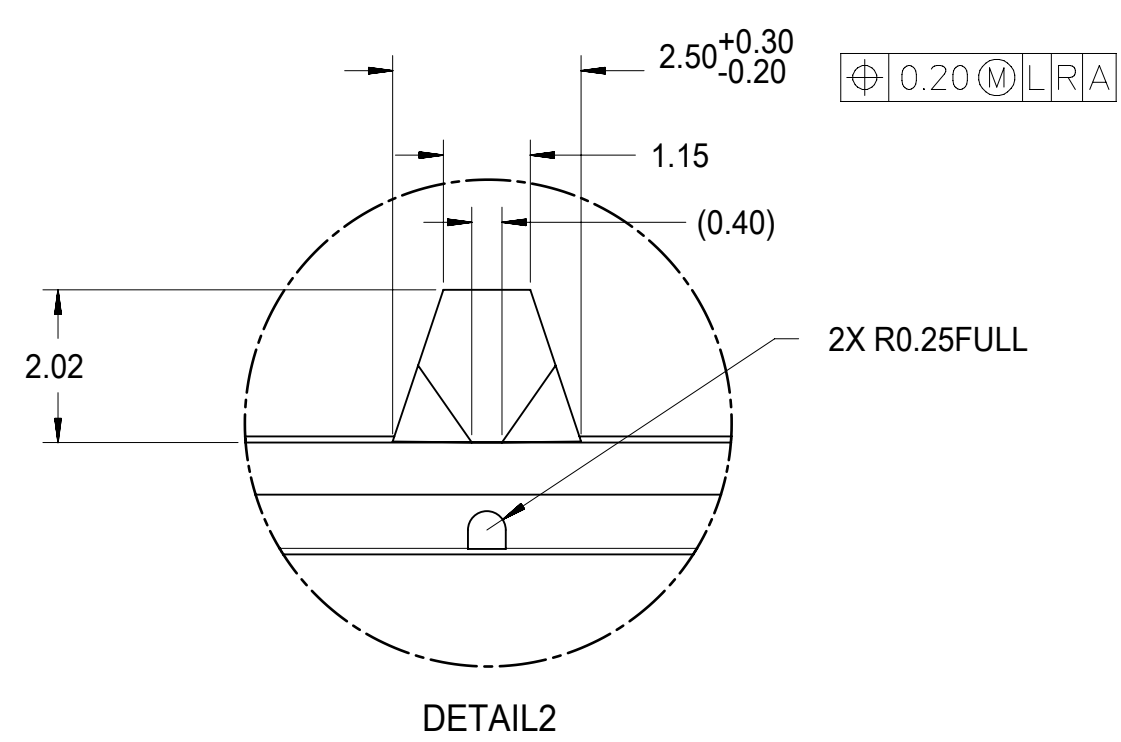
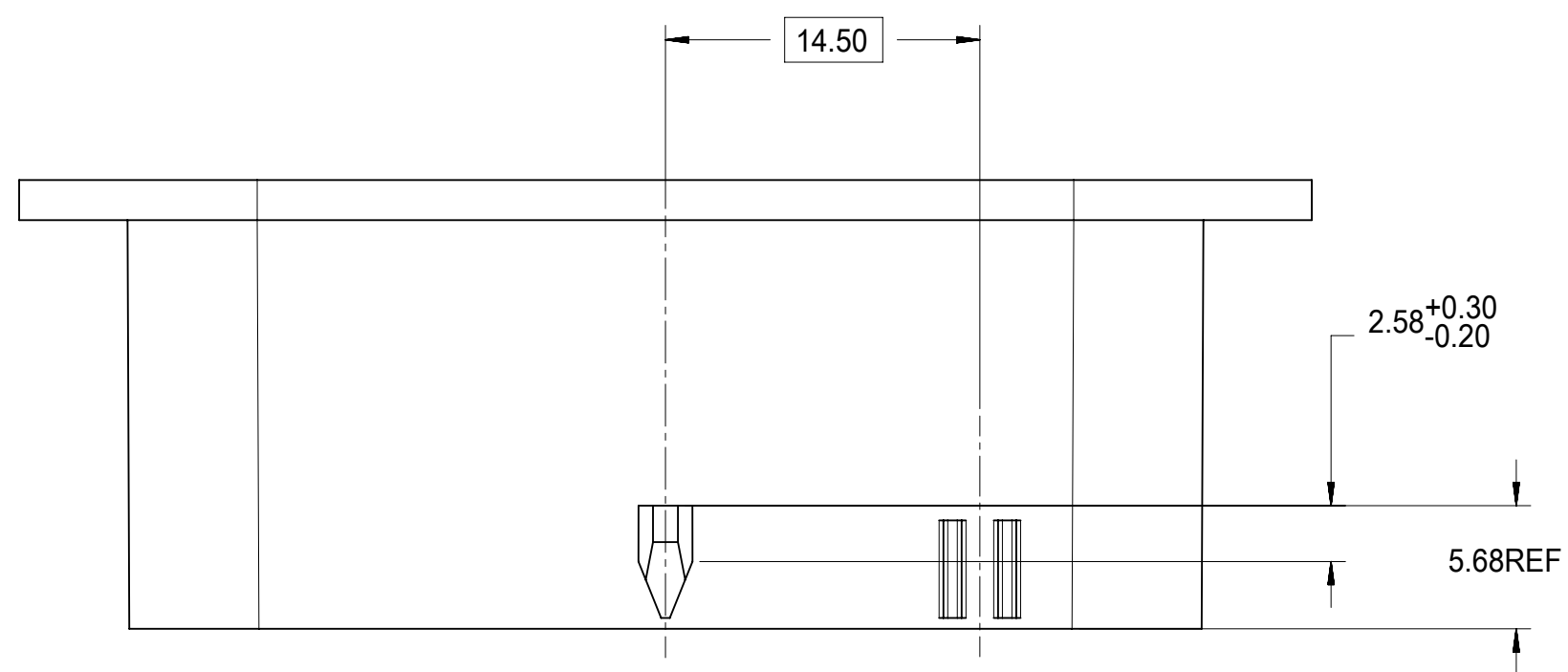
QUALITY SYMBOLS FA = 0 FE = 0 FE = 0 ▼ = 0 C = 0 ☒ = 0 ■ = 0 ∇ = 0		THIS DRAWING CONTAINS INFORMATION THAT IS PROPRIETARY TO MOLEX ELECTRONIC TECHNOLOGIES, LLC AND SHOULD NOT BE USED WITHOUT WRITTEN PERMISSION		GENERAL TOLERANCES (UNLESS SPECIFIED) DIMENSION UNITS: mm SCALE: 1:1 DRWN BY: PXU25 DATE: 2017/08/09 CHK'D BY: GLI04 DATE: 2017/09/05 APPR BY: JDENG02 DATE: 2017/09/19 DRAWING SIZE: A1 THIRD ANGLE PROJECTION			
EC NO: 608393 DRWN: HKLIANG CHKD: JDENG02 REV: APPR: JDENG02		2018/12/04 2018/12/07 2018/12/07		4 PLACES ± 3 PLACES ± 2 PLACES ± 0.13 1 PLACE ± 0.25 0 PLACES ±		12 WAY HYBRID HARNESS CONNECTOR ASSEMBLY ISO WIRE PRODUCT CUSTOMER DRAWING	
RELEASE STATUS: P1 RELEASE DATE: 2018/12/07 20:02:29		DRAFT WHERE APPLICABLE MUST REMAIN WITHIN DIMENSIONS		SERIES: 31034 MATERIAL NUMBER: SEE CHART CUSTOMER:		DOCUMENT NUMBER: SD-31034-001 DOC TYPE: PSD DOC PART: 001 SHEET NUMBER: 2 OF 5	

MOLEX ASSEMBLY NUMBER	CONNECTOR W/ CPA OPTION	HARNESS HOUSING NUMBER	POLARIZATION	MATTE SEAL COVER NUMBER	PLUGGED TERMINAL CAVITY LOCATIONS								TOTAL NUMBER OF PLUGGED CAVITIES	
31034-5000	NO	31035-1000	A	31037-1000										0
31034-5001	NO	31035-1000	A	31037-1001	1	2	3	4	9	10	11	12		8
31034-5002	NO	31035-1000	A	31037-1002		2	3							2
31034-5003	NO	31035-1000	A	31037-1003		2								1
31034-5004	NO	31035-1000	A	31037-1004				4						1
31034-5005	NO	31035-1000	A	31037-1005		2	4							2
31034-5006	NO	31035-1000	A	31037-1006		2	3	4						3
31034-6000	YES	31035-1000	A	31037-1000										0
31034-6001	YES	31035-1000	A	31037-1001	1	2	3	4	9	10	11	12		8
31034-6002	YES	31035-1000	A	31037-1002		2	3							2
31034-6003	YES	31035-1000	A	31037-1003		2								1
31034-6004	YES	31035-1000	A	31037-1004				4						1
31034-6005	YES	31035-1000	A	31037-1005		2	4							2
31034-6006	YES	31035-1000	A	31037-1006		2	3	4						3
31034-6010	YES	31035-1000	A	31037-1009			3	4						2
31034-6007	YES	31035-1001	B	31037-1000										0
31034-5007	NO	31035-1001	B	31037-1000										0
31034-6008	YES	31035-1001	B	31037-1007		2			9	10				3
31034-6009	YES	31035-1001	B	31037-1008		2			9	10	11	12		5
31034-6011	YES	31035-1001	B	31037-1010		2			9	10	11			4
31034-6012	YES	31035-1001	B	31037-1011		2			9					2
31034-6013	YES	31035-1001	B	31037-1012		2			9		11	12		4
31034-6014	YES	31035-1001	B	31037-1013		2	3		9	10	11	12		6
31034-6015	YES	31035-1001	B	31037-1014		2				10	11			3
31034-5016	NO	31035-1000	A	31037-1015		2	3		9					3
31034-5017	NO	31035-1000	A	31037-1016				4		10	11			3
31034-6016	YES	31035-1001	B	31037-1017		2	3		9	10				4
31034-6017	YES	31035-1001	B	31037-1015		2	3		9					3
31034-6018	YES	31035-1001	B	31037-1018		2	3		9		11	12		5
31034-5018	NO	31035-1000	A	31037-1017		2	3		9	10				4
31034-5019	NO	31035-1000	A	31037-1019		2	3		9	10	12			5
31034-6019	YES	31035-1000	A	31037-1015		2	3		9					3
31034-6020	YES	31035-1000	A	31037-1017		2	3		9	10				4
31034-6021	YES	31035-1000	A	31037-1018		2	3		9		11	12		5
31034-6022	YES	31035-1000	A	31037-1013		2	3		9	10	11	12		6
31034-6024	YES	31035-1000	A	31037-1020		2	3		9	10	11			5
31034-5021	NO	31035-1000	A	31037-1013		2	3		9	10	11	12		6
31034-6025	YES	31035-1001	B	31037-1002		2	3							2

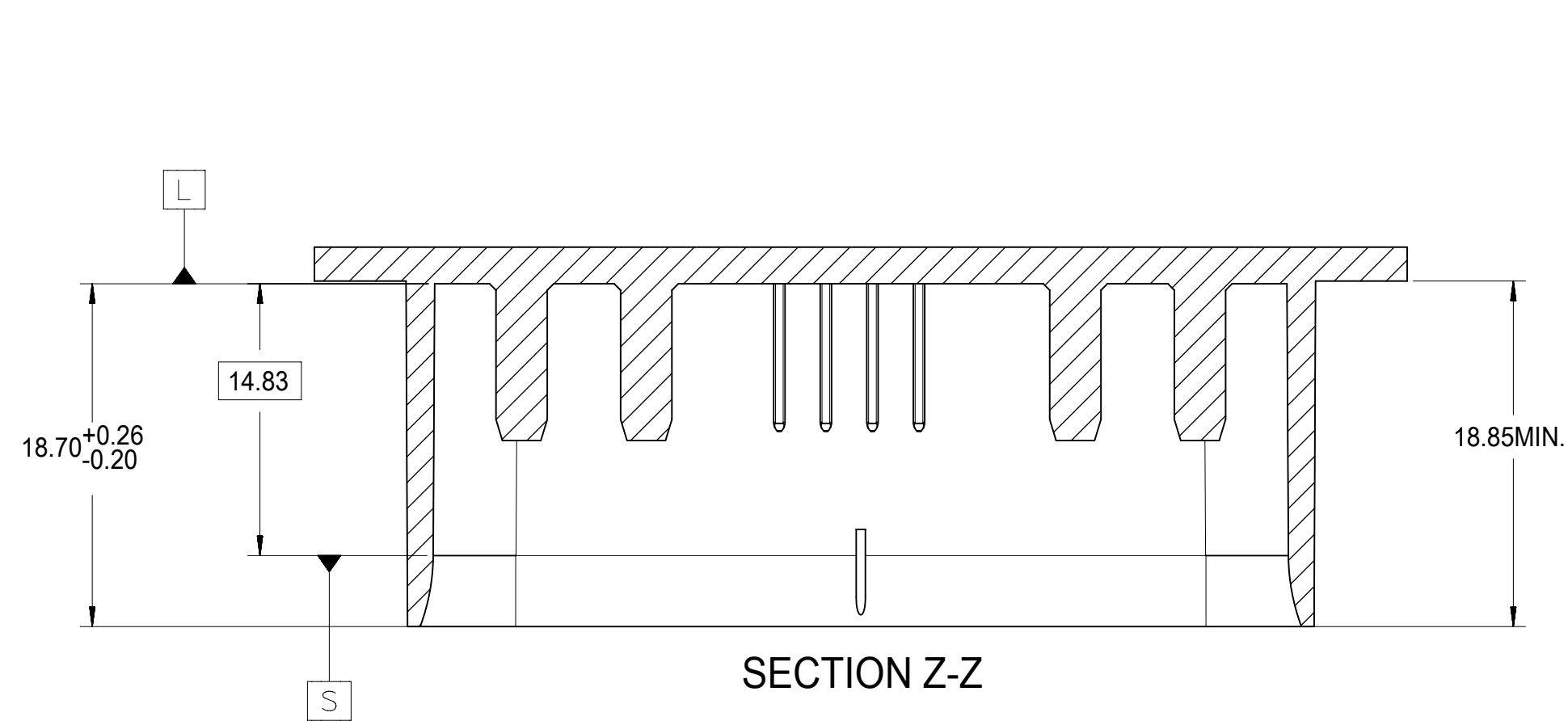
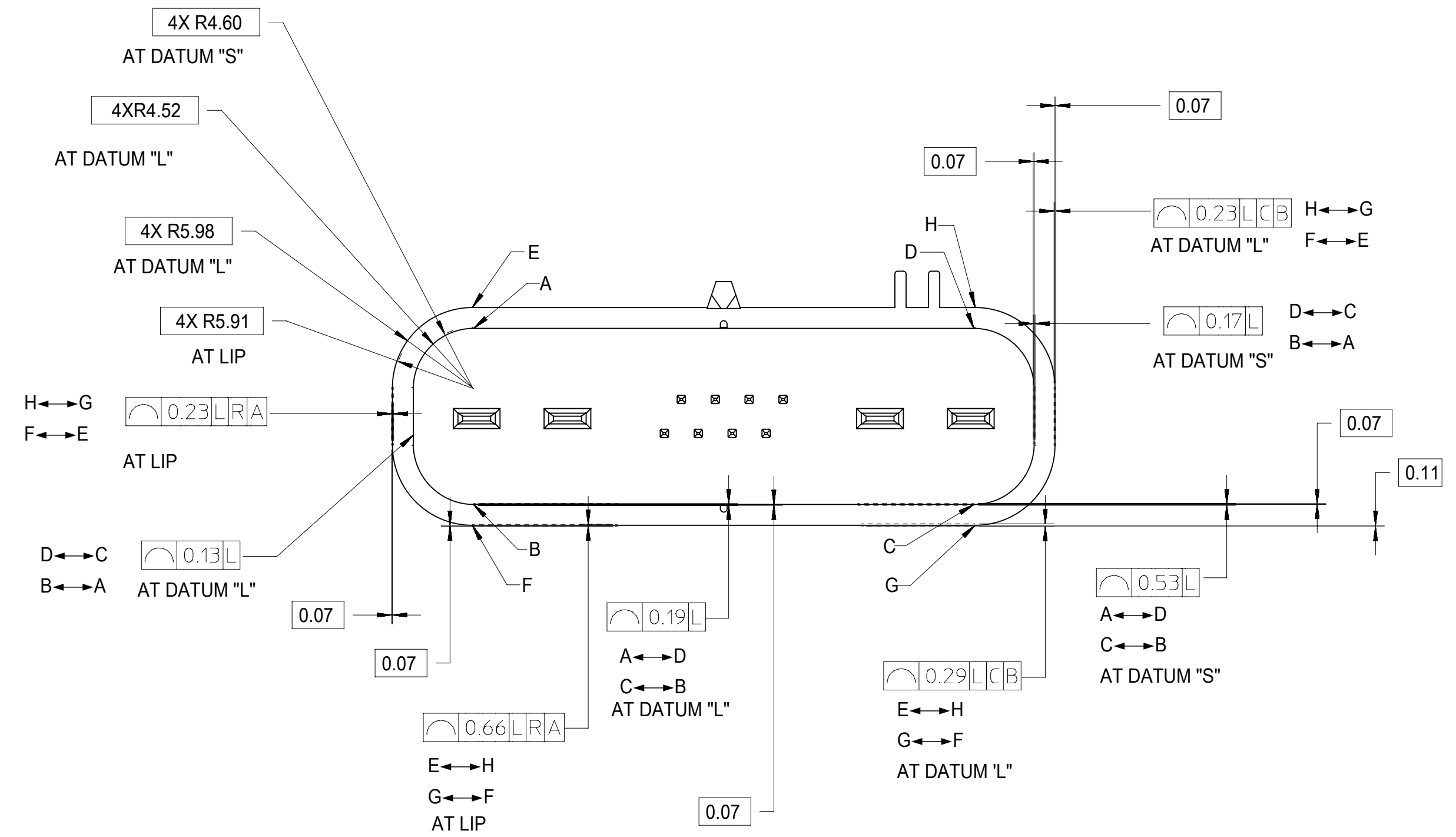
ⓓ

TERMINAL TABLE				
DESCRIPTION	NORMINAL TERMINAL SIZE	PART NUMBER	WIRE SIZE	INSULATION DIAMETER RANGE
TE-RECEPTACLE	0.64 (SN)	1393367-1	22AWG 0.35MM ²	1.2-1.65MM
TE-RECEPTACLE	0.64 (SN)	1393366-1	18-20AWG 0.75-0.5MM ²	1.4-2.06MM
TE-RECEPTACLE	2.80 (SN)	1326032-6	12AWG	3.1-3.3MM
TE-RECEPTACLE	2.80 (SN)	1326032-5	14AWG	2.1-3.0MM
TE-RECEPTACLE	2.80 (SN)	1326032-4	16AWG	1.8-2.3MM
TE-RECEPTACLE	2.80 (SN)	1326032-3	18AWG	1.8-2.3MM
TE-RECEPTACLE	2.80 (SN)	1326032-2	20AWG	1.2-1.9MM
TE-RECEPTACLE	2.80 (SN)	1326032-1	22AWG	1.2-1.9MM

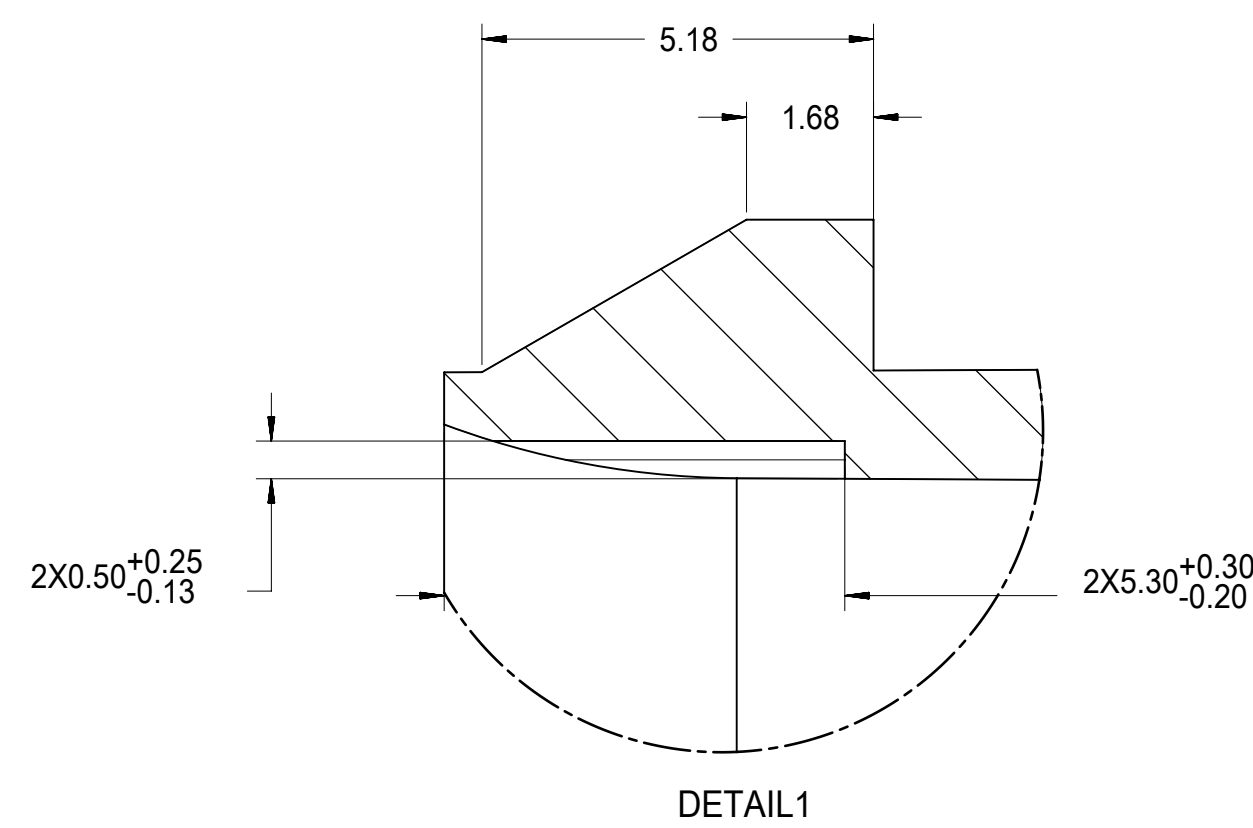
QUALITY SYMBOLS 	THIS DRAWING CONTAINS INFORMATION THAT IS PROPRIETARY TO MOLEX ELECTRONIC TECHNOLOGIES, LLC AND SHOULD NOT BE USED WITHOUT WRITTEN PERMISSION									
	EC NO: 608393 DRWN: HKLIANG CHKD: JDENG02 REV APPR: JDENG02	2018/12/04	GENERAL TOLERANCES (UNLESS SPECIFIED)		DIMENSION UNITS	SCALE				
		2018/12/07	ANGULAR TOL ± 0.5 °		mm	1:1				
	PXU25		DATE	2017/08/09						
	4 PLACES ±		CHK'D BY	DATE						
	3 PLACES ±		GLI04		DATE	2017/09/05				
	2 PLACES ± 0.13		APPR BY	DATE						
	1 PLACE ± 0.25		JDENG02		DATE	2017/09/19				
	0 PLACES ±		DRAWING SIZE	THIRD ANGLE PROJECTION		A1				
	DRAFT WHERE APPLICABLE MUST REMAIN WITHIN DIMENSIONS									
SERIES		MATERIAL NUMBER		CUSTOMER		31034 SEE CHART				
DOCUMENT NUMBER		DOC TYPE		DOC PART		SHEET NUMBER				
SD-31034-001		PSD		001		3 OF 5				



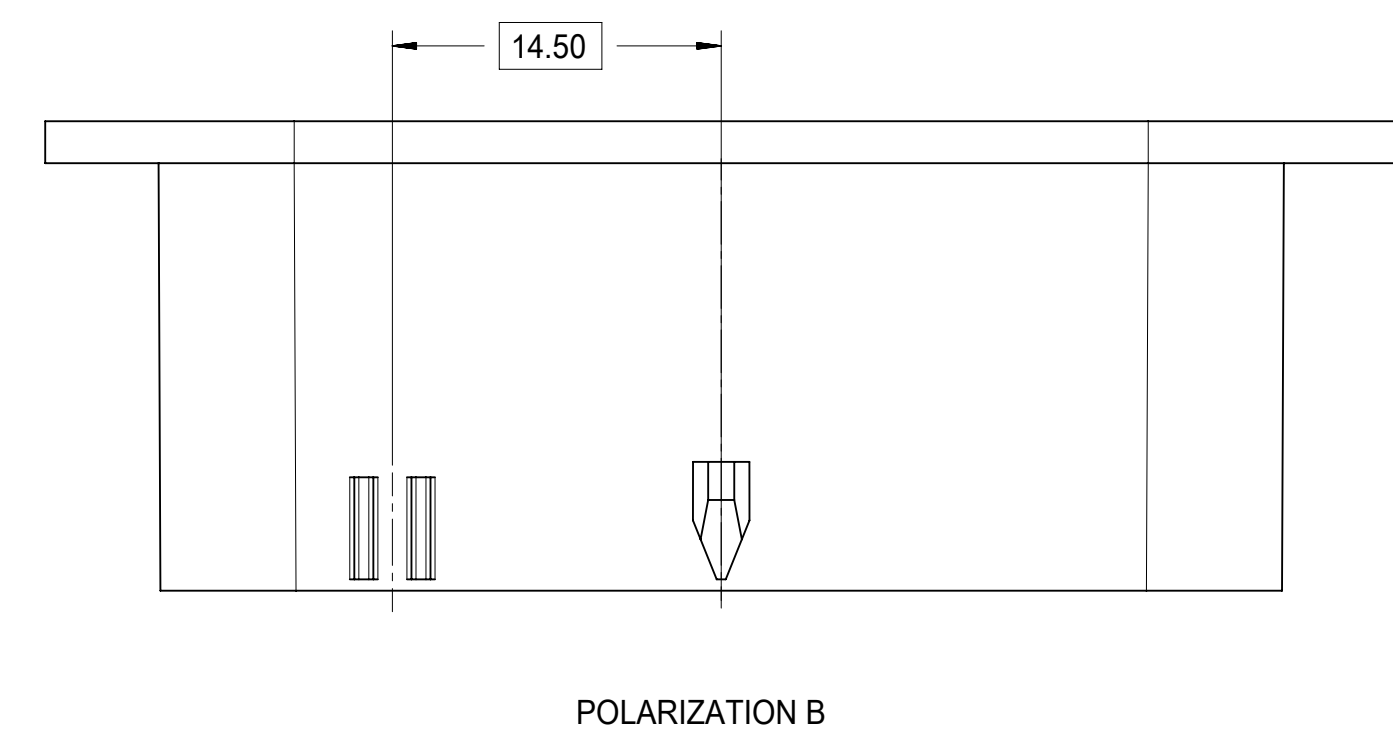
SECTION Y-Y



SECTION Z-Z



DETAIL1

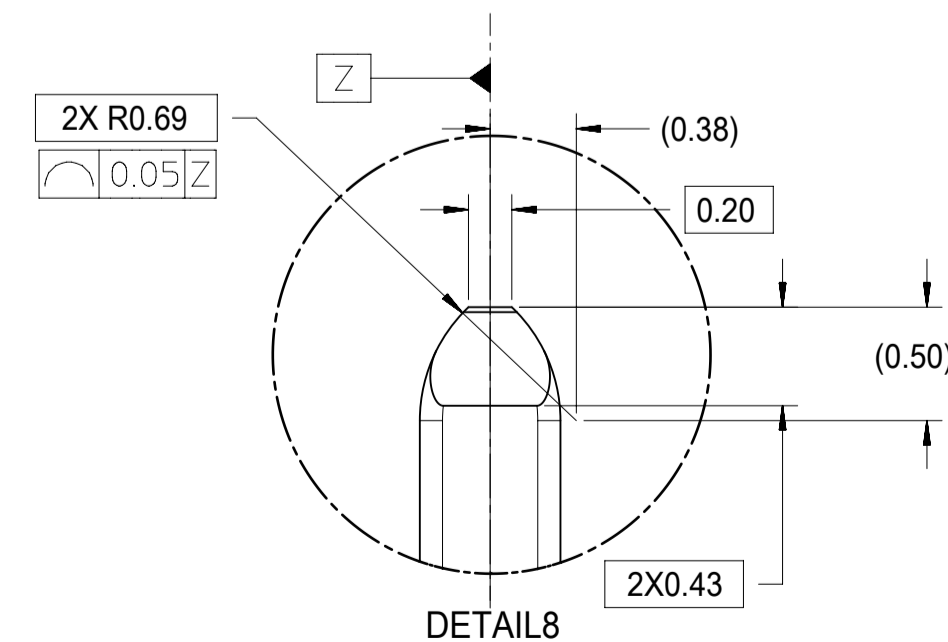
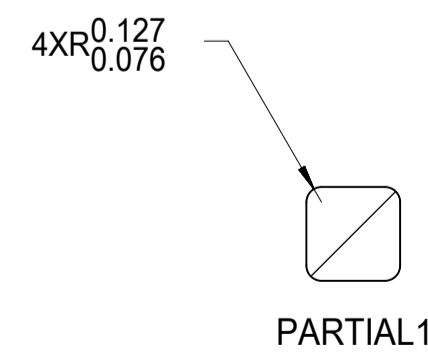
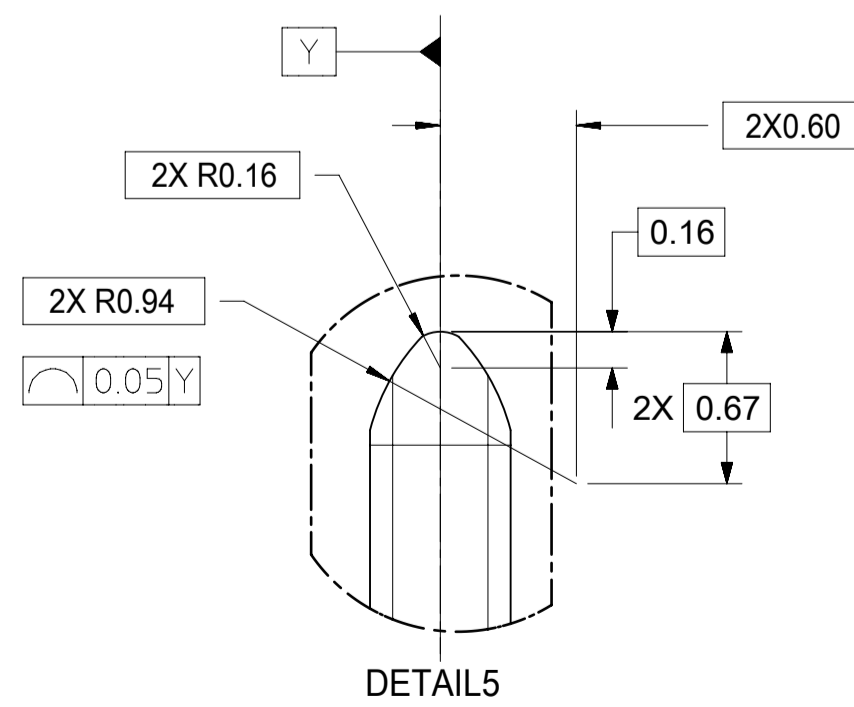
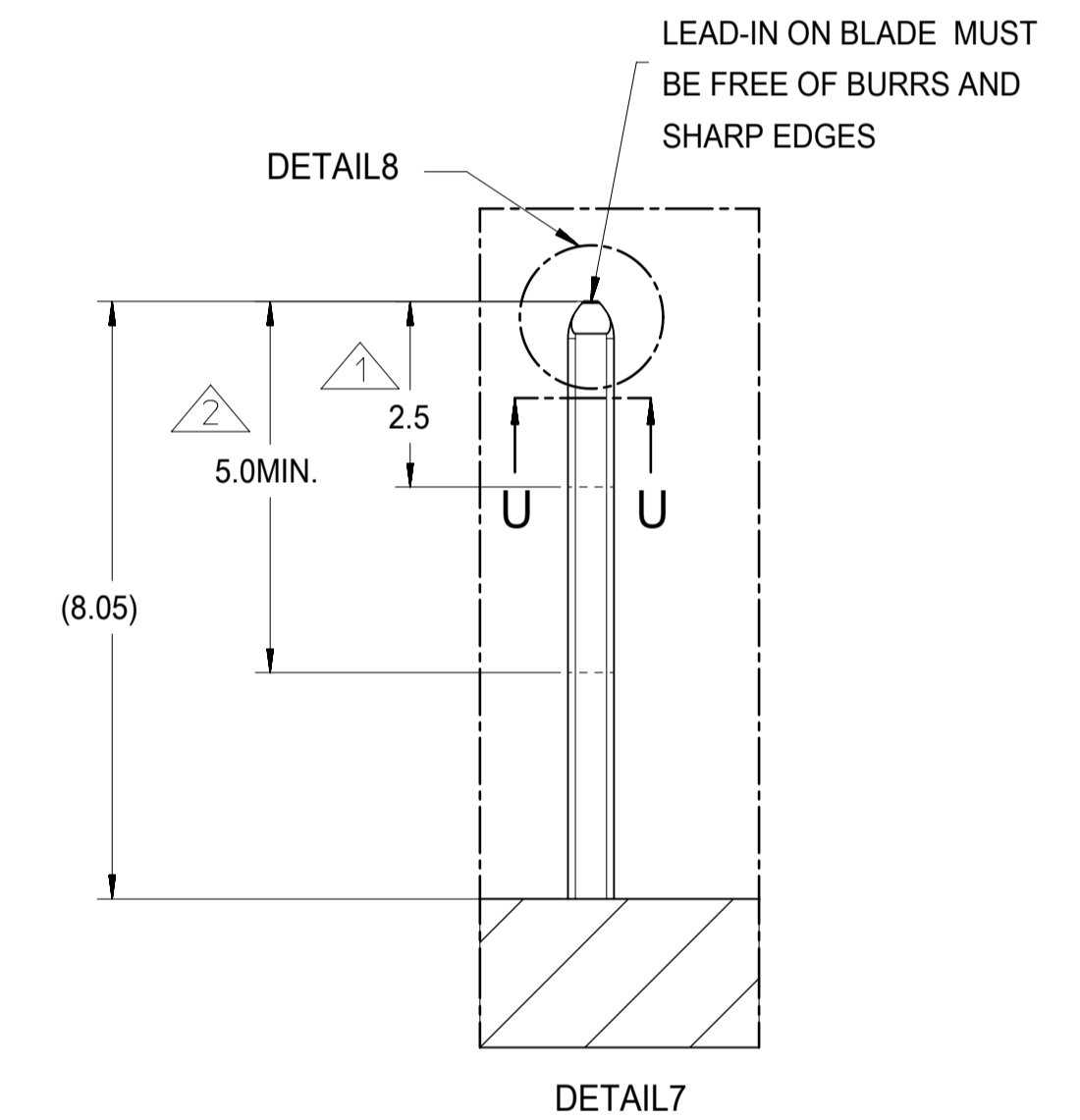
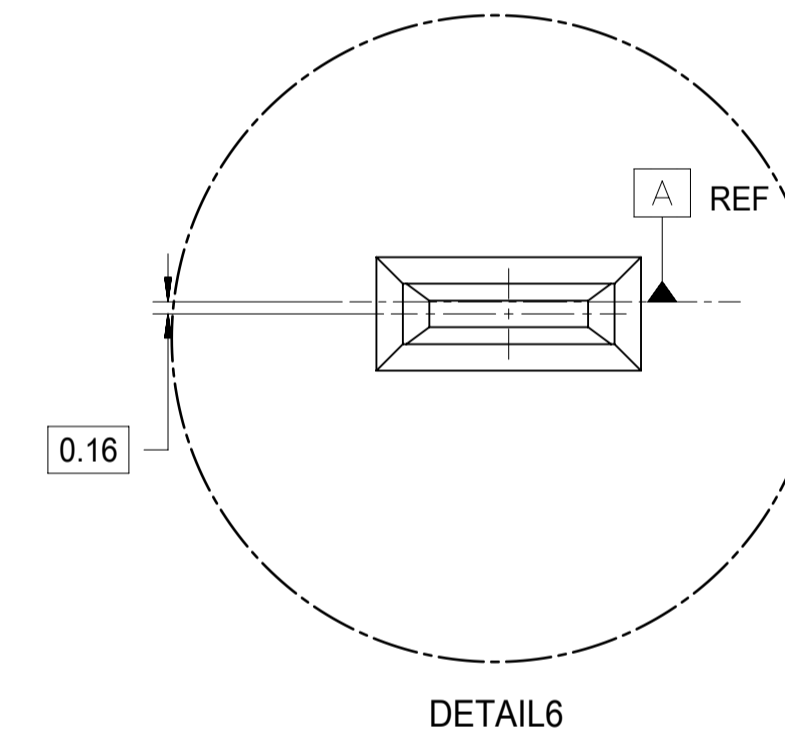
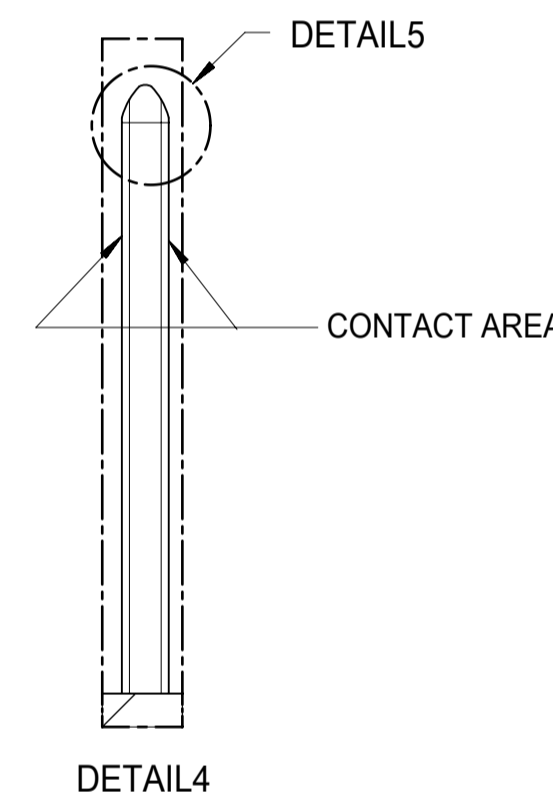
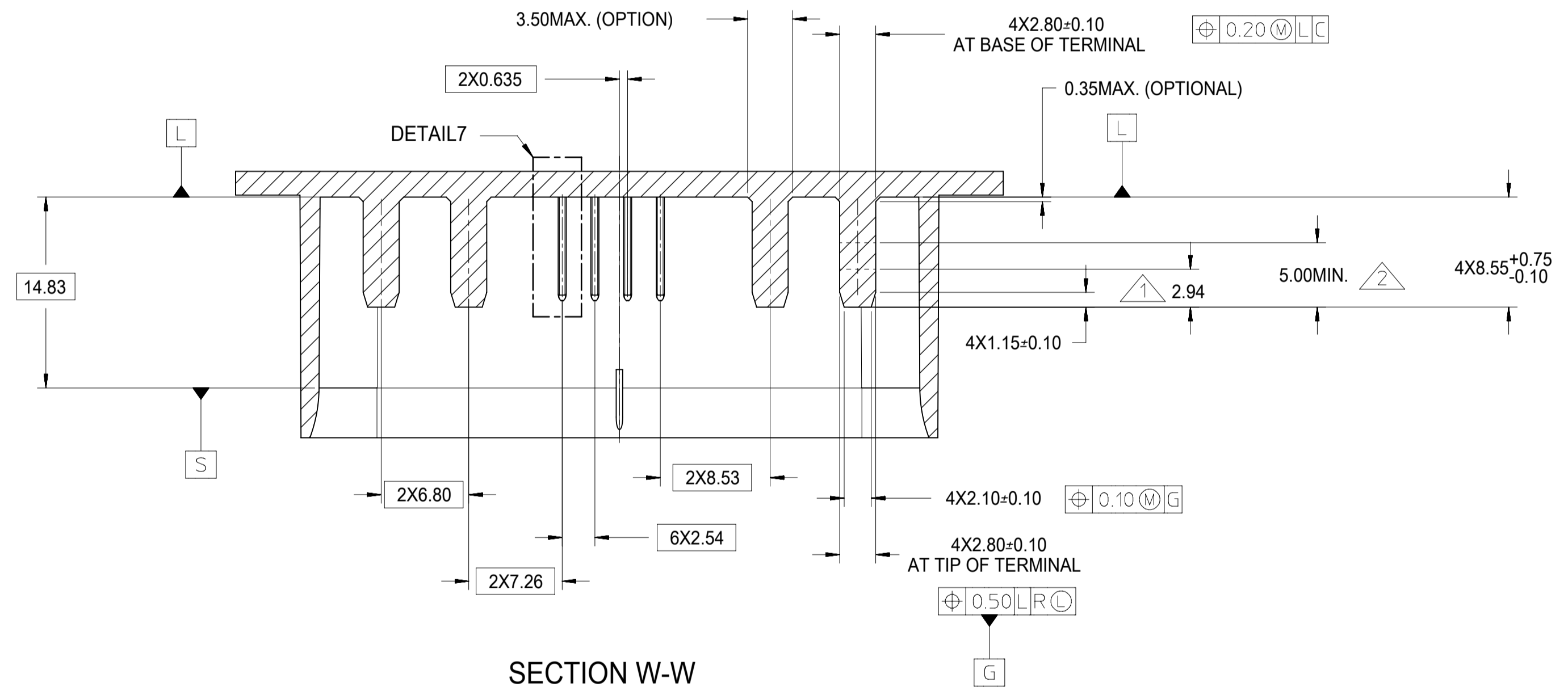
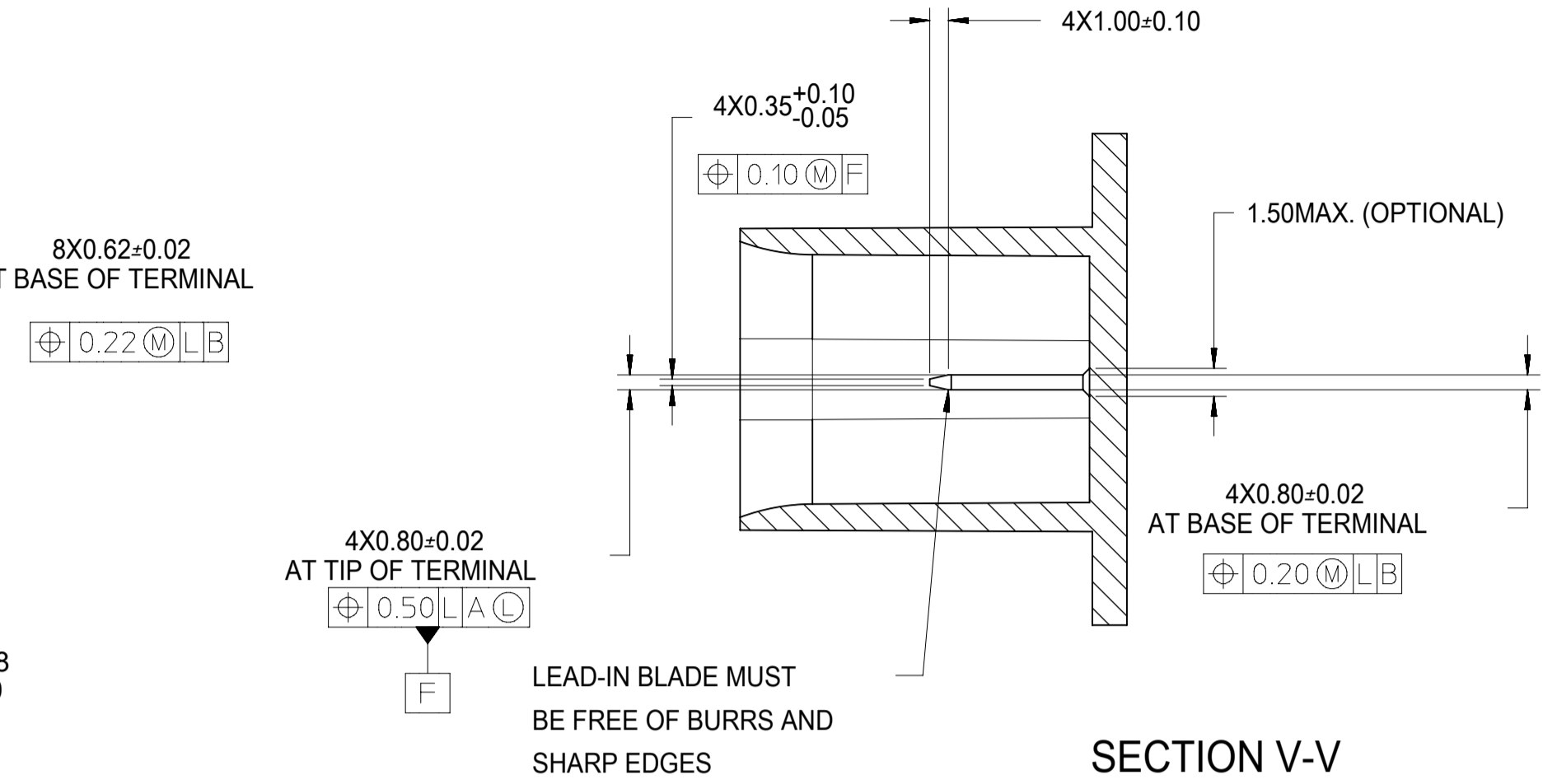
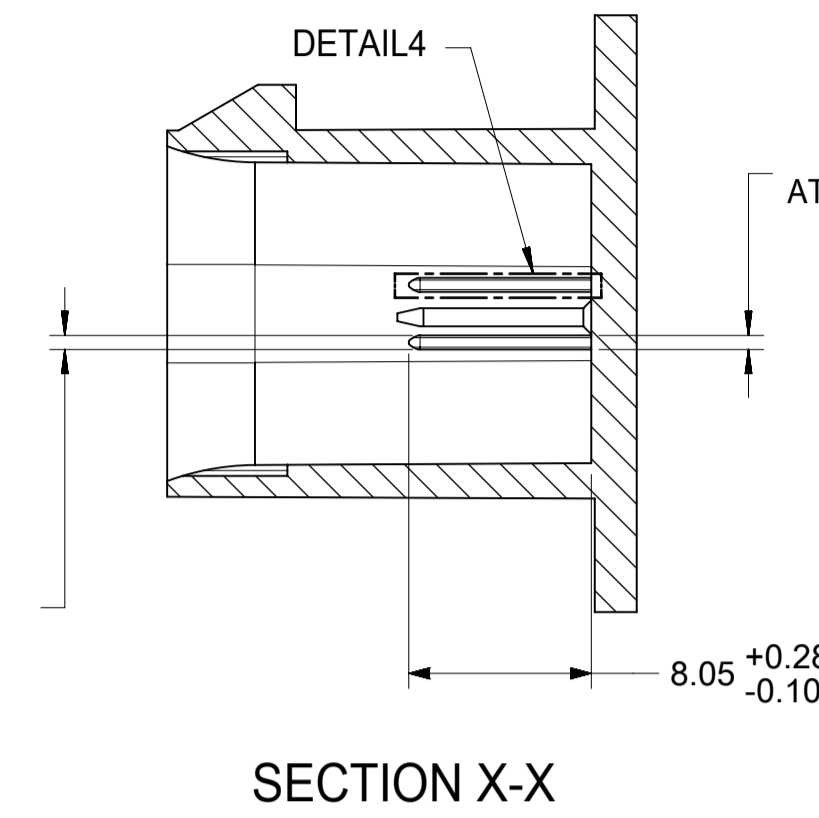
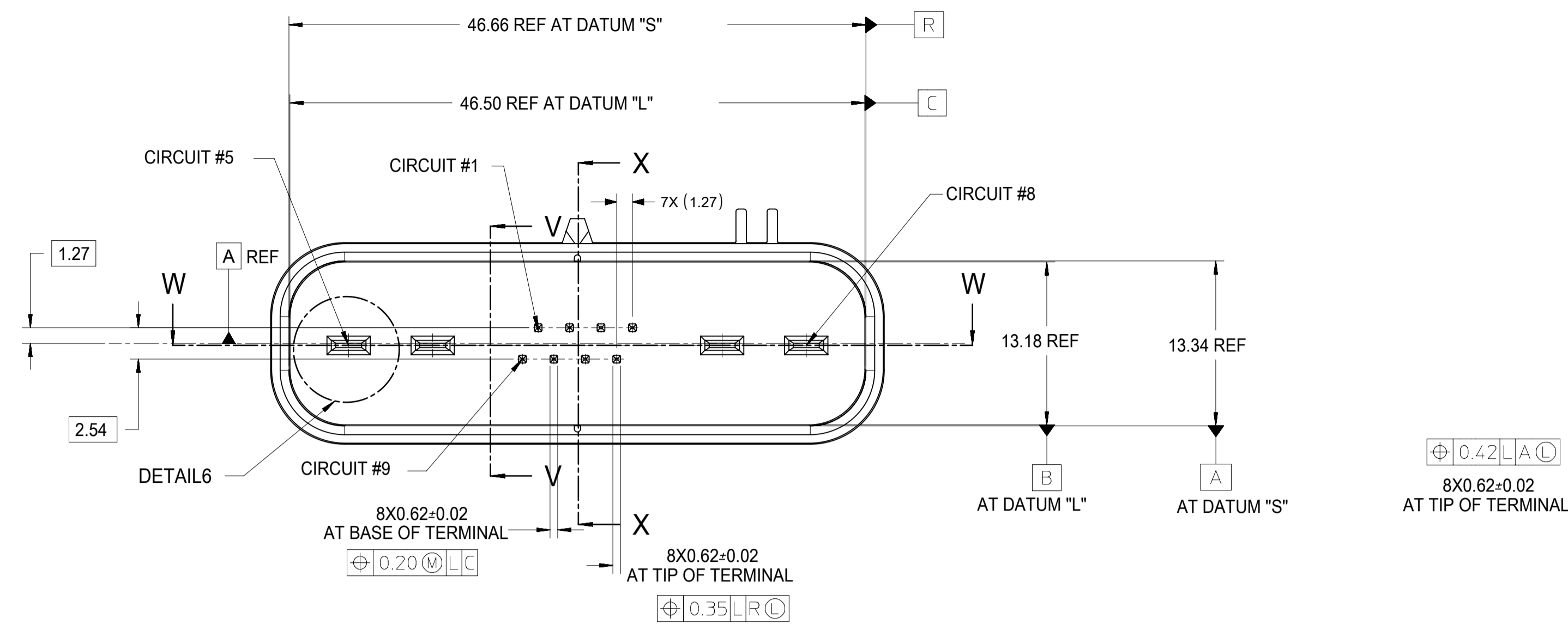


POLARIZATION B

NOTES: UNLESS OTHERWISE SPECIFIED.

6. THE STEEL THAT FORMS THE INSIDE SURFACE OF THE HEADER FLANGE TO 10.00MM INSIDE MUST BE POLISHED WITH A DIAMOND FINISH (SPI A-2) OVER THE FULL PERIPHERY OF THE TOOL. THIS SURFACE MUST ALSO HAVE NO STEEL MATCH OR PARTING LINES.

THIS DRAWING CONTAINS INFORMATION THAT IS PROPRIETARY TO MOLEX ELECTRONIC TECHNOLOGIES, LLC AND SHOULD NOT BE USED WITHOUT WRITTEN PERMISSION											
QUALITY SYMBOLS		GENERAL TOLERANCES (UNLESS SPECIFIED)			DIMENSION UNITS		SCALE				
FA = 0 FE = 0 EE = 0 TD = 0 CC = 0 X = 0 ■ = 0 VC = 0		mm			1:1		1:1				
EC NO: 608393 DRWN: HKLIANG CHKD: JDENG02 REV: APPR: JDENG02		2018/12/04 2018/12/07 2018/12/07			DRWN BY: PXU25 DATE: 2017/08/09		CHKD BY: GLI04 DATE: 2017/09/05		12 WAY HYBRID HARNESS CONNECTOR ASSEMBLY ISO WIRE		
4 PLACES ± 3 PLACES ± 2 PLACES ± 0.13 1 PLACE ± 0.25 0 PLACES ±		ANGULAR TOL ± 0.5 ° DRAFT WHERE APPLICABLE MUST REMAIN WITHIN DIMENSIONS			DRAWING SIZE: A1 THIRD ANGLE PROJECTION		APPR BY: JDENG02 DATE: 2017/09/19		PRODUCT CUSTOMER DRAWING		
RELEASE STATUS: P1		RELEASE DATE: 2018/12/07 20:02:29		SERIES: 31034		MATERIAL NUMBER: SEE CHART		CUSTOMER:		DOCUMENT NUMBER: SD-31034-001	
				DOC TYPE: PSD		DOC PART: 001		SHEET NUMBER: 4 OF 5			



NOTES: UNLESS OTHERWISE SPECIFIED.
 ▲ PLATING POINT OF MEASUREMENT.
 ▲ PLATING TO BE 2.50-4.00 MICROMETERS BRIGHT TIN OVER 1.25-2.25 MICROMETERS NICKEL PER FORD ES-F8D8-14A229-AA/BA/CA/DA, REVISION"RELEASE". NO BARE EDGES ALLOWED.

QUALITY SYMBOLS	THIS DRAWING CONTAINS INFORMATION THAT IS PROPRIETARY TO MOLEX ELECTRONIC TECHNOLOGIES, LLC AND SHOULD NOT BE USED WITHOUT WRITTEN PERMISSION			
	FA = 0 FE = 0 FE = 0 ▼ = 0 C = 0 ☒ = 0 ■ = 0 ∇ = 0	EC NO: 608393 DRWN: HKLIANG CHKD: JDENG02 REV APPR: JDENG02	2018/12/04 2018/12/07 2018/12/07	GENERAL TOLERANCES (UNLESS SPECIFIED) ANGULAR TOL ± 0.5 ° 4 PLACES ± 3 PLACES ± 2 PLACES ± 0.13 1 PLACE ± 0.25 0 PLACES ± DRAFT WHERE APPLICABLE MUST REMAIN WITHIN DIMENSIONS
RELEASE STATUS: P1 RELEASE DATE: 2018/12/07 20:02:29		PRODUCT CUSTOMER DRAWING SERIES: 31034 MATERIAL NUMBER: SEE CHART CUSTOMER:		DOCUMENT NUMBER: SD-31034-001 DOC TYPE: PSD DOC PART: 001 SHEET NUMBER: 5 OF 5