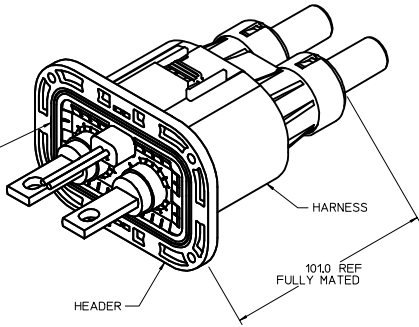
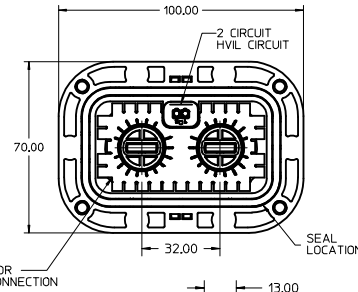
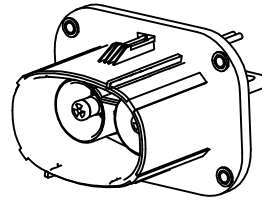


| PART NUMBER | KEYING OPTION |
|-------------|---------------|
| 171467-1001 | A |
| 171467-1002 | B |

MAIN PANEL SEAL MUST BE FULLY SEATED IN SEAL CAVITY BEFORE ATTACHMENT TO PANEL

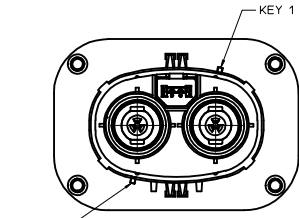


HEADER MATED TO HARNESS

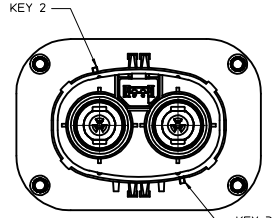


NOTES:

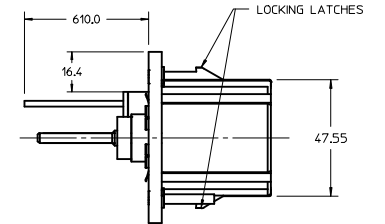
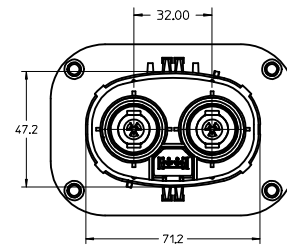
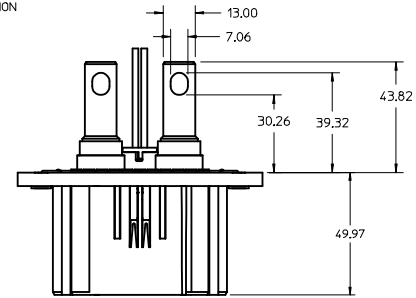
- MATERIAL:
MAIN HOUSING: POLYESTER 94V-0 (OPTIONAL UV STABILIZED)
COLOR: ORANGE
POWER TERMINALS: COPPER
HVIL TERMINALS: COPPER ALLOY
- FINISH:
POWER TERMINALS: SILVER OVER NICKEL PLATING
HVIL TERMINALS: TIN OVER NICKEL PLATING
- WIRE FOR HVIL TERMINALS: 18 GAGE TXL AUTOMOTIVE GRADE STRANDED WIRE
- MATES WITH HARNESS ASSEMBLY SERIES 171466-1***
- ATTACH HEADER WITH SCREWS TO PANEL PER MOLEX APPLICATION SPEC
- PRODUCT SPECIFICATION: PS-171467-001
- APPLICATION SPECIFICATION: AS-171467-001
- PACKAGING SPECIFICATION: PK-171467-999
- SHIELD MATING SURFACE WITHIN THE KEEP OUT ZONE MUST BE A CLEAN SURFACE WITH TIN OR NICKEL PLATING
- BUS BAR AND MOUNTING HARDWARE TO BE OVERALL TIN PLATED



OPTION A
KEYING 1-4
MOLEX STANDARD
KEYIN VERSION

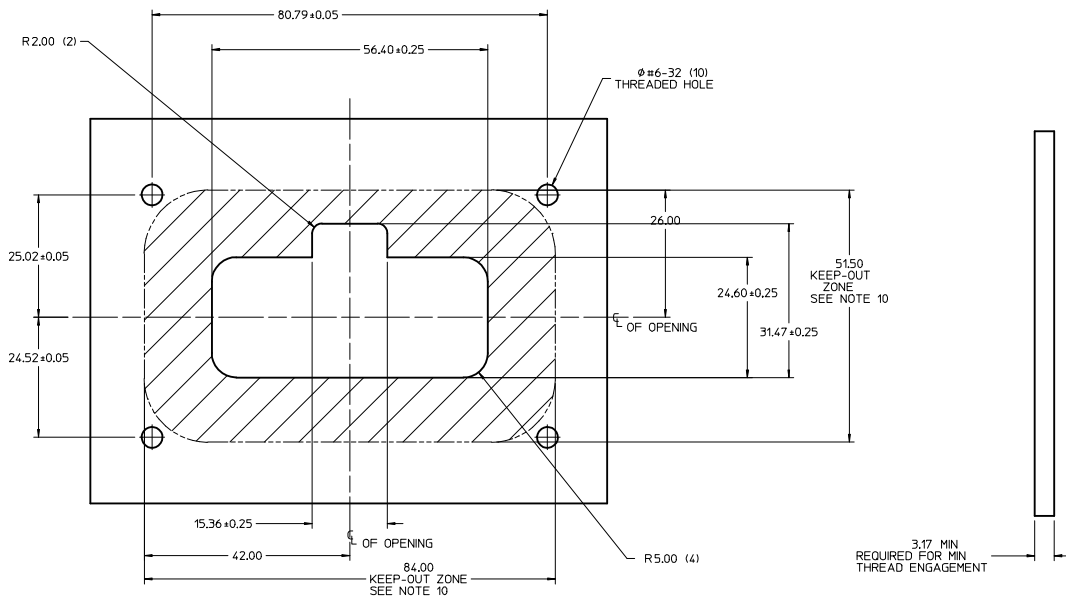


OPTION B
KEYING 2-3

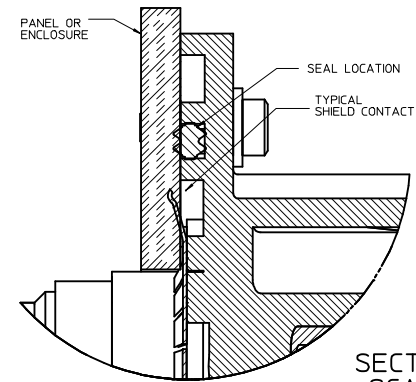
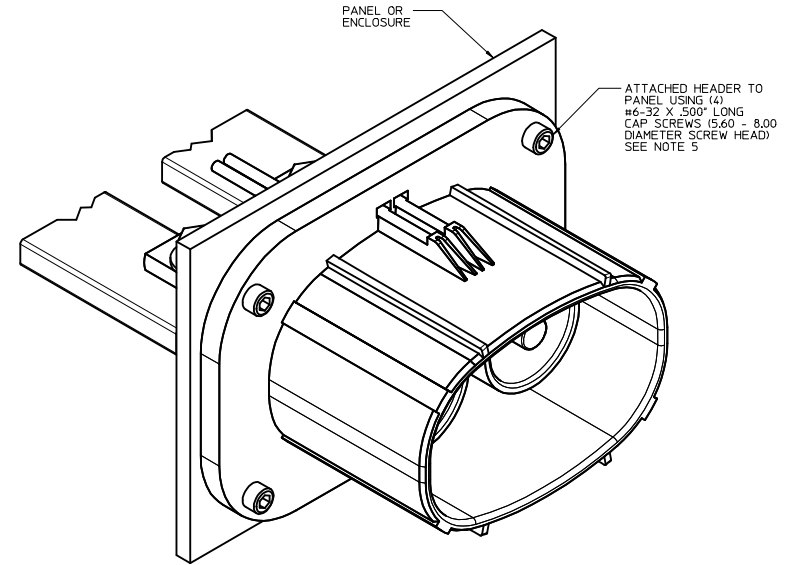


USE OF THIS PRODUCT REQUIRES THAT APPROPRIATE HIGH VOLTAGE WARNING LABELS BE APPLIED TO THE CABLE ASSEMBLY AND/OR IN CLOSE PROXIMITY OF THE MATED CONNECTOR APPLICATION IN A MANNER THAT PROVIDES SUITABLE WARNING TO THE END USER AND MEETS APPLICABLE LAWS. IT IS THE RESPONSIBILITY OF THE OEM OR MANUFACTURER OF THE PRODUCT IN WHICH THIS CONNECTOR SYSTEM IS USED TO APPLY THE APPROPRIATE HIGH VOLTAGE WARNING LABEL(S) TO THE FINAL PRODUCT. TO THE EXTENT MOLEX IS NOT RESPONSIBLE FOR THE FINAL CABLE ASSEMBLY, MOLEX DISCLAIMS ALL WARRANTIES AND LIABILITY THAT RESULT FROM A FAILURE TO PROVIDE AN APPROPRIATE WARNING.

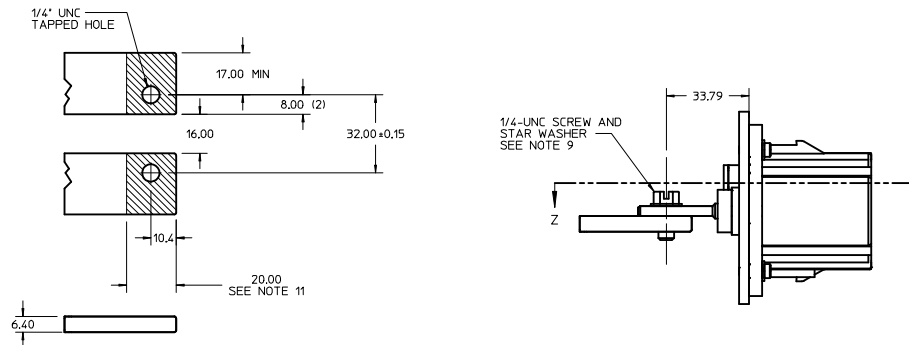
| | | | | | | | | |
|---|----------------------------------|------------|--------------------------------------|--|--------------------------------------|--------------|------------------------|------------------------|
| REVISED PIN LOCATION EC NO: UCP2017-1062 DRAWN BY: MDATA CHKD: MDATA APPR: APATEL REV: 1 | 2016/10/02 | 2016/10/21 | QUALITY SYMBOLS ▽=0 ▽=0 ▽=0 | GENERAL TOLERANCES (UNLESS SPECIFIED) mm INCH 4 PLACES ±.00 ±.00 3 PLACES ±.01 ±.01 2 PLACES ±0.60 ±.01 1 PLACE ±0.90 ±.01 ANGULAR ±1/2° | DIMENSION STYLE MM ONLY | SCALE 1:1 | DESIGN UNITS METRIC | THIRD ANGLE PROJECTION |
| | DRAWN BY: MDATA DATE: 2011/12/08 | | CHECKED BY: MDATA DATE: 2011/12/21 | | APPROVED BY: APATEL DATE: 2012/04/11 | | MATERIAL NO. SEE CHART | |
| | DOCUMENT NO. SD-171467-1000 | | SHEET NO. 1 OF 2 | | MOLEX INCORPORATED | | | |



PANEL REQUIREMENTS
SCALE 2:1



SECTION Z-Z
SCALE 4:1

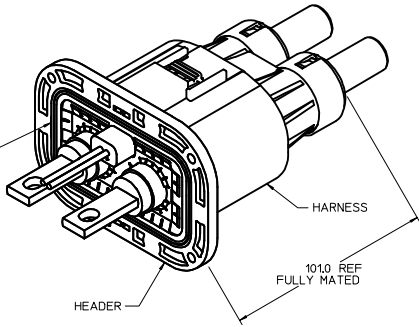


RECOMMENDED BUS BAR DETAIL

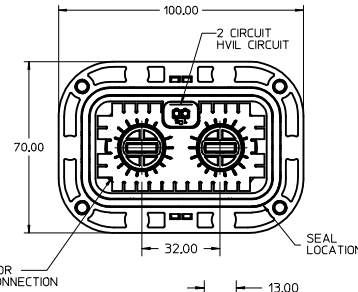
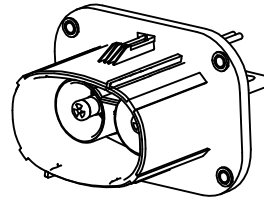
| | | | | | | |
|--|-----------------------|--|-------------------|---|---|------------------------|
| SEE SHEET 1 IEC NO: UCP2017-1062 DRAWN BY: CHYD APPR: APATEL DATE: 2016/12/21 | QUALITY SYMBOLS | GENERAL TOLERANCES (UNLESS SPECIFIED) | DIMENSION STYLE | SCALE | DESIGN UNITS | THIRD ANGLE PROJECTION |
| | ▽=0 | mm INCH | MM ONLY | 1:1 | METRIC | ☉ |
| | ▽=0 | 4 PLACES ± --- ± --- | DRAWN BY: MDATA | DATE: 2011/12/08 | TITLE: HEADER ASSY PANEL MOUNT IMPERIUM | |
| | ▽=0 | 3 PLACES ± --- ± --- | CHECKED BY: MDATA | DATE: 2011/12/21 | APPROVED BY: APATEL | DATE: 2012/04/11 |
| | 2 PLACES ± 0.60 ± --- | ANGULAR ±1/2° | SEE CHART | MATERIAL NO. SD-171467-1000 | DOCUMENT NO. SD-171467-1000 | SHEET NO. 2 OF 2 |
| | 1 PLACE ± 0.90 ± --- | DRAFT WHERE APPLICABLE MUST REMAIN WITHIN DIMENSIONS | SIZE D | THIS DRAWING CONTAINS INFORMATION THAT IS PROPRIETARY TO MOLEX INCORPORATED AND SHOULD NOT BE USED WITHOUT WRITTEN PERMISSION | | |

| PART NUMBER | KEYING OPTION |
|-------------|---------------|
| 171467-1001 | A |
| 171467-1002 | B |

MAIN PANEL SEAL MUST BE FULLY SEATED IN SEAL CAVITY BEFORE ATTACHMENT TO PANEL

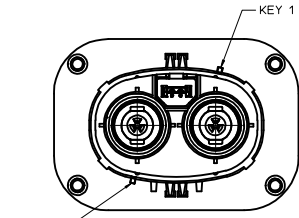


HEADER MATED TO HARNESS

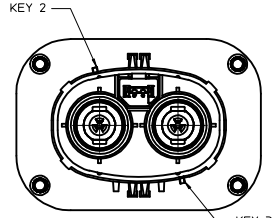


NOTES:

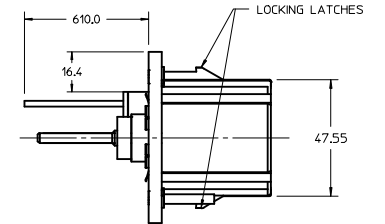
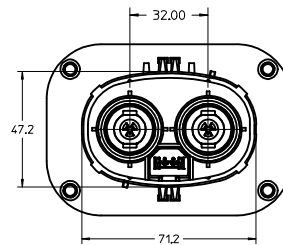
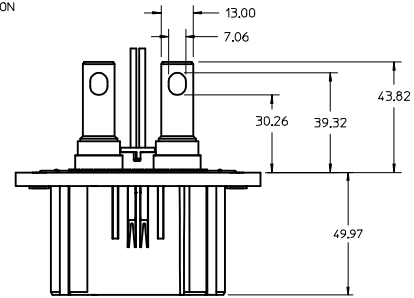
- MATERIAL:
MAIN HOUSING: POLYESTER 94V-0 (OPTIONAL UV STABILIZED)
COLOR: ORANGE
POWER TERMINALS: COPPER
HVIL TERMINALS: COPPER ALLOY
- FINISH:
POWER TERMINALS: SILVER OVER NICKEL PLATING
HVIL TERMINALS: TIN OVER NICKEL PLATING
- WIRE FOR HVIL TERMINALS: 18 GAGE TXL AUTOMOTIVE GRADE STRANDED WIRE
- MATES WITH HARNESS ASSEMBLY SERIES 171466-1***
- ATTACH HEADER WITH SCREWS TO PANEL PER MOLEX APPLICATION SPEC
- PRODUCT SPECIFICATION: PS-171467-001
- APPLICATION SPECIFICATION: AS-171467-001
- PACKAGING SPECIFICATION: PK-171467-999
- SHIELD MATING SURFACE WITHIN THE KEEP OUT ZONE MUST BE A CLEAN SURFACE WITH TIN OR NICKEL PLATING
- BUS BAR AND MOUNTING HARDWARE TO BE OVERALL TIN PLATED



OPTION A
KEYING 1-4
MOLEX STANDARD
KEYIN VERSION

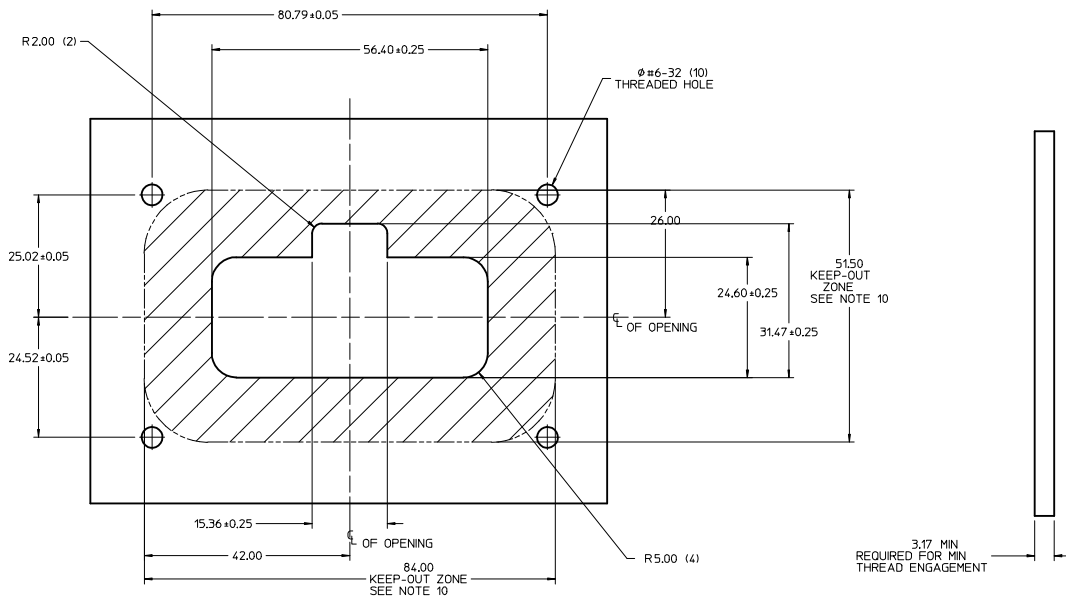


OPTION B
KEYING 2-3

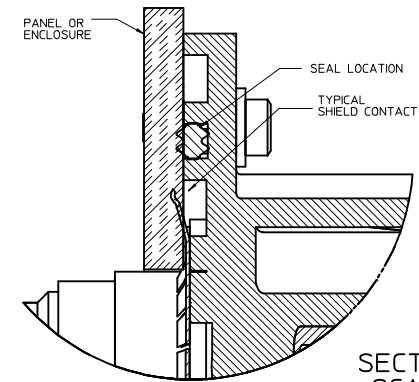
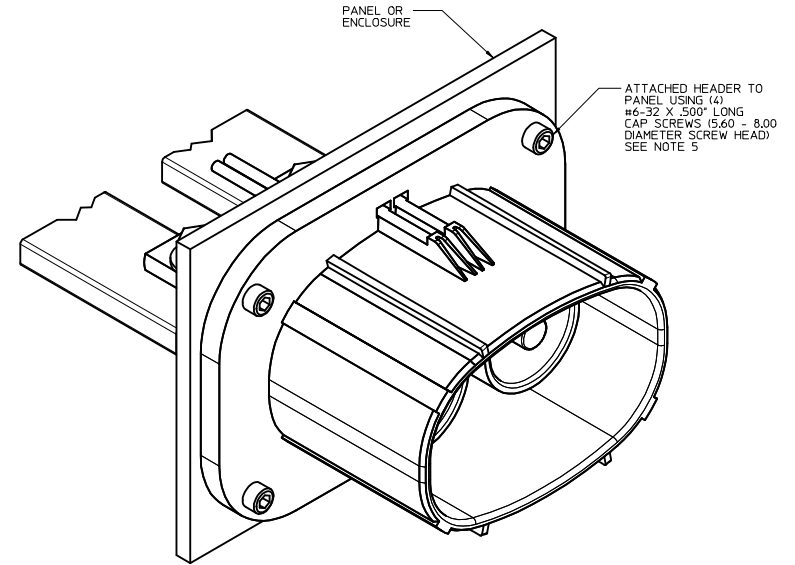


USE OF THIS PRODUCT REQUIRES THAT APPROPRIATE HIGH VOLTAGE WARNING LABELS BE APPLIED TO THE CABLE ASSEMBLY AND/OR IN CLOSE PROXIMITY OF THE MATED CONNECTOR APPLICATION IN A MANNER THAT PROVIDES SUITABLE WARNING TO THE END USER AND MEETS APPLICABLE LAWS. IT IS THE RESPONSIBILITY OF THE OEM OR MANUFACTURER OF THE PRODUCT IN WHICH THIS CONNECTOR SYSTEM IS USED TO APPLY THE APPROPRIATE HIGH VOLTAGE WARNING LABEL(S) TO THE FINAL PRODUCT. TO THE EXTENT MOLEX IS NOT RESPONSIBLE FOR THE FINAL CABLE ASSEMBLY, MOLEX DISCLAIMS ALL WARRANTIES AND LIABILITY THAT RESULT FROM A FAILURE TO PROVIDE AN APPROPRIATE WARNING.

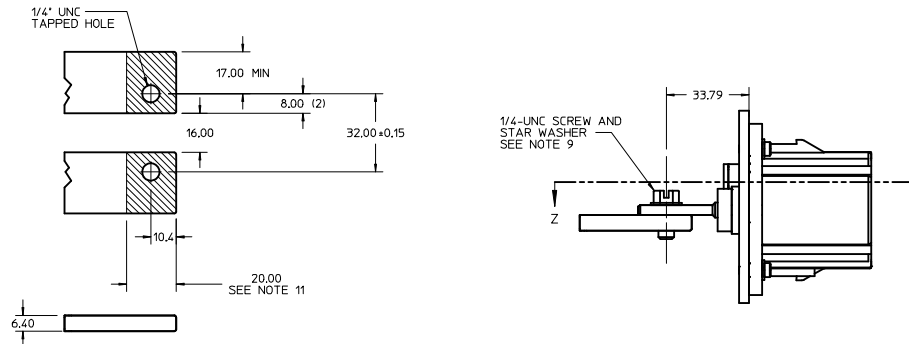
| | | | | | | |
|---|-----------------------|--|-------------------|------------------|---|------------------------|
| REVISED PIN LOCATION IEC NO: UCP2017-1062 DRAWN BY: MDATA CHKD: APPR: APATEL DESCRIPTION: 2016/10/21 | QUALITY SYMBOLS | GENERAL TOLERANCES (UNLESS SPECIFIED) | DIMENSION STYLE | SCALE | DESIGN UNITS | THIRD ANGLE PROJECTION |
| | ▽=0 | mm INCH | MM ONLY | 1:1 | METRIC | ☉ |
| | ▽=0 | 4 PLACES ± --- ± --- | DRAWN BY: MDATA | DATE: 2011/12/08 | TITLE: HEADER ASSY PANEL MOUNT IMPERIUM | MOLEX INCORPORATED |
| | ▽=0 | 3 PLACES ± --- ± --- | CHECKED BY: MDATA | DATE: 2011/12/21 | DOCUMENT NO: SD-171467-1000 | |
| | 2 PLACES ± 0.60 ± --- | APPROVED BY: APATEL | DATE: 2012/04/11 | SIZE: SEE CHART | THIS DRAWING CONTAINS INFORMATION THAT IS PROPRIETARY TO MOLEX INCORPORATED AND SHOULD NOT BE USED WITHOUT WRITTEN PERMISSION | |
| | 1 PLACE ± 0.90 ± --- | DRAFT WHERE APPLICABLE MUST REMAIN WITHIN DIMENSIONS | | | | |



PANEL REQUIREMENTS
SCALE 2:1



SECTION Z-Z
SCALE 4:1



RECOMMENDED BUS BAR DETAIL

| | | | | | | |
|--|-----------------------|--|---------------------|------------------|---|------------------------|
| SEE SHEET 1 IEC NO: UCP2017-1062 DRAWN BY: CHYD APPR: APATEL DATE: 2016/12/21 | QUALITY SYMBOLS | GENERAL TOLERANCES (UNLESS SPECIFIED) | DIMENSION STYLE | SCALE | DESIGN UNITS | THIRD ANGLE PROJECTION |
| | ▽=0 | mm INCH | MM ONLY | 1:1 | METRIC | ☉ |
| | ▽=0 | 4 PLACES ± --- ± --- | DRAWN BY: MDATA | DATE: 2011/12/08 | TITLE: HEADER ASSY PANEL MOUNT IMPERIUM | |
| | ▽=0 | 3 PLACES ± --- ± --- | CHECKED BY: MDATA | DATE: 2011/12/21 | APPROVED BY: APATEL | DATE: 2012/04/11 |
| | 2 PLACES ± 0.60 ± --- | ANGULAR ± 1/2° | APPROVED BY: APATEL | DATE: 2012/04/11 | | |
| | 1 PLACE ± 0.90 ± --- | DRAFT WHERE APPLICABLE MUST REMAIN WITHIN DIMENSIONS | SEE CHART | | | |