

4

3

2

1

THIS DRAWING IS UNPUBLISHED.

RELEASED FOR PUBLICATION

© COPYRIGHT

ALL RIGHTS RESERVED.

LOC DIST

REVISIONS

P	LTR	DESCRIPTION	DATE	DWN	APVD
	A1	ECR-13-001193	22JAN2013	XZ	SX


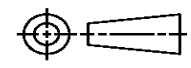
# REPLACED BY OCEAN STYLE APPLICATOR PART NUMBER 2150177-6

FOR REPLACEMENT PARTS FOR APPLICATOR 1911171 REFER TO ADDITIONAL PAGE(S). SPARE PARTS KIT (IF LISTED) WILL REMAIN AVAILABLE.

THE REPLACEMENT OCEAN STYLE APPLICATOR HAS THE SAME TERMINATOR/PRESS INTERFACE AS APPLICATOR 1911171

Dimensioning and tolerancing per ASME Y14.5M-2009

A

THIS DRAWING IS A CONTROLLED DOCUMENT.		DWN X. ZHAO	 TE Connectivity			
DIMENSIONS:		CHK S. XI				
TOLERANCES UNLESS OTHERWISE SPECIFIED:		APVD S. XI	NAME			
		PRODUCT SPEC	END FEED SYSTEM III APPLICATOR			
		APPLICATION SPEC				
MATERIAL	FINISH	WEIGHT	SIZE A3	CAGE CODE	DRAWING NO C-1911171	RESTRICTED TO
		SCALE		SHEET 1 OF 2		REV A1

1470-19 (3/11)

Pr o/ENGINEER DRAWING

Dimensioning and tolerancing per ASME Y14.5M-2009

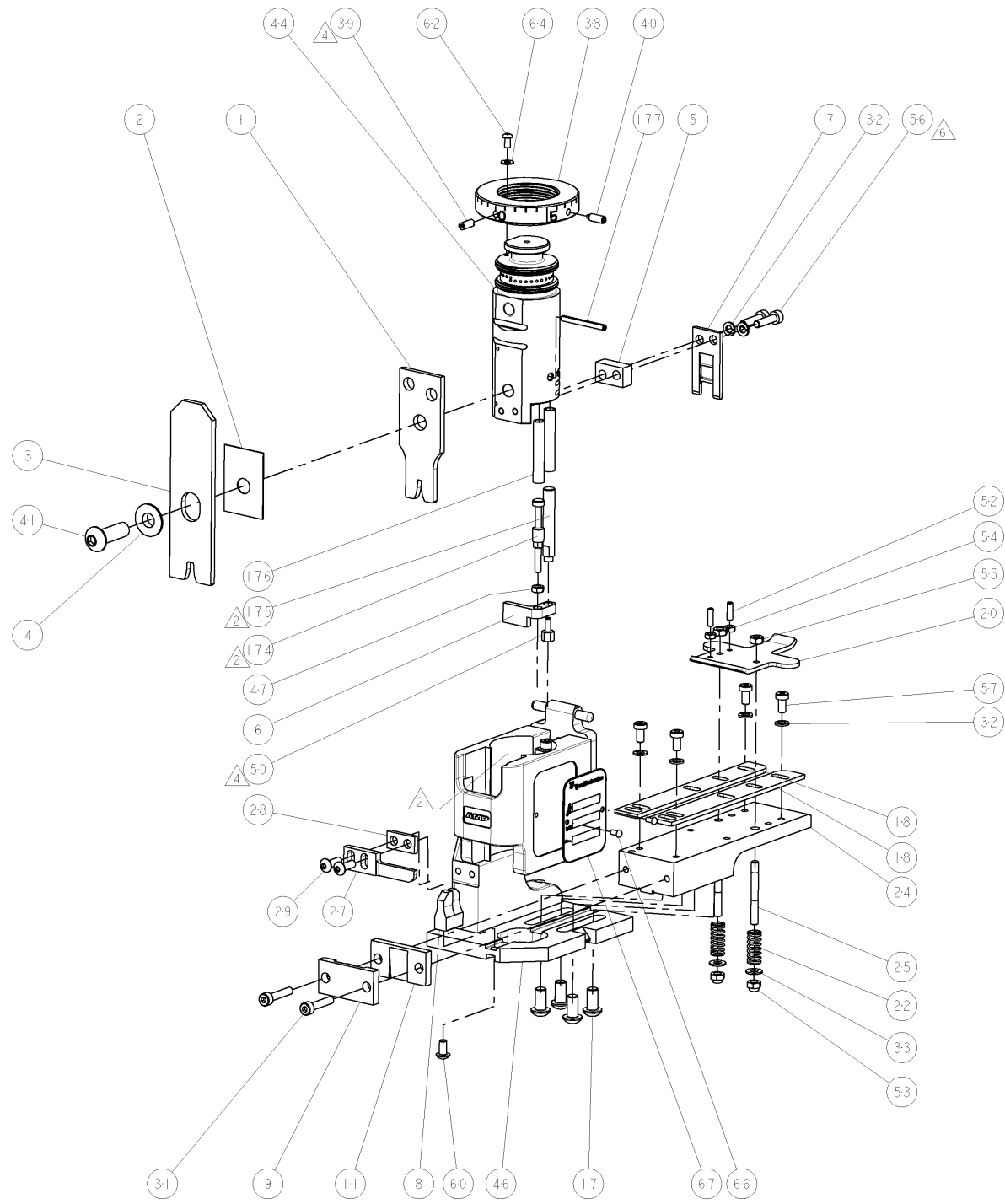
THIS DRAWING IS UNPUBLISHED.		RELEASED FOR PUBLICATION	
COPYRIGHT © BY TYCO ELECTRONICS CORPORATION. ALL RIGHTS RESERVED.			
PART NUMBER	REV	DESCRIPTION	PROGRAMMED MEMORY CHIP
1911171-1	A	S3A APPLICATOR	8-1911171-1
7-1911171-1	A	-1 AND SPARE PARTS	9-1911171-1
7-1911171-7	A	SPARE PARTS KIT	

FEED FINGER 1901697-1	SET UP GAGE 1901068-1	LOC A	DIST 66	REVISIONS				
				REV	DESCRIPTION	DATE	OWN	APPD
				A	RELEASED	23JAN2008	MEH	GB

APPLICATOR DATA		
CRIMP	SIZE	TYPE
WIRE	2.79 [1.10 IN]	F
INSUL	4.57 [1.80 IN]	F
APPL INSTRUCTIONS 408-10136		

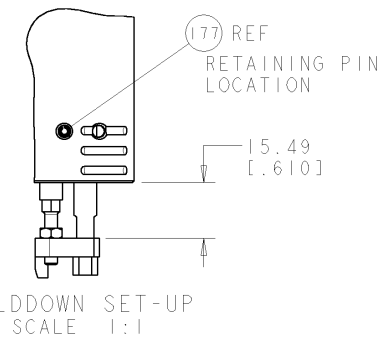
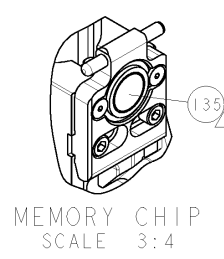
TERMINAL DATA: TE TERMINAL		TYCO ELECTRONICS CRIMP SPEC	
TERMINAL NAME: RECEPTACLE, POSI-LOK, .250 SERIES			
WIRE STRIP LENGTH 4.30-5.10mm [1.72-.203 IN]		INSULATION DIAMETER RANGE 2.29-3.94mm [.090-.155 IN]	
TERMINAL APPL SPEC	114-2074		
TERMINALS APPLIED			
1217094-1	1217094-2	-	-

WIRE SIZE	CRIMP HEIGHT mm [INCH]
14AWG	1.57±.05 [1.062±.002]
16AWG	1.37±.05 [1.054±.002]
18AWG	1.24±.05 [1.049±.002]



-	1	1	1-993111-6	PIN, SLOTTED SPRING 3.0 X 30.0	177
-	2	2	3-22280-7	SPRING, COMPRESSION	176
-	1	1	1752353-1	GUIDE PIN, HOLDDOWN	175
-	1	1	1901680-1	GUIDE PIN, HOLDDOWN	174
REF	REF	REF	SEE TABLE	MEMORY CHIP, PROGRAMMED	135
-	1	1	1633565-2	DOCUMENTATION PACKAGE	71
-	1	1	1901048-1	TAG, IDENTIFICATION	67
-	2	2	21017-2	SCREW, DRIVE	66
-	1	1	18028-1	WASHER, FLAT, REG M3	64
-	1	1	1655785-9	SCR, BTN SKT HD CAP (M3 X 6)	62
-	1	1	1655785-1	SCR, BTN SKT HD CAP (M4 X 8)	60
-	4	4	1655783-2	SCR, CAP, SOC HD, LOW HEAD, M4 X 8	57
-	2	2	1655316-3	SCR, SKT HD CAP, M4 X 16.0	56
-	2	2	18030-2	NUT, HEX, REG M4	55
-	2	2	18030-1	NUT, HEX, REG M3	54
-	2	2	986965-1	NUT, LOCK, HEX, TORQUE (M4)	53
-	2	2	2-18032-2	SCR, SET, FLT POINT M3 X 10.0	52
-	1	1	1752354-5	STANDOFF, HOLD-DOWN	50
-	1	1	1-18030-0	NUT, HEX, REG M3.5	47
-	1	1	1752320-1	EF SYSTEM III APPLICATOR	46
-	1	1	1752308-1	RAM	44
-	1	1	2-1655785-3	SCR, BTN SKT HD CAP (M8 X 25)	41
-	1	1	993002-4	SCREW, SET, SFT TIP	40
-	1	1	1962043-1	PLUNGER, BALL, METRIC	39
-	1	1	1752309-3	RING, INSULATION CRIMP	38
-	2	2	18028-2	WASHER, FLAT, REG M4	33
-	6	6	18026-2	WASHER, SPRG LOCK, REG M4	32
-	2	2	2-1655316-6	SCR, SKT HD CAP, M4 X 20.0	31
-	2	2	1655785-2	SCR, BTN SKT HD CAP (M4 X 12)	29
-	1	1	1-690451-8	SPACER, STRIPPER	28
-	1	1	240639-1	STRIPPER (MACHINING)	27
-	2	2	1320906-1	STUD, THREADED	25
-	1	1	1752371-1	PLATE, STRIP GUIDE	24
-	2	2	22281-7	SPRING, DRAG	22
-	1	1	1752373-1	DRAG	20
-	2	2	1-1901259-0	GUIDE, LOWER STRIP	18
-	4	4	1655785-5	SCR, BTN SKT HD CAP (M6 X 12)	17
-	1	1	240644-1	PLATE, REAR SHEAR	11
-	1	1	690482-4	PLATE, FRONT SHEAR	9
-	1	2	1633386-2	ANVIL, COMBINATION	8
-	1	1	690474-4	BLADE, SLUG	7
-	1	1	1901681-9	HOLDDOWN, TERMINAL	6
-	1	1	2-240641-7	SPACER	5
-	1	1	238009-1	BLOCK, FL CRIMPER SPACER	4
-	1	2	456134-6	CRIMPER, INSULATION F PREMIUM	3
-	1	1	455888-4	SPACER, CRIMPER	2
-	1	2	456408-3	CRIMPER, WIRE PREMIUM	1

- ⊕ RECOMMENDED SPARE PARTS.
- ② GREASE BEARING SURFACES LIGHTLY.
- 3. LUBRICATE DAILY PER THE APPLICATOR INSTRUCTION SHEET SUPPLIED WITH THE APPLICATOR.
- ④ APPLY P/N 1-23419-5 LOCTITE® TO THREADS.
- ⑤ APPLICATOR SPECIFIC DATA TO BE ENTERED INTO BLANK MEMORY CHIP AT ASSEMBLY.
- ⑥ CUT TO LENGTH AT ASSEMBLY.



DIMENSIONS: mm [INCHES]		TOLERANCES UNLESS OTHERWISE SPECIFIED:		TYCO ELECTRONICS Harrisburg, PA 17105-3608	
0 PLC	±	1 PLC	±0.1	NAME	END FEED SYSTEM III APPLICATOR
2 PLC	±0.02	3 PLC	±0.005	SIZE	A   00779   1911171
4 PLC	±0.0005	ANGLES		SCALE	3:5 SHEET 1 OF 1 REV A
MATERIAL		FINISH		CUSTOMER DRAWING	