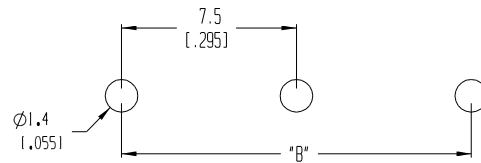


AUX. VIEW
SCALE 3:1

MATERIAL NUMBER	NUMBER OF CIRCUITS "XX"	A		B	
039373-0002	2	14.2	(0.56)	7.50	(1.2951)
039373-0003	3	21.7	(0.85)	15.00	(1.5911)
039373-0004	4	29.2	(1.15)	22.50	(1.8861)
039373-0005	5	36.7	(1.44)	30.00	(1.1811)
039373-0006	6	44.2	(1.74)	37.50	(1.4761)
039373-0007	7	51.7	(2.04)	45.00	(1.7721)
039373-0008	8	59.2	(2.33)	52.50	(2.0671)
039373-0009	9	66.7	(2.63)	60.00	(2.3621)
039373-0010	10	74.2	(2.92)	67.50	(2.6571)
039373-0011	11	81.7	(3.22)	75.00	(2.9531)
039373-0012	12	89.2	(3.51)	82.50	(3.2481)



PTH PATTERN
RECOMMENDED

- NOTES:
- MATERIAL: SEE TABLE
 - FINISHES: SEE TABLE
 - PRODUCT SPECIFICATION: NOT REQUIRED
 - PACKAGING: NOT REQUIRED
 - MATES WITH: 7MM PLUG
 - "XX" - REFERS TO THE NUMBER OF CIRCUIT POSITIONS

ITEM	QTY.	DESCRIPTION	MATERIAL	FINISH
2	XX	PIN	PHOS. BRONZE	TIN-PLATED
1	1	HOUSING	POLYIMIDE	BLACK

EC NO. 3846 DRAWN: CY 09-03-04 CH'K: APPR:	QUALITY SYMBOLS MAJOR: CRITICAL: SPC: S:	GENERAL TOLERANCES: (UNLESS SPECIFIED) mm INCH 4 PLACES ±.0015 3 PLACES ±.038 ±.005 2 PLACES ±.13 ±.01 1 PLACE ±.3	SCALE 5:1 DESIGN UNITS <input type="checkbox"/> mm <input checked="" type="checkbox"/> INCH	THIRD ANGLE PROJECTION 	PROJECT NO. - DIMENSIONS: <input checked="" type="checkbox"/> mm <input type="checkbox"/> INCH <input type="checkbox"/> mm <input type="checkbox"/> ONLY	SHT - REV - REVISE ON CAD ONLY	
	DRAWN BY & DATE W HOWARD 07/21/03	TITLE: 7.5MM RA, HEADER		MOLEX INCORPORATED			
	CHECKED BY & DATE R. KEMP 07/23/03	APPROVED BY & DATE P. WALTZ 07/23/03		CAD FILENAME 3719XX	MATERIAL NO. SEE CHART	DRAWING NO. SD-39373-001	SHEET NO. 1 OF 1
	DRAFT WHERE APPLICABLE MUST REMAIN WITHIN DIMENSIONS			THIS DRAWING CONTAINS INFORMATION THAT IS PROPRIETARY TO MOLEX INCORPORATED AND SHOULD NOT BE USED WITHOUT WRITTEN PERMISSION.			SIZE B