

The Flex Series inclinometer's various output parameters are user-configurable via Flexware.

Description

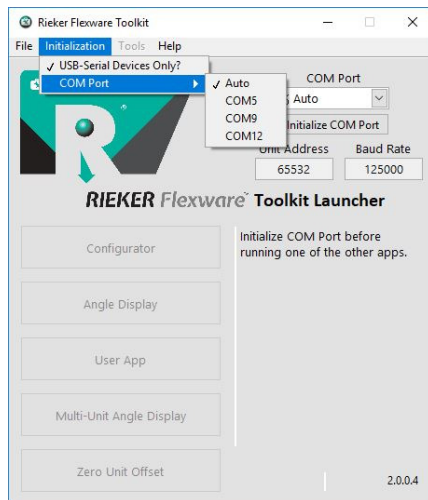
The Flex Series of inclinometers provides various outputs, each available within one all-weather package. The factory calibrated default settings includes the full scale $\pm 180^\circ$ measuring range, with access to the digital RS485, analog voltage, current and open collector switch outputs.

To maximize the flexibility of this revolutionary all-in-one sensor, Rieker designed Flexware™ - an easy to use app that allows end-user configuration of the H6 parameters such as measuring range, preferred output, response rate, switch trip point, and multi-sensor addressing (for daisy-chain and telemetry installations).



What's Configurable

- *Mount Orientation: Horizontal or Vertical*
- *Measuring Range: Scalable within $\pm 180^\circ$*
- *Data Logging*
- *Response Rate*
- *Noise Filtering*
- *Zero Offset*
- *Sensor Address for Multi-Sensor Daisy-Chain and/or Telemetry Installation*
- *Analog Output*
 - *Current (within 0..24mA)*
 - *Voltage (within 0..10VDC)*
 - *Open Collector Switch (window, threshold)*
 - *Output Polarity*
 - *Can be set on a single axis*
- *Digital RS485 Output*
 - *Baud Rate (9600-250K)*



To access and configure the Flex inclinometer, install the Flexware™ Toolkit App, which is provided on the included USB Flash Drive. Connect the USB Interface Cable to the H6, then attach the USB connector to the PC USB port. External power is required, such as an AC/DC 24VDC wall adaptor. The software will detect the sensor, allowing the user to reconfigure the parameters. See the "Flexware™ Software User Guide" for installation and configuration details.

What's Included

- *USB Flash Drive with Flexware™ Toolkit App*
- *USB Interface Cable*

What's Not Included

- *Flex H6 Sensor*
- *Flex Gateway (for telemetry)*
- *AC/DC 24V Wall Mount Adaptor (Digi-Key PN: 102-3575-ND)*

The information and material presented may not be published, broadcast, rewritten, or redistributed without the expressed written consent of Rieker® Inc. The content presented is provided for informational purposes only and subject to change. ©2018 Rieker® Inc. All Rights Reserved. FORM NUMBER: H60017_04/18 UPDATED: 4/27/18

Rieker Rugged. Rieker Reliable.™

RIEKER INC • 34 MOUNT PLEASANT ROAD • ASTON • PA • 19014 • USA

610-500-2000

fax: 610-500-2002

inquiry@riekerinc.com

www.riekerinc.com