



- EP13 SMD Package
- Operating temperature range: -40°C to +125°C

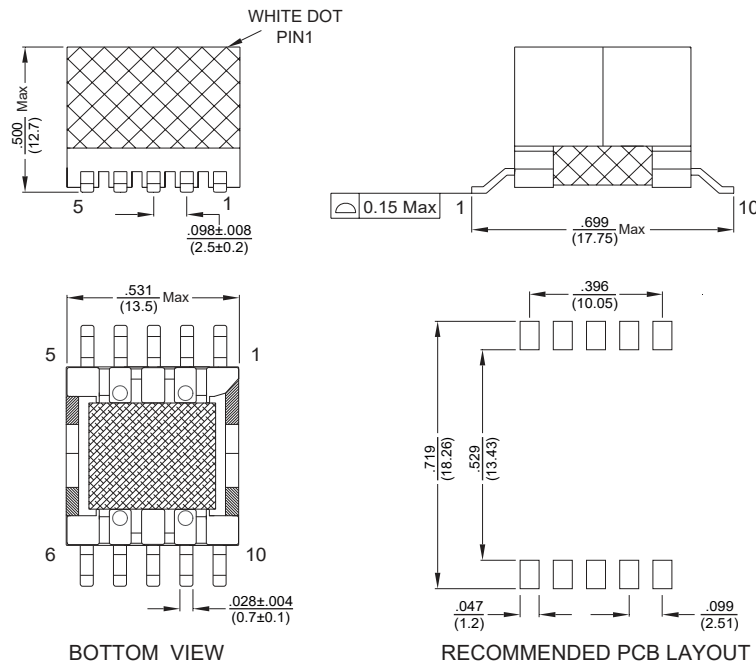
Electrical Specifications @25°C				
Inductance @ 10KHz, 0.1V (3-5)	Inductance @ 10KHz, 0.1V (3-5) @ 5A	Leakage Inductance @ 100KHz, 1.0V (3-5) (Tie: 1,2,6,7,9,10)	Turns Ratio @ 15.75KHz, 1.0V	
			(3-5) : (2-1)	(3-5) : (6,7 - 9,10)
15.0μH±10%	≥80% of L @ 0A	0.3μH Max	1 : 0.83 ±2%	1 : 0.33a ±2%

Electrical Specifications @25°C				
DC RESISTANCE mΩ Max			Hi-Pot	
(3 - 5)	(2 - 1)	(6,7 - 9,10)	1, 3 to 6, 7	1 to 3
42	144.1	7.2	2500VAC/1SEC/2mA	625VAC/1SEC/2mA

All specifications subject to change without notice.

### MECHANICAL

Dimensions:  $\frac{\text{inch}}{\text{mm}}$



### SCHEMATICS

