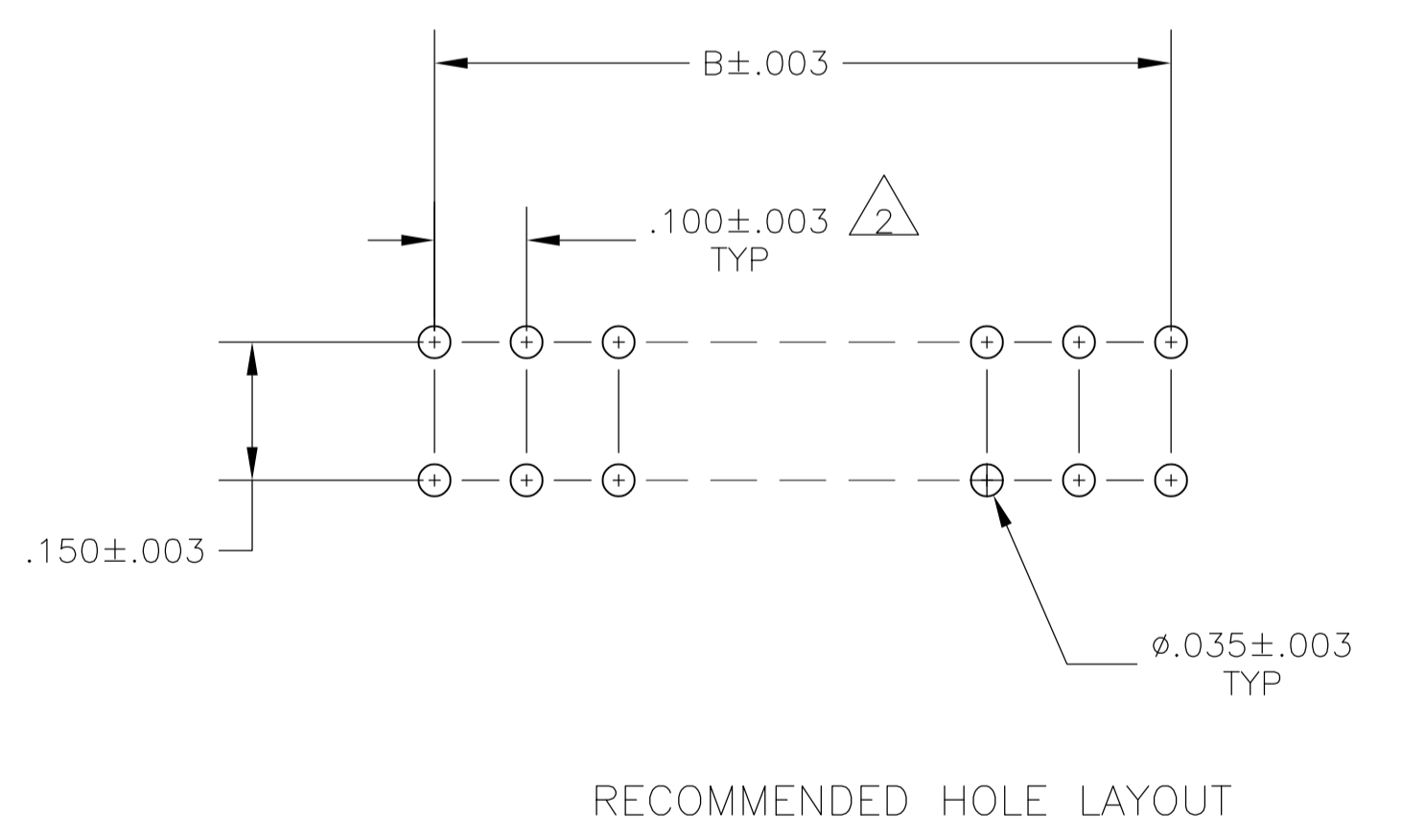
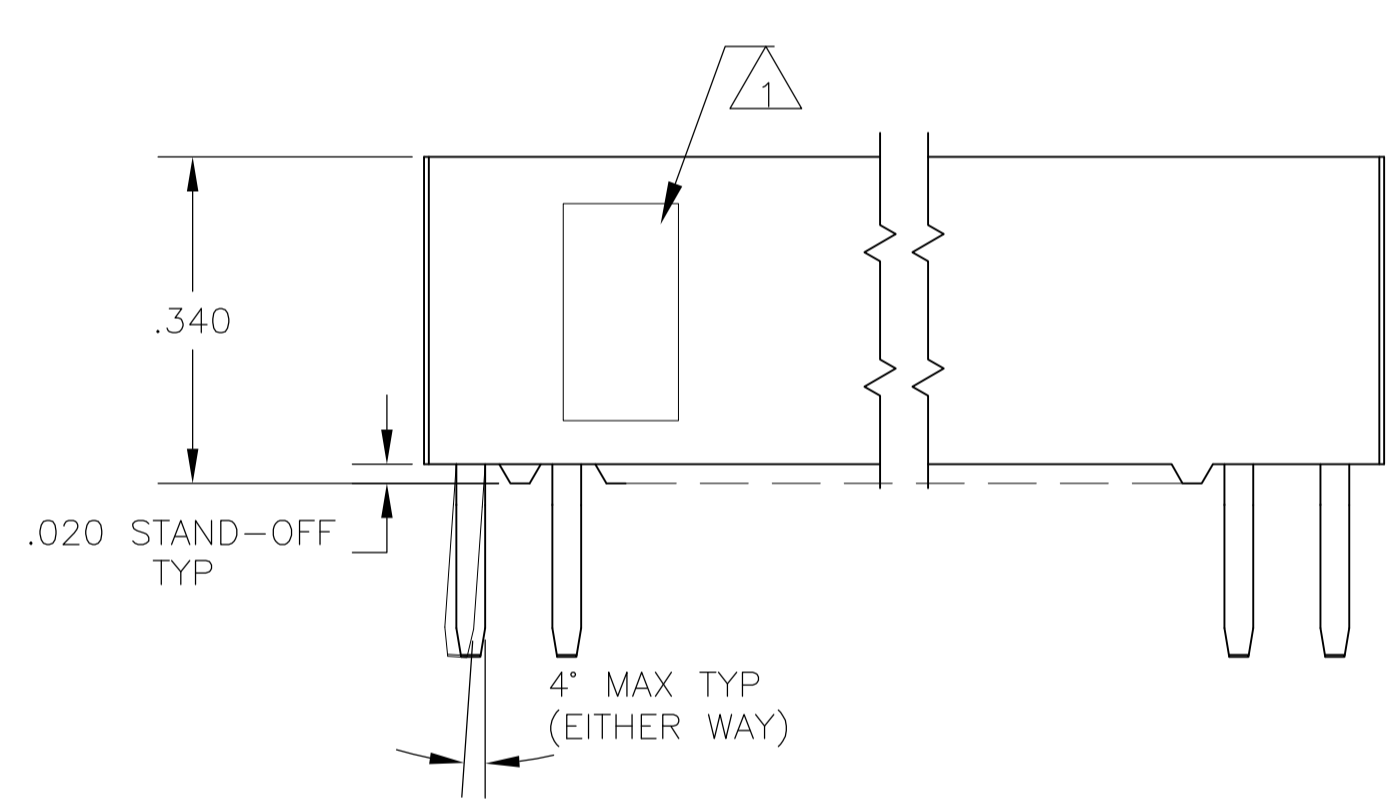
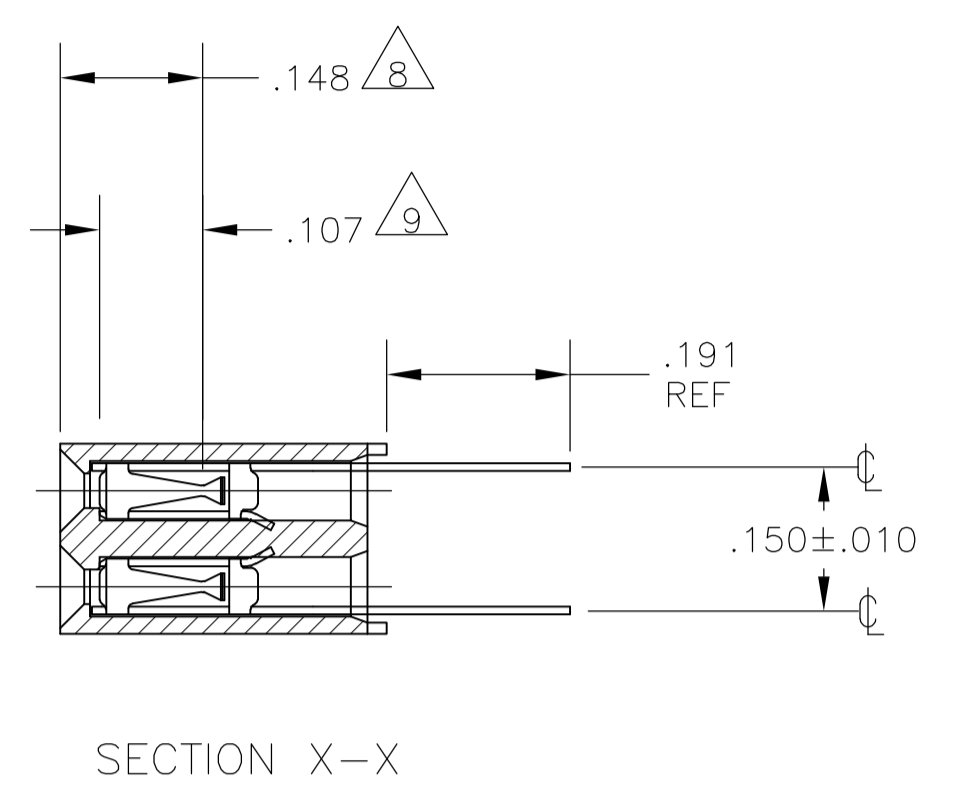
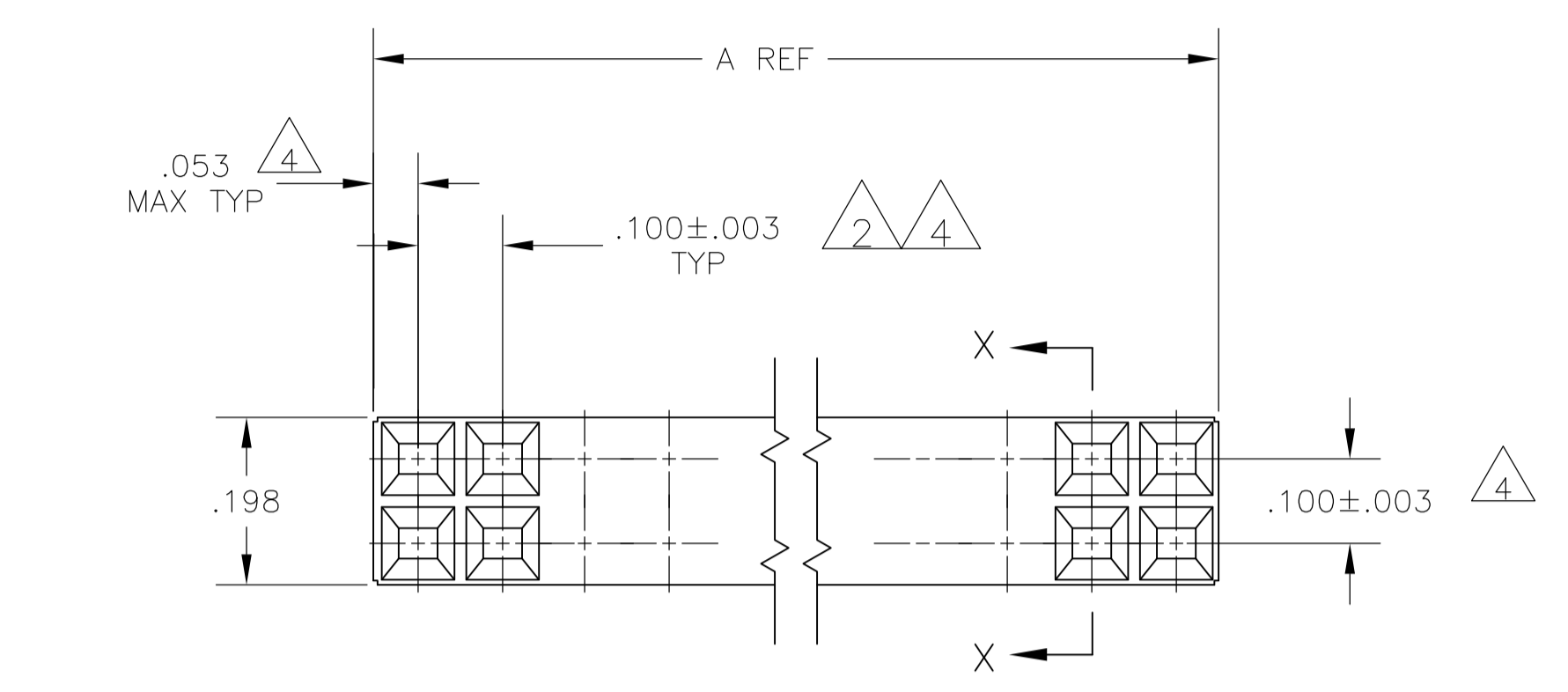


LOC		DIST		REVISIONS			
AD	00	REV	DESCRIPTION	DATE	BY	CHK	APPV
A			REVISED PER 063C-0061-03	07OCT03	MJM	JRO	
A1			REVISED PER ECO-09-024927	06NOV09	KK	AEG	



- 1 TYCO LOGO AND CSA LOGO ARE MOLDED INTO HOUSING
- 2 TOLERANCE NON-CUMULATIVE.
- 3 DUPLEX PLATED: .000030 GOLD IN CONTACT AREA, .000150-.000300 BRIGHT TIN-LEAD ON SOLDER LEADS, ALL OVER .000050 MIN NICKEL.
- 4 THESE DIMENSIONS PERTAIN TO CAVITY CENTERLINES ONLY. NOT TO CONTACT LOCATIONS.
- 6. PACKAGED IN SINGLE TUBES.
- 7 HOUSING: FLAME RETARDANT GLASS FILLED POLYESTER COLOR-BLACK, CONTACT: PHOS. BRONZE
- 8 POINT OF CONTACT DIMENSION.
- 9 POINT OF MEASUREMENT DIMENSION FOR PLATING THICKNESS (INSIDE CONTACT BEAMS).
- 10 DATE CODE AND PART NUMBER ARE MARKED IN APPROXIMATE LOCATION SHOWN
- 11 DUPLEX PLATED: .000030 GOLD IN CONTACT AREA, .000150-.000300 MATTE TIN ON SOLDER LEADS, ALL OVER .000050 MINIMUM NICKEL
- 12 ROHS 2002/95/EC COMPLIANT
- 13 OBSOLETE PARTS: OBSOLETE CIS STREAMLINING PER D.RENAUD/D.SINISI

13, 12	OBSOLETE	11	3.200	3.100	64	<del>5-147065-1</del>
		3	3.200	3.100	64	147065-1
FINISH	A	B	NUMBER OF POSITIONS	PART NUMBER		

THIS DRAWING IS A CONTROLLED DOCUMENT.

DIMENSIONS: INCHES	TOLERANCES UNLESS OTHERWISE SPECIFIED:	DIN J.HERRINGTON 09FEB98	Tyco Electronics Corporation Harrisburg, Pa 17105-3608
0. PLC ± -	1. PLC ± -	CHK J.HERRINGTON 09FEB98	
2. PLC ± -	3. PLC ± -	APVD J.HERRINGTON 09FEB98	NAME ASSEMBLY, MOD II DOUBLE ROW, .100 X .100
4. PLC ± -	ANGLES ± -	PRODUCT SPEC	APPLICATION SPEC
MATERIAL	FINISH	SIZE	CAGE CODE
7	3, 11	A1	00779
CUSTOMER DRAWING		SCALE 5:1	SHEET 1 OF 1