

The **EVAL-MICCANVASZ** Microphone Canvas Evaluation Board

FEATURES

15 MEMS microphones

- Level-matched to within ± 1 dB for accurate beam steering
- Symmetrically arranged to create flexible array patterns

14 microphone indicator LEDs

- Can be used to indicate beam direction, microphone activity, direction of incident sound, or other functions

8 LEDs in a bar graph meter orientation

Seamless operation as a daughter card for **EVAL-ADAU1467Z**

- Can be used with other processors via either two TDM8 or one TDM16 serial audio interface for the microphones and an SPI-compatible serial interface for the LEDs

DOCUMENTS NEEDED

- ADAU1463** or **ADAU1467** data sheet
- EVAL-ADAU1467Z** user guide

SOFTWARE NEEDED

- SigmaStudio** software

GENERAL DESCRIPTION

The EVAL-MICCANVASZ microphone canvas provides a platform for the development and evaluation of microphone beamforming arrays. 15 microphones, arranged as a ring of eight, a ring of six, and a single in the center, provide flexibility and symmetry suitable to many applications (see Figure 1).

EVALUATION BOARD PHOTOGRAPH

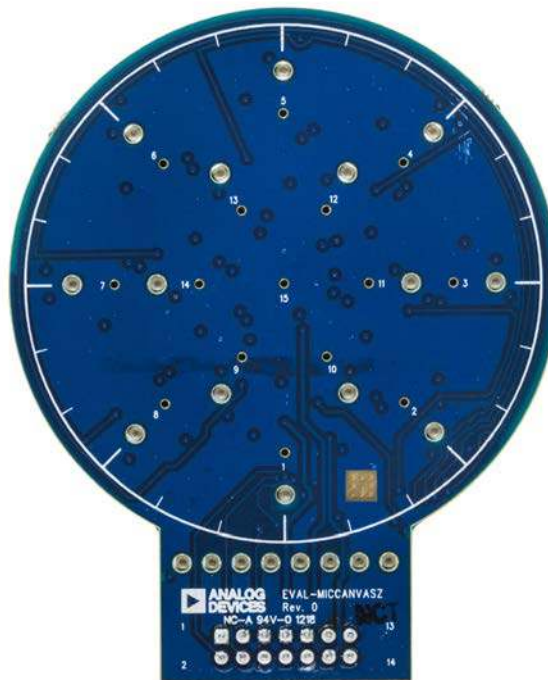


Figure 1.

16827-001

TABLE OF CONTENTS

Features	1	Locating and Configuring the LED Drivers	4
Documents Needed.....	1	Interfacing the Microphone Canvas to the EVAL-ADAU1467Z	5
Software Needed	1	Using EVAL-MICCANVASZ in TDM16 Mode.....	5
General Description	1	Microphone Inputs on the EVAL-ADAU1467Z	6
Evaluation Board Photograph.....	1	Driving the LEDs with the EVAL-ADAU1467Z	6
Revision History	2	Using the Bar Graph Meter	6
Evaluation Board Hardware.....	3	Microphone Use for Beamforming Applications.....	8
Installation into the EVAL-ADAU1467Z.....	3	Evaluation Board Schematics and Artwork.....	9
Setting Switches on the EVAL-ADAU1467Z.....	3	Ordering Information.....	18
Software Configuration	4	Bill of Materials.....	18
Installing SigmaStudio	4		

REVISION HISTORY

11/2018—Revision 0: Initial Version

EVALUATION BOARD HARDWARE

INSTALLATION INTO THE **EVAL-ADAU1467Z**

The microphone canvas comes with one nylon screw and one nylon standoff. These are used to support the cantilevered weight of the board and avoid contact with test points on the **EVAL-ADAU1467Z**. To install the **EVAL-ADAU1467Z**, take the following steps:

1. Insert the screw up from the bottom of the board through-hole (SC3).
2. Thread the standoff tightly onto the screw hand.
3. Insert the microphone canvas board into Header J5 such that it rests on the nylon standoff.

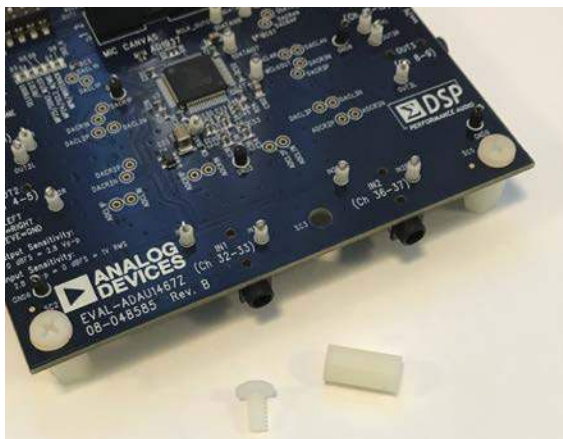


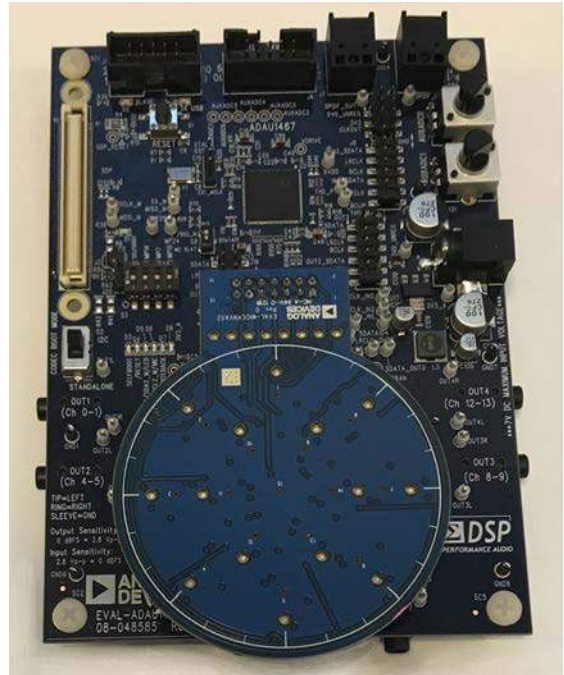
Figure 2. Nylon Screw and Standoff

16827-002



Figure 3. Nylon Screw and Standoff Fitted in Place

16827-003



16827-004

Figure 4. Microphone Canvas Installed

SETTING SWITCHES ON THE **EVAL-ADAU1467Z**

On the **EVAL-ADAU1467Z**, ensure that the S2 switch is set to **STANDALONE** (down position) and that the S8 switch is set to **MC XLAT** (down position).

SOFTWARE CONFIGURATION

INSTALLING SigmaStudio

The programming environment for the ADAU1467 is SigmaStudio®. This graphical tool suite is available as a free download on the Analog Devices, Inc., website. The instructions for downloading and installing SigmaStudio are available in the EVAL-ADAU1467Z user guide.

LOCATING AND CONFIGURING THE LED DRIVERS

The brightness of each of the light emitting diodes (LEDs) is controlled by a dedicated pulse width modulation (PWM) controller on the microphone canvas. The drivers for this controller are available for download at www.analog.com/EVAL-MICCANVAS.

There are two blocks in the in the LEDs folder in the nesting list, as shown in Figure 5. The LED PWM Controller block controls the brightness of each of the LEDs. The bar graph meter simplifies use of LEDs D15 to D22 as an audio level meter.

The LED PWM controller block uses the MPxx pins to communicate with the controlled IC. MP16, MP17, MP18, MP19, MP24, and MP25 must be configured as shown in Figure 6. These settings can be found under the **Hardware Configuration > Multipurpose1** tab. Additional functionality of each of these pins is detailed in Table 1.

The blocks shown in Figure 5 appear in the SigmaStudio tree toolbox.

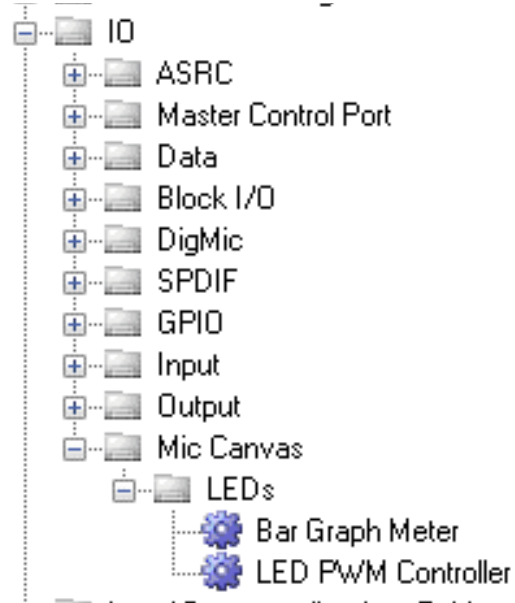


Figure 5. Toolbox Blocks for LED Control



Figure 6. MPxx Pin Configuration in SigmaStudio

INTERFACING THE MICROPHONE CANVAS TO THE **EVAL-ADAU1467Z**

The EVAL-MICCANVASZ evaluation board is used as a daughter card for the [EVAL-ADAU1467Z](#) evaluation board with the [ADAU1467](#) SigmaDSP processor, controlling the microphone canvas. The connector includes provisions to power and stream the audio inputs from the 15 microphones, and also has dedicated pins and software to control the brightness of the LEDs. The functions of these pins are detailed in Table 1.

The audio interface uses Serial Input Port 1. The audio data uses two data pins, SDATA_IN1 and SDATAIO1, each in TDM8 format. Power to the microphones can be turned on and off with the digital signal processor (DSP).

The brightness of each of the 22 LEDs can be controlled independently using a PWM controller on the microphone canvas. This controller has a flexible serial interface. A software block is provided that implements this serial interface using only four multipurpose pins. This controller block provides an abstraction layer that allows control of the LEDs within the audio signal flow of a [SigmaStudio](#) project.

USING EVAL-MICCANVASZ IN TDM16 MODE

By default, the EVAL-MICCANVASZ evaluation board is configured to work seamlessly with the [EVAL-ADAU1467Z](#) evaluation board using two data lines, each configured in TDM8 mode. However, the board can also be configured to use a single data line in TDM16 mode by making minor adjustments to the printed circuit board (PCB). To configure the board for operation in TDM16 mode,

1. Move Resistor R4 to the unpopulated site, R5. R4 is a 0 Ω jumper. Leave R4 unpopulated. R5 can be bridged with any piece of wire.
2. Move Resistor R7 to the unpopulated site, R6. R7 is a 0 Ω jumper. Leave R7 unpopulated. R6 can be bridged with any piece of wire.
3. Remove Resistor R3 and leave the site unpopulated.

With these modifications, the required frame synchronization signal remains the same, the required bit clock changes from 12.288 MHz (TDM8 at 48 kHz) to 24.576 MHz (TDM16 at 48 kHz), and the data output rate doubles to match the bit clock.

Table 1. ADAU1467 Pins Used to Control Microphone Canvas

Microphone Canvas Connection	ADAU1467 Pin	Function	Comments
Microphone Power	SLC2_M/MP24	Powers the microphones	Assert SLC2_M/MP24 low to power the microphones
Microphone Bit Clock	BCLK_IN1	12.288 MHz, delayed by 1	Serial Input Port 1
Microphone Frame Synchronization	LRCLK_IN1/MP11	48 kHz, noninverted pulse	Serial Input Port 1
Microphone TDM8 Channel 0 to Channel 7	SDATA_IN1	Audio data, TDM8 format, 24-bit data, 32 bits per word	Serial Input Port 1 in TDM16 over 2 mode
Microphone TDM8 Channel 8 to Channel 15	SDATAIO1/MP17	Audio data, TDM8 format, 24-bit data, 32 bits per word	Serial Input Port 1 in TDM16 over 2 mode
Microphone TDM16 Channel 0 to Channel 15	SDATA_IN1	Audio data, TDM16 format, 24-bit data, 32 bits per word	Serial Input Port 1 in TDM16
SDATAIO1/MP17	SDATAIO1	Not applicable	Not applicable
LED Controller Blanking	SDA2_M/MP25	Enables PWM control of the LEDs	Assert SDA2_M/MP25 low to enable the use of the LED PWM controller
LED Controller XLAT	SDATAIO0/MP16	PWM controller latch input	S8 selects an alternate function for this pin
LED Controller SDATA	SDATAIO3/MP19	PWM controller data input	
LED Controller SCLK	SDATAIO2/MP18	PWM controller clock input	

MICROPHONE INPUTS ON THE EVAL-ADAU1467Z

The microphone canvas uses microphones that output audio in time division multiplexed (TDM) format, which eliminates the need for decimator interfaces, as are required with pulse density modulation (PDM) output microphones. Use of TDM format also eliminates the need for analog-to-digital converters (ADCs), as are required with analog output microphones.

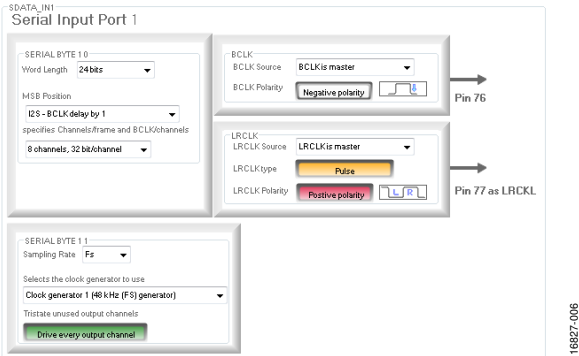


Figure 7. Serial Input Port 1 Configuration

Each of the 15 microphones outputs appear as 24-bit data, left aligned in 32-bit words with I²S framing on Channel 0 through Channel 14 of Serial Input Port 1 of the SigmaDSP. TDM8 format is used, rather than TDM16 format, to reduce the required bit clock rate. An SDATAIOx pin is used to input a second data stream without requiring a second serial port. Configure Serial Input Port 1 and SDATAIO1 in SigmaStudio, as shown in Figure 7 and Figure 8. See the Using EVAL-MICCANVASZ in TDM16 Mode section for information on operating using a single audio data line.

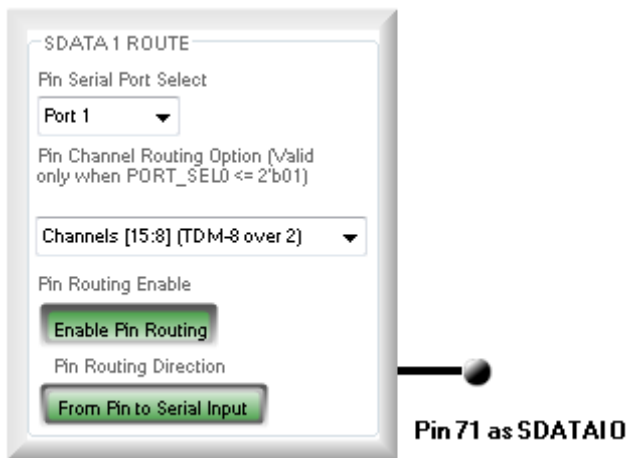


Figure 8. SDATAIO1 Pin Configuration

DRIVING THE LEDs WITH THE EVAL-ADAU1467Z

The LED PWM controller block provides a graphical interface to the hardware PWM controller, as shown in Figure 9. The top eight inputs correspond to LEDs D15 to D22, which make up the bar graph meter adjacent to the microphone canvas connector. The remaining 14 pins correspond to the LEDs adjacent to the rings of blue LEDs adjacent to the microphones. Each input provides control over the brightness of an LED. Ensure that the brightness is in the range 0.0 to (1.0 – 1 LSB).

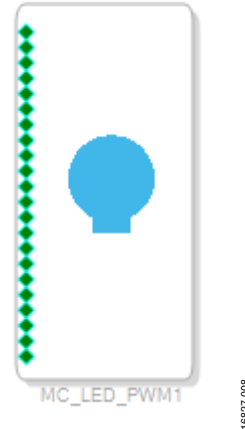


Figure 9. LED PWM Controller Block

USING THE BAR GRAPH METER

The bar graph meter block shown in Figure 10 provides a means of implementing a common audio level meter.

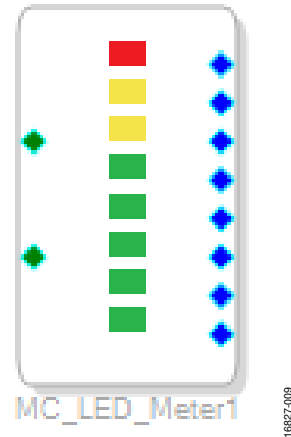


Figure 10. Bar Graph Meter Block

The top input accepts any standard audio signal. The bottom input provides control over the brightness of the meter. Ensure that the brightness is in the range 0.0 to (1.0 – 1 LSB).

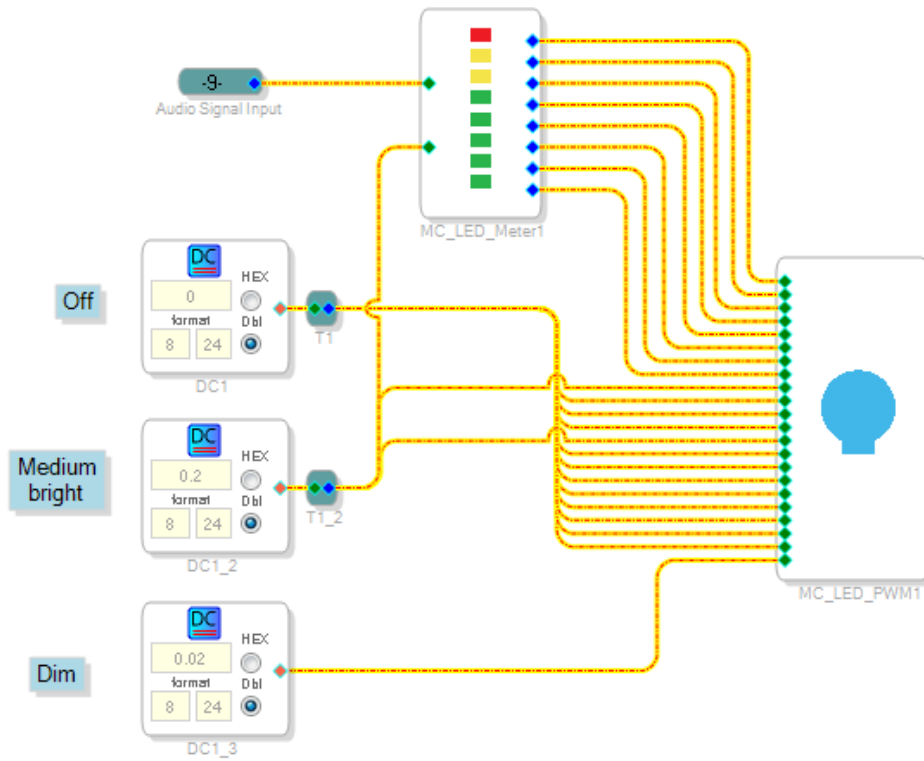


Figure 11. Example LED Control SigmaStudio Schematic

16827-020

MICROPHONE USE FOR BEAMFORMING APPLICATIONS

Beamforming applications require precise spacing and level calibration of the microphones in the array. The microphone array on the microphone canvas consists of an outer ring of eight microphones placed in a circle with diameter of 40 mm, a concentric inner ring of six microphones placed in a circle with diameter of 20 mm, and a single microphone in the center.

This arrangement provides symmetry for steering a virtual microphone beam around a circle and a selection of angles for evaluating microphone spacing and orientation.

Figure 12 shows examples of useful microphone spacing and angles.

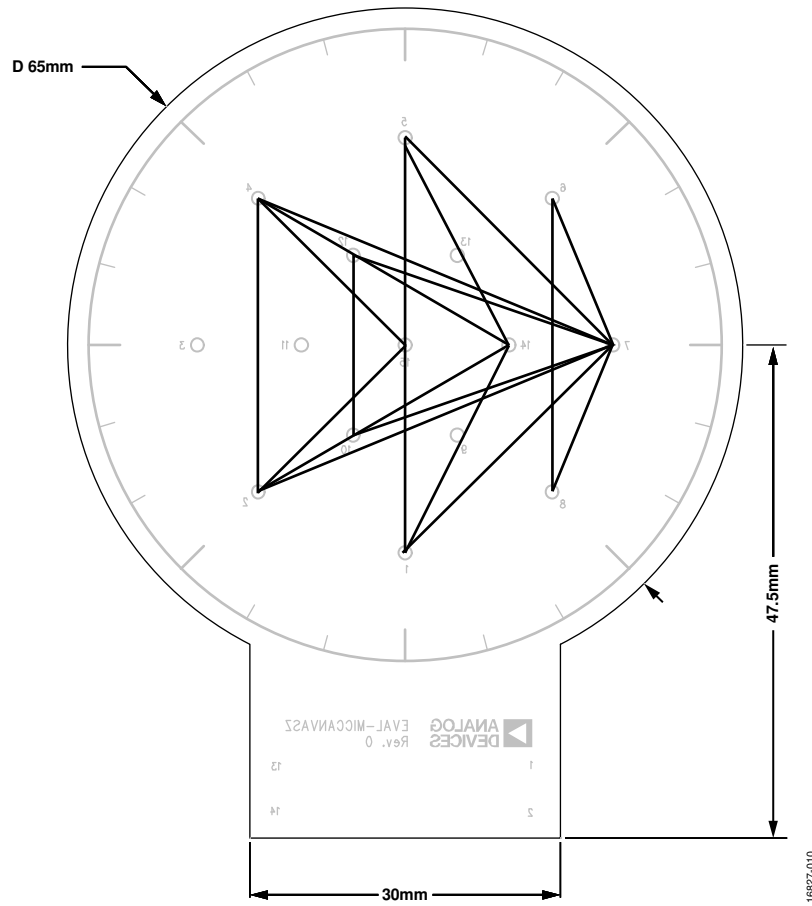


Figure 12. Example 3-Microphone Combinations

EVALUATION BOARD SCHEMATICS AND ARTWORK

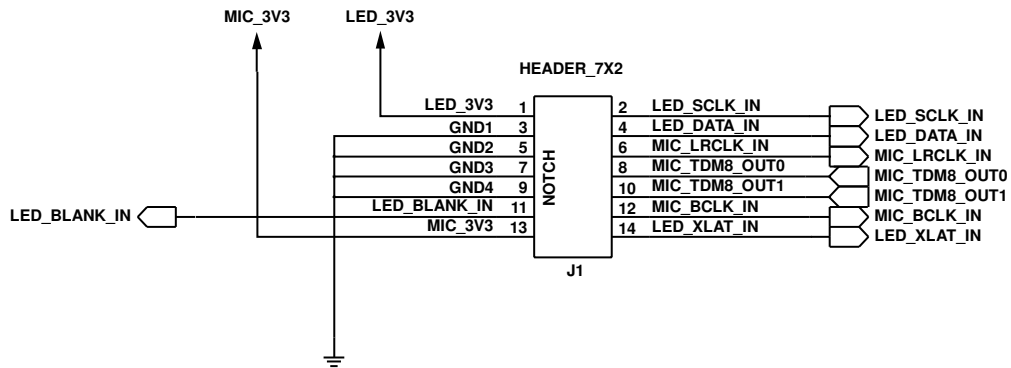


Figure 13. Connector Schematics

16827-011

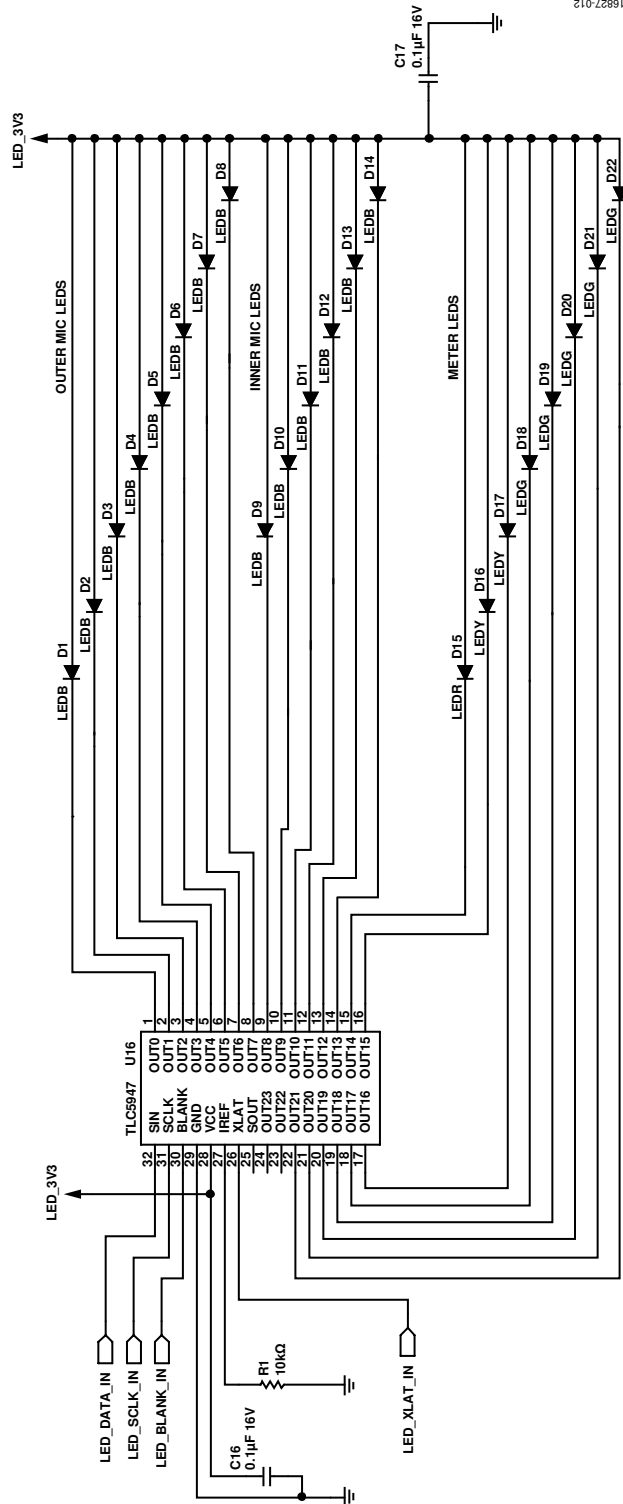
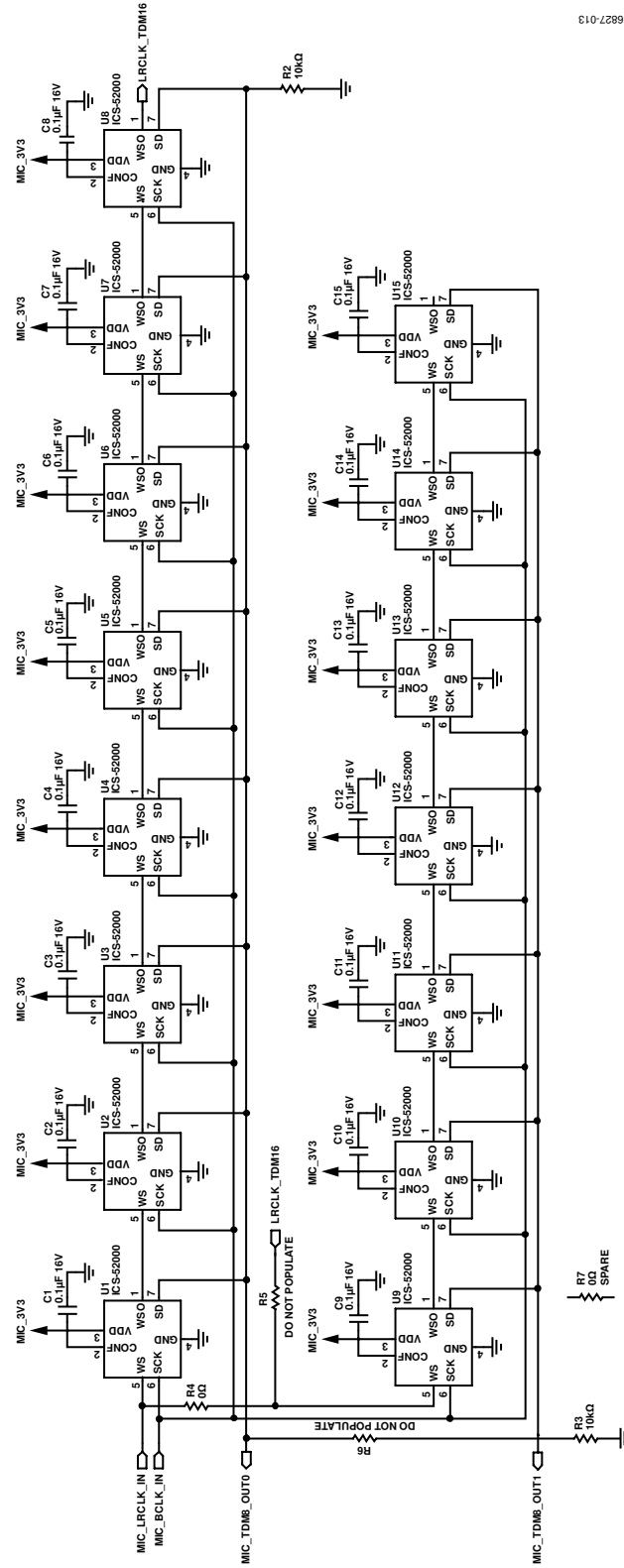


Figure 14. LED Schematics



16927-013

Figure 15. Microphone Schematics

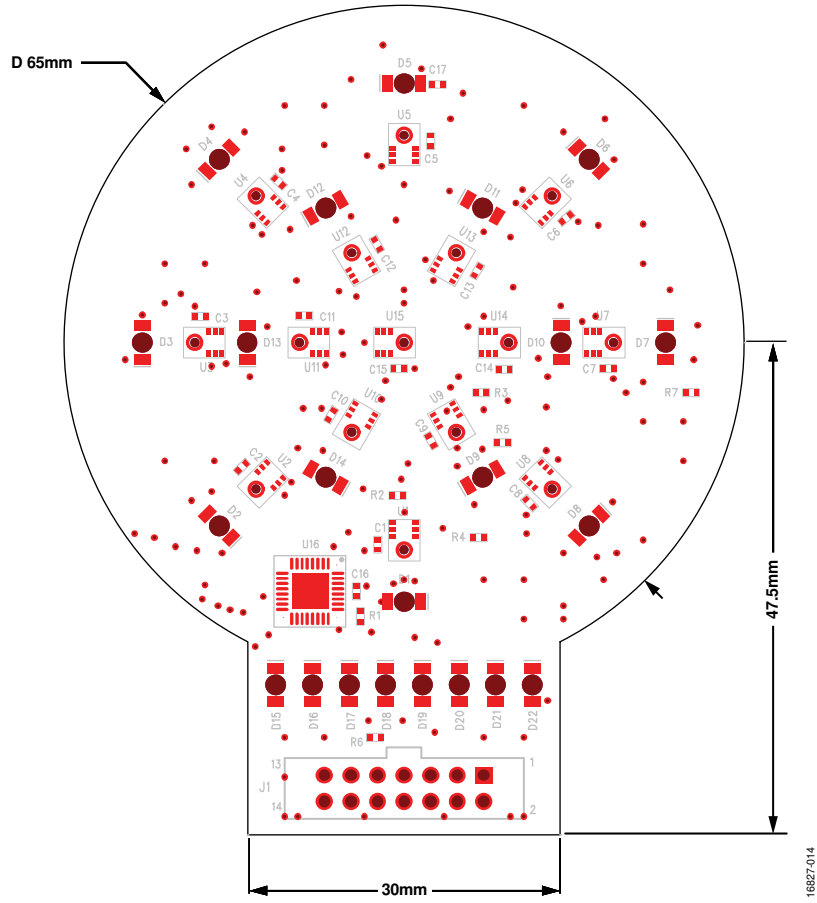
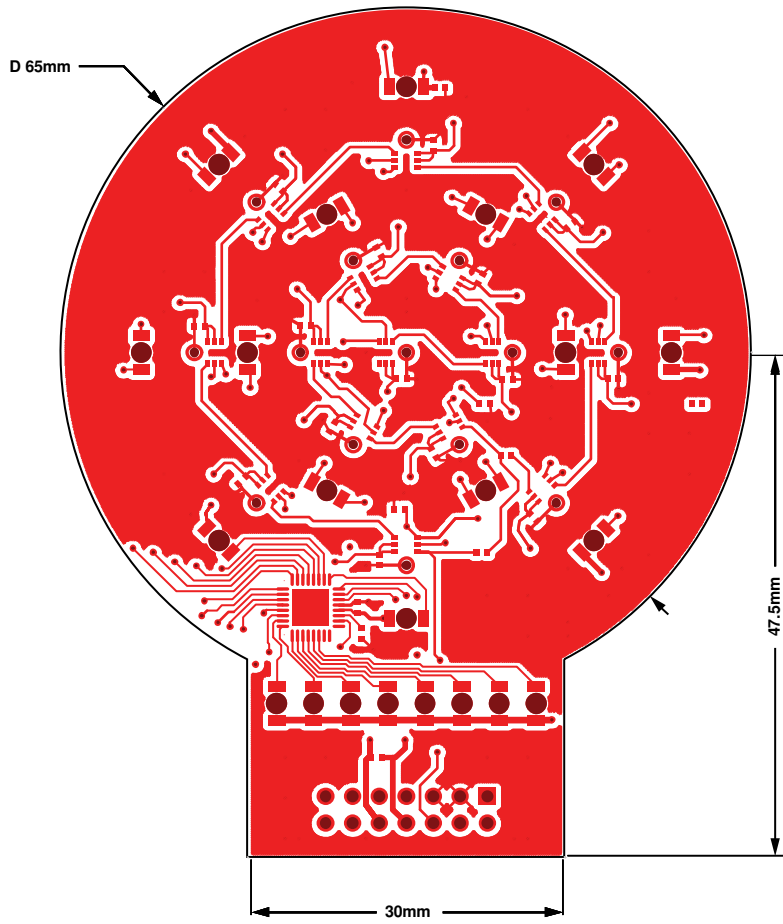


Figure 16. Top Layer Assembly and Silkscreen



18827-015

Figure 17. Layer 1 (Copper)

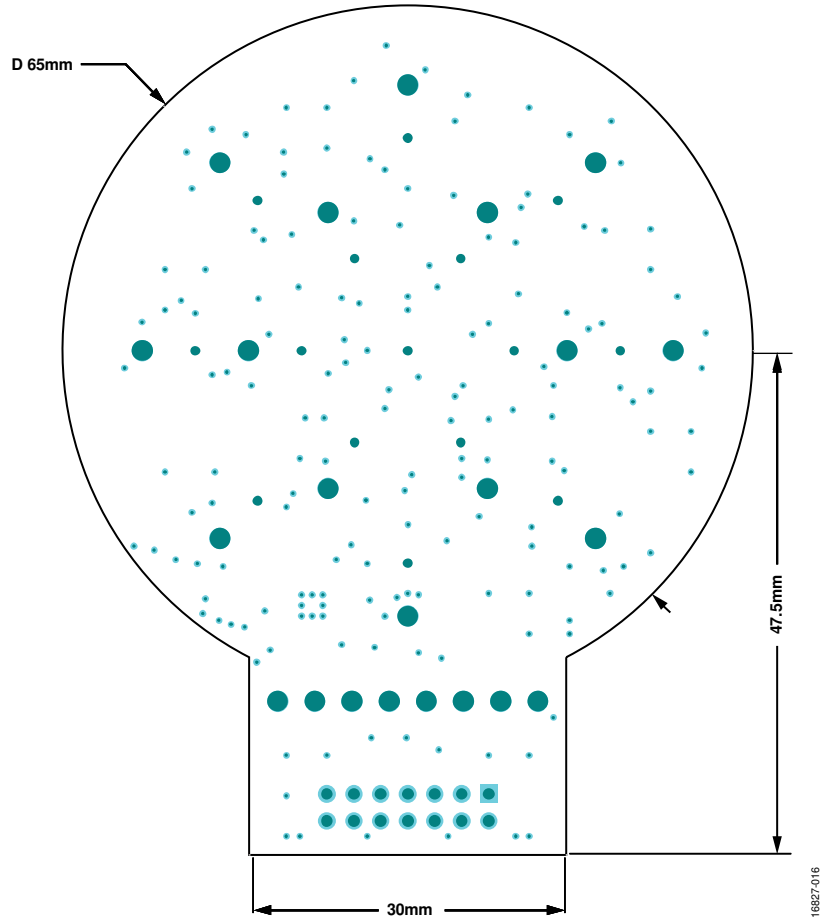


Figure 18. Layer 2 (Ground)

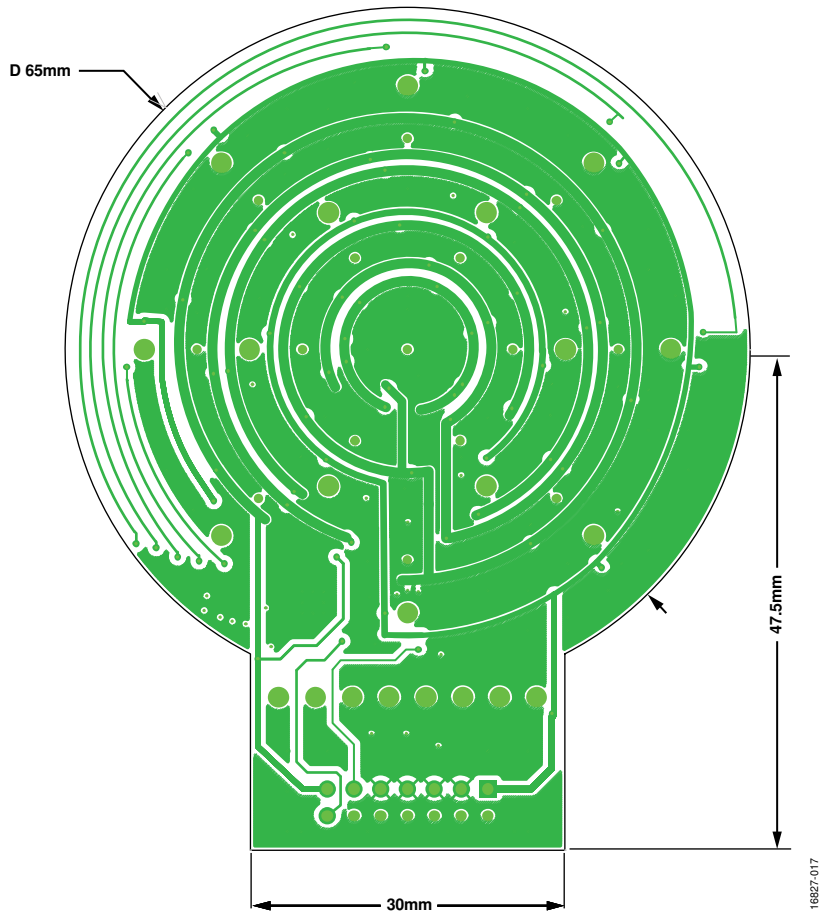


Figure 19. Layer 3 (Copper)

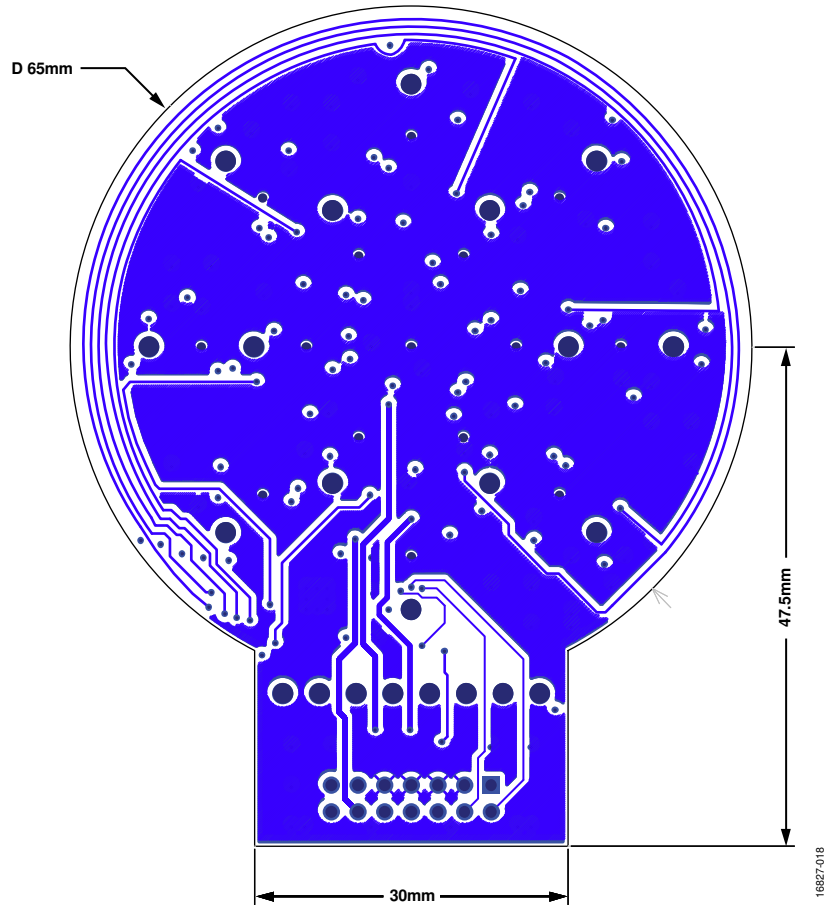


Figure 20. Layer 4 (Copper)

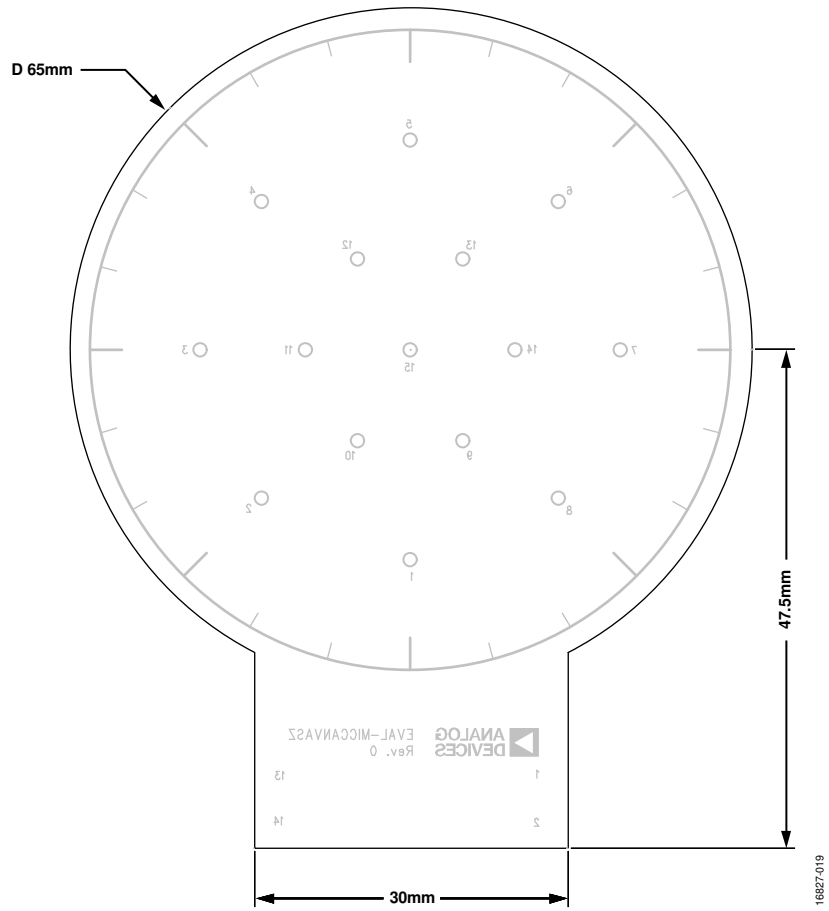


Figure 21. Bottom Silkscreen (View from Top)

ORDERING INFORMATION

BILL OF MATERIALS

Table 2.

Item	Quantity	Reference Designator	Description	Manufacturer	Part Number
1	15	U1 to U15	Microelectro mechanical systems (MEMS) microphones	TDK InvenSys	ICS-52000
2	1	U16	PWM LED Driver IC	Texas Instruments	TLC5947
3	17	C1 to C17	0.1 μ F, 16 V, 10%, ceramic capacitors	TDK	CGA2B1X7R1C104K050BC
4	14	D1 to D14	Blue, bottom mount, LEDs	Dialight	597-6601-607F
5	1	D15	Red, bottom mount, LED	Dialight	597-6001-607F
6	2	D16, D17	Yellow, bottom mount, LEDs	Dialight	597-6401-607F
7	5	D18 to D22	Green, bottom mount, LEDs	Dialight	597-6301-607F
8	3	R1 to R3	10 k Ω , 1%, resistors	Yageo	RC0402FR-0710KL
9	2	R4, R7	0 Ω , resistors (jumpers)	Panasonic	ERJ-2GE0R00X



ESD Caution

ESD (electrostatic discharge) sensitive device. Charged devices and circuit boards can discharge without detection. Although this product features patented or proprietary protection circuitry, damage may occur on devices subjected to high energy ESD. Therefore, proper ESD precautions should be taken to avoid performance degradation or loss of functionality.

Legal Terms and Conditions

By using the evaluation board discussed herein (together with any tools, components documentation or support materials, the "Evaluation Board"), you are agreeing to be bound by the terms and conditions set forth below ("Agreement") unless you have purchased the Evaluation Board, in which case the Analog Devices Standard Terms and Conditions of Sale shall govern. Do not use the Evaluation Board until you have read and agreed to the Agreement. Your use of the Evaluation Board shall signify your acceptance of the Agreement. This Agreement is made by and between you ("Customer") and Analog Devices, Inc. ("ADI"), with its principal place of business at One Technology Way, Norwood, MA 02062, USA. Subject to the terms and conditions of the Agreement, ADI hereby grants to Customer a free, limited, personal, temporary, non-exclusive, non-sublicensable, non-transferable license to use the Evaluation Board FOR EVALUATION PURPOSES ONLY. Customer understands and agrees that the Evaluation Board is provided for the sole and exclusive purpose referenced above, and agrees not to use the Evaluation Board for any other purpose. Furthermore, the license granted is expressly made subject to the following additional limitations: Customer shall not (i) rent, lease, display, sell, transfer, assign, sublicense, or distribute the Evaluation Board; and (ii) permit any Third Party to access the Evaluation Board. As used herein, the term "Third Party" includes any entity other than ADI, Customer, their employees, affiliates and in-house consultants. The Evaluation Board is NOT sold to Customer; all rights not expressly granted herein, including ownership of the Evaluation Board, are reserved by ADI. CONFIDENTIALITY. This Agreement and the Evaluation Board shall all be considered the confidential and proprietary information of ADI. Customer may not disclose or transfer any portion of the Evaluation Board to any other party for any reason. Upon discontinuation of use of the Evaluation Board or termination of this Agreement, Customer agrees to promptly return the Evaluation Board to ADI. ADDITIONAL RESTRICTIONS. Customer may not disassemble, decompile or reverse engineer chips on the Evaluation Board. Customer shall inform ADI of any occurred damages or any modifications or alterations it makes to the Evaluation Board, including but not limited to soldering or any other activity that affects the material content of the Evaluation Board. Modifications to the Evaluation Board must comply with applicable law, including but not limited to the RoHS Directive. TERMINATION. ADI may terminate this Agreement at any time upon giving written notice to Customer. Customer agrees to return to ADI the Evaluation Board at that time. LIMITATION OF LIABILITY. THE EVALUATION BOARD PROVIDED HEREUNDER IS PROVIDED "AS IS" AND ADI MAKES NO WARRANTIES OR REPRESENTATIONS OF ANY KIND WITH RESPECT TO IT. ADI SPECIFICALLY DISCLAIMS ANY REPRESENTATIONS, ENDORSEMENTS, GUARANTEES, OR WARRANTIES, EXPRESS OR IMPLIED, RELATED TO THE EVALUATION BOARD INCLUDING, BUT NOT LIMITED TO, THE IMPLIED WARRANTY OF MERCHANTABILITY, TITLE, FITNESS FOR A PARTICULAR PURPOSE OR NON-INFRINGEMENT OF INTELLECTUAL PROPERTY RIGHTS. IN NO EVENT WILL ADI AND ITS LICENSORS BE LIABLE FOR ANY INCIDENTAL, SPECIAL, INDIRECT, OR CONSEQUENTIAL DAMAGES RESULTING FROM CUSTOMER'S POSSESSION OR USE OF THE EVALUATION BOARD, INCLUDING BUT NOT LIMITED TO LOST PROFITS, DELAY COSTS, LABOR COSTS OR LOSS OF GOODWILL. ADI'S TOTAL LIABILITY FROM ANY AND ALL CAUSES SHALL BE LIMITED TO THE AMOUNT OF ONE HUNDRED US DOLLARS (\$100.00). EXPORT. Customer agrees that it will not directly or indirectly export the Evaluation Board to another country, and that it will comply with all applicable United States federal laws and regulations relating to exports. GOVERNING LAW. This Agreement shall be governed by and construed in accordance with the substantive laws of the Commonwealth of Massachusetts (excluding conflict of law rules). Any legal action regarding this Agreement will be heard in the state or federal courts having jurisdiction in Suffolk County, Massachusetts, and Customer hereby submits to the personal jurisdiction and venue of such courts. The United Nations Convention on Contracts for the International Sale of Goods shall not apply to this Agreement and is expressly disclaimed.