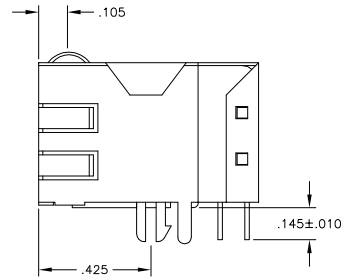
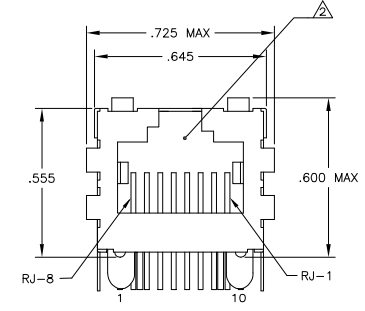
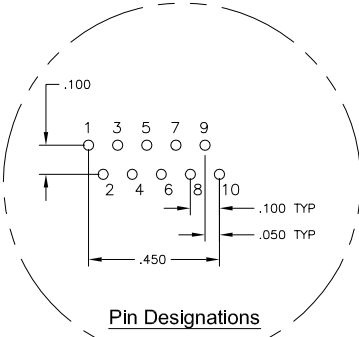
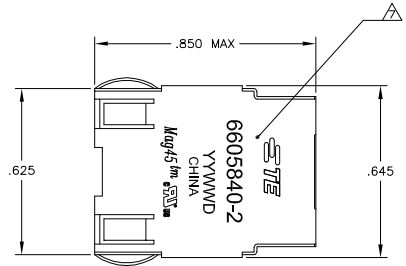
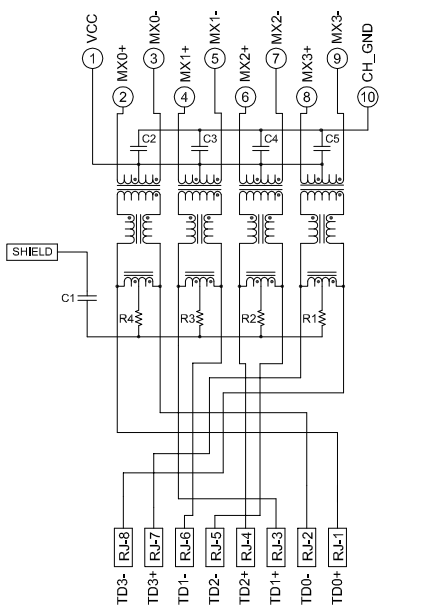


LOC	DATE	REVISIONS	DATE	BY	APP
AA	22				
B	ECO-08-031922		10DEC2008	VL	LR
C	ECO-11-013915		30MAY2011	EL	LR

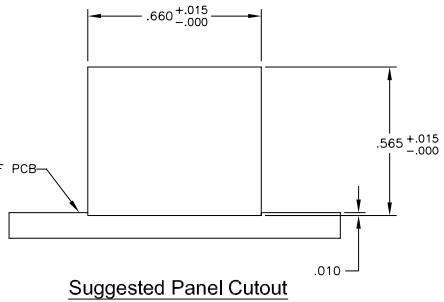
MECHANICAL:



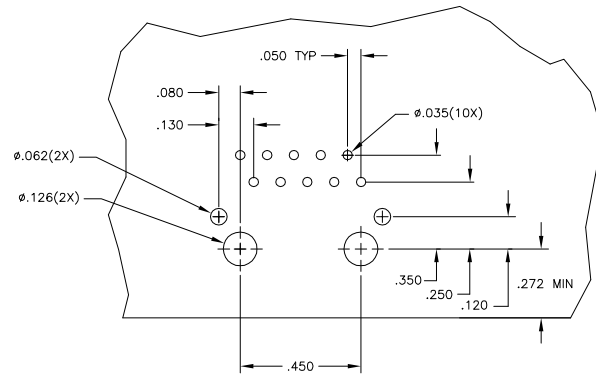
ELECTRICAL:
7G05P1 GIGABIT MAGNETIC CIRCUIT



C1 = 1000pF, 2kV DECOUPLING CAPACITOR
R1-R4 = 75 OHMS, 1/16 W RESISTORS
C2-C5 = 0.1 uF, 10%, 50V CAPACITORS



Suggested PCB Layout
(Component Side)



- MATERIALS:**
 - HOUSING - THERMOPLASTIC PET POLYESTER FLAMMABILITY RATING UL 94V-0.
 - SHIELD - .010" THICK, C26800 BRASS PREPLATED WITH 30µINCH MIN SEMI-BRIGHT NICKEL; SOLDER TABS POST DIPPED WITH 100µINCH MIN SAC SOLDER.
 - MOD JACK CONTACTS - .0157" x .018" THICK, PHOSPHOR BRONZE, 50µINCH MIN OVERALL NICKEL UNDERPLATE, WITH SELECT 50µINCH MIN HARD GOLD FINISH PLATE. SOLDER TAILS WITH 100µINCH MIN MATTE TIN AND/OR SAC SOLDER DIP.
- RJ45 JACK CAVITY CONFORMS TO FCC RULES AND REGULATIONS PART 68, SUB PART F.
- MAGNETICS**
 - APPLICATION: 10/100/1000 BASE-T
 - IMPEDANCE: 100 OHMS
 - TURNS RATIO (CHIP CABLE): 1:1 ALL FOUR PAIRS
 - OPEN CIRCUIT INDUCTANCE (OCL): 350uH MIN @100kHz, 0.1VRMS, 8mADC BIAS FROM 0°C TO 70°C, ALL FOUR PAIRS
 - ALL FOUR PAIRS BI-DIRECTIONAL
 - PERFORMANCE @ 25°C:
 - INSERTION LOSS (IL): 11dB MAX FROM 0.5MHz TO 100MHz
 - RETURN LOSS (RL): 18dB MIN FROM 0.5MHz TO 40MHz
 - 12-20LOG(f/80)dB MIN FROM 4.01MHz TO 100MHz
 - CROSSTALK ATTENUATION: 35dB MIN FROM 0.5MHz TO 40MHz
 - 33-20LOG(f/50)dB MIN FROM 4.01MHz TO 100MHz
 - COMMON MODE REJECTION RATIO (CMRR): 30dB MIN FROM 0.5MHz TO 100MHz
 - ISOLATION VOLTAGE: 225VDC (MAX) FOR 60 SECONDS WITH A RISE TIME OF 500V/SEC.
- OPERATING TEMPERATURE: FROM 0° C TO +70° C.
- ALL DIMENSIONS NOMINAL UNLESS OTHERWISE NOTED.
- INDICATED CONNECTIONS ARE FOR NIC CONFIGURATION. THE MAGNETICS ARE SYMMETRICAL, AND THEREFORE ARE AUTO-MD/MDIX CAPABLE.
- TE CONNECTIVITY LOGO, PART NUMBER, DATE CODE, COUNTRY OF ORIGIN AND AGENCY APPROVAL MARKING IN APPROXIMATE LOCATION SHOWN.
- THE PART IS RECOMMENDED FOR WAVE SOLDERING PROCESS, PREHEAT TEMPERATURE IS 120°C TO 160°C, 120 SECONDS TO 180 SECONDS, PEAK WAVE SOLDERING TEMPERATURE IS 260°C MAX, 10 SECONDS MAX.

6605840-2
PART NUMBER

THIS DRAWING IS A CONTROLLED DOCUMENT.		REV: GRZYBOWSKI	OLJAN003	TE Connectivity		
DIMENSIONS: INCHES		REV: GRZYBOWSKI	OLJAN003	1X1 MAG45(TM), 704P1 (10 PIN HORIZONTAL) SCHEMATIC, 7G05P1 GIGABIT MAGNETIC CIRCUIT, SHIELDED, WITH DECOUPLING CAPACITOR, NO LEADS		
0 P.C. ± - 1 P.C. ± - 2 P.C. ± .010 3 P.C. ± .008 4 P.C. ± - 5 P.C. ± -		108-2100 APPLICATION SPEC	SIZE: A1 DATE CODE: 00779 DRAWING NO: C-6605840	RESTRICTED TO: - SCALE: NTS SHEET: 1 of 1 REV: C	CUSTOMER DRAWING	