

PRODUCT NUMBER

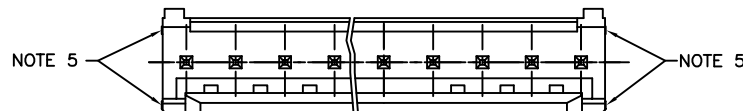
73324-YXXLF

PLATING, SEE TABLE

LEAD FREE OPTION
SEE NOTE 6

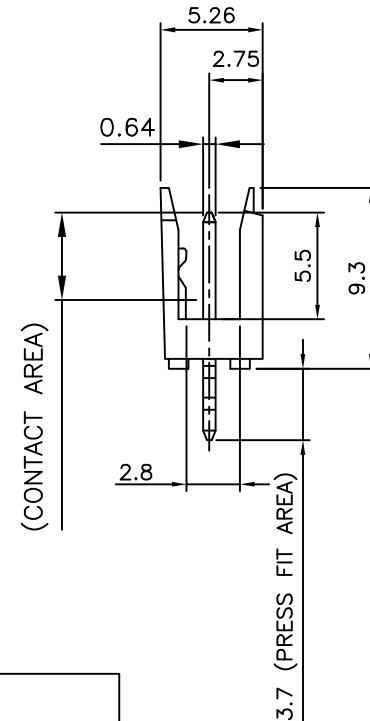
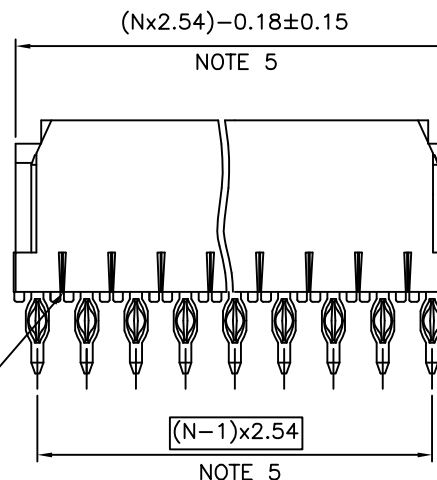
TOTAL NB OF POS

TOP VIEW



NOTES:

- 1 - MATERIAL HOUSING: THERMOPLASTIC POLYESTER 30% GLASS FILLED COLOUR BLUE, FLAME RETARDANT PER UL-94 CATEGORY V0.
- 2 - MATERIAL PIN: COPPER ALLOY.
- 3 - MIN PUSH OUT FORCE TERMINAL : 15N
- 4 - MAX PROTUSION 0.3 MAX IN 4 PLACES. IN BOTH DIRECTIONS.
- 5 - TO DETERMINE DIMENSIONS :
N = NUMBER OF POSITIONS PER ROW
EXAMPLE : 8 POS PER ROW, N x 2.54 = 20.32mm
- 6 - "LF" MEANS THAT THE PRODUCT IS RoHS COMPLIANT THEN MEETS EUROPEAN UNION DIRECTIVES AND OTHER COUNTRY REGULATION AS DESCRIBED IN GS-47-0004

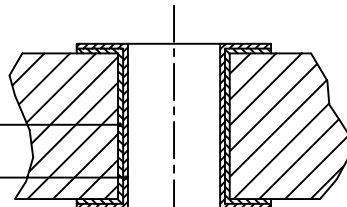


THERE IS NO NECESSARY A GROOVE IN EVERY POSITION ON THIS SIDE.

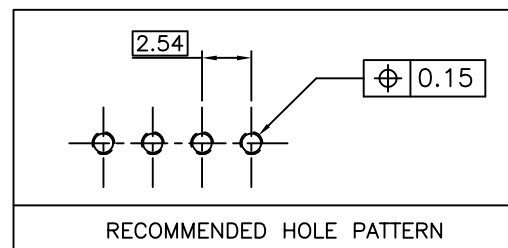
DRILLED HOLE $\phi 1.15 \pm 0.025$ DIA.

COPPER PLATING 0.025 MIN. 0.075 MAX.

TIN/LEAD PLATING 0.005 MIN. 0.015 MAX.



FINISHED HOLE $\phi 0.94$ MIN. $\phi 1.09$ MAX.



RECOMMENDED HOLE PATTERN

73324-3XXLF	0.76 μ m Au/GXT	1.0 μ m MATTE TIN
PLATING CODE	CONTACT AREA	PRESSFIT TAIL AREA
	PLATING THICKNESS OVER 1.27 μ m Ni MIN	

mat'l. code SEE NOTES		surface ISO 1302	tolerance ISO 406 ISO 1101	projection 	product family DUBOX HDR
ltr	ecn no	dr	date	tolerances unless otherwise specified	title
H	B-19286	AMA	14.11.03	angles	PRESS FIT SINGLE ROW
J	F-21810	AMA	15.06.19	linear	scale 1/3
D	F20102	DLE	02.01.09	dr	P NIZZI 97.06.19
E	F06-0228	LMU	06.07.11	engr	JM PHAMVAN 97.06.19
F	F06-0298	LMU	06.10.18	chr	P NIZZI 97.06.19
G	F08-0147	YOY	08.04.14	appd	JMP 97.06.19
sheet index	revision sheet				

dwg no 73324 sheet 1 of 1 size A3
type CUSTOMER Drawing