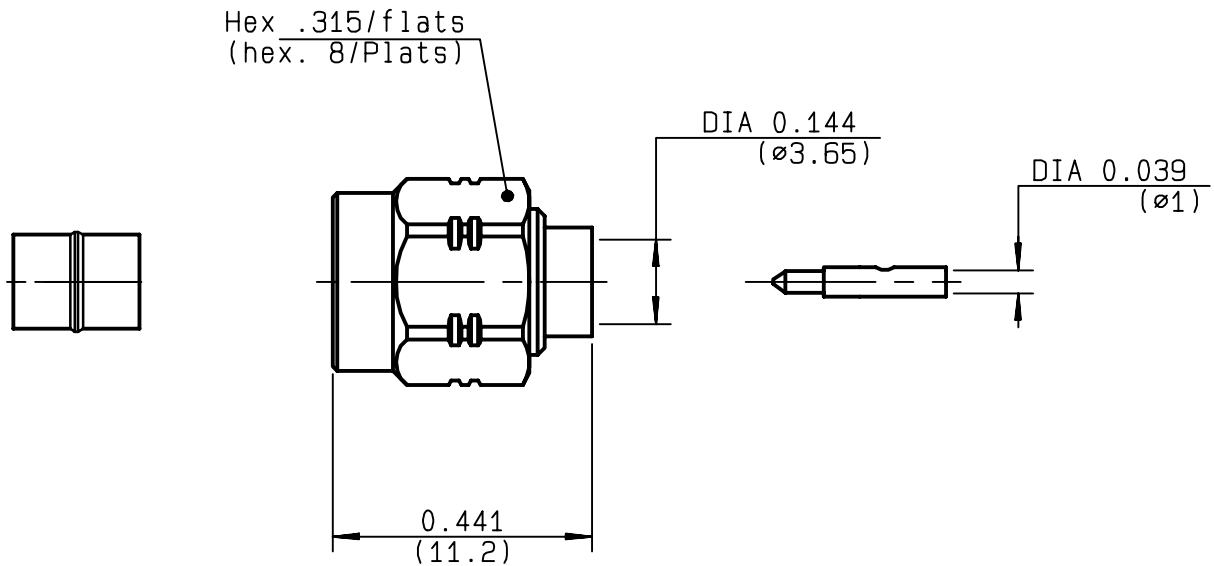


**STRAIGHT PLUG SOLDER TYPE  
CABLE .141**

**R124.055.003**  
**SERIES SMA-COM**



|                                 |                                       |   |
|---------------------------------|---------------------------------------|---|
| NOMINAL IMPEDANCE               | <b>50</b> Ω                           | CABLES : <b>KS 2</b>                        |
| FREQUENCY RANGE                 | <b>0-18</b> GHz                       | <b>RG 402</b>                               |
| TEMPERATURE RATING              | <b>-65/+105</b> °C                    |   |
| V.S.W.R                         | <b>1.05</b> + <b>.01</b> x F(GHz)Maxi |   |
| RF INSERTION LOSS               | <b>0.05</b> √F(GHz) dB Maxi           |   |
| VOLTAGE RATING                  | <b>500</b> Veff Maxi                  |   |
| DIELECTRIC WITHSTANDING VOLTAGE | <b>1000</b> Veff Mini                 |   |
| INSULATION RESISTANCE           | <b>5000</b> MΩMini                    | OTHERS CHARACTERISTICS                      |
| HERMETIC SEAL                   | <b>NA</b> Atm.cm <sup>3</sup> /s      | CABLE RETENTION <b>270</b> N Mini           |
| LEAKAGE (pressurized only)      | <b>NA</b>                             | CENTER CONTACT RETENTION                    |
| MECHANICAL DURABILITY           | <b>100</b> Cycles                     | Axial force - mating end <b>NA</b> N Mini   |
| WEIGHT                          | <b>2.3</b> gr                         | Axial force - opposite end <b>NA</b> N Mini |
| SPECIFICATION                   |                                       | Torque <b>NA</b> cm.N Mini                  |
|                                 |                                       | RECOMMENDED TORQUES                         |
|                                 |                                       | Mating <b>60</b> cm.N                       |
|                                 |                                       | Panel nut <b>NA</b> cm.N                    |
|                                 |                                       | Clamp nut <b>NA</b> cm.N                    |

| CONNECTOR PARTS | MATERIALS       | FINISH (all values are given in micrometers) |
|-----------------|-----------------|--|
| BODY            | STAINLESS STEEL | GOLD 0.2 OVER NICKEL 2                       |
| OUTER CONTACT   |                 |  |
| CENTER CONTACT  | BRASS           | GOLD 1.3 OVER COPPER 2.5                     |
| INSULATOR       | PTFE            | -  |
| GASKET          | SILICONE RUBBER | -  |
| OTHERS PIECES   | BRASS           | GOLD 0.2 OVER NICKEL 2                       |

|                |                   |                    |
|----------------|-------------------|--------------------|
| ISSUE          | CREATION DATE     | FILE PART-NUMBER   |
| <b>9901B00</b> | <b>16/07/1996</b> | <b>96-1200-061</b> |



**RADIALL**®

TRIQUES

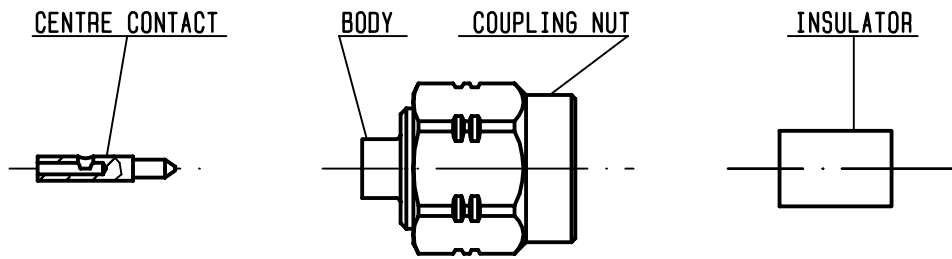
The information given here is subject to change without notice.  
Design changes may be in order to improve the product .

*Connect to the future*



**R124.055.003**

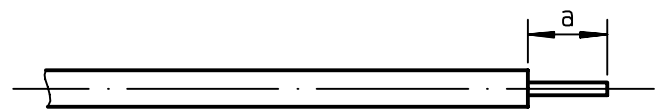
ISSUE 9901B00 SERIES SMA-COM



We recommend a cable thermal preconditioning before assembling

①

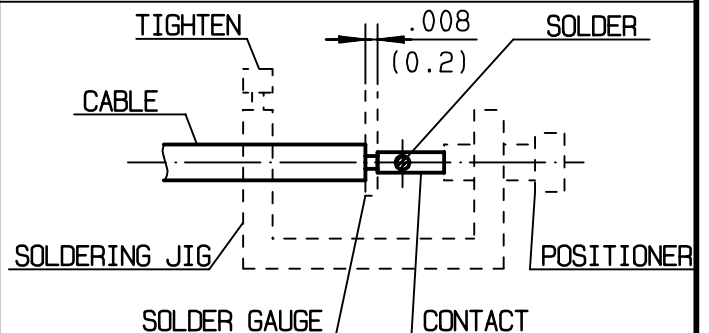
Strip the dielectric of the cable .  
 Stripping tool cable : R 282 053 000.  
 Trimmer : R 282 067 000 .  
 Clean the cable .  
 -



| Stripping | a       | b | c | d | e |
|-----------|---------|---|---|---|---|
| inch      | 0.125 0 | 0 | 0 | 0 | 0 |
| mm        | 3.17    |   |   |   |   |

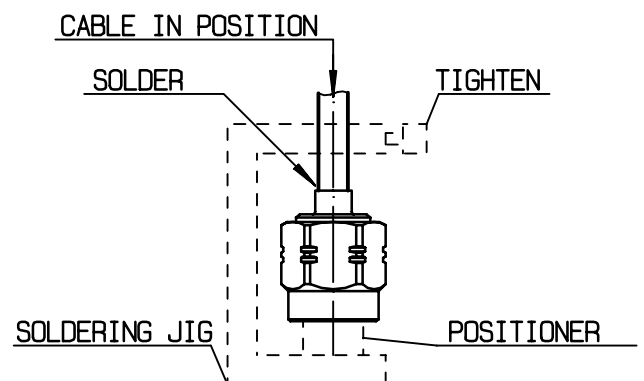
②

Screw the positioner R 282 744 220 onto the soldering jig R 282 740 000 .  
 Slide contact into positioner .  
 Insert solder gauge R 282 862 060 (62) between contact and cable .  
 Tighten and solder the contact .



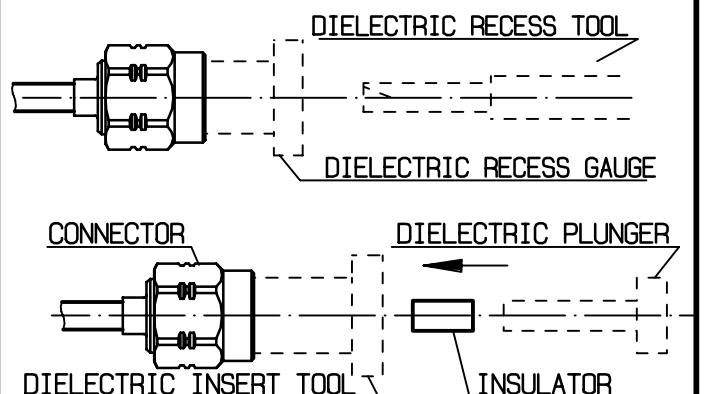
③

After cooling remove cable assembly from the jig .  
 Screw positioner R 282 744 061 (87) into the connector .  
 Slide cable into the connector until it bottoms againsts positioner .  
 Tighten .  
 Put 3 rings of solder around the cable and solder .



④

After cooling remove cable assembly from the jig .  
 Screw dielectric recess gauge R282 914 000(93) and trim dielectric with the dielectric recess tool R 282 915 010.  
 Screw female dielectric insert tool onto connector and insert insulator with the dielectric plunger R 282 730 040 .



TRIQUES