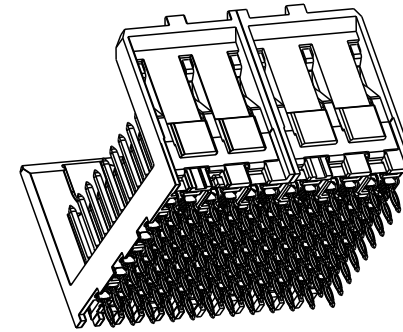
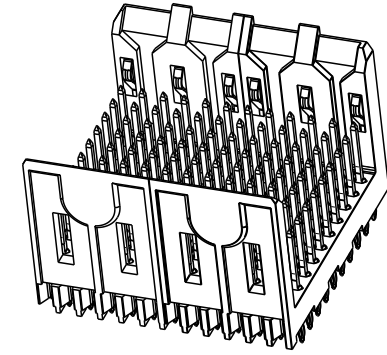
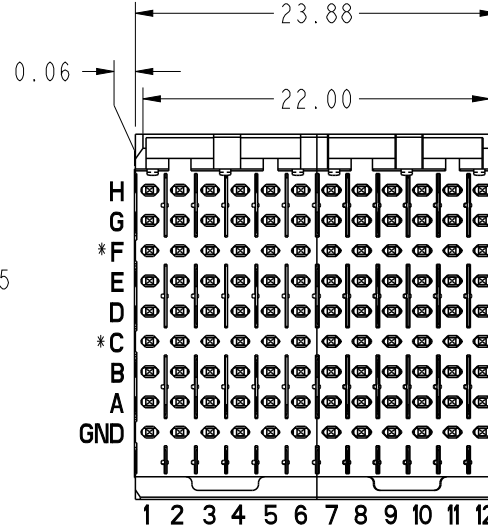
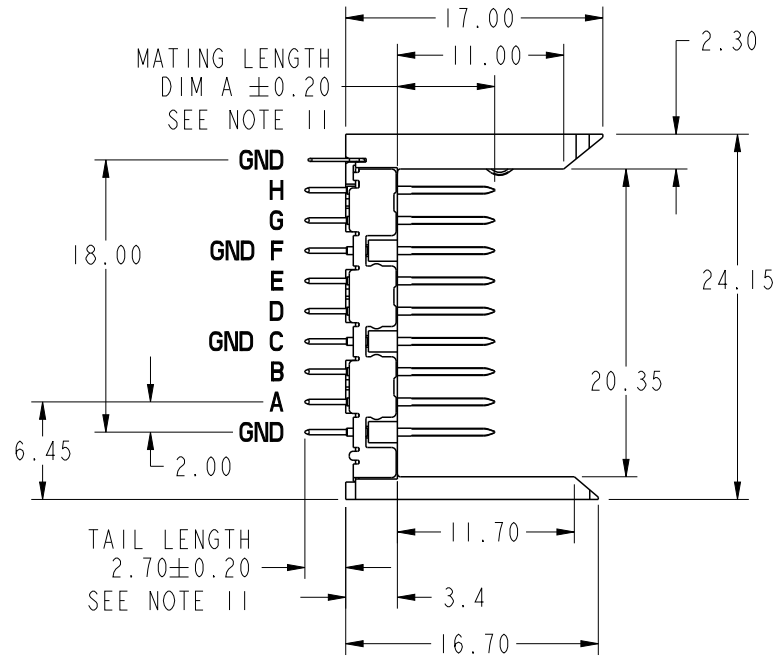


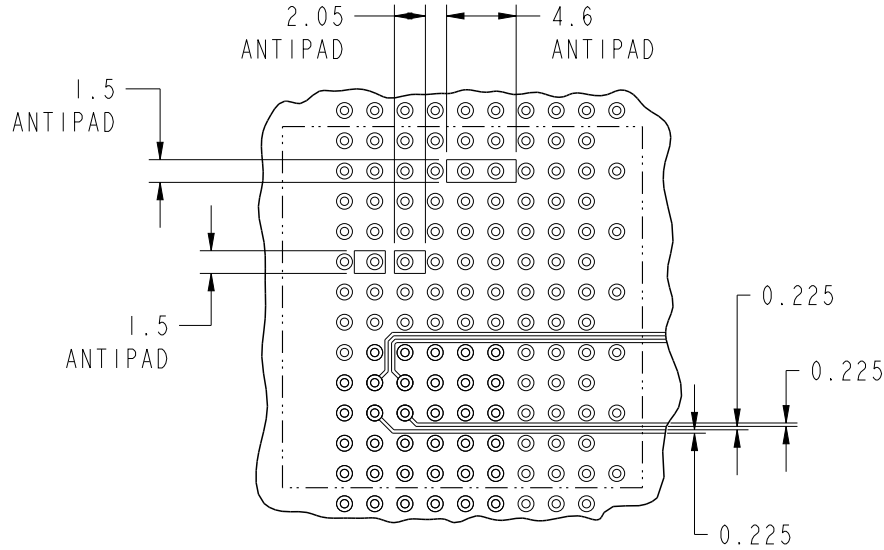
PRODUCT NUMBER
55004-X02ZZZLF



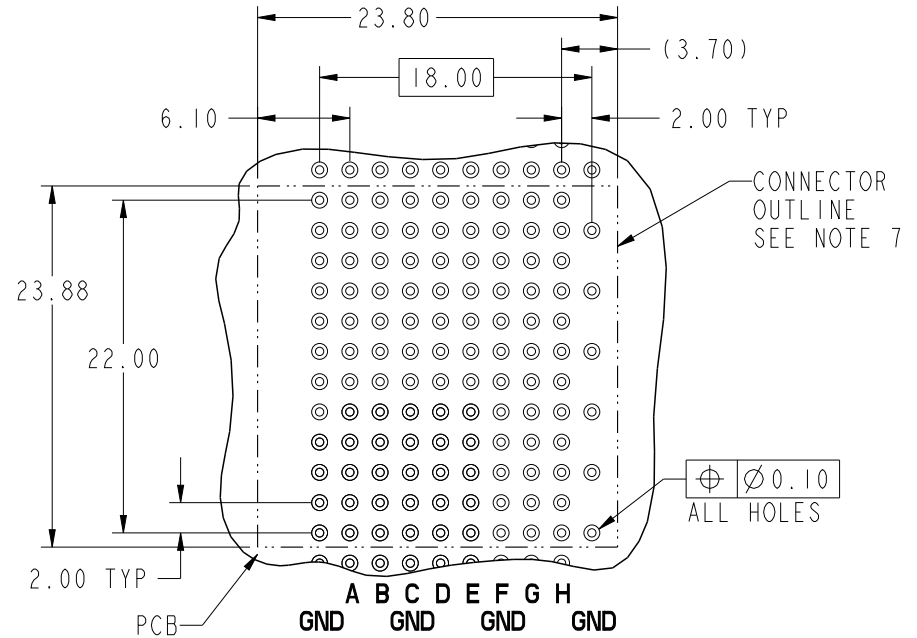
***ROW C AND F INFORMATION**
ODD NUMBER COLUMNS WITHIN ROW C & F ARE COMMONED TO GROUND INTERNALLY WITHIN THE HOUSING. THE EVEN NUMBER COLUMNS WITHIN ROW C & F ARE NOT. FOR MAXIMUM PERFORMANCE IT IS RECOMMENDED THESE EVEN COLUMNS BE GROUND COMMONED WITHIN PCB.
SEE NOTE 10

spec ref		dr P-Mathew Nebu 2011/05/20		projection 	MM ←→	size A4	scale 2:1
tolerance std ISO 406 ISO 1101		eng Narayanan, Aru 2021/01/07				ecn no ELX-I-39556-1	
TOLERANCES UNLESS OTHERWISE SPECIFIED		chr -				rel level Released	
surface ISO 1302		linear	0.X ±0.3 0.XX ±0.13 0.XXX ±0.050	product family METRAL 4000		dwg no 55004	
		angular	0° ±2°	amphenol-icc.com		rev K	
		appr Kuriakose, San 2021/01/08		product family METRAL 4000		sheet 1 of 4	
		title VERTICAL SIGNAL HDR 8 ROW P.F. 96 POS. SPECIAL LOAD STD.		cat. no.		Product - Customer Drw	

PRODUCT NUMBER
SEE SHEET 1



RECOMMENDED TRACK AND ANTIPAD DIMENSIONS



RECOMMENDED PCB HOLE PATTERN
(COMPONENT SIDE)
SEE NOTE 9
FOR PTH REFER DRAWING 58351

spec ref		dr P-Mathew Nebu 2011/05/20		projection 	MM 	size A4	scale 2:1
tolerance std ISO 406 ISO 1101		eng Narayanan, Aru 2021/01/07				ecn no ELX-I-39556-1	
TOLERANCES UNLESS OTHERWISE SPECIFIED		chr -				rel level Released	
surface ISO 1302		linear	0.X ±0.3 0.XX ±0.13 0.XXX ±0.050	product family		rev	
		angular	0° ±2°	amphenol-icc.com		55004	
		title VERTICAL SIGNAL HDR 8 ROW P.F. 96 POS. SPECIAL LOAD STD.		cat. no.		Product - Customer Drw	
				dwg no		sheet 2 of 4	

PRODUCT NUMBER

SEE SHEET 1

NOTES:

1. SEE APPLICATION SPECIFICATION GS-20-014 FOR INFORMATION ON AVAILABLE TOOLING, CIRCUIT BOARD DESIGN CONSIDERATIONS, REPAIR PROCEDURE AND PRODUCT OFFERINGS. SEE PRODUCT SPECIFICATION GS-12-185.

2. UNLESS OTHERWISE SPECIFIED, ALL DIMENSIONS AND TOLERANCES ARE IN ACCORDANCE WITH ASME Y14.5, 1994

3. MATERIAL : BODY : THERMOPLASTIC UL94-V0.
: CONTACT : COPPER ALLOY. 

4. FOR PLATING PERFORMANCE REFER DRAWING # 10159408. 

5. DIMENSIONAL RESTRICTIONS OF PINS IN HEADERS.
FOR USE WITH METRAL 4000 RECEPTACLES.
DIM A : 5.00mm MIN, 6.50mm MAX FOR ROWS A,B,D,E,G,H
DIM A : 5.00mm MIN, 8.00mm MAX FOR ROWS C-F
DIM A : 5.00mm MIN, 5.75mm MAX FOR ROWS G,H
FOR USE WITH METRAL 1000 RECEPTACLES
DIM A : 5.00mm MIN, 8.00mm MAX FOR ROWS A,B,C,D,E,F,G,H
DIM A : 5.00mm MIN, 5.75mm MAX FOR ROW GND

6. THE MIN PCB THICKNESS FOR FRONT PLUG-UP APPLICATIONS IS 1.6mm.

7. THE 'CONNECTOR OUTLINE' IS THE MIN OUTLINE REQUIRED. TO DETERMINE THE OUTLINE NECESSARY TO PERMIT THE VARIOUS TYPES OF REPAIR OPERATIONS, SEE APPLICATION SPECIFICATION GS-20-010.

8. P/N 55004-X02ZZZLE



LEAD FREE
SPECIAL LOAD PATTERN
NUMBER MODULES
PLATING CODE

9. AVOID TRACES ON TOP OF BOARD DUE TO EXPOSED GROUND SHIELDS.

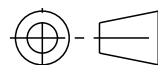


10. FOR FRONT PLUG-UP APPLICATIONS, THE EVEN NUMBERED PINS IN ROW "C" AND "F" CAN BE USED FOR POWER AS WELL AS FOR GROUND. IF THE SURROUNDING PINS ARE NOT USED FOR POWER, THEN EACH PIN CAN CARRY 3 AMPS. IF THE SURROUNDING PINS ARE USED FOR POWER, THEN EACH PIN CAN CARRY 1 AMP. WHEN THE SURROUNDING PINS ARE USED ONLY FOR LOW SPEED SIGNALS, THEN THE EVEN NUMBERED "C" AND "F" ROW PINS CAN ALSO BE USED FOR LOW SPEED SIGNALS.

11. AFTER INSERTION INTO CIRCUIT BOARD WITH QUALIFIED TOOL.

12. THE PRODUCTS MEET THE EUROPEAN UNION DIRECTIVES AND OTHER COUNTRY AS DESCRIBED IN GS-47-0004.

13. ALL PRODUCTS WILL WITHSTAND EXPOSURE TO 260°C FOR 60 SECONDS IN A CONVECTION, INFRA-RED OR VAPOR PHASE REFLOW OVEN.

14. A  SYMBOL WILL BE NEXT TO SNY DIMENSION, VIEW, OR NOTE WHICH HAS BEEN MODIFIED WITH THE CURRENT DRAWING REVISION.

spec ref		dr	P-Mathew Nebu	2011/05/20	projection 	MM 	size	A4	scale	2:1				
tolerance std	TOLERANCES UNLESS OTHERWISE SPECIFIED	eng	Narayanan, Aru	2021/01/07			ecn no	ELX-I-39556-1						
		chr	-	-			rel level	Released						
ISO 406	surface 	appr	Kuriakose, San	2021/01/08	product family		rev	K						
ISO 1101		linear		0.X	±0.3	Amphenol FCI	title	VERTICAL SIGNAL HDR 8 ROW	P.F. 96 POS. SPECIAL LOAD STD.	dwg no	55004			
		angular		0°	±2°							amphenol-icc.com	cat. no.	Product - Customer Drw
ISO 1302	linear		0.XX	±0.13	amphenol-icc.com									
	angular		0°	±2°		amphenol-icc.com	cat. no.	Product - Customer Drw	sheet 3 of 4					

PRODUCT #	SPECIAL LOAD PATTERN	
	ROW	PIN CODES
55004-X02002LF	H	03
	G	
	F	
	E	
	D	
	C	
	B	
	A	
GND	02	

DIM A	PIN CODES
5.00	01
5.75	02
6.50	03
7.25	04
8.00	*19

* CURRENTLY NOT AVAILABLE

spec ref		dr	P-Mathew Nebu	2011/05/20	projection 	MM 	size	A4	scale	2:1
tolerance std		eng	Narayanan, Aru	2021/01/07			ecn no	ELX-I-39556-1		
ISO 406 ISO 1101		TOLERANCES UNLESS OTHERWISE SPECIFIED		chr			-	rel level	Released	
surface		appr	Kuriakose, San	2021/01/08	product family		rev			
ISO 1302 	linear	0.X	±0.3	Amphenol FCi	title		dwg no	55004	rev	
		0.XX	±0.13		VERTICAL SIGNAL HDR 8 ROW					
		0.XXX	±0.050		P.F. 96 POS. SPECIAL LOAD STD.					
ISO 1302	angular	0°	±2°	amphenol-icc.com	cat. no.	Product - Customer Drw		sheet 4 of 4		