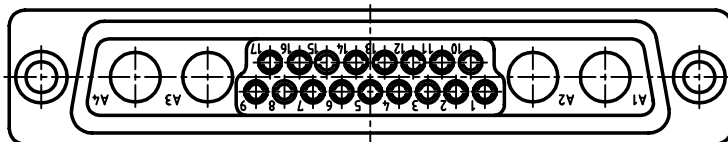
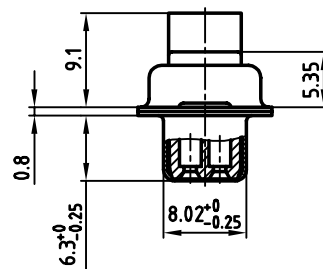
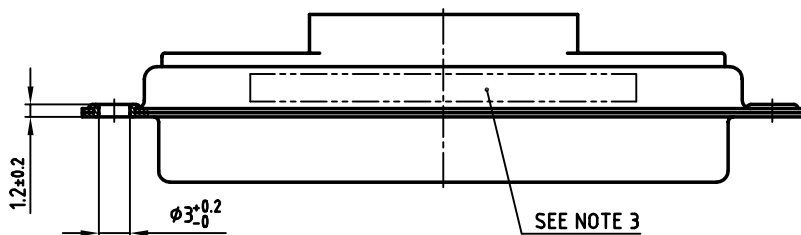
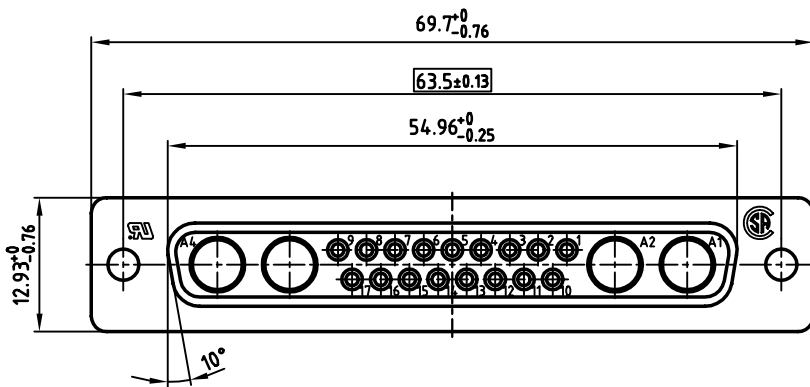


used for: D-SUB COMBINATION CRIMP



NOTES:

1. METALSHELLS: STEEL: TIN PLATED
2. INSULATORS: PBTP GF UL 94 V-0; BLACK
3. CONNECTOR IS PART MARKED: PART NO: CONEC Y/WW
4. [] = CRITICAL DIMENSION: SPC

Directive 2002/95/EC
RoHS
Compliant

THIS DRAWING MAY NOT BE COPIED OR REPRODUCED IN ANY WAY, AND MAY NOT BE PASSED ON TO A THIRD PARTY, WITHOUT WRITTEN PERMISSION. OWNERSHIP AND COPYRIGHT OF CONEC GmbH DO NOT ALTER CAD DRAWING BY HAND

rev.	description	date	name

tolerance	
1999	date
drawn	06.05.
name	Barcinski
appd.	06.05.
name	Mickenbecker
norm	
d-old	
CONEC	

scale:	2:1
material:	SEE NOTES
title: D-SUB COMBINATION FEMALE CRIMP STYLE 21WA4S	
dwg no:	AutoCAD/REL.14 DIN-A
13K1IP5A	
part no: 321WA4SXX99A10X	
3 sh:1/1	