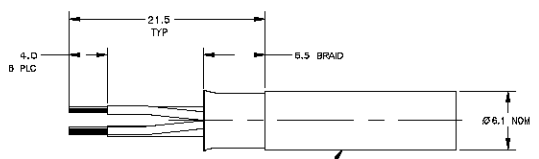


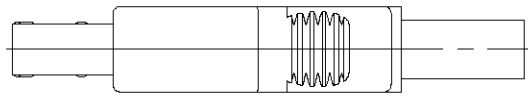
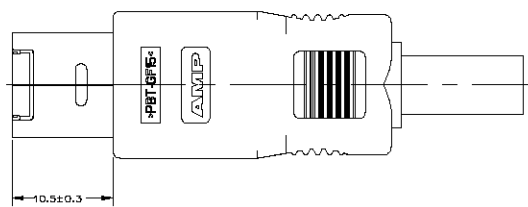
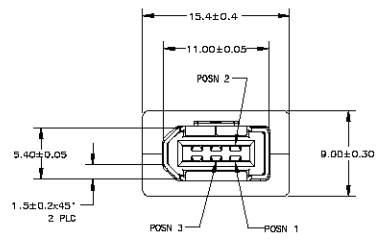
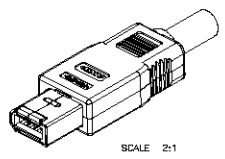
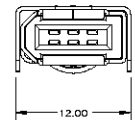
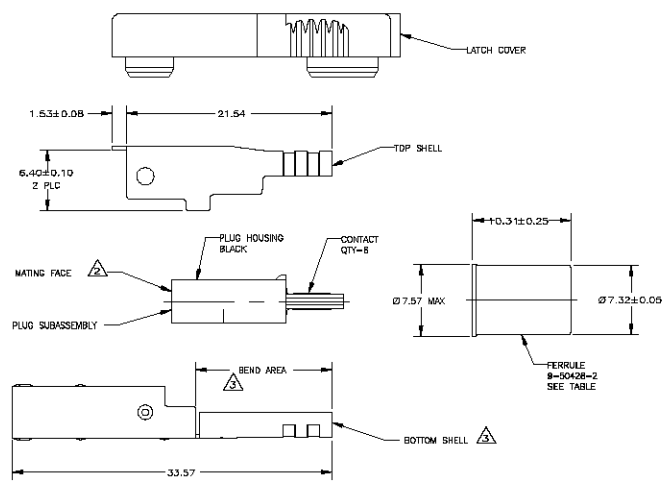
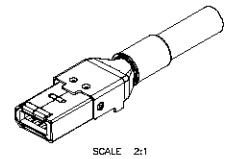
ASSEMBLED VIEW BEFORE CRIMP



CUSTOMER SUPPLIED CABLE  
CABLE 378974-1, GRAY, 8 CONDUCTOR,  
30/22 AWG, UNSTRIPPED IS AVAILABLE

- ⚠️ PLUG HOUSING AND COVERS: POLYESTER PBT, UL 94V-0 RATED; CONTACTS: PHOSPHOR BRONZE; SHELLS: CARBON STEEL; FERRULE: COPPER.
- ⚠️ FERRULE: 0.002-0.005 TIN OVER NICKEL; SHELLS: 0.002-0.005 TIN OVER NICKEL CONTACTS: 0.00075 MIN GOLD OR (0.00075 GOLD OVER 0.00075 MIN PALLADIUM) IN A 0.4 MIN WIDE AREA 0.82 FROM MATING FACE END OF CONTACT TIP, 0.00351 MIN TIN 5 MIN FROM OPPOSITE END, ALL OVER 0.00127 MIN NICKEL.
- ⚠️ BOTTOM SHELL SHOWN STRAIGHT, WILL BE DELIVERED WITH BEND AREA, FOR PLUG SUBASSEMBLY INSERTION.
- ⚠️ RECOMMENDED CRIMP TOOLS: PRO CRIMPER 354940-1 WITH DIE SET 58537-1. FOR Ø6.1 CABLE.

LEAD FREE



788513-3	788514-3	5787949-1	9-50428-2	788511-1	GRAY	788512-1	GRAY	5787950-1
TOP SHELL (1)	BOTTOM SHELL (1)	PLUG SUB-ASSY (1)	FERRULE (1)	COVER (1)	COLOR	LATCH COVER (1)	COLOR	PART NO
THIS DRAWING IS A CONTROLLED DOCUMENT.								
DRAWN BY: LEO ZHU			CHECKED BY: STEVEN YAO			APPROVED BY: [Signature]		
DATE: 07/20/2010			DATE: 07/20/2010			DATE: 07/20/2010		
MATERIAL: [Symbol]			MATERIAL: [Symbol]			MATERIAL: [Symbol]		
APPLICATION SPEC: [Symbol]			APPLICATION SPEC: [Symbol]			APPLICATION SPEC: [Symbol]		
SIZE: A1			SCALE: 4:1			SHEET: 1 OF 1		
CUSTOMER DRAWING			CUSTOMER DRAWING			CUSTOMER DRAWING		