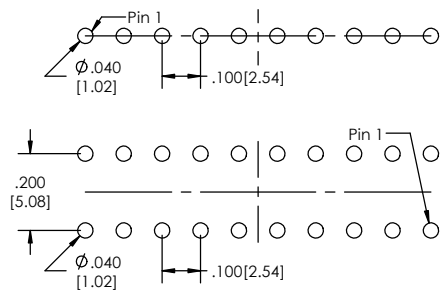
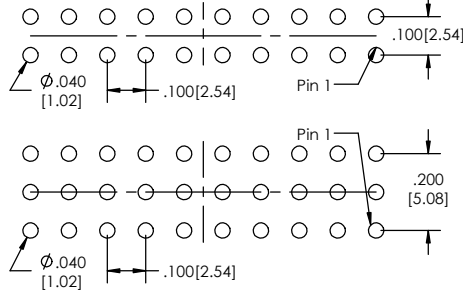


Recommended P.C. Board Layout  
SCALE 4:1

**SINGLE ROW**

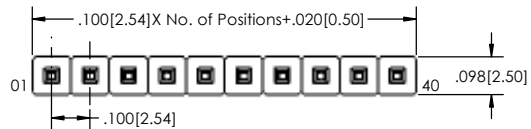
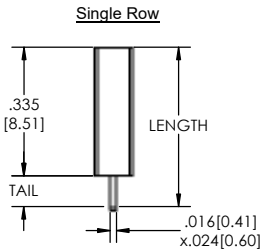
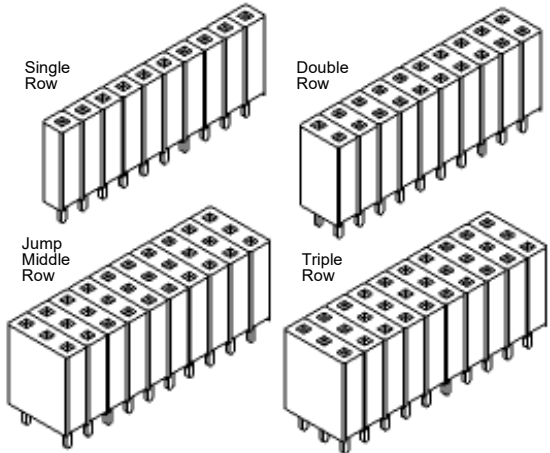


**DOUBLE ROW**

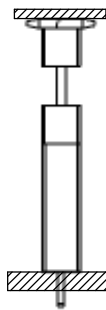


**JUMP MIDDLE ROW**

**TRIPLE ROW**



**APPLICATION**



SSHS-1 [XX] - [X] - [XX] - [XX] - [XX] - [XX] - [LF]  
(A) (B) (C) (D) (E) (F) (G)

- A. Pins Per Row
  - 1 through 40
- B. Row Specification
  - S= Single Row
  - D= Double Row
  - J= Jump Row
  - T= Triple Row
- C. Pin Options
  - See Pin Options below
- D. Plating Options
  - See Plating Options Below
- E. Lock Tight "LT" (Optional)
  - LT= Board locking feature. Leave blank if not needed.
- F. Polarized Position
  - Leave blank if not needed
  - If required, specify position to be empty e.g. .012 for pin 12
- G. LF= Lead Free

**Mates With:**

- BSTC TSHCR
- BSTCM TSHCRE
- BSTCR TSHCRSM
- BSTCRSM TSHR
- BSTS TSHRE
- LBSTCM TSHS
- LTSHCR TSHSCM
- LTSHCRE TSHSM
- LTSHR ULTSHSM
- LTSHRE ULTSHC
- LTSHSM ULTSHCR
- TSHC

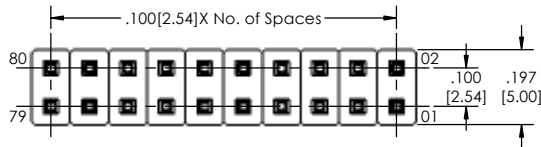
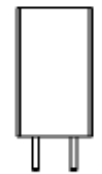
Plating options	
G	-10µ Gold on Contact Area/ Flash on Tail
T	-Matte Tin all Over
GT	-10µ Gold on Contact Area/ Matte Tin on Tail
H	-30µ Gold on Contact Area/ Matte Tin on Tail
F	-Gold Flash over Entire Pin
FT	- Gold Flash on Contact Area/ Matte Tin on Tail

**Specifications:**  
 Insertion Depth: .145(3.68) to .250(6.35)  
 Insertion Force - Per Contact - H Plating:  
 6oz. (1.67N) avg with .025(0.64mm) sq. pin  
 Withdrawal Force - Per Contact - H Plating:  
 5oz. (1.39N) avg with .025(0.64mm) sq. pin  
 Current Rating: 3.0 Ampere  
 Insulation Resistance: 1000M Ohms Min.  
 Dielectric Withstanding: 600V AC  
 Contact Resistance: 20M Ohms Max.  
 Operation Temperature: -40°C to +105°C  
 Max. Process Temperature  
 Peak: 260°C up to 20 secs.  
 Process: 230°C up to 60 secs.  
 Wave: 260°C up to 6 secs.  
 Manual Solder: 350°C up to 5 secs.

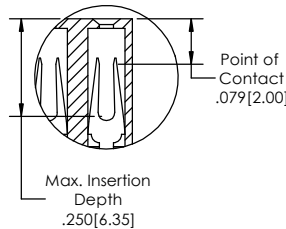
Pin Options		
Length	Tail Length	
.435 [11.05mm]	.100 [2.54mm]	02
.455 [11.56mm]	.120 [3.05mm]	04
.525 [13.34mm]	.190 [4.83mm]	06
.725 [18.42mm]	.390 [9.91mm]	08
.895 [22.73mm]	.560 [14.22mm]	10

**Materials:**  
 Contact Material: Phosphor Bronze  
 Insulator Material: Nylon 6T  
 Plating: Au or Sn over 50u" (1.27) Ni  
 Tails may be clipped to achieve specific dimensions.  
 Products cut to specific sizes are uncancelable/ nonreturnable.  
 Parts are subject to change without notice.

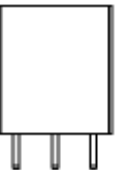
**Double Row**



**Jump Middle Row**



**Triple Row**



PROPRIETARY AND CONFIDENTIAL  
 THE INFORMATION CONTAINED IN THIS DRAWING IS THE SOLE PROPERTY OF Major League Electronics. ANY REPRODUCTION IN PART OR AS A WHOLE WITHOUT THE WRITTEN PERMISSION OF Major League Electronics IS PROHIBITED.

UNLESS OTHERWISE SPECIFIED:		COMMENTS:		NAME	DATE
DRAWN	EOW				01/20/15
CHECKED	GWE				01/20/15
ENG APPR.					
MFG APPR.					
INTERPRET GEOMETRIC TOLERANCING PER:		ADDRESS:		2533 Centennial Blvd. Jeffersonville, IN 47130 Phone: 812-670-4174 Fax: 812-670-4175 E-Mail: mle@mlelectronics.com	
NEXT ASSY		USED ON		FINISH	
APPLICATION		DO NOT SCALE DRAWING			
DIMENSIONS ARE IN INCHES TOLERANCES: ONE DECIMALS ±.100 TWO DECIMAL ±.100 THREE DECIMAL ±.005 FOUR DECIMAL ±.002				TITLE: SSSH-1 SERIES	
SCALE: 4:1				SHEET 1 OF 1	
SIZE C				DWG. NO.	
				REV B	

