

4

3

2

1

THIS DRAWING IS UNPUBLISHED.

RELEASED FOR PUBLICATION

© COPYRIGHT

ALL RIGHTS RESERVED.

LOC DIST

REVISIONS

| P | LTR | DESCRIPTION   | DATE      | DWN | APVD |
|---|-----|---------------|-----------|-----|------|
|   | T1  | ECR-13-001148 | 25JAN2013 | XZ  | SX   |
|   |     |               |           |     |      |
|   |     |               |           |     |      |

# REPLACED BY OCEAN STYLE APPLICATOR PART NUMBER 2151030-1

FOR REPLACEMENT PARTS FOR APPLICATOR 567067  
REFER TO ADDITIONAL PAGE(S). SPARE PARTS KIT (IF LISTED)  
WILL REMAIN AVAILABLE.

THE REPLACEMENT OCEAN STYLE APPLICATOR HAS THE  
SAME TERMINATOR/PRESS INTERFACE AS APPLICATOR  
567067

Dimensioning and tolerancing per ASME Y14.5M-2009


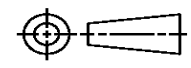
B

A

Dimensioning and tolerancing per ASME Y14.5M-2009

B

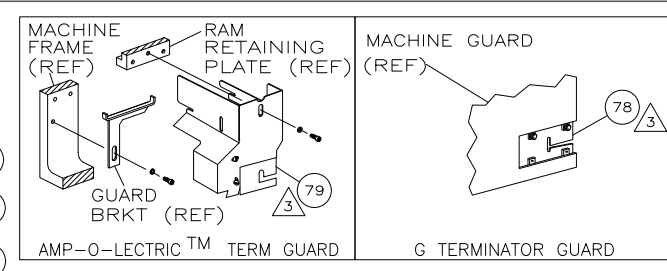
A

|   |          |                  |  |                     |
|---|----------|------------------|--|---------------------|
| THIS DRAWING IS A CONTROLLED DOCUMENT.  |          | DWN X. ZHAO      |  <b>TE Connectivity</b> |                     |
| DIMENSIONS:   |          | CHK S. XI        |  |                     |
|  |          | APVD S. XI       | NAME   |                     |
| TOLERANCES UNLESS OTHERWISE SPECIFIED:  |          | PRODUCT SPEC     | SIDE FEED HDM APPLICATOR   |                     |
| 0 PLC ±   | 1 PLC ±  | APPLICATION SPEC | SIZE   | CAGE CODE           |
| 2 PLC ±   | 3 PLC ±  |                  | A3   |                     |
| 4 PLC ±   | ANGLES ± |                  | DRAWING NO   | RESTRICTED TO       |
| MATERIAL  | FINISH   | WEIGHT           | ©- 567067  |                     |
|   |          |                  | SCALE  | SHEET 1 OF 2 REV T1 |

Dimensioning and tolerancing per ASME Y14.5M-2009

THIS DRAWING IS A CONTROLLED DOCUMENT.

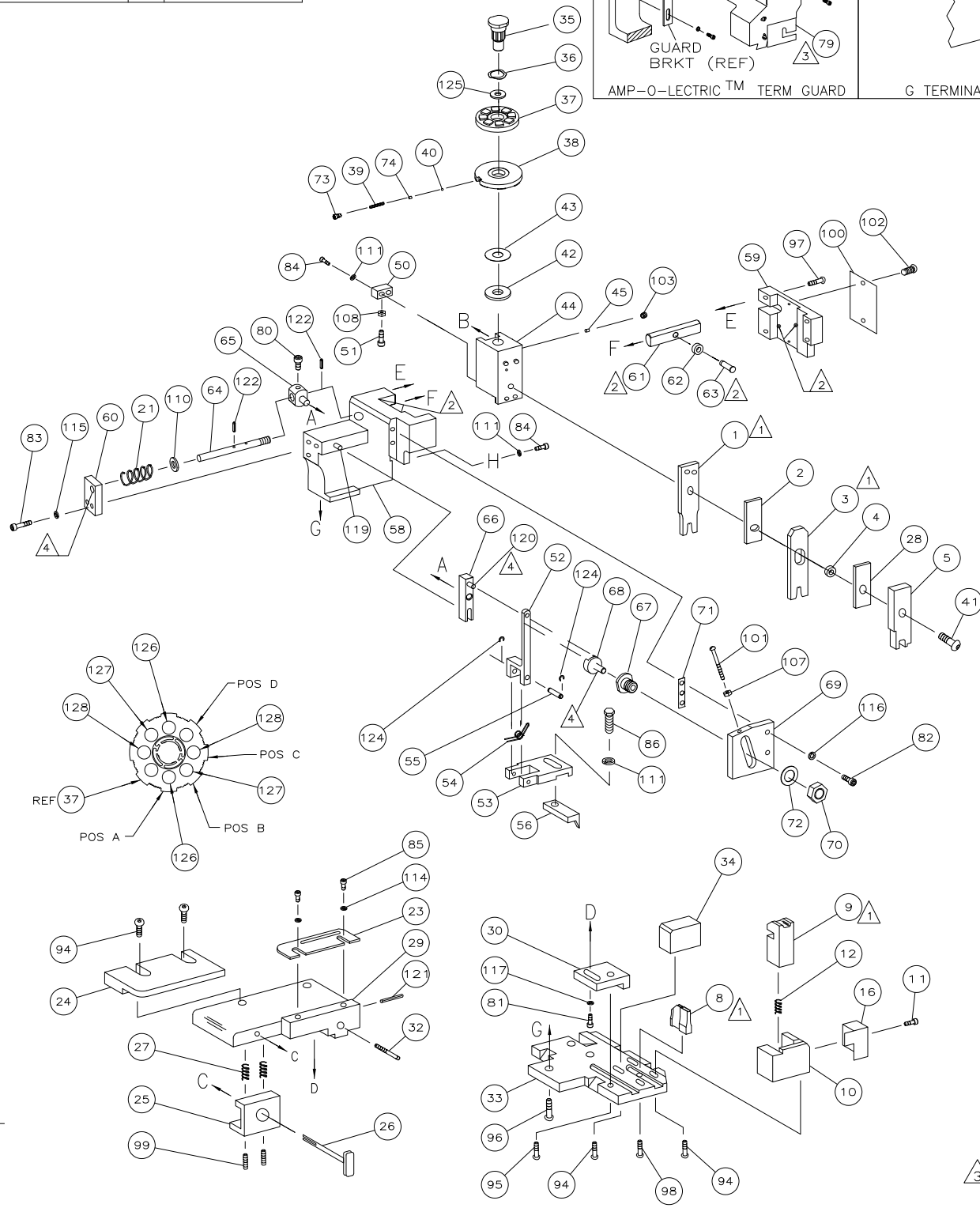
| PART NUMBER | REV | FIRST USED |
|-------------|-----|------------|
| 567067 -1   | T   | 854400-1   |
| 567067 -2   | T   | 565435-5   |
| 567067 -3   | T   | 354500-1   |
| 7-567067 -7 | T   | -          |



| TERMINAL NAME:        |               |
|-----------------------|---------------|
| MINI UNIV MATE-N-LOK™ |               |
| APPL SPEC 114-5050    |               |
| PIN 170360            | SOCKET 170362 |
| APPL SPEC 114-16017   |               |
| PIN 770903            | SOCKET 794137 |
| TERM APPL SPEC -      |               |

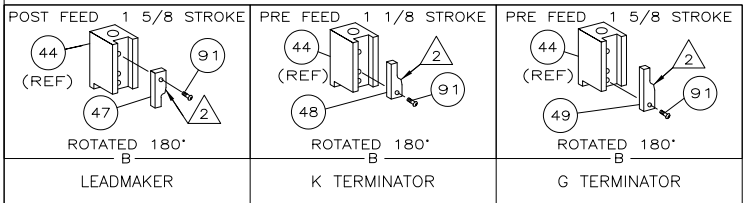
| CRIMPING DATA     |                    |                      |             |
|-------------------|--------------------|----------------------|-------------|
| PAD LTR           | CRIMP HEIGHT       | WIRE SIZE            |             |
| A                 | .042 ±.002         | 18                   |             |
| B                 | .036 ±.002         | 20 OR (2) 22         |             |
| C                 | .032 ±.002         | 22                   |             |
| D                 | NOT                | USED                 |             |
| CRIMP             | SIZE               | TYPE                 | RANGE       |
| WIRE              | .062               | F                    | 22-18       |
| INSUL             | .110               | F                    | .059-.094   |
| FEED              | APPL INST 408-8040 | SET UP GAGE 458637-1 | LAYOUT 1178 |
| WIRE STRIP LENGTH |                    | -                    |             |

| USED ON |  |
|---------|--|
| -1      | LEADMAKER MECH POST FEED -77 SPARE TOOLING KIT |
| -2      | BENCH MODEL K MECH PRE FEED                    |
| -3      | BENCH MODEL G MECH PRE FEED                    |



| QTY | REQD | PER ASSY | PART NO | DESCRIPTION | ITEM NO                         |     |
|-----|------|----------|---------|-------------|---------------------------------|-----|
| -   | 2    | 2        | 2       | 4-354779-3  | PIN, WIRE DISC (.3205)C         | 129 |
| -   | 2    | 2        | 2       | 3-354779-5  | PIN, WIRE DISC (.3165)B         | 128 |
| -   | 2    | 2        | 2       | 2-354779-4  | PIN, WIRE DISC (.3110)A         | 127 |
| -   | 1    | 1        | 1       | 986950-1    | WASHER, FLAT PRECISION          | 126 |
| -   | REF  | REF      | REF     | 21045-3     | RING,RET "C"(Ø.187)FD FING PIN  | 125 |
| -   | REF  | REF      | REF     |             |                                 | 123 |
| -   | REF  | REF      | REF     | 5-21028-1   | PIN,SLT SPR(Ø.125x.50)ADJ ROD   | 122 |
| -   | 1    | 1        | 1       | 4-21028-0   | PIN,SLT SPR(Ø.093x.75)ST GDE PL | 121 |
| -   | REF  | REF      | REF     | 1-21030-1   | PIN,DOWEL(Ø.187x.50)LEVER       | 120 |
| -   | REF  | REF      | REF     | 1-21030-6   | PIN,DOWEL(Ø.187x1.25)HOUSING    | 119 |
| -   | 1    | 1        | 1       | 21024-5     | WASHER, LOCK(#10)ADJ BLOCK      | 118 |
| -   | REF  | REF      | REF     | 21024-5     | WASHER,LOCK(#10)ADJ PLATE       | 117 |
| -   | REF  | REF      | REF     | 21024-5     | WASHER,LOCK(#10)FEED GDE ROD    | 116 |
| -   | 2    | 2        | 2       | 21024-2     | WASHER,LOCK(#4)FRONT STP GUIDE  | 115 |
| -   | 4    | 4        | 4       | 21024-4     | WASHER,LOCK(#8)STRIPPER         | 114 |
| -   | REF  | REF      | REF     | 21899-4     | WASHER,FLAT(Ø5/16)SCREW ADJ     | 113 |
| -   | 1    | 1        | 1       | 21018-5     | NUT,HEX(NO.6)HOLDDOWN           | 112 |
| -   | REF  | REF      | REF     | 21018-5     | NUT,HEX(6-32)FEED ADJ           | 111 |
| -   | 1    | 1        | 1       | 21009-2     | SCR,SKT SET(1/4-20x.25 LW)RAM   | 110 |
| -   | 2    | 2        | 2       | 21017-2     | SCR,DRIVE(#2x.19)ID PLATE       | 109 |
| -   | REF  | REF      | REF     | 6-23715-5   | SCR,PAN HD(6-32x1.50)FEED ADJ   | 108 |
| -   | 1    | 1        | 1       | 461264-1    | PLATE, IDENTIFICATION           | 107 |
| -   | 2    | 2        | 2       | 5-21006-6   | SCR,SET(10-32x.75)DRAG          | 106 |
| -   | 1    | 1        | 1       | 22733-8     | SCR,BHC(8-32x.38 LW)ANVIL       | 105 |
| -   | REF  | REF      | REF     | 2-21002-9   | SCR,BHC(10-32x.75)CAP           | 104 |
| -   | REF  | REF      | REF     | 2-22733-8   | SCR,BHC(1/4-20x.62)HOUSING      | 103 |
| -   | REF  | REF      | REF     | 2-21002-7   | SCR,BHC(10-32x.50)SG ADJ BLOCK  | 102 |
| -   | 6    | 6        | 6       | 2-21002-2   | SCR,BHC(8-32x.50)SHEAR          | 101 |
| -   | 1    | 1        | 1       | 1-21002-7   | SCR,BHC(6-32x.38)CAM            | 100 |
| -   | 1    | 1        | 1       | 2-22603-0   | SCR,HEX HD(8-32x.31)FEED FINGER | 99  |
| -   | 2    | 2        | 2       | 1-21000-3   | SCR,SHC(4-40x.25)F ST GUIDE     | 98  |
| -   | 3    | 3        | 3       | 2-21000-7   | SCR,SHC(8-32x.50)STRIPPER       | 97  |
| -   | REF  | REF      | REF     | 3-21000-7   | SCR,SHC(10-32x.75)FEED ROD GD   | 96  |
| -   | REF  | REF      | REF     | 3-21000-6   | SCR,SHC(10-32x.62)FD ADJ BLK    | 95  |
| -   | 1    | 1        | 1       | 3-21000-4   | SCR,SHC(10-32x.38)SG ADJ BL     | 94  |
| -   | REF  | REF      | REF     | 3-21000-4   | SCR,SHC(10-32x.38)PIVOT BLK     | 93  |
| -   | REF  | REF      | REF     | 455749-1    | GUARD, WINDOW                   | 92  |
| -   | REF  | REF      | REF     | 679532-1    | INSERT, GUARD                   | 91  |
| -   | 1    | 1        | 1       | 690603-1    | SPRING, ASSIST                  | 90  |
| -   | 1    | 1        | 1       | 23030-1     | SCR,SHC(6-32x.25 SL)INS DISC    | 89  |
| -   | REF  | REF      | REF     | 458109-1    | WASHER, SPECIAL                 | 88  |
| -   | REF  | REF      | REF     | 690517-1    | SPACER                          | 87  |
| -   | -77  | -3       | -2      | -1          | U/M                             | 86  |

| QTY | REQD | PER ASSY | PART NO | DESCRIPTION | ITEM NO                     |    |
|-----|------|----------|---------|-------------|-----------------------------|----|
| -   | REF  | REF      | REF     | 22594-8     | NUT,HEX(1/2-20)             | 70 |
| -   | REF  | REF      | REF     | 240628-1    | PLATE, ADJUSTMENT           | 69 |
| -   | REF  | REF      | REF     | 240626-1    | SHAFT, PIVOT                | 68 |
| -   | REF  | REF      | REF     | 240633-1    | BUSHING                     | 67 |
| -   | REF  | REF      | REF     | 455680-1    | LEVER, INTERMEDIATE         | 66 |
| -   | REF  | REF      | REF     | 240629-1    | BLOCK, PIVOT                | 65 |
| -   | REF  | REF      | REF     | 240632-2    | SCREW, ADJ FEED ROD         | 64 |
| -   | REF  | REF      | REF     | 240659-3    | PIN, CAM ROLLER             | 63 |
| -   | REF  | REF      | REF     | 240658-1    | ROLLER, CAM                 | 62 |
| -   | REF  | REF      | REF     | 454398-2    | ROD, FEED                   | 61 |
| -   | REF  | REF      | REF     | 454178-1    | GUIDE, FEED ROD             | 60 |
| -   | REF  | REF      | REF     | 454220-1    | CAP, RAM                    | 59 |
| -   | REF  | REF      | REF     | 454485-1    | HOUSING                     | 58 |
| -   | 1    | 1        | 1       | 458537-2    | PAWL, FEED                  | 57 |
| -   | REF  | REF      | REF     | 240624-1    | PIN, FEED FINGER            | 56 |
| -   | REF  | REF      | REF     | 691499-1    | SPRING, FEED FINGER         | 55 |
| -   | REF  | REF      | REF     | 690541-1    | HOLDER, FEED FINGER         | 54 |
| -   | REF  | REF      | REF     | 455679-1    | LEVER, TERMINAL FEED ARM    | 53 |
| -   | 1    | 1        | 1       | 811242-2    | BUMPER, HOLDDOWN            | 52 |
| -   | 1    | 1        | 1       | 690753-1    | SPACER, TONKER              | 51 |
| -   | 1    | 1        | 1       | 690602-6    | CAM, PRE-FEED 1 5/8 ST      | 50 |
| -   | 1    | 1        | 1       | 690602-5    | CAM, PRE-FEED 1 1/8 ST      | 49 |
| -   | 1    | 1        | 1       | 690501-4    | CAM, POST-FEED 1 5/8 ST     | 48 |
| -   | 1    | 1        | 1       | 459456-1    | APPLICATOR, BASIC (SUBASSY) | 47 |
| -   | 1    | 1        | 1       | 690191-1    | PLUG, NYLON                 | 46 |
| -   | 1    | 1        | 1       | 455673-1    | RAM                         | 45 |
| -   | 1    | 1        | 1       | 690125-1    | WASHER, LAMINATED           | 44 |
| -   | 1    | 1        | 1       | 1-690124-4  | WASHER, RAM                 | 43 |
| -   | 1    | 1        | 1       | 7-21002-9   | BOLT, CRIMPER(5/16x1.00)    | 42 |
| -   | 1    | 1        | 1       | 23241-6     | BALL, STEEL                 | 41 |
| -   | 1    | 1        | 1       | 690170-1    | SPRING, COMPRESSION         | 40 |
| -   | 1    | 1        | 1       | 690142-1    | DISC, INSULATION            | 39 |
| -   | 1    | 1        | 1       | 354777-1    | WIRE DISC, PLASTIC          | 38 |
| -   | 1    | 1        | 1       | 22480-5     | WASHER, SPRING              | 37 |
| -   | 1    | 1        | 1       | 690212-1    | POST, RAM                   | 36 |
| -   | 1    | 1        | 1       | 690786-3    | SUPPORT, TERMINAL           | 35 |
| -   | REF  | REF      | REF     | 455675-1    | PLATE, BASE                 | 34 |
| -   | 1    | 1        | 1       | 690432-3    | SCREW, ADJUSTMENT           | 33 |
| -   | REF  | REF      | REF     | 455689-1    | BLOCK, STRIP GUIDE ADJ      | 32 |
| -   | 1    | 1        | 1       | 455671-1    | PLATE, STRIP GUIDE          | 31 |
| -   | 1    | 1        | 1       | 1-455888-0  | SPACER, FRONT SHEAR DEP     | 30 |
| -   | 2    | 2        | 2       | 1-22284-0   | SPRING, DRAG                | 29 |
| -   | 1    | 1        | 1       | 690546-1    | LEVER, DRAG RELEASE         | 28 |
| -   | 1    | 1        | 1       | 679754-1    | DRAG, TERMINAL              | 27 |
| -   | 1    | 1        | 1       | 6-690504-3  | GUIDE, STRIP (REAR)         | 26 |
| -   | 1    | 1        | 1       | 690438-1    | GUIDE, STRIP (FRONT)        | 25 |
| -   | 1    | 1        | 1       | 690472-2    | STRIPPER                    | 24 |
| -   | REF  | REF      | REF     | 4-22284-9   | SPRING, FEED RETURN         | 23 |
| -   | 1    | 1        | 1       | 691353-1    | STRIPPER                    | 22 |
| -   | 1    | 1        | 1       | 691667-1    | GUARD, CHIP (FRONT)         | 21 |
| -   | 1    | 1        | 1       | 691667-1    | GUARD, CHIP (FRONT)         | 20 |
| -   | 1    | 1        | 1       | 691667-1    | GUARD, CHIP (FRONT)         | 19 |
| -   | 1    | 1        | 1       | 691667-1    | GUARD, CHIP (FRONT)         | 18 |
| -   | 1    | 1        | 1       | 691667-1    | GUARD, CHIP (FRONT)         | 17 |
| -   | 1    | 1        | 1       | 691667-1    | GUARD, CHIP (FRONT)         | 16 |
| -   | 1    | 1        | 1       | 691667-1    | GUARD, CHIP (FRONT)         | 15 |
| -   | 1    | 1        | 1       | 691667-1    | GUARD, CHIP (FRONT)         | 14 |
| -   | 1    | 1        | 1       | 691667-1    | GUARD, CHIP (FRONT)         | 13 |
| -   | 1    | 1        | 1       | 691667-1    | GUARD, CHIP (FRONT)         | 12 |
| -   | 1    | 1        | 1       | 690461-1    | STOP, SHEAR                 | 11 |
| -   | 1    | 1        | 1       | 690459-1    | HOLDER, SHEAR (FRONT)       | 10 |
| -   | 1    | 1        | 1       | 462006-1    | SHEAR, FLOAT (FRONT)        | 9  |
| -   | 1    | 1        | 1       | 1-803653-1  | ANVIL                       | 8  |
| -   | 1    | 1        | 1       | 1-803653-1  | ANVIL                       | 7  |
| -   | 1    | 1        | 1       | 1-803653-1  | ANVIL                       | 6  |
| -   | 1    | 1        | 1       | 2-455889-0  | DEPRESSOR, SHEAR (FRONT)    | 5  |
| -   | 1    | 1        | 1       | 238011-7    | SPACER, BLOCK CRIMPER       | 4  |
| -   | 1    | 1        | 1       | 2-456134-2  | CRIMPER, INSULATION         | 3  |
| -   | 1    | 1        | 1       | 455888-1    | SPACER, CRIMPER             | 2  |
| -   | 1    | 1        | 1       | 2-1633730-4 | CRIMPER, WIRE               | 1  |



- 1 RECOMMENDED SPARE PARTS.
- 2 GREASE LIGHTLY.
- 3 GUARD MUST BE IN PLACE WHEN OPERATING APPLICATOR IN A BENCH MACHINE.
- 4 LUBRICATE DAILY USING NO. 20 MACHINE OIL.
- 5. ITEMS WITH QTY OF REF SPECIFIED (EXCEPT ITEMS 78 AND 79) ARE USED ON ITEM 46.
- 6 FOR SINGLE WIRES: .126-.146
- 7 FOR TWO WIRES: .138-.157

| LOC                       | DIST | 66 |
|---------------------------|------|----|
| A                         |      |    |
| LEADMAKER & BENCH MACHINE |      |    |

114-13089 IS FOR SEAL APPLICATION ONLY. "F" TYPE INSULATION CRIMP IS USED AT A REDUCED INSULATION PAD SETTING FOR SEAL APPLICATIONS.

|               |        |     |    |      |     |
|---------------|--------|-----|----|------|-----|
| APVD          | DATE   | REV | BY | DATE | REV |
| ECR-11-008753 | 4-2011 | MY  | GB |      |     |

TE Connectivity

SCALE: A1 DRAWING NO: 567067 SHEET 1 OF 1 REV T

GUSTOMER ACCESSIBLE PRODUCTION DRAWING