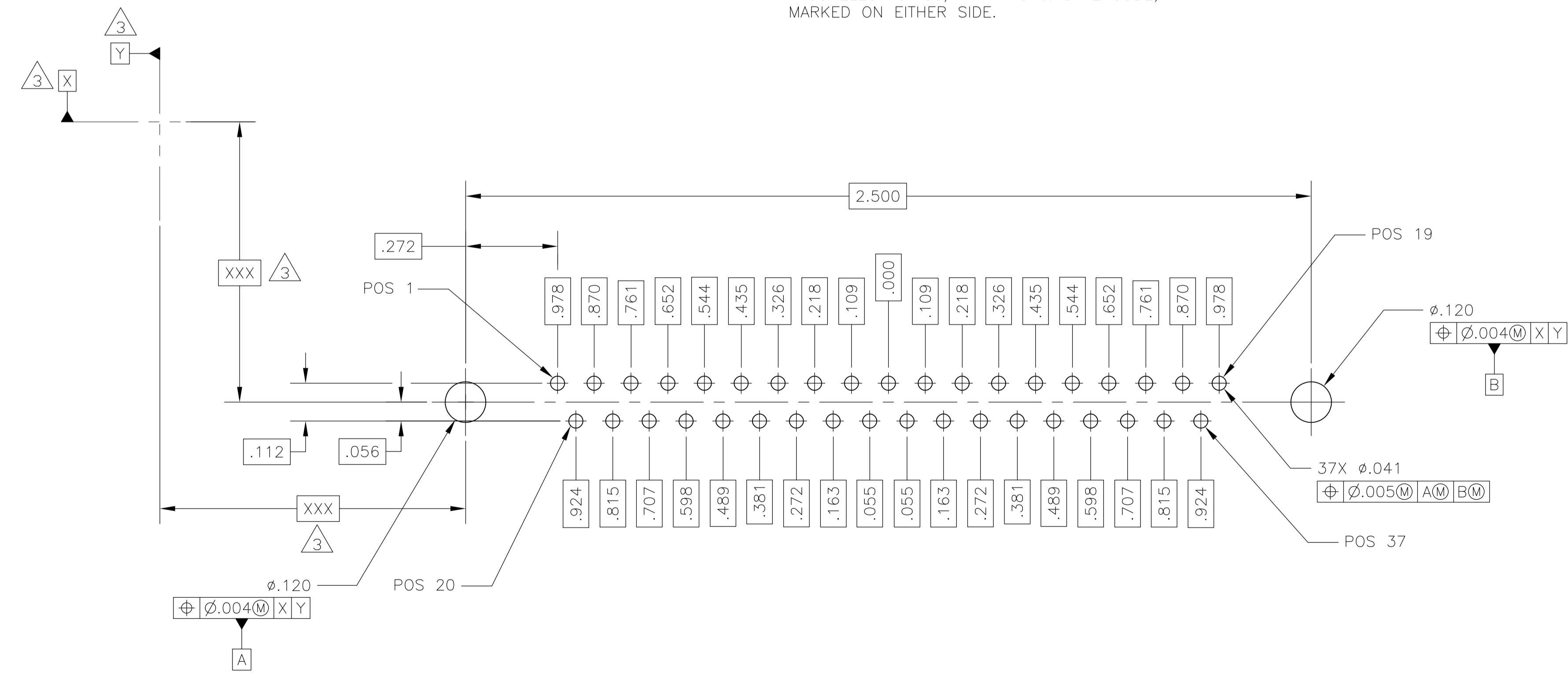
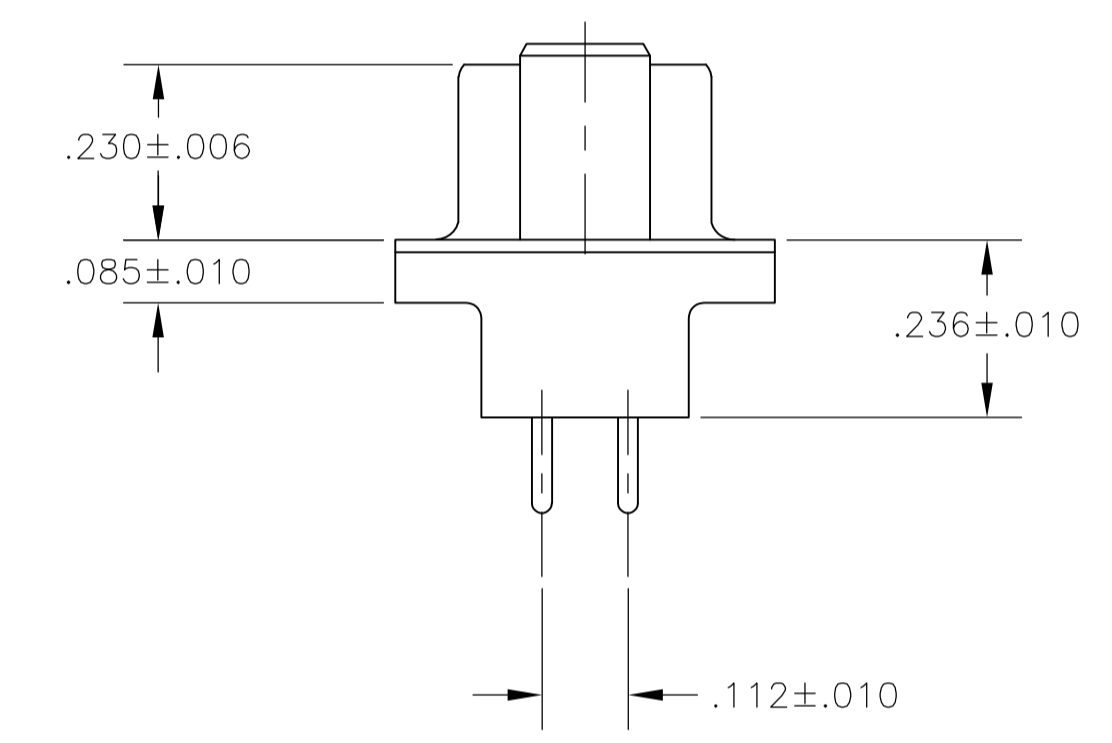
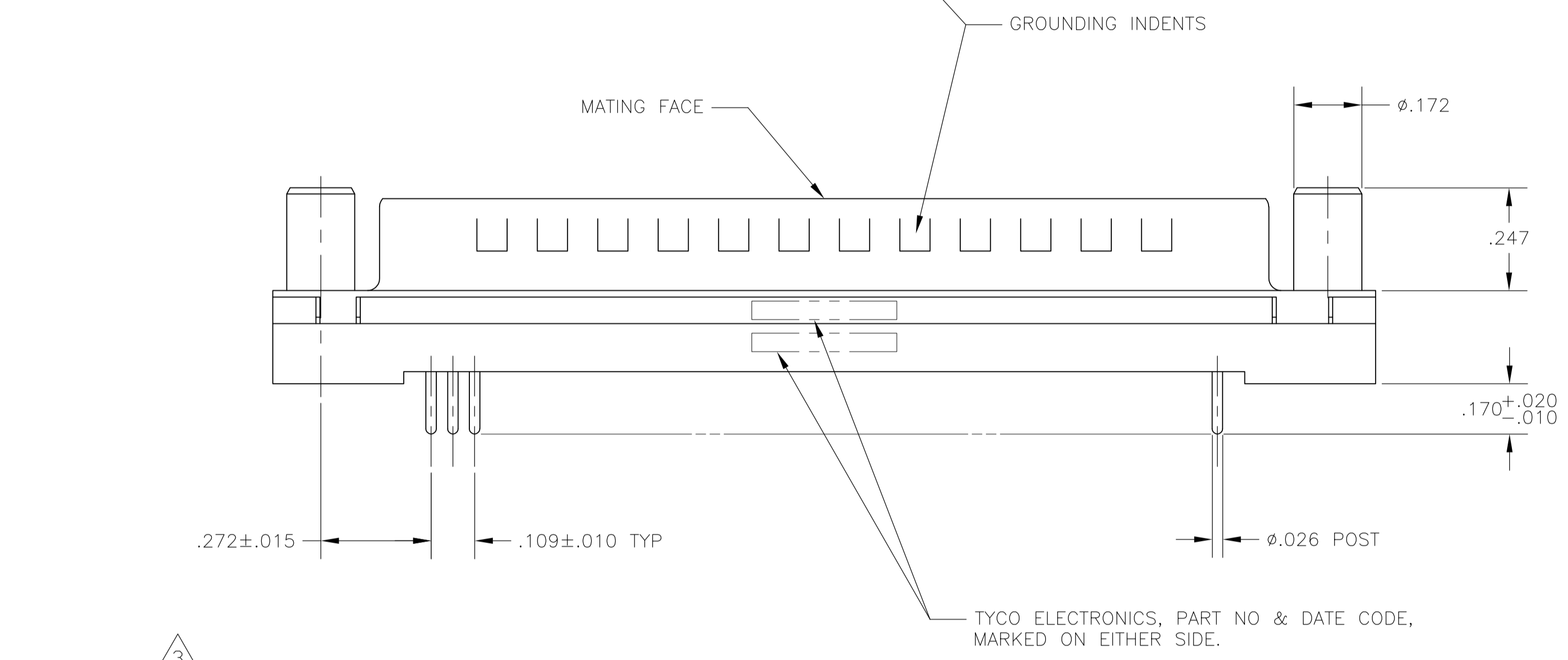


- 1 HOUSING: FLAME RETARDANT, 94V-0 RATED, THERMOPLASTIC; COLOR: BLACK.  
SHELL: CARBON STEEL.  
CONTACTS: BRASS.  
SCREWLOCKS: ZINC.
- 2 SHELL: .000200 MIN TIN OVER .000100 MIN COPPER.  
SCREWLOCKS: CLEAR (TRIVALENT) CHROMATE COATING.  
CONTACTS: GOLD PLATED FOR A LENGTH OF .150 MIN FROM MATING END, .000030 MIN GOLD IN MATED AREA, .000100 MIN TIN-LEAD ON TERMINATION END, ALL OVER .000050 MIN NICKEL ON ENTIRE CONTACT.
- 3 DATUMS AND BASIC DIMENSIONS ESTABLISHED BY CUSTOMER.



RECOMMENDED PC BOARD MOUNTING DIMENSIONS

2-747705-1  
PART NUMBER

THIS DRAWING IS A CONTROLLED DOCUMENT.		DIN C. VALENTINE 02AUG2010	Tyco Electronics Corporation Harrisburg, PA 17105-3608
DIMENSIONS: INCHES		CHK S. BOLASH 02AUG2010	
TOLERANCES UNLESS OTHERWISE SPECIFIED:		APVD S. BOLASH 02AUG2010	NAME: PLUG ASSEMBLY, SIZE 4, 37 POS., VERTICAL, .026 DIA. DUPLEX PLATED POSTS, FRONT SHELL, AMPLIMITE
0 PLC ± -		PRODUCT SPEC	108-40025
1 PLC ± -		APPLICATION SPEC	114-40023
2 PLC ± -		SIZE	A1
3 PLC ± .005		CODE	00779
4 PLC ± -		DRAWING NO	C=747705
ANGLES ± -		RESTRICTED TO	
MATERIAL	FINISH	WEIGHT	CUSTOMER DRAWING
1	2	SCALE NTS	SHEET 1 OF 1 REV L