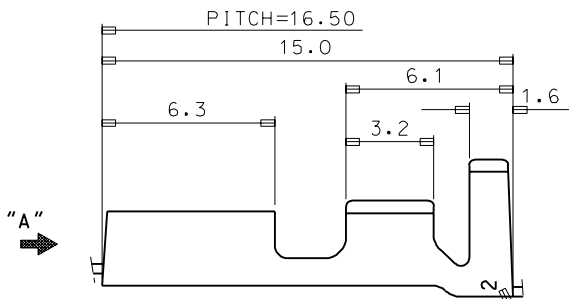
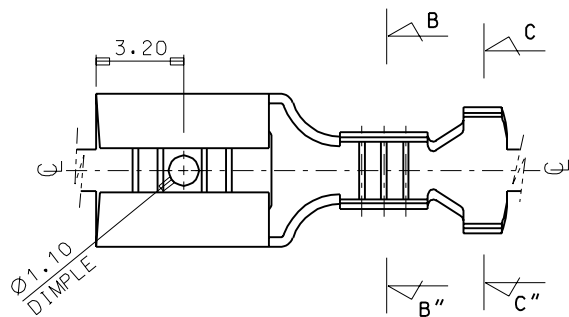


ENG. NO SD 35718-08*0

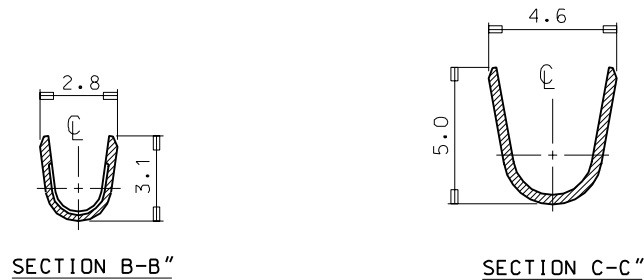
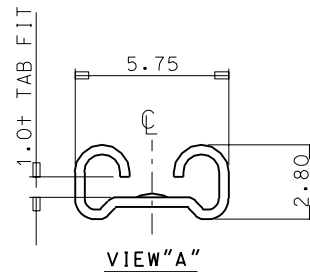
EDP NO.

SIMILAR ITEM

PROJECT NO.



TRADE MARK
(MK2)



- NOTES
1. MATERIAL: BRASS , 0.35THICKNESS
 2. FINISH: 35718-0800:UNPLATED
35718-0810:POST-TIN PLATED

WIRE RANGE AWG #20-#16 (0.52-1.31mm ²)				MATERIAL SEE NOTES				MOLEX-KOREA CO.,LTD.	
INSULATION RANGE Ø2.6-3.5				GENERAL TOLERANCE DIMENSION : 1p1cs:±0.30 ANGLE → 2p1cs:±0.20				DRAWN BY W. Y. YANG	CHK'D BY
DIE FEED: //				B	REVISED	95-007	95.1.17	APP'D BY	SCALE 6:1
APPLICATOR FEED: 16.5				A	CAD REDRAWING	93-011	93.5.24	TITLE: .187 SLIP-ON REC'	
Q'TY/ REEL OR PACK 7,000 Q'ty/Reel				LTR	REVISION RECORD	ECN	DATE	SHEET 1 of 1	
REVISE ONLY ON CAD SYSTEM				ASS'Y PART DESCRIPTION ENG. NO.				ENG. NO. SD 35718-08*0	
				//				REV B	