

NCP11187A65P45WGEVB



ON Semiconductor®

www.onsemi.com

45 W Auxiliary Power Supply for White Goods and Industrial Equipment with NCP11187A65

EVAL BOARD USER'S MANUAL

GENERAL SPECIFICATIONS

Devices	Applications	Topology	Output Power	Input Voltage	Output Spec.
NCP11187A65	White Goods and Industrial Power Supplies	Isolated Flyback	45 W	85–265 Vac	12 V/3.5 A & 16 V/0.2 A
Efficiency	Standby Power	Package Temperature	Operating Temperature	Cooling Method	Board Size
> 88% @ Full-load	< 50 mW @ 230 Vac	90°C	0–50°C	Natural Convection In Open Frame	145 x 60 x 30 mm 2.83 W/inch ³

Description

This user's manual introduces not only performance of a reference design with 45 W isolated flyback converter using NCP11187 for auxiliary power supplies but also provides key experimental results and information.

NCP1118x is a highly enhanced switcher integrating a peak current mode PWM controller employing mWSaver™ and frequency reduction technology and a highly robust 800 V Super-junction II MOSFET. Additionally, it features a high-voltage startup circuit, frequency reduction, slope compensation, constant output power limit, and highly reliable and various protections. As a result, it allows designing cost-effective off-line power supplies using NCP1118x with less BOM counts and smaller PCB size and high efficiency as well. Additionally, it could get low standby power consumption less than typically 50 mW despite of multiple outputs.

On top of that, NCP1118x features variety of protections for highly reliable power supply design such as a feedback pin open-loop protection (OLP), current-sense resistor short protection (CSSP), brown-out, line over-voltage protection (Line-OVP) using an line voltage sensing pin operated with auto-recovery operation and constant over-power protection. This user's manual demonstrates those protections under various conditions.

Key Features

- Peak Current Mode Controller Integrated 800 V SJ-II MOSFET, High Voltage Start-up, Soft-Start, and Slope Compensation
- mWSaver Technology Provides Industry's Best-in-Class Standby Power
- Switching Frequency Option: 65/100/130 kHz
- Proprietary Asynchronous Frequency Hopping Technique for Low EMI
- Programmable Constant Output Power Limit for Entire Input Voltage Range
- Precise Brown-out Protection and Line Over-voltage Protection (LOVP) with Hysteresis
- Current Sense Short Protection (CSSP) and Abnormal Over-Current Protection (AOCP)
- Thermal Shutdown (TSD) with Hysteresis
- All Protections Operated by Auto-recovery: VCC Under-voltage Lockout (UVLO), Feedback Open-Loop Protection (OLP), VCC Over-Voltage Protection (OVP)

NCP11187A65P45WGEVB

REFERENCE BOARD SCHEMATIC & DESCRIPTION

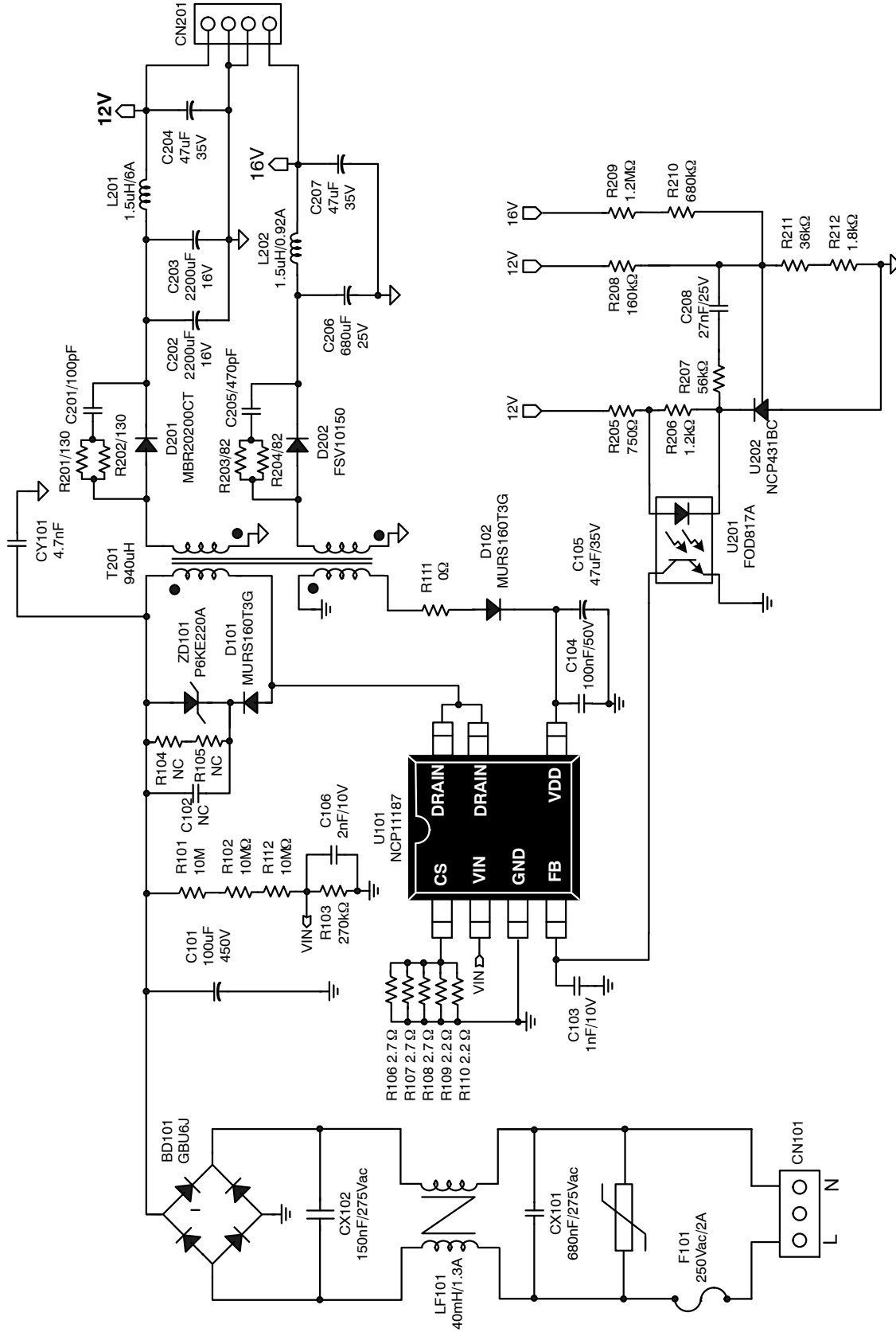


Figure 1. Reference Board Schematic

NCP11187A65P45WGEVB

This reference board comprises four parts overall, EMI filter, primary side control, secondary output and feedback circuit part. For more detail, these parts could be described as following.

1. *EMI filter* is formed by components of a common-mode filter LF101, X-capacitors CX101 and CX102, and Y-capacitor CY101.
2. *Primary side control part* in flyback converter consists of NCP11187 switcher U101, a power transformer T201, a bulk capacitor C101, a full-wave rectifier BD101, a snubber circuit ZD101 and D101 and line input voltage sensing R101~R103, R112 and C106. Additionally, V_{CC} bias is powered for from the auxiliary winding of T201 and related components of D102, C104 and C105 during normal operations. The resistor array of R106~R110 is for drain current sensing resistor and connected to CS pin. The sensed drain current is used in peak current mode control and some protections e.g. pulse-by-pulse current limit, AOCP (Abnormal Over-current Limit) and CSSP (Current-sensing Short Protection) and etc. In this reference board, TVS (Transient Voltage Suppressor) is utilized for a snubber to suppress voltage spike produced by leakage inductance at MOSFET turn-off. Optionally, RCD snubber can be used since component places of R104, R105 and C102 is already assigned, if needed. Meanwhile, C106 is used to decouple high frequency switching noise from line sensing signals. It is typically 1 nF~3.3 nF in this sensing method, but should be adjusted considering real noises in an actual experiment.
3. *Secondary side output stage* has two output terminals (12 V/3.5 A and 16 V/0.2 A) and associated components such as output diodes D201, D202, output capacitors C202~C204, C206, C207 with filter inductors L201, L202, and RC snubber R201, C201, R203, C205 for the output diodes. The output capacitors and filter inductors are formed as pi-type filter to reduce output voltage ripple while rejecting high frequency switching noise.
4. *Feedback circuit at the secondary side* employs dual feedback circuit with two poles & one zero to increase feedback loop response and reduce voltage variation on the unregulated output voltage caused by cross-regulation depending on load variation. Main regulated output is 12 V-output through feedback circuits of resistors R208, R211, R212 and R205, a voltage reference U202 and an opto-coupler U201. The 16 V-output voltage can be also sensed and affect feedback loop with low weight through R209 and R210. R207 and C208 provides one pole and zero and should be adjusted considering feedback response in an actual experiment.

NCP11187A65P45WGEVB

PCB LAYOUT

The PCB is composed of bottom side single layer with FR4 and 1 oz. copper cladding.

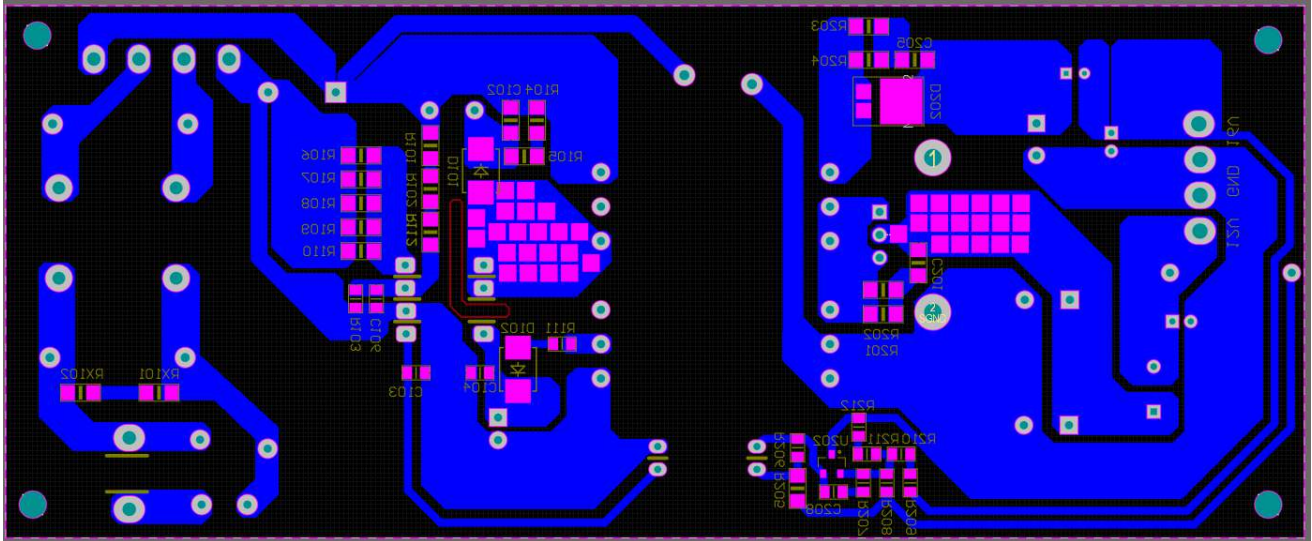


Figure 2. PCB Bottom Side Layer and Silk Screen

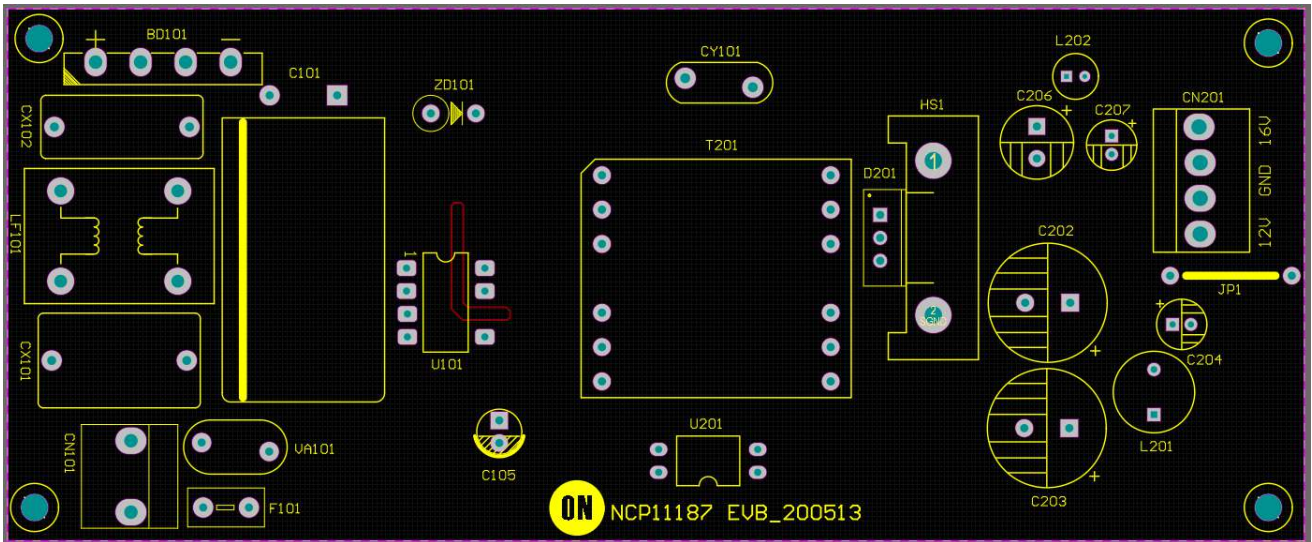


Figure 3. Top Side Silk Screen of the PCB

NCP11187A65P45WGEVB

PHOTOGRAPH OF REFERENCE BOARD

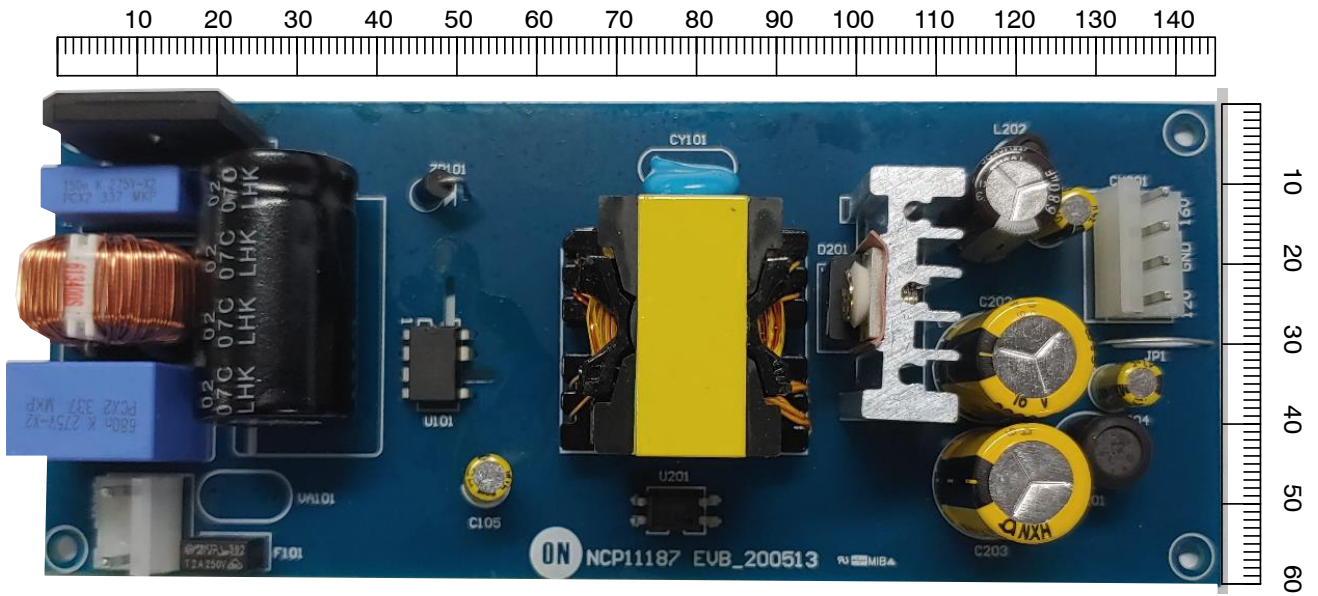


Figure 4. Photograph of Reference Board (Top)

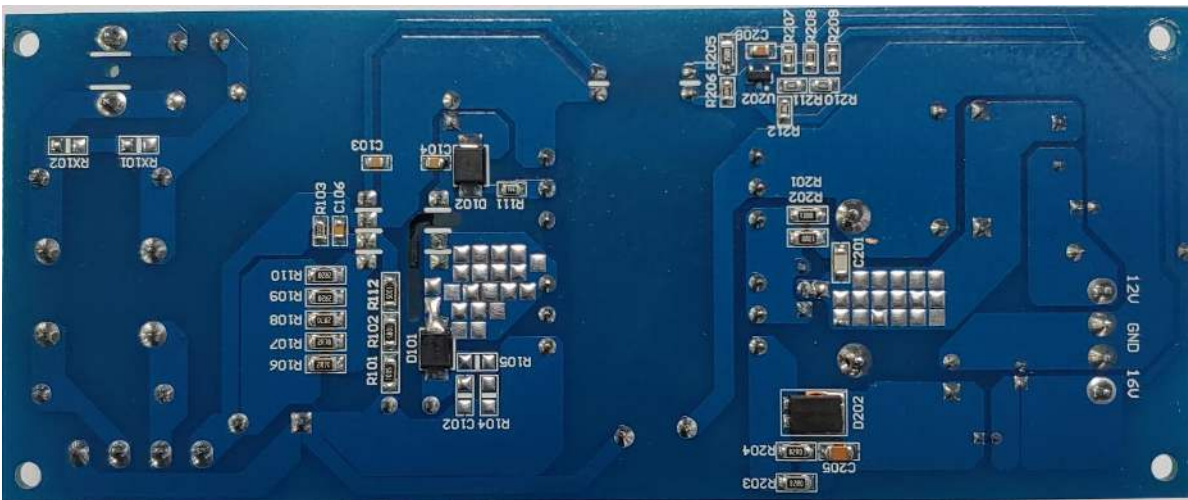


Figure 5. Photograph of Reference Board (Bottom)

NCP11187A65P45WGEVB

TRANSFORMER SPECIFICATION

- Transformer Overall Specification

	Value	Note
Core	PQ2625	TDK
Bobbin	PQ2625 bobbin	SUMMITOMO BAKELITE CO LTD
Primary-side inductance	940 μ H (typ)	Measure pin 1 to 3 @ 100 kHz & 1 V
Leakage inductance	6 μ H	Short all pin except primary-side winding

- Transformer Overall Specification

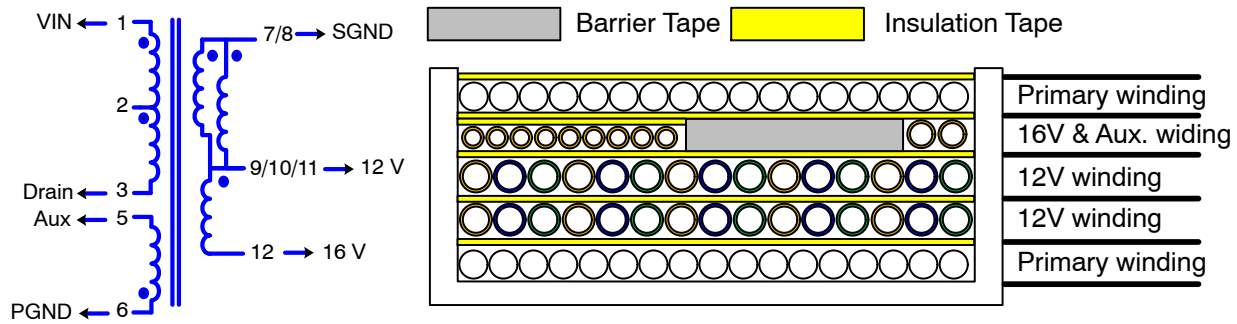


Figure 6. Transformer Specification

- Transformer Winding Method

Order	Winding Name	Wire - Diameter	Number of Strands	Start - Finish	Turns	Insulation Tape Turns
1	N _p	UEW - ϕ 0.45	1	1-2	24	1 ^{TS}
2	N _{12V}	TIW - ϕ 0.4	3	7-9	7	1 ^{IS}
3	N _{12V}	TIW - ϕ 0.4	3	8-10	7	1 ^{IS}
4	N _{16V}	TIW - ϕ 0.25	1	11-12	2	1 ^{IS}
5	N _{Aux}	TIW - ϕ 0.2	1	6-5	8	1 ^{IS}
6	N _p	UEW - ϕ 0.45	1	2-3	24	1 ^{IS}

NCP11187A65P45WGEVB

STANDBY POWER

1. STBY @ No Load

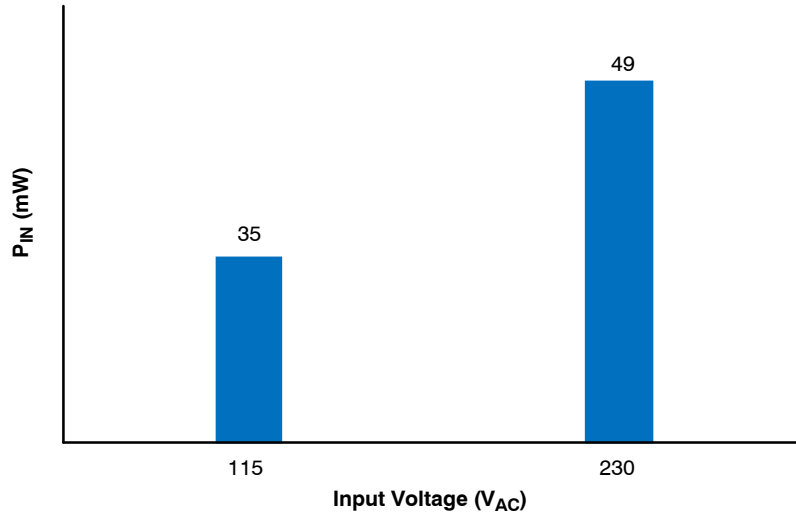


Figure 7. No Load Power Consumption

2. STBY @ Load Variation from 0.5 W to 10 W

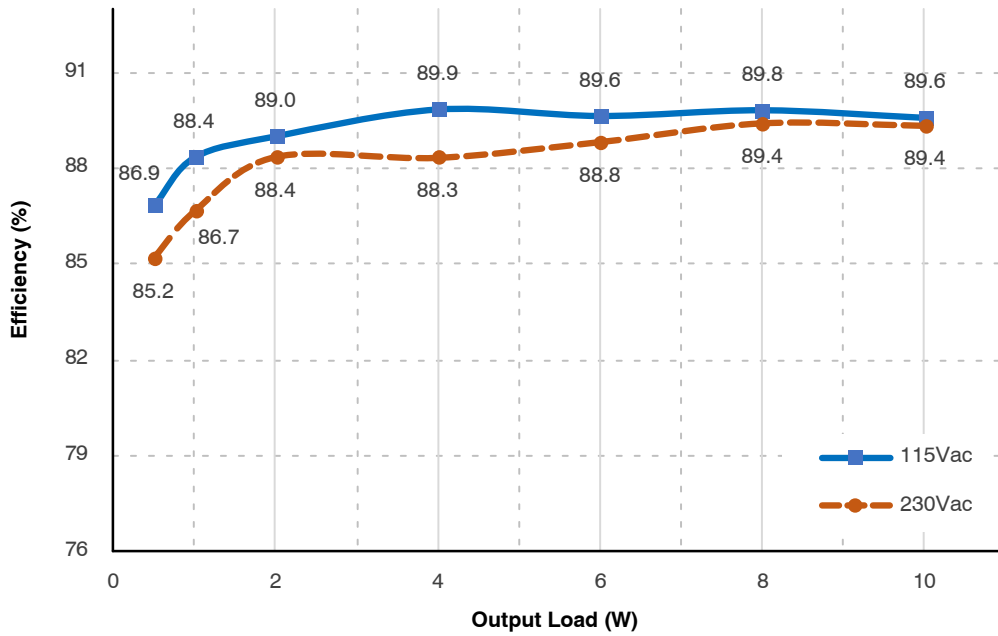


Figure 8. Stand-by Power at Light Load Condition

NCP11187A65P45WGEVB

EFFICIENCY

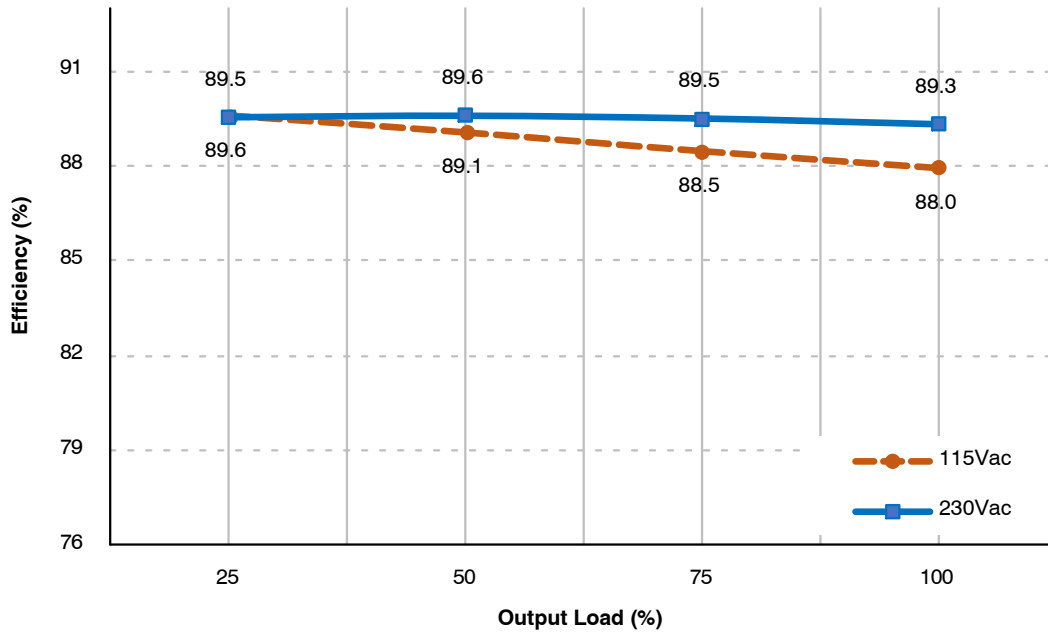


Figure 9. Efficiency at 4 Points Load

CONSTANT OVER-POWER LIMIT (COPL)

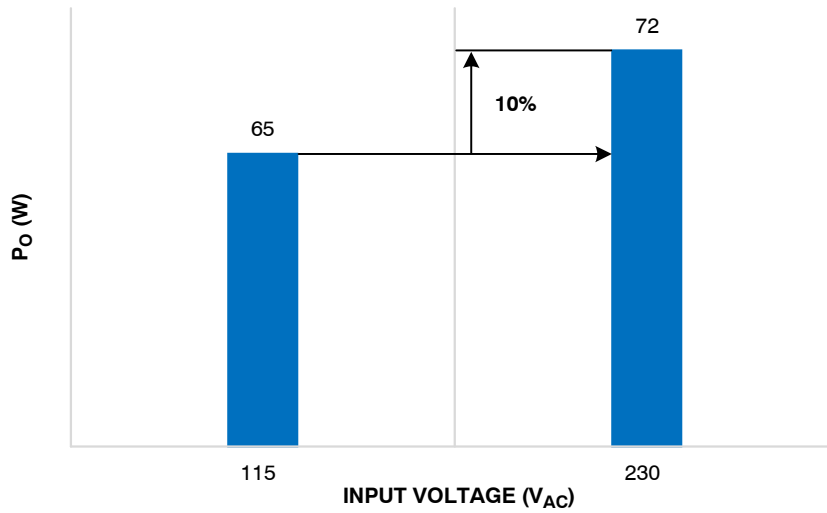


Figure 10. Over-Power-Limit Depending on Input Voltage

NCP11187A65P45WGEVB

TEMPERATURE OF COMPONENTS

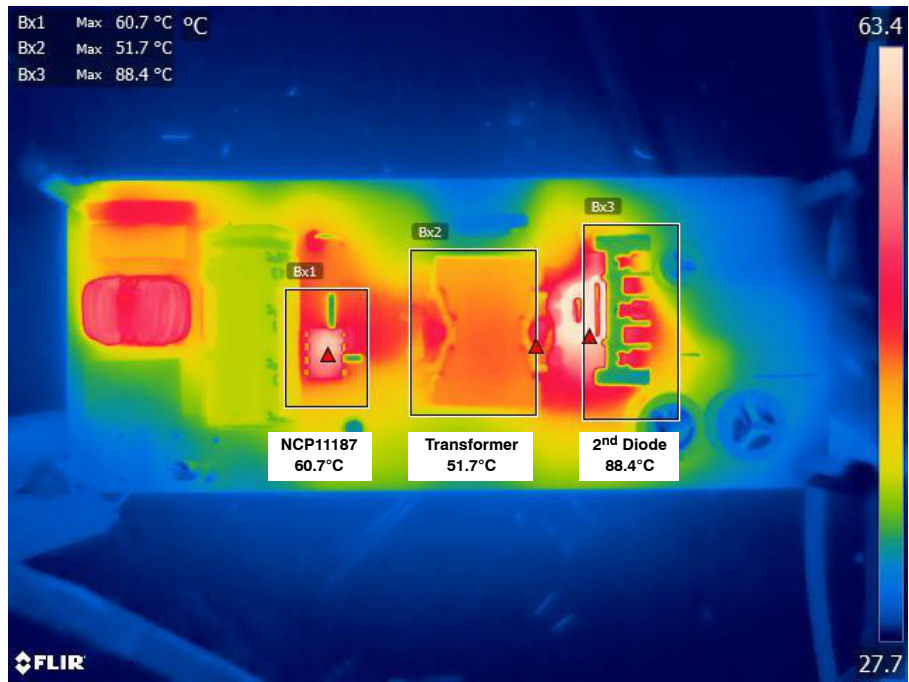


Figure 11. Temperature of the Reference Board @115 V_{AC}/60 Hz

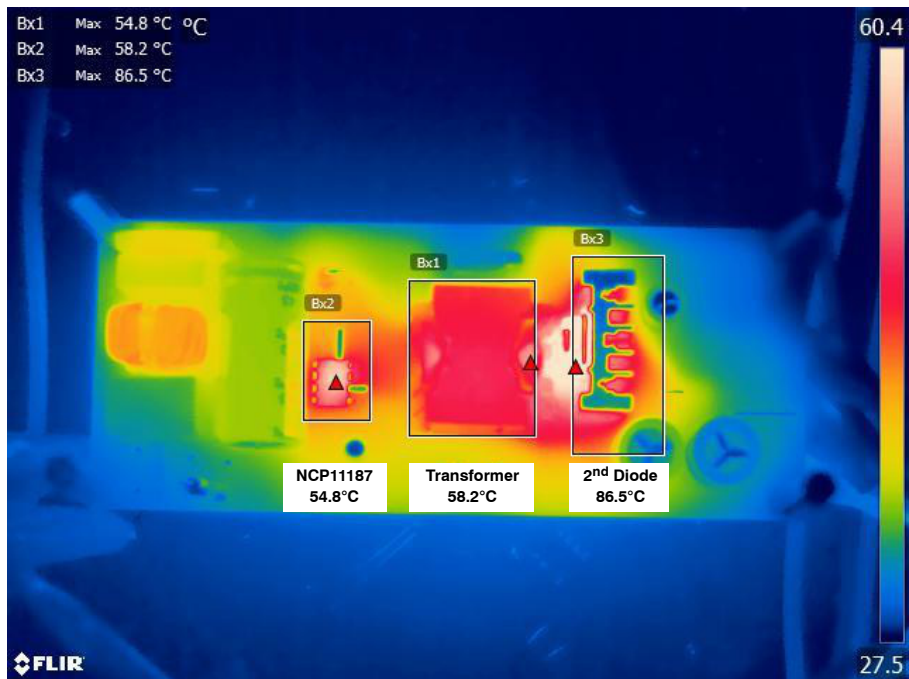


Figure 12. Temperature of the Reference Board @230 V_{AC}/60 Hz

NCP11187A65P45WGEVB

KEY OPERATIONS OF EVB

Nomenclature

Name	Description
V_{AC}	Line Input Voltage
V_D	Drain Voltage
I_D	Drain Current
V_{CC}	VCC Pin Voltage
V_{FB}	Feedback Voltage
V_{LINE}	Line Pin Voltage
V_{O-12V}	12 V Output Voltage
V_{O-15V}	15 V Output voltage
$t_{startup}$	Time from when the AC switch is turned on until the output voltage reaches 90%
f_s	Operation Frequency
V_{FB-BUR}	Burst-mode Start Threshold Voltage
$V_{FB-BURH}$	Burst-mode End Threshold Voltage
$t_D-VNOFF$	Brown-out Debounce Time
N_{VINOV}	VIN OVP Debounce Counting Number
t_D-OLP	FB OLP Debounce Time
N_{CSSP}	CSSP Debounce Counting Number

Operation Contents

1. Startup Operation
2. Normal Operation
3. Output Ripple Voltage
4. Burst Mode In/Out
5. Load Transient
 - a. Load Change: 20% → 80%
 - b. Load Change: 80% → 20%
6. Protection
 - a. Brown Out
 - b. Line Over Voltage Protection (LOVP)
 - c. Vcc Over Voltage Protection (OVP)
 - d. Over Load Protection (OLP)
 - e. Current Sense Short Protection (CSSP)
 - Startup at sensing resistor short
 - Short sensing resistor during normal operation
 - f. Thermal Shutdown Protection (TSD)

NCP11187A65P45WGEVB

1. Start-up Operation

CH1: V_{AC} , 400 V/div, CH2: V_{FB} , 5 V/div, CH3: I_D , 1 A/div, CH4: V_{O-12V} , 5 V/div

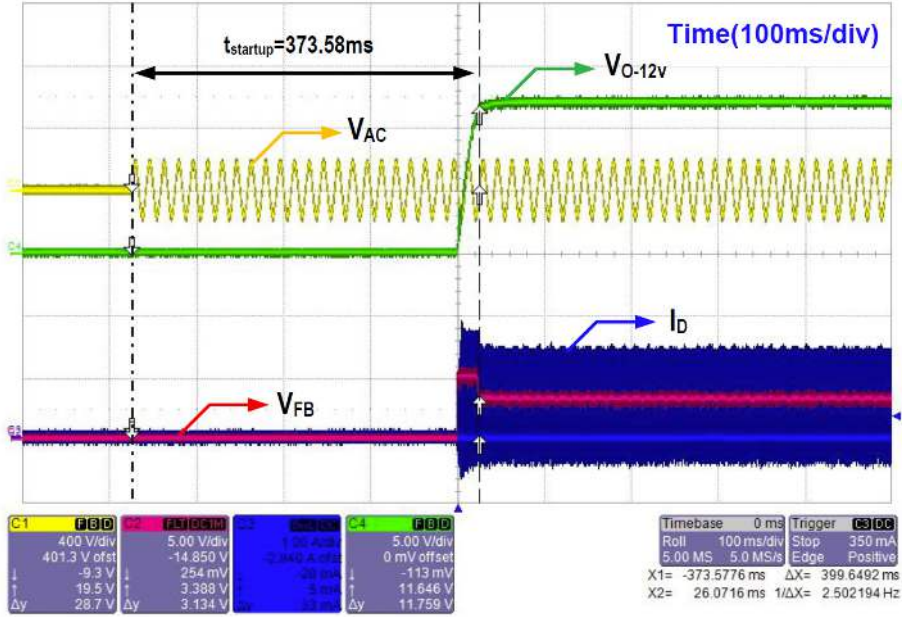


Figure 13. Start-up Operation @115 V_{AC} /60 Hz, Full Load

CH1: V_{AC} , 400 V/div, CH2: V_{FB} , 5 V/div, CH3: I_D , 1 A/div, CH4: V_{O-12V} , 5 V/div

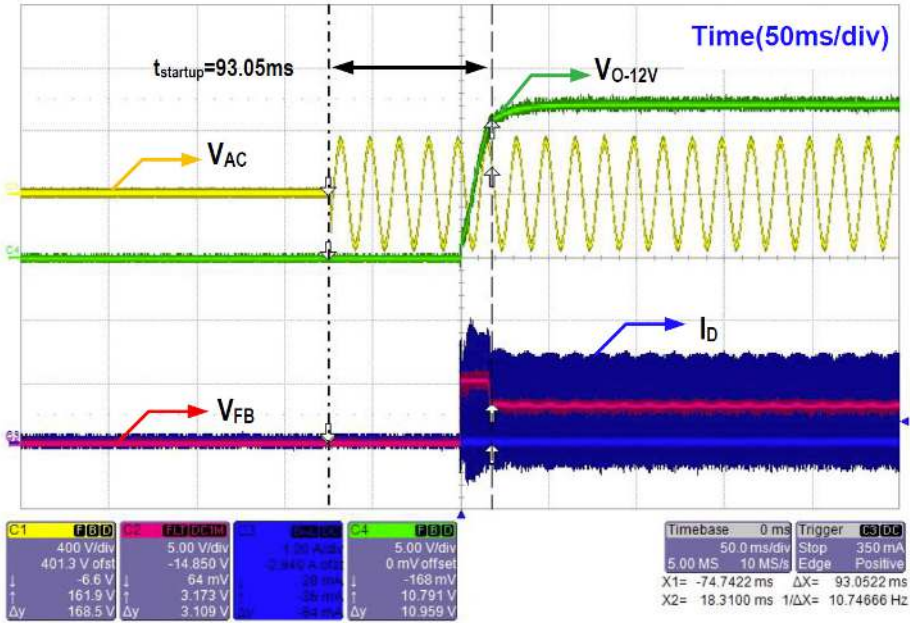


Figure 14. Start-up Operation @230 V_{AC} /60 Hz, Full Load

NCP11187A65P45WGEVB

2. Normal Operation

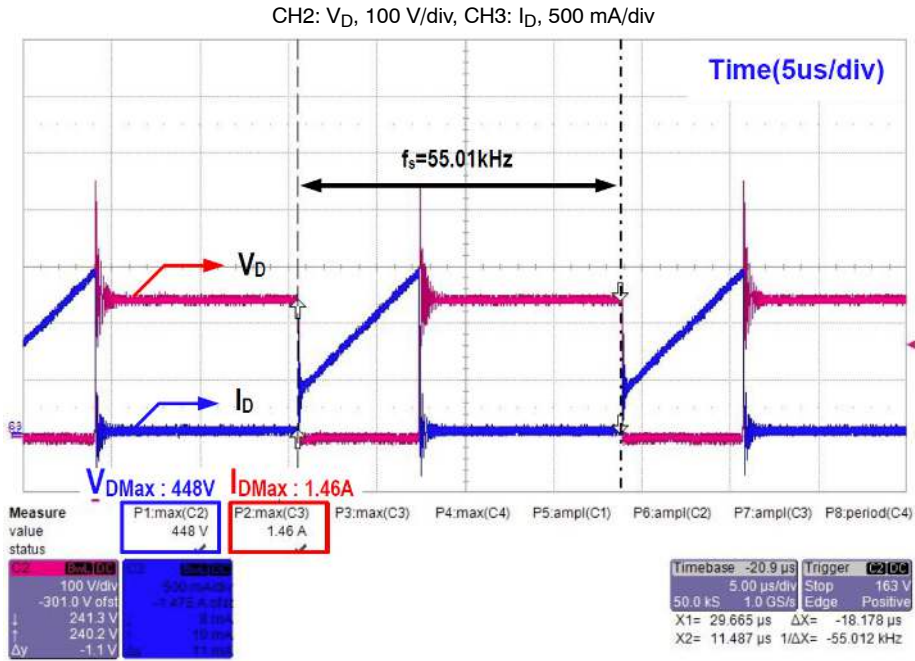


Figure 15. Normal Operation @ 115 V_{AC} /60 Hz, Full Load

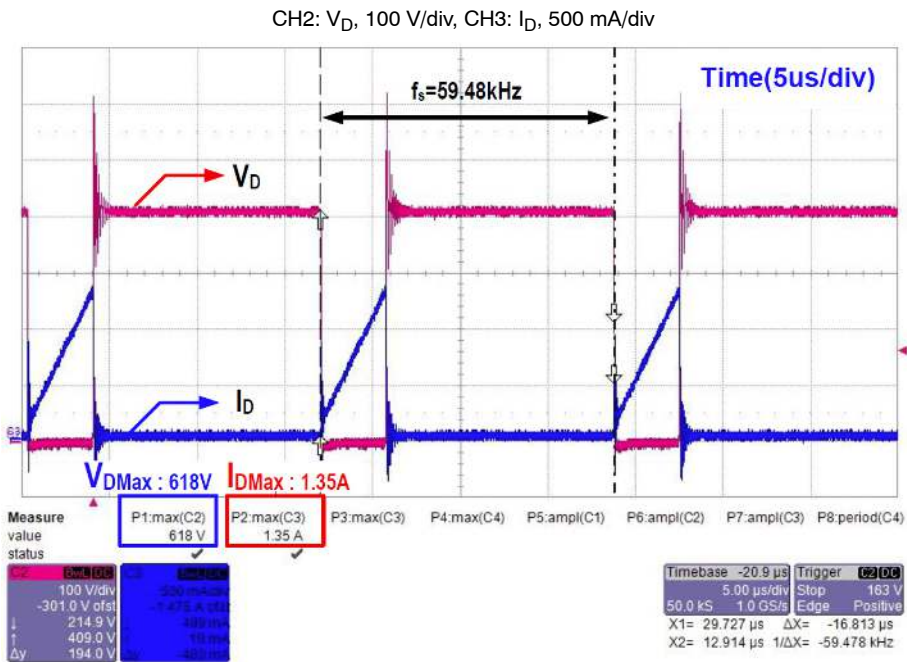


Figure 16. Normal Operation @ 230 V_{AC} /60 Hz, Full Load

NCP11187A65P45WGEVB

3. Output Ripple Voltage

- ◆ Test method

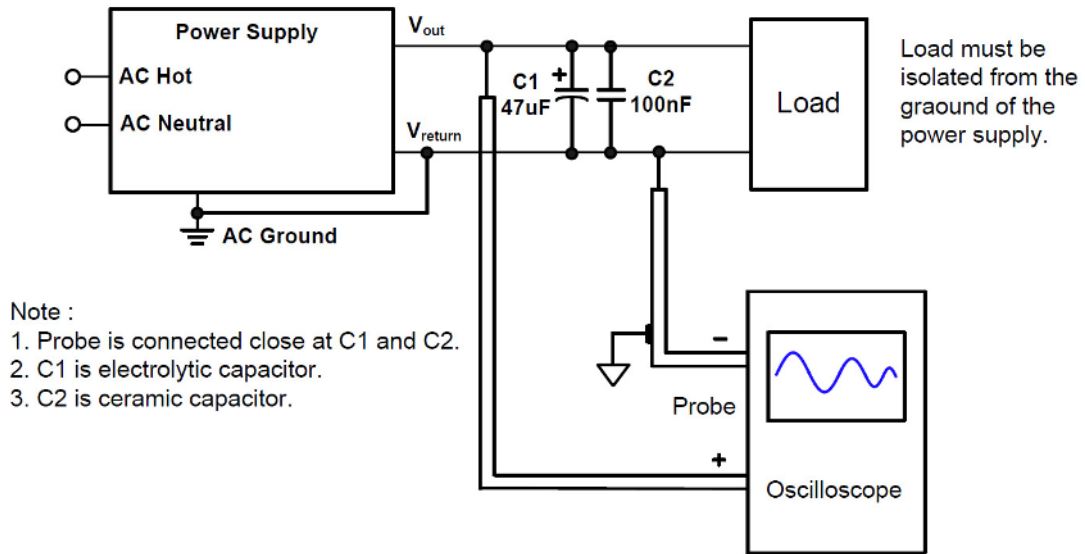


Figure 17. Test Method for Output Ripple and Noise

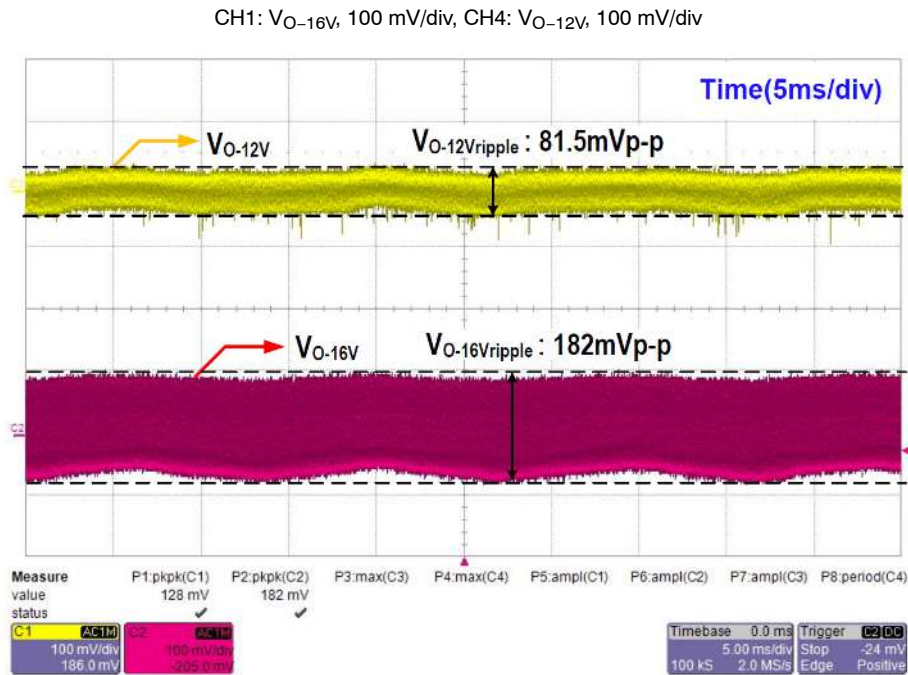


Figure 18. Output Ripple Voltage @115 V_{AC} /60 Hz, Full Load

NCP11187A65P45WGEVB

CH1: V_{O-16V} , 100 mV/div, CH4: V_{O-12V} , 100 mV/div

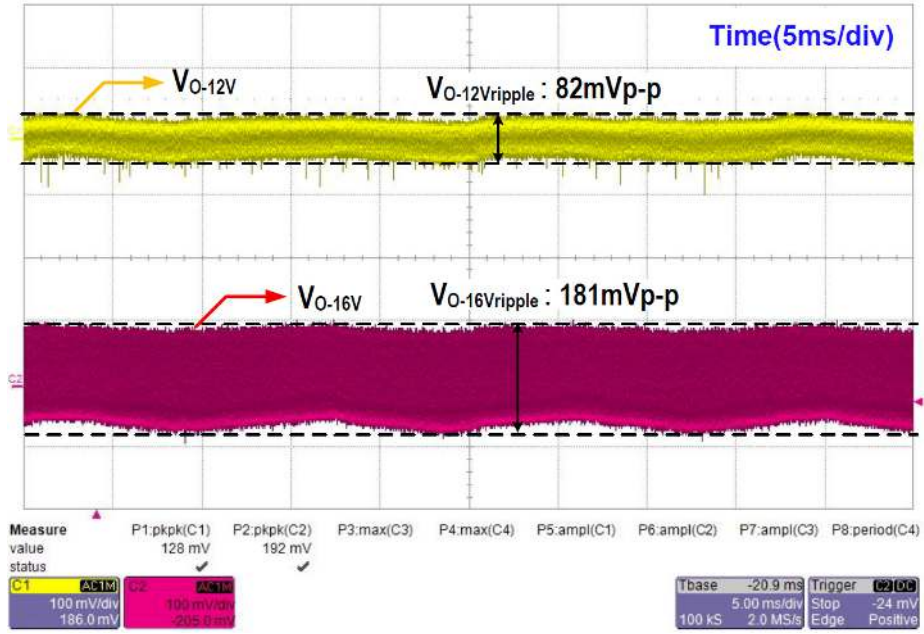


Figure 19. Output Ripple Voltage @230 V_{AC} /60 Hz, Full Load

NCP11187A65P45WGEVB

4. Burst Mode In/Out

CH2: V_{FB} , 500 mV/div, CH3: I_D , 500 mA/div

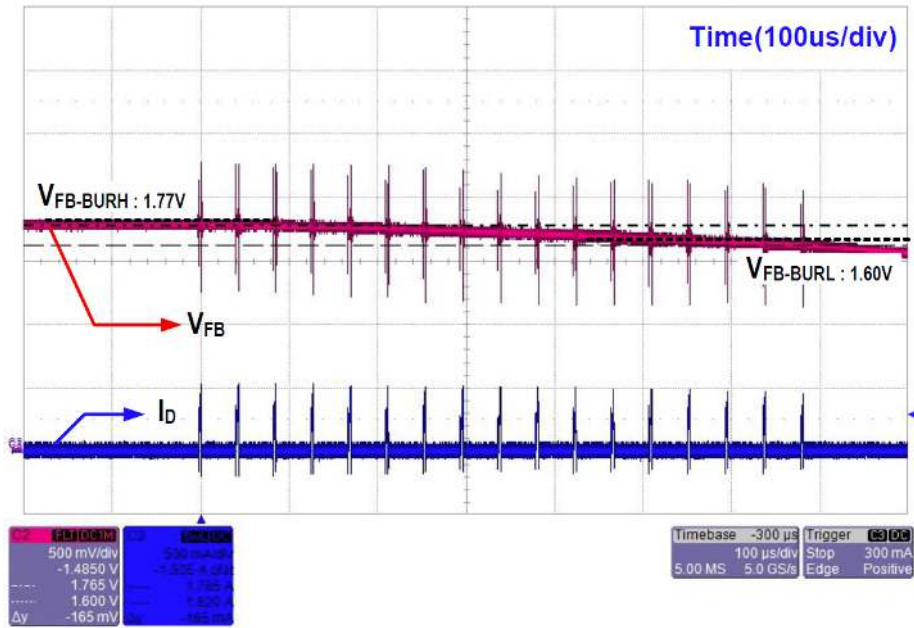


Figure 20. Burst Mode @115 V_{AC} /60 Hz, No Load

CH2: V_{FB} , 500 mV/div, CH3: I_D , 500 mA/div

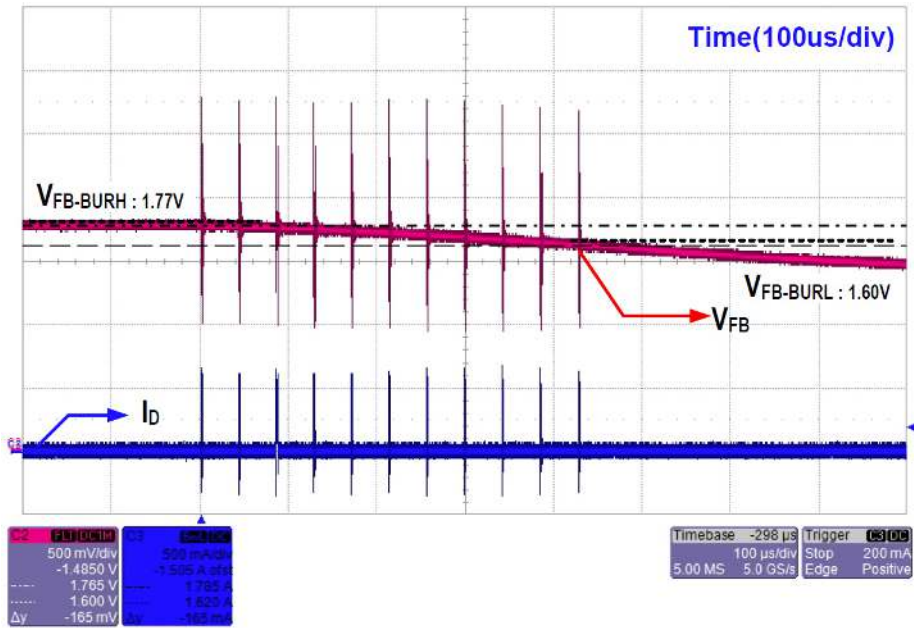


Figure 21. Burst Mode @230 V_{AC} /60 Hz, No Load

NCP11187A65P45WGEVB

5. Load Transient

a. Load Change: 20% → 80%

CH1: V_{O-16V} , 100 mV/div, CH2: V_{FB} , 5 V/div, CH3: I_D , 1 A/div, CH4: V_{O-12V} , 200 mV/div

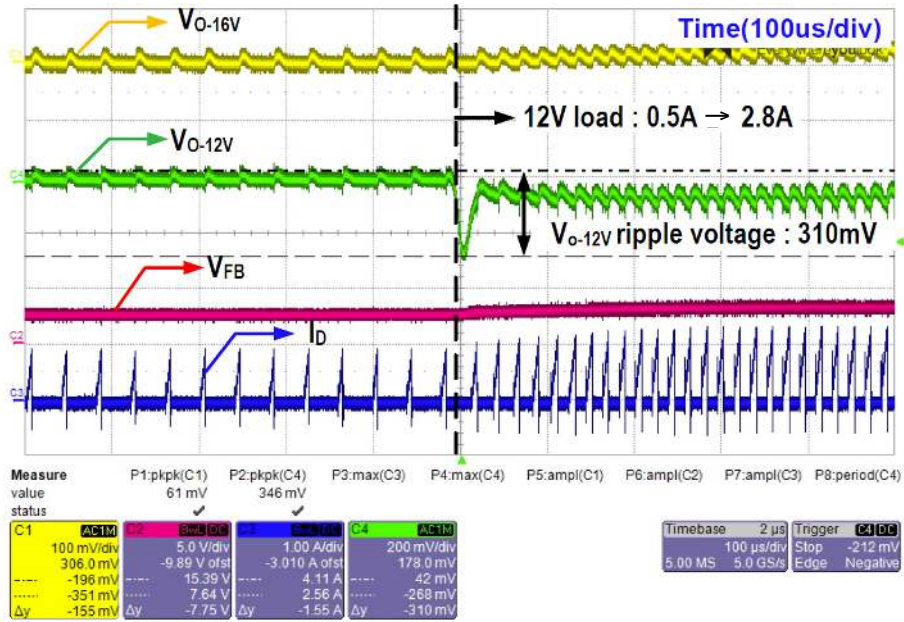


Figure 22. Load Transient @115 V_{AC} /60 Hz

CH1: V_{O-16V} , 100 mV/div, CH2: V_{FB} , 5 V/div, CH3: I_D , 1 A/div, CH4: V_{O-12V} , 200 mV/div

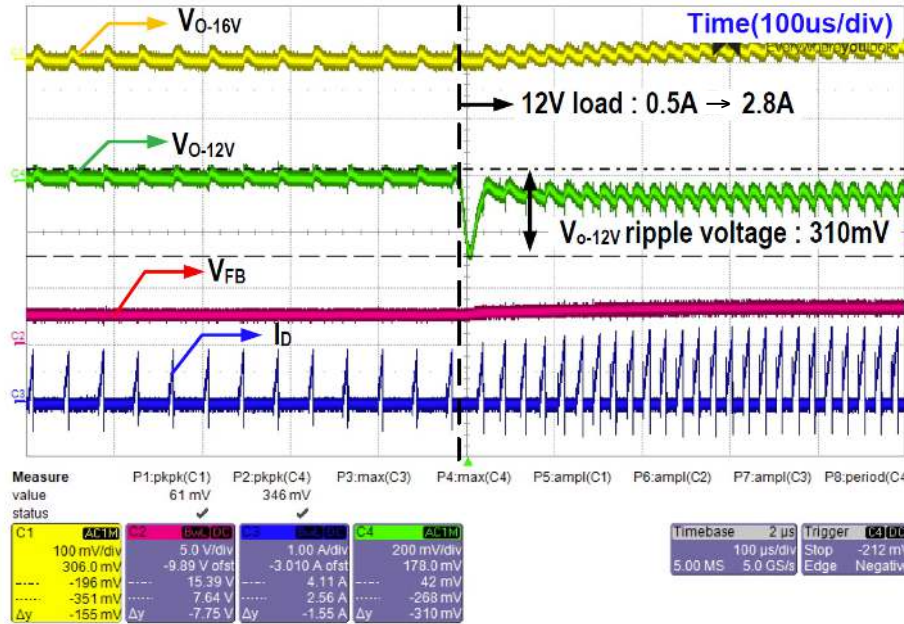


Figure 23. Load Transient @230 V_{AC} /60 Hz

NCP11187A65P45WGEVB

b. Load Change: 80% → 20%

CH1: V_{O-16V} , 100 mV/div, CH2: V_{FB} , 5 V/div, CH3: I_D , 1 A/div, CH4: V_{O-12V} , 200 mV/div

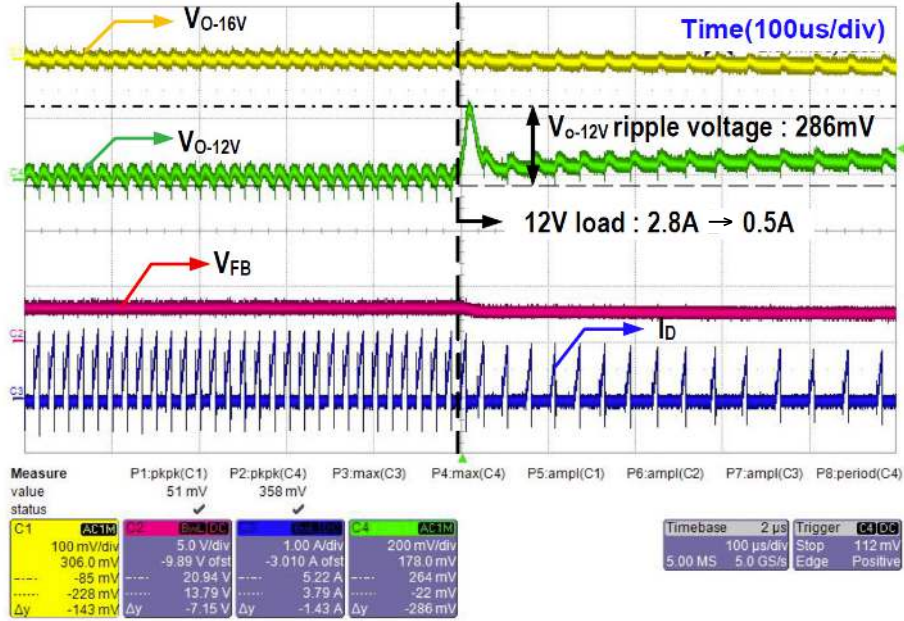


Figure 24. Load Transient @ 115 V_{AC} /60 Hz

CH1: V_{O-16V} , 100 mV/div, CH2: V_{FB} , 5 V/div, CH3: I_D , 1 A/div, CH4: V_{O-12V} , 200 mV/div

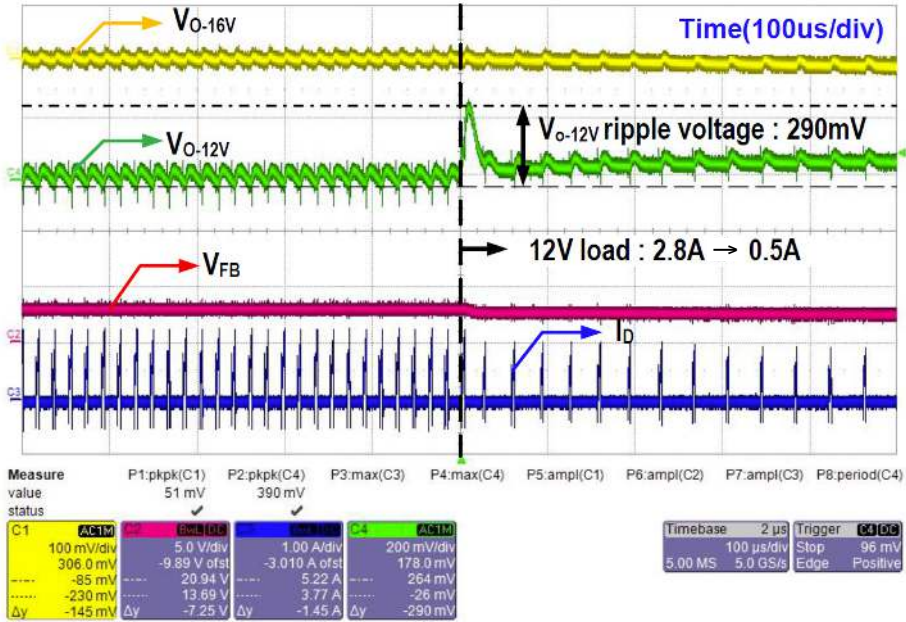


Figure 25. Load Transient @ 230 V_{AC} /60 Hz

NCP11187A65P45WGEVB

6. Protection a. Brown Out

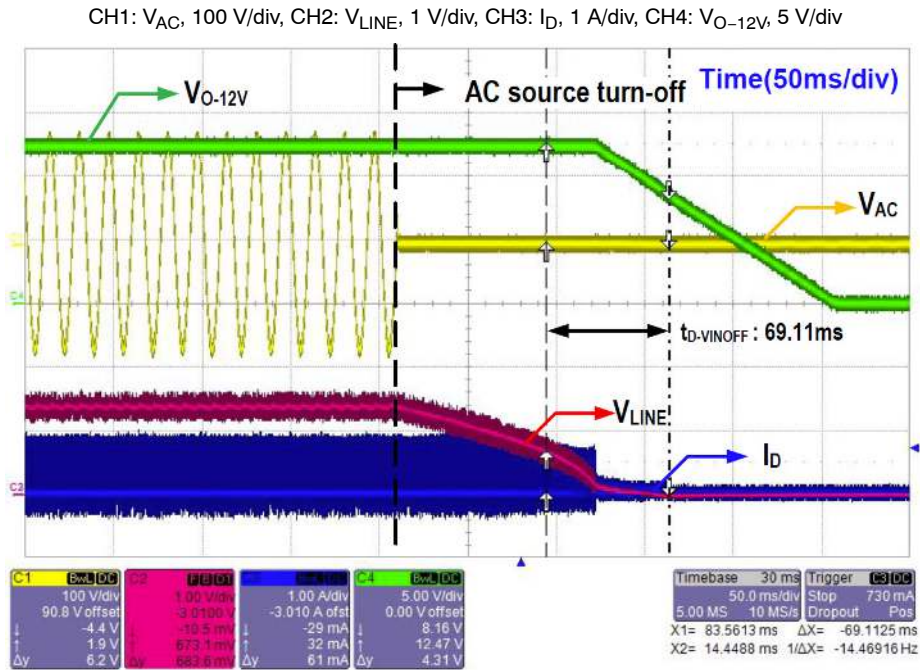


Figure 26. Brown Out @ Full Load

b. Line Over Voltage Protection (LOVP)

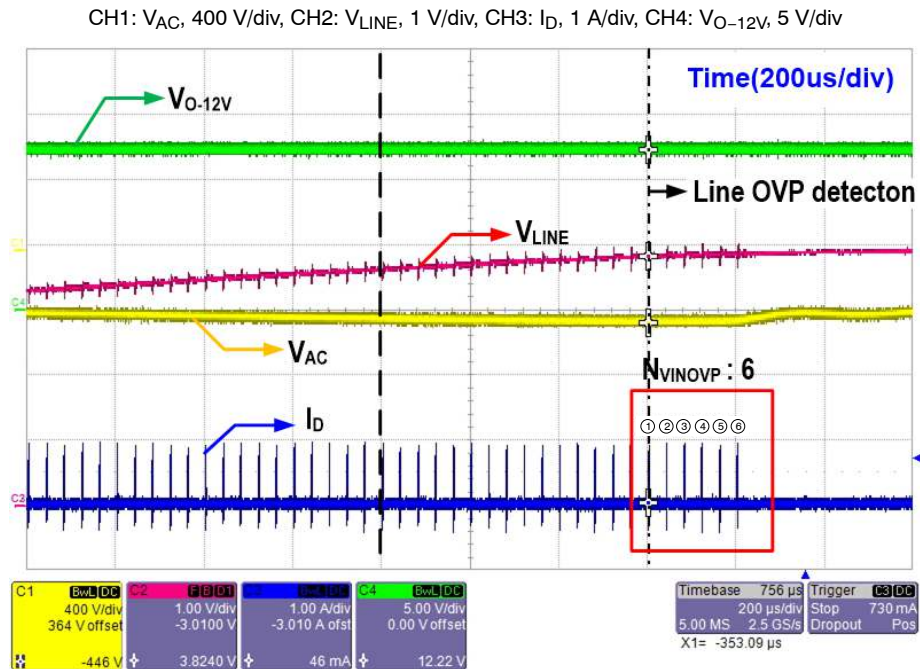


Figure 27. LOVP @ Full Load

NCP11187A65P45WGEVB

c. VCC Over Voltage Protection (OVP)

CH1: V_{CC} , 10 V/div, CH2: V_{FB} , 2 V/div, CH3: I_D , 1 A/div, CH4: V_{O-12V} , 5 V/div

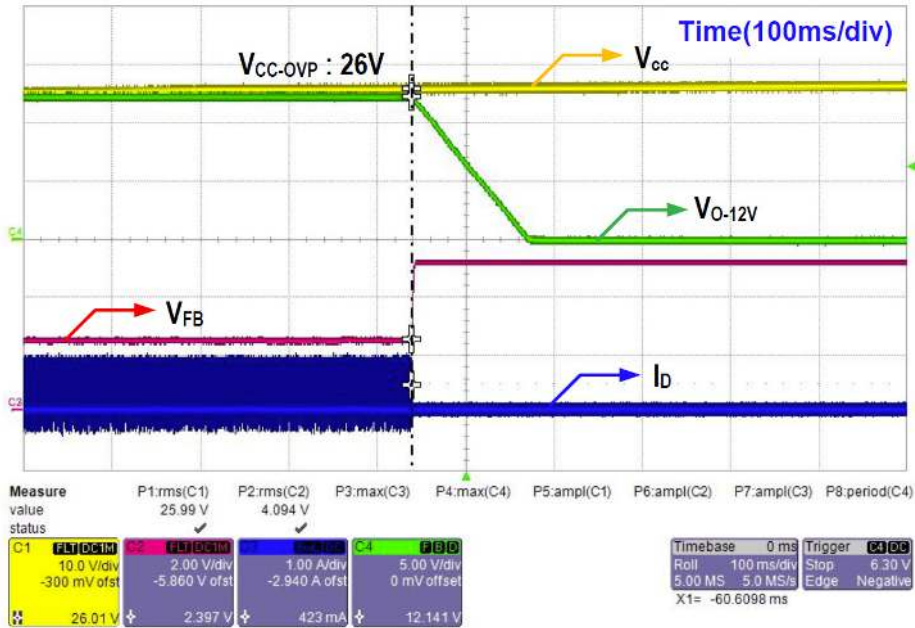


Figure 28. V_{CC} OVP @ 115 V_{AC} /60 Hz, Full Load

CH1: V_{CC} , 10 V/div, CH2: V_{FB} , 2 V/div, CH3: I_D , 1 A/div, CH4: V_{O-12V} , 5 V/div

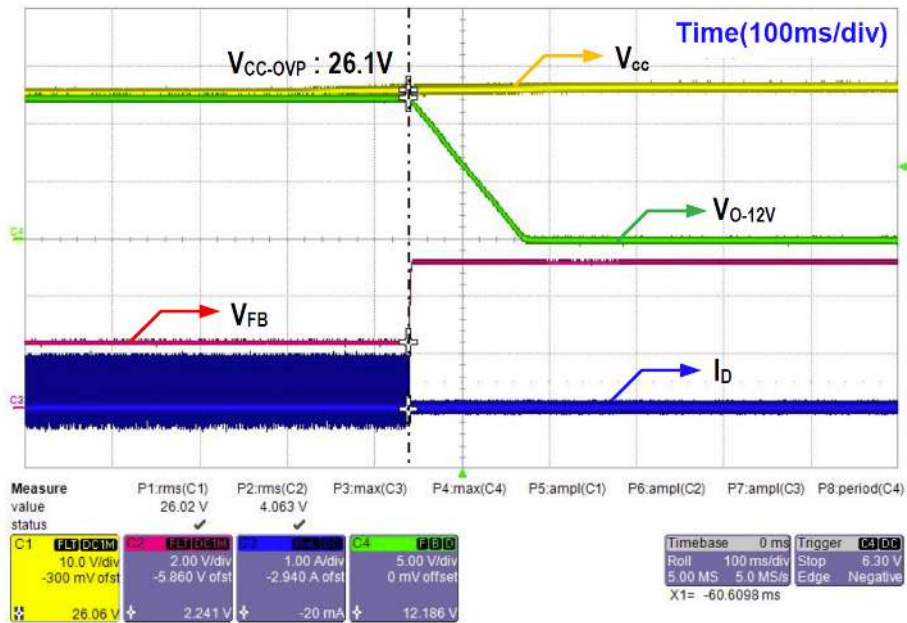


Figure 29. V_{CC} OVP @ 230 V_{AC} /60 Hz, Full Load

NCP11187A65P45WGEVB

d. Over Load Protection (OLP)

- Test method: Output short during operation
- ♦ t_{D-OLP} : FB OLP Debounce Time

CH1: V_{CC} , 10 V/div, CH2: V_{FB} , 2 V/div, CH3: I_D , 1 A/div, CH4: V_{O-12V} , 5 V/div

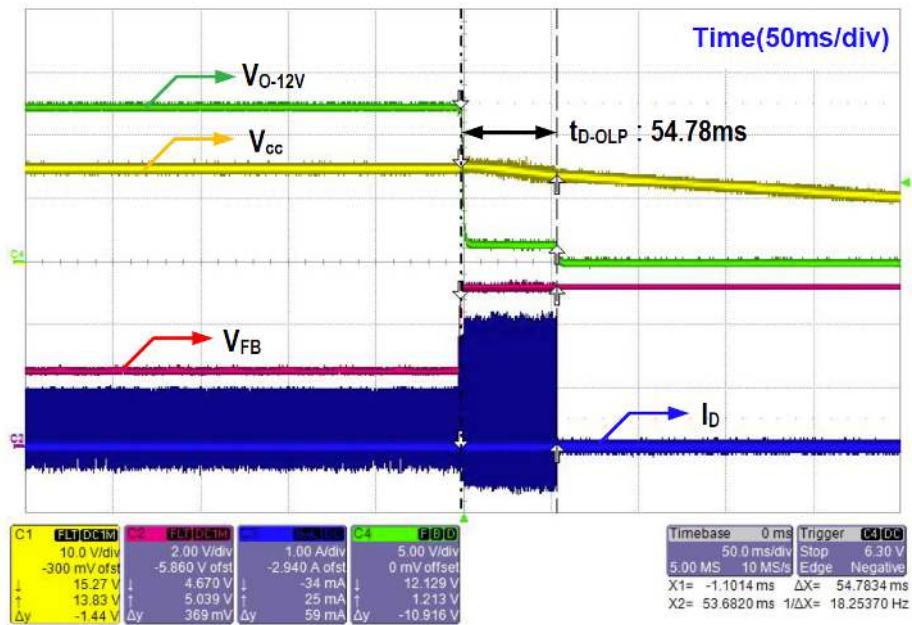


Figure 30. OLP @ 115 V_{AC} /60 Hz

CH1: V_{CC} , 10 V/div, CH2: V_{FB} , 2 V/div, CH3: I_D , 1 A/div, CH4: V_{O-12V} , 5 V/div

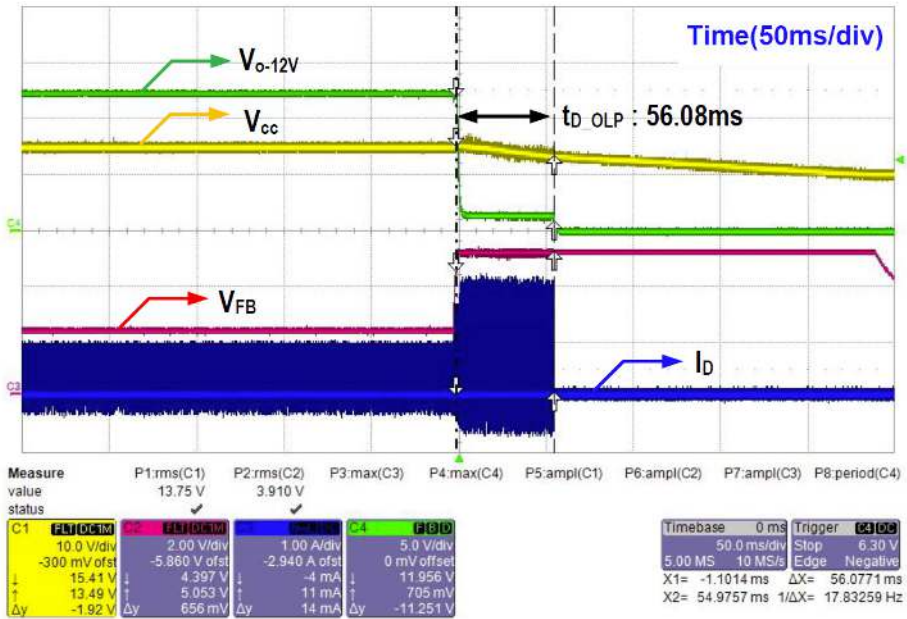


Figure 31. OLP @ 230 V_{AC} /60 Hz

NCP11187A65P45WGEVB

e. Current Sense Short Protection (CSSP)

- ◆ Startup at sensing resistor short

CH1: V_{CC} , 10 V/div, CH2: V_{FB} , 2 V/div, CH3: I_D , 1 A/div, CH4: V_{O-12V} , 5 V/div

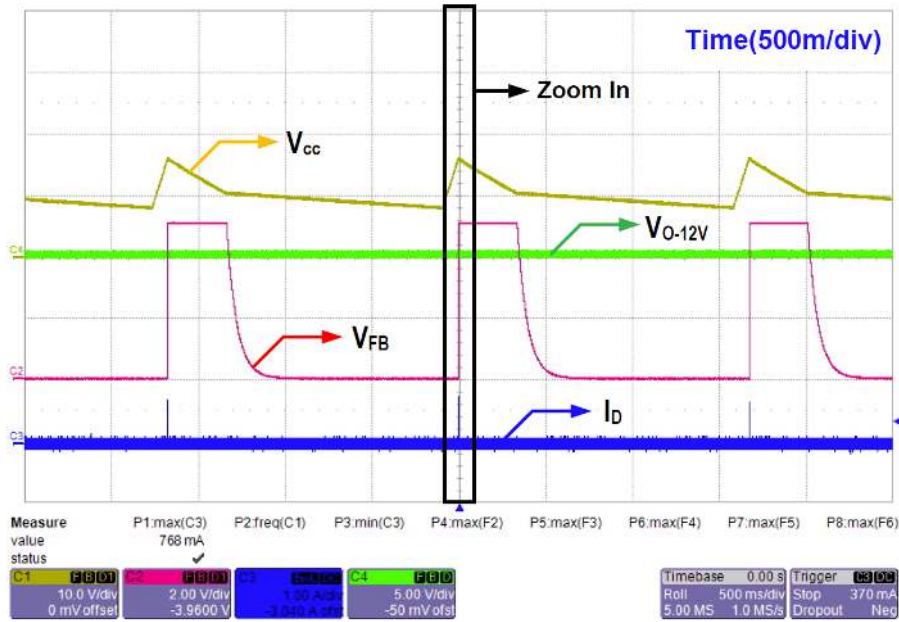


Figure 32. CSSP @ 115 V_{AC} /60 Hz, Full Load (Roll Mode)

CH1: V_{CC} , 10 V/div, CH2: V_{FB} , 2 V/div, CH3: I_D , 1 A/div, CH4: V_{O-12V} , 5 V/div

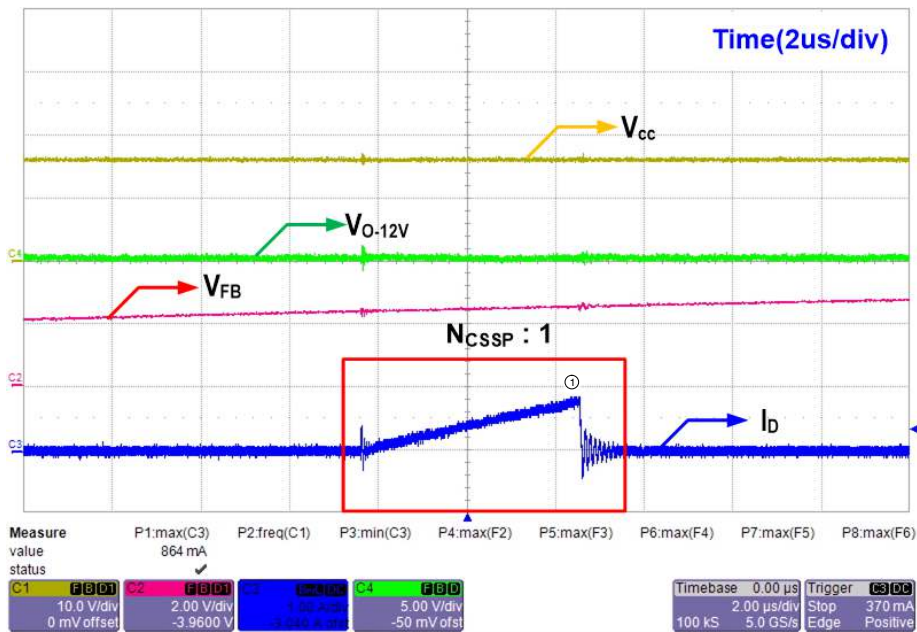


Figure 33. CSSP @ 115 V_{AC} /60 Hz, Full Load (Zoom In)

NCP11187A65P45WGEVB

CH1: V_{CC} , 10 V/div, CH2: V_{FB} , 2 V/div, CH3: I_D , 1 A/div, CH4: V_{O-12V} , 5 V/div

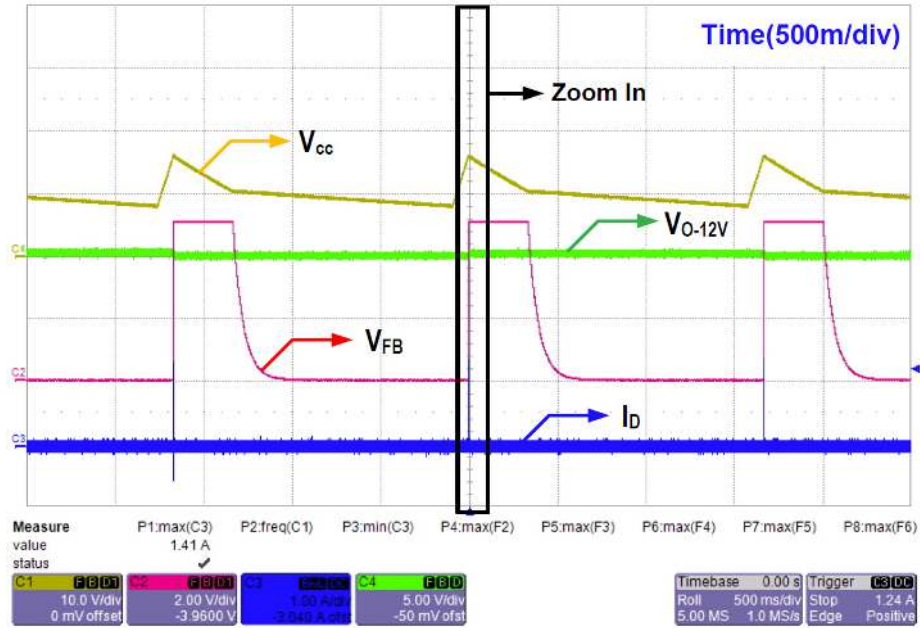


Figure 34. CSSP @ 230 V_{AC} /60 Hz, Full Load (Roll Mode)

CH1: V_{CC} , 10 V/div, CH2: V_{FB} , 2 V/div, CH3: I_D , 1 A/div, CH4: V_{O-12V} , 5 V/div

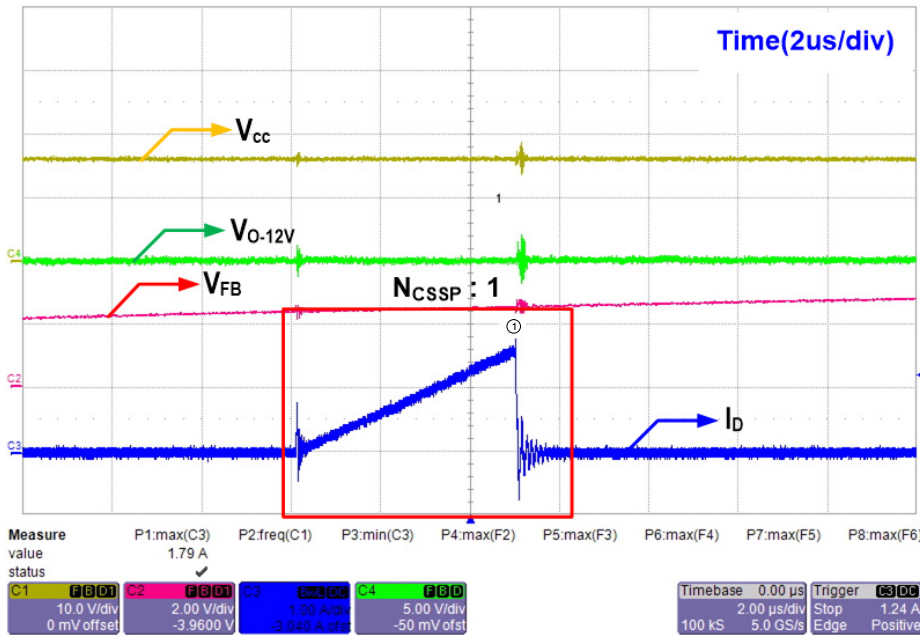


Figure 35. CSSP @ 230 V_{AC} /60 Hz, Full Load (Zoom In)

NCP11187A65P45WGEVB

- ◆ Short sensing resistor while operation

CH1: V_{CC} , 10 V/div, CH2: V_{FB} , 2 V/div, CH3: I_D , 1 A/div, CH4: V_{O-12V} , 5 V/div

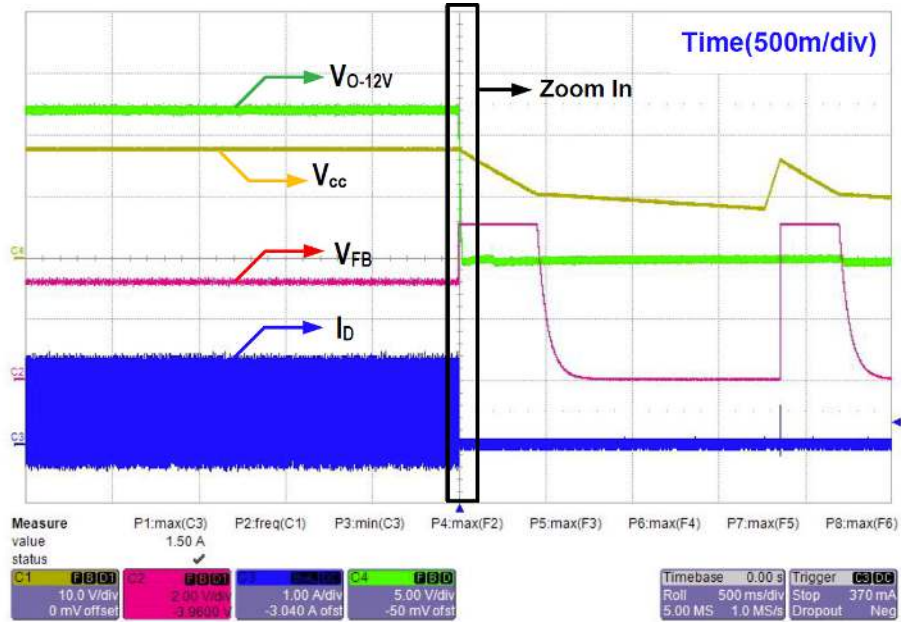


Figure 36. CSSP @ 115 V_{AC} /60 Hz, Full Load (Roll Mode)

CH1: V_{CC} , 10 V/div, CH2: V_{FB} , 2 V/div, CH3: I_D , 1 A/div, CH4: V_{O-12V} , 5 V/div

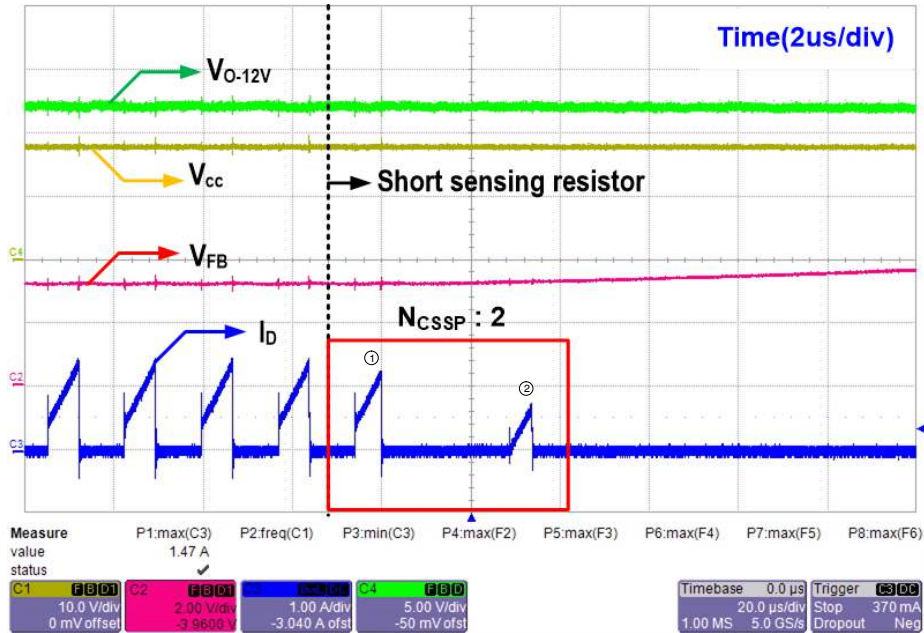


Figure 37. CSSP @ 115 V_{AC} /60 Hz, Full Load (Zoom In)

NCP11187A65P45WGEVB

CH1: V_{CC} , 10 V/div, CH2: V_{FB} , 2 V/div, CH3: I_D , 1 A/div, CH4: V_{O-12V} , 5 V/div

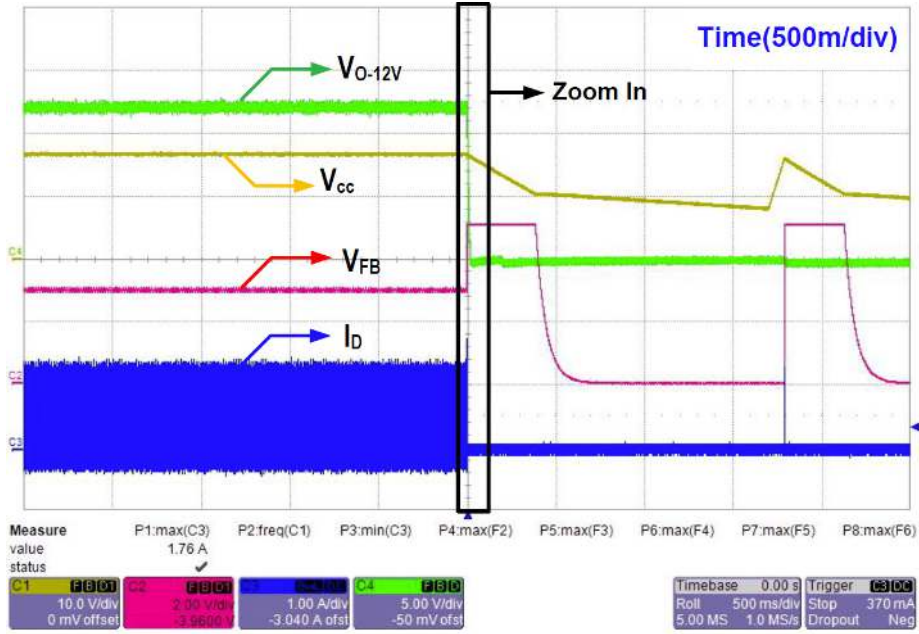


Figure 38. CSSP @ 230 V_{AC} /60 Hz, Full Load (Roll Mode)

CH1: V_{CC} , 10 V/div, CH2: V_{FB} , 2 V/div, CH3: I_D , 1 A/div, CH4: V_{O-12V} , 5 V/div

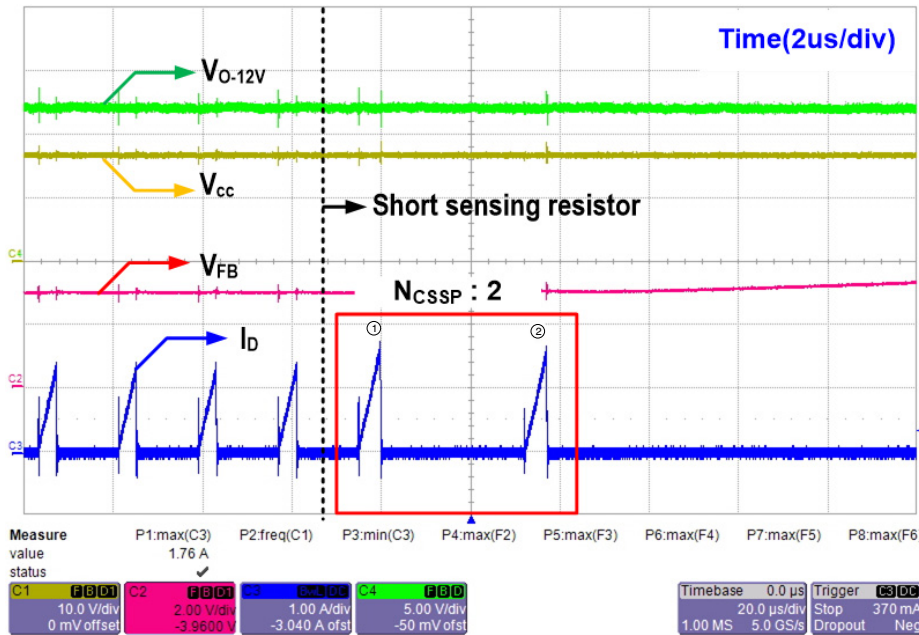


Figure 39. CSSP @ 230 V_{AC} /60 Hz, Full Load (Zoom In)

NCP11187A65P45WGEVB

7. Thermal Shutdown Protection (TSD)

CH1: V_{CC} , 10 V/div, CH2: V_{FB} , 2 V/div, CH3: I_D , 1 A/div, CH4: V_{O-12V} , 5 V/div

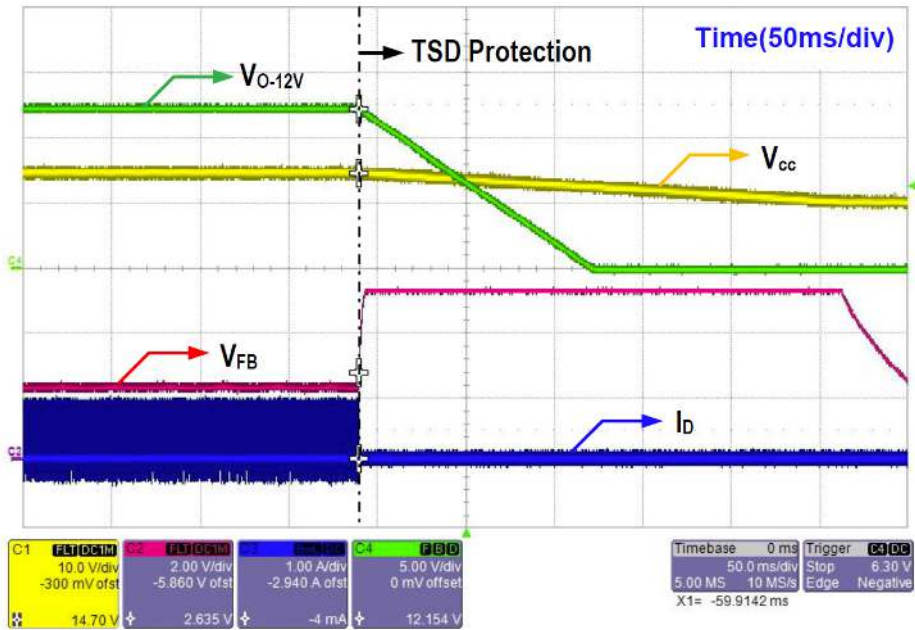


Figure 40. TSD @ 115 V_{AC} /60 Hz, Full Load

CH1: V_{CC} , 10 V/div, CH2: V_{FB} , 2 V/div, CH3: I_D , 1 A/div, CH4: V_{O-12V} , 5 V/div

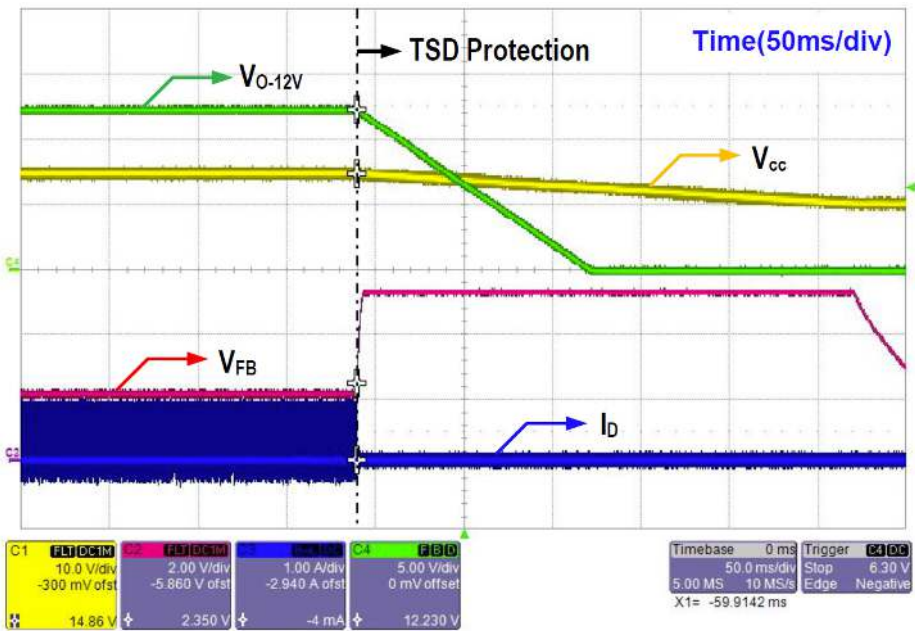


Figure 41. TSD @ 230 V_{AC} /60 Hz, Full Load

NCP11187A65P45WGEVB

BILL OF MATERIALS

Table 1. BILL OF MATERIALS

Parts	Qty	Description	Value	Tolerance	Footprint	Manufacturer	Part Number
C101	1	Electrolytic Capacitor	100 μ F/450 V		18 \times 31 mm	SAMYOUNG	NFA
C103	1	MLCC X7R capacitor	1 nF/10 V	\pm 5%	0805	Murata	
C104	1	MLCC X7R capacitor	100 nF/50 V	\pm 5%	0805	Murata	
C105, C204, C207	3	Electrolytic Capacitor	47 μ F/35 V		5 \times 11 mm	SAMYOUNG	NXH
C106	1	MLCC X7R capacitor	2 nF/10 V	\pm 5%	0603	Murata	
C201	1	MLCC X7R capacitor	100 pF/200 V	\pm 5%	1206	Yageo	
C202, C203	2	Electrolytic Capacitor	2200 μ F/16 V		12.5 \times 20 mm	SAMYOUNG	NXH
C205	1	MLCC X7R capacitor	470 pF/200 V	\pm 5%	1206	Yageo	
C206	1	Electrolytic Capacitor	680 μ F/25 V		10 \times 16 mm	SAMYOUNG	NXB
C208	1	MLCC X7R capacitor	27 nF/25 V	\pm 5%	0805	Murata	
CX101	1	X2 Capacitor	0.68 μ F/275 V	\pm 10%	11 \times 18.5 \times 18 mm	PILKOR	PCX2 337
CX102	1	X2 Capacitor	0.15 μ F/275 V	\pm 10%	6 \times 12 \times 80 mm	PILKOR	PCX2 337
CY101	1	Y1 Capacitor	4700 pF/250 V	\pm 20%	CY4.5X13	Murata	DE6E3KJ472MB3B
R101, R102, R112	3	Resistor SMD	10 M Ω	\pm 1%	1206	Rohm	
R103	1	Resistor SMD	270 k Ω	\pm 1%	0603	Rohm	
R106, R107, R108	3	Resistor SMD	2.7 Ω	\pm 1%	1206	Rohm	
R109, R110	2	Resistor SMD	2.2 Ω	\pm 1%	1206	Rohm	
R111	1	Resistor SMD	0 Ω	\pm 1%	0805	Rohm	
R201, R202	2	Resistor SMD	130 Ω	\pm 1%	1206	Rohm	
R203, R104	2	Resistor SMD	82 Ω	\pm 1%	1206	Rohm	
R205	1	Resistor SMD	750 Ω	\pm 1%	1206	Rohm	
R206	1	Resistor SMD	1.2 k Ω	\pm 1%	0805	Rohm	
R207	1	Resistor SMD	56 k Ω	\pm 1%	0805	Rohm	
R208	1	Resistor SMD	160 k Ω	\pm 1%	0805	Rohm	
R209	1	Resistor SMD	1.2 M Ω	\pm 1%	0805	Rohm	
R210	1	Resistor SMD	680 k Ω	\pm 1%	0805	Rohm	
R211	1	Resistor SMD	36 k Ω	\pm 1%	0805	Rohm	

NCP11187A65P45WGEVB

Table 1. BILL OF MATERIALS (continued)

Parts	Qty	Description	Value	Tolerance	Footprint	Manufacturer	Part Number
R212	1	Resistor SMD	1.8 k Ω	$\pm 1\%$	0805	Rohm	
D101, D102	2	Super Fast Rectifier	1000 V, 1 A		SMB	ON Semiconductor	MURS160T3G
D201	1	Schottky Rectifier	200 V, 20 A		TO-220	ON Semiconductor	MBR20200CT
D202	1	Schottky Rectifier	150 V, 10 A		TO-277	ON Semiconductor	FSV10150V
ZD101	1	TVS	220 V, 600 W		DO-15	ON Semiconductor	P6KE220A
BD101	1	Bridge Rectifier	600 V, 6 A		GBU 6J	ON Semiconductor	GBU6J
LF101	1	CM Choke	40 mH/1.3 A		21 \times 10 mm	TNC	CV613400SH
L201	1	Radial Lead Inductor	1.5 μ H/5.4 A	$\pm 20\%$	8.7 \times 10 mm, 5 mm pitch	BOURNS	RLB0912-1R5ML
L202	1	Radial Lead Inductor	1.5 μ H/0.92 A	$\pm 20\%$	5 \times 6.5 mm, 2 mm pitch	BOURNS	RLB0608-1R5ML
T201	1	Transformer	940 μ H	$\pm 10\%$	PQ2625, 12Pin	TDK	PQ2625
F101	1	Radial Lead Fuse	250 Vac, 2 A		SS-5	Little fuse	392 1200 0000
U101	1	PWM switcher	NCP11187		7DIP	ON Semiconductor	NCP11187A65F
U201	1	Opto coupler	CTR = 100%		DIP 4-pin	ON Semiconductor	FOD817A
U202	1	Shunt Regulator	Adjustable, 2.5 V	1%	SOT-23F 3L	ON Semiconductor	NCP431BCSNT1G
CN101	1	Connector	3Pin		pitch 3.96 mm	MOLEX	5273-03A
CN201	1	Connector	4Pin		pitch 3.96 mm	MOLEX	5273-04A
JP1	1	Jumper wire	Short		13.5 mm		
PCB	1	PCB					

All brand names and product names appearing in this document are registered trademarks or trademarks of their respective holders.

onsemi, **Onsemi**, and other names, marks, and brands are registered and/or common law trademarks of Semiconductor Components Industries, LLC dba "**onsemi**" or its affiliates and/or subsidiaries in the United States and/or other countries. **onsemi** owns the rights to a number of patents, trademarks, copyrights, trade secrets, and other intellectual property. A listing of **onsemi**'s product/patent coverage may be accessed at www.onsemi.com/site/pdf/Patent-Marking.pdf. **onsemi** is an Equal Opportunity/Affirmative Action Employer. This literature is subject to all applicable copyright laws and is not for resale in any manner.

The evaluation board/kit (research and development board/kit) (hereinafter the "board") is not a finished product and is not available for sale to consumers. The board is only intended for research, development, demonstration and evaluation purposes and will only be used in laboratory/development areas by persons with an engineering/technical training and familiar with the risks associated with handling electrical/mechanical components, systems and subsystems. This person assumes full responsibility/liability for proper and safe handling. Any other use, resale or redistribution for any other purpose is strictly prohibited.

THE BOARD IS PROVIDED BY ONSEMI TO YOU "AS IS" AND WITHOUT ANY REPRESENTATIONS OR WARRANTIES WHATSOEVER. WITHOUT LIMITING THE FOREGOING, ONSEMI (AND ITS LICENSORS/SUPPLIERS) HEREBY DISCLAIMS ANY AND ALL REPRESENTATIONS AND WARRANTIES IN RELATION TO THE BOARD, ANY MODIFICATIONS, OR THIS AGREEMENT, WHETHER EXPRESS, IMPLIED, STATUTORY OR OTHERWISE, INCLUDING WITHOUT LIMITATION ANY AND ALL REPRESENTATIONS AND WARRANTIES OF MERCHANTABILITY, FITNESS FOR A PARTICULAR PURPOSE, TITLE, NON-INFRINGEMENT, AND THOSE ARISING FROM A COURSE OF DEALING, TRADE USAGE, TRADE CUSTOM OR TRADE PRACTICE.

onsemi reserves the right to make changes without further notice to any board.

You are responsible for determining whether the board will be suitable for your intended use or application or will achieve your intended results. Prior to using or distributing any systems that have been evaluated, designed or tested using the board, you agree to test and validate your design to confirm the functionality for your application. Any technical, applications or design information or advice, quality characterization, reliability data or other services provided by **onsemi** shall not constitute any representation or warranty by **onsemi**, and no additional obligations or liabilities shall arise from **onsemi** having provided such information or services.

onsemi products including the boards are not designed, intended, or authorized for use in life support systems, or any FDA Class 3 medical devices or medical devices with a similar or equivalent classification in a foreign jurisdiction, or any devices intended for implantation in the human body. You agree to indemnify, defend and hold harmless **onsemi**, its directors, officers, employees, representatives, agents, subsidiaries, affiliates, distributors, and assigns, against any and all liabilities, losses, costs, damages, judgments, and expenses, arising out of any claim, demand, investigation, lawsuit, regulatory action or cause of action arising out of or associated with any unauthorized use, even if such claim alleges that **onsemi** was negligent regarding the design or manufacture of any products and/or the board.

This evaluation board/kit does not fall within the scope of the European Union directives regarding electromagnetic compatibility, restricted substances (RoHS), recycling (WEEE), FCC, CE or UL, and may not meet the technical requirements of these or other related directives.

FCC WARNING – This evaluation board/kit is intended for use for engineering development, demonstration, or evaluation purposes only and is not considered by **onsemi** to be a finished end product fit for general consumer use. It may generate, use, or radiate radio frequency energy and has not been tested for compliance with the limits of computing devices pursuant to part 15 of FCC rules, which are designed to provide reasonable protection against radio frequency interference. Operation of this equipment may cause interference with radio communications, in which case the user shall be responsible, at its expense, to take whatever measures may be required to correct this interference.

onsemi does not convey any license under its patent rights nor the rights of others.

LIMITATIONS OF LIABILITY: **onsemi** shall not be liable for any special, consequential, incidental, indirect or punitive damages, including, but not limited to the costs of requalification, delay, loss of profits or goodwill, arising out of or in connection with the board, even if **onsemi** is advised of the possibility of such damages. In no event shall **onsemi**'s aggregate liability from any obligation arising out of or in connection with the board, under any theory of liability, exceed the purchase price paid for the board, if any.

The board is provided to you subject to the license and other terms per **onsemi**'s standard terms and conditions of sale. For more information and documentation, please visit www.onsemi.com.

ADDITIONAL INFORMATION

TECHNICAL PUBLICATIONS:

Technical Library: www.onsemi.com/design/resources/technical-documentation
onsemi Website: www.onsemi.com

ONLINE SUPPORT: www.onsemi.com/support

For additional information, please contact your local Sales Representative at www.onsemi.com/support/sales